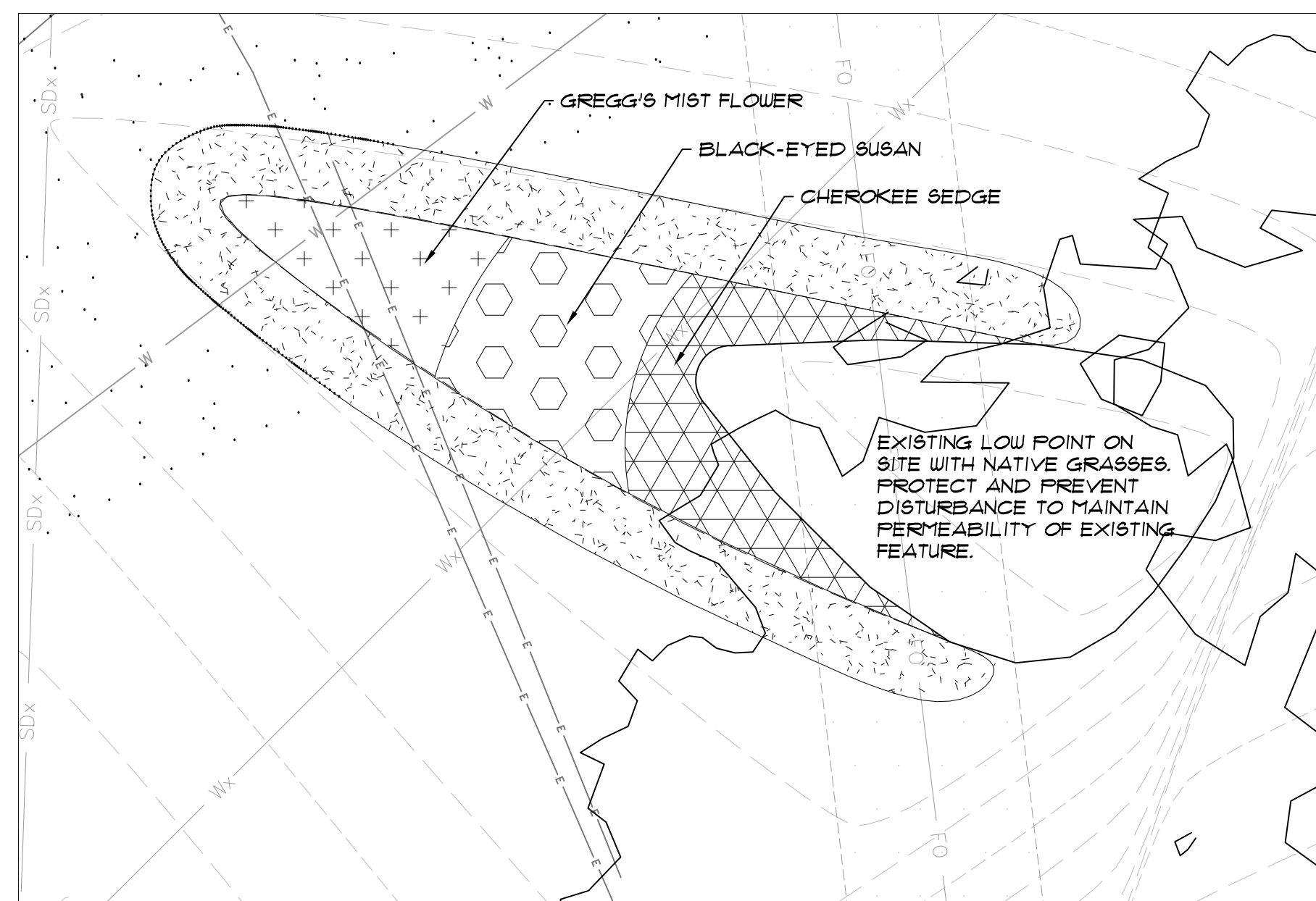
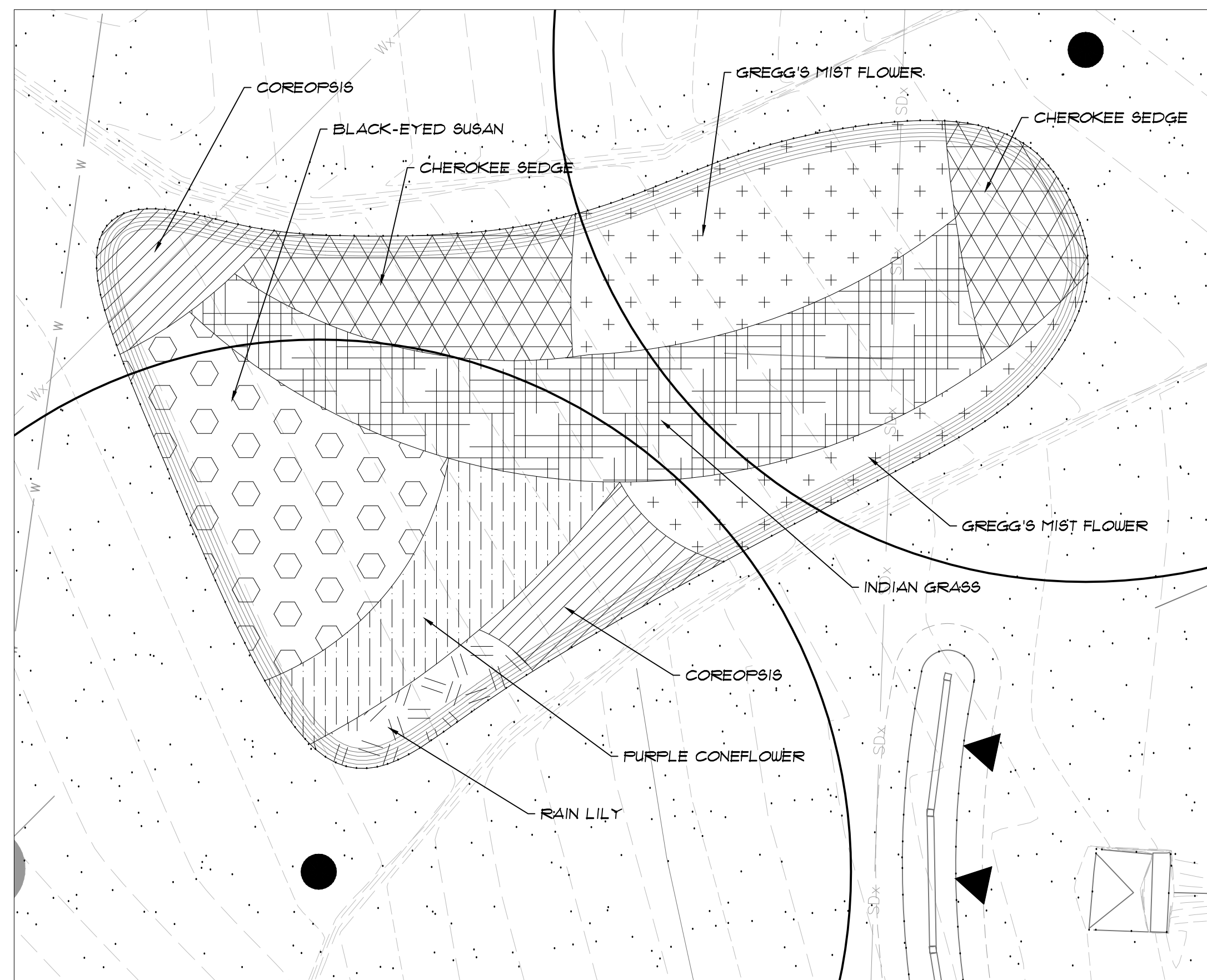


1 RAINGARDEN A
1/4" = 1'-0"



2 RAINGARDEN B
1/4" = 1'-0"



3 RAINGARDEN C
1/4" = 1'-0"

| PLANT NAME | SIZE/SPACING | REMARKS | UNIT | QTY. |
|----------------------------------------------------------------------------------|----------------------------------------------------|--------------------------------------------------------------------------------------------------------------------------------------------------------------------------------------------|------|------|
| TREES (Ref. "TREE REQUIREMENTS", this sheet) with Slaking: | | | | |
| CHINESE PISTACHE / PISTACIA CHINENSIS (MALE) | 3 1/4" x 3 1/2" CAL., MIN. 12' HT. X 1" SPR. CONT. | FULL MATCHED CANOPIES, SINGLE TRUNK TREE FORM, UPRIGHT GROWTH HABIT, WELL-BRANCHED, BRANCHING AT 1' HT. MIN. SPECIMEN GRADE | EA | 6 |
| BALD CYPRESS / TAXODIUM DISTICHUM | 3 1/4" x 3 1/2" CAL., MIN. 14' HT. X 1" SPR. CONT. | FULL, SINGLE TRUNK, TREE FORM, STRAIGHT CENTRAL LEADER, UPRIGHT GROWTH HABIT, WELL-BRANCHED, SPECIMEN GRADE | EA | 3 |
| TRIDENT MAPLE / ACER BUERGERIANUM | 3 1/4" x 3 1/2" CAL., MIN. 12' HT. X 1" SPR. CONT. | FULL, SINGLE TRUNK, TREE FORM, STRAIGHT LEADER, WELL-BRANCHED, BRANCHING 5' HT. MIN. SPECIMEN GRADE, WRAP TRUNK | EA | 3 |
| TAUPON HOLLY / ILEX VOMITORIA (MALE) | 3 1/4" x 3 1/2" CAL., MIN. 9' HT. X 5" SPR. CONT. | FULL MATCHED CANOPIES, MIN. 3 TRUNKS TREE FORM, UPRIGHT GROWTH HABIT, WELL-BRANCHED, SPECIMEN GRADE | EA | 3 |
| OKLAHOMA REDBUD / CERCIIS CANADENSIS 'OKLAHOMA' | 3 1/4" x 3 1/2" CAL., MIN. 9' HT. X 6" SPR. CONT. | FULL MATCHED CANOPIES, SINGLE TRUNK TREE FORM, STRAIGHT LEADER, UPRIGHT GROWTH HABIT, WELL-BRANCHED, SPECIMEN GRADE | EA | 3 |
| WATERMELON RED CRAPMYRTLE / LAGERSTROEMIA INDICA 'WATERMELON RED' | 3 1/4" x 3 1/2" CAL., MIN. 9' HT. X 5" SPR. CONT. | FULL MATCHED, MULTI-TRUNK (3 TRUNKS) TREE FORM, STRAIGHT LEADERS, WELL BRANCHED, BRANCHING AT 4' HT. MIN. SPECIMEN GRADE | EA | 2 |
| SHRUB | | | | |
| WHITE ENCHANTRESS DWARF INDIAN HAWTHORN / RAPHIOLEPIS INDICA 'WHITE ENCHANTRESS' | 5 GAL. CONT. | FULL FOLIAGE TO GROUND, WELL ROOTED, PLANTS SPACED PER PLANS TO FILL BED IN 2 ROWS | EA | 16 |
| BIORETENTION MIX: ORNAMENTAL GRASSES / PERENNIALS (FORBES) | | | | |
| INDIAN GRASS / SORGHASTRUM NUTANS | 4" POT, 28" ON CENTER | FULL FOLIAGE TO GROUND, WELL ROOTED, 0.21 PLANTS PER SF, TRI. SPACED | EA | |
| BLACK-EYED SUSAN / RUDBECKIA HIRTA | 1 GAL., 15" ON CENTER | FULL FOLIAGE TO GROUND, WELL ROOTED, 0.138 PLANTS PER SF, TRI. SPACED | EA | |
| CHEROKEE SEDGE / CAREX CHEROKEENSIS | 4" POT, 24" ON CENTER | FULL FOLIAGE TO GROUND, WELL ROOTED, 0.28 PLANTS PER SF, TRI. SPACED | EA | |
| GREGG'S MIST FLOWER / CONOCLINIUM (EUPATORIUM) GREGGII | 1 GAL., 24" ON CENTER | FULL FOLIAGE TO GROUND, WELL ROOTED, 0.28 PLANTS PER SF, TRI. SPACED | EA | |
| MOONBEAM COREOPSIS / COREOPSIS VERTICILLATA 'MOONBEAM' | 4" OR 5" POT, 12" ON CENTER | FULL FOLIAGE TO GROUND, WELL ROOTED, 1.5 PLANTS PER SF, TRI. SPACED | EA | |
| PURPLE CONEFLOWER / ECHINACEA PURPUREA | 1 GAL., 18" ON CENTER | FULL FOLIAGE TO GROUND, WELL ROOTED, 0.50 PLANTS PER SF, TRI. SPACED | EA | |
| HEATHWAVE GUMMERS SALVIA / SALVIA MICROPHYLLA X GREGGII 'EGGSENDS' | 1 GAL., 30" O.C. | FULL FOLIAGE, WELL ROOTED, 0.18 PLANTS PER SF, TRI. SPACED | EA | |
| EVERGREEN RAIN LILY / ZEPHYRANTHES CANDIDA (PINK BLOOM) | 4" OR 5" POT, 12" ON CENTER | FULL FOLIAGE, WELL ROOTED, 1.5 PLANTS PER SF, TRI. SPACED | EA | |
| VINES | | | | |
| A - 'GOLDFLAME' HONEYSUCKLE / LONICERA HECKROTTII 'GOLD FLAME' | 5 GAL. | 3 RUNNERS MINIMUM AT 4' LENGTH, TRAIN ONTO VINE SCREEN WITH CLEAR PLASTIC TWIST TIES - 2 TIES PER RUNNER | EA | 15 |
| B - SWEET AUTUMN CLEMATIS / CLEMATIS PANICULATA | 5 GAL. | 3 RUNNERS MINIMUM AT 4' LENGTH, TRAIN ONTO VINE SCREEN WITH CLEAR PLASTIC TWIST TIES - 2 TIES PER RUNNER | EA | 5 |
| C - MADISON ASIAN JASMINE / TRACHELOSPERMUM JASMINOIDES 'MADISON' | 5 GAL. | 3 RUNNERS MINIMUM AT 4' LENGTH, TRAIN ONTO VINE SCREEN WITH CLEAR PLASTIC TWIST TIES - 2 TIES PER RUNNER | EA | 3 |
| TURF GRASS | | | | |
| ST. AUGUSTINE 'RALEIGH' ORGANIC COPPOST | 800 DEPTH PER SPECIFICATIONS | REFERENCE SPECIFICATION SECTION 32 93 00 FOR RAIN GARDEN PLANTING MEDIA (BIORETENTION SOIL MEDIA) AND BED PREPARATION, REF. SPEC. SECT. 32 93 00 AND FOR REFERENCE SPECIFICATIONS 32 93 00 | SY | CY |
| PRAIRIE BUFFALOGRASS / BUCHLOE DACTYLOIDES 'PRAIRIE EXPANDED' SHALE | DEPTH PER SPECIFICATIONS | FOR RAIN GARDEN PLANTING MEDIA (BIORETENTION SOIL MEDIA) AND BED PREPARATION, REF. SPEC. SECTION 32 93 00 | SY | CY |
| MISCELLANEOUS | DEPTH PER SPECIFICATIONS | FOR RAIN GARDEN PLANTING MEDIA (BIORETENTION SOIL MEDIA) AND BED PREPARATION, REF. SPEC. SECTION 32 93 00 | SY | CY |
| BORDERED COBBLER SAND | DEPTH PER SPECIFICATIONS | FOR RAIN GARDEN PLANTING MEDIA (BIORETENTION SOIL MEDIA) AND BED PREPARATION, REF. SPEC. SECTION 32 93 00 | SY | CY |
| FINE CUT HARDWOOD MULCH | DEPTH PER SPECIFICATIONS | FOR PLANTING BED; REFERENCE SPECIFICATION SECTION 32 93 00 | SY | CY |
| RUSTIC CUT HARDWOOD MULCH | DEPTH PER SPECIFICATIONS | FOR RAIN GARDEN BEDS; REFERENCE SPECIFICATION SECTION 32 93 00 | SY | CY |
| SINGLE GRIND HARDWOOD MULCH | DEPTH PER SPECIFICATIONS | FOR MULCH BEDS; REFERENCE SPECIFICATION SECTION 32 93 00 | SY | CY |
| NEWSPRINT WEED BARRIER | 1 ITEM CONSISTING OF 8 LAYERS | REFERENCE SPECIFICATION SECTION 32 93 00 AND DETAILS | SF | |
| METAL LANDSCAPE EDGING - ALUMINUM | 3/16" x 3.5" | REFERENCE SPECIFICATION SECTION 32 93 00 AND DETAILS | LF | |
| NEW MEXICO RIVER ROCK | 3 1/2" DEPTH | REFERENCE SPEC. SECTION 32 93 00, DETAILS OVER DOUBLE LAYER FILTER FABRIC, AND PLAN FOR SIZES IN BED AREA | SY | CY |
| FILTER FABRIC | 2 LAYERS | FILTER FABRIC - EACH LAYER AT 90 DEG. TO EACH OTHER WITH 3" MINIMUM OVERLAP OF FABRIC - REF. TO SPEC. 32 93 00 | SY | |

TREE REQUIREMENTS
ROOT SYSTEM DEVELOPMENT:
 1. ALL NAMED CULTIVARS WILL BE OWN ROOT CLONES. NO GRAFTED OR BUD-GRAFTED TREES WILL BE ACCEPTED.
 2. 100% MECHANICALLY ROOT-PRUNED AT LEAST ONCE AND TRANSPLANTED A MINIMUM OF 3 TIMES DURING THE FIRST 3 YEARS OF THE TREE'S LIFE.
 3. THE TREES WILL HAVE BEEN GROWN IN HEAVY SOIL, NOT LOOSE SOIL, AND IRRIGATED WITH DRIP IRRIGATION.
 4. THE TRUNK FLARE MUST BE ABOVE GROUND AND VISIBLE AT NURSERY BEFORE SHIPPING AND AFTER TRANSPLANTING INTO THE LANDSCAPE.
 5. THE ROOT BALLS (IF USED) WILL HAVE BEEN HEELED IN FOR AT LEAST 30 DAYS AND HAVE A FLESH FLUSH OF NEW ROOT GROWTH AT THE EDGES OF THE CONTAINER.
CANOPY DEVELOPMENT:
 1. TREES WILL HAVE A STRONG CENTRAL LEADER TO THE TOP OF THE CANOPY. THE TIP OF THE LEADER ON THE MAIN TRUNK MUST BE INTACT AND ITS TERMINAL BUD MUST BE THE HIGHEST PART OF THE TREE.
 2. NO BRANCH CAN HAVE A DIAMETER GREATER THAN 2/3 THE TRUNK DIAMETER MEASURED DIRECTLY ABOVE THE BRANCH CROTCH. THE TREE WILL HAVE NO INCLUSIONS OR CO-DOMINANT BRANCHES.
 3. THE TREE CROWN MUST BE STRUCTURALLY UNIFORM. BRANCHES WILL BE EVENLY DISTRIBUTED AROUND THE TRUNK. THE CROWN WILL BE FULL OF FOLIAGE WHICH IS EVENLY DISTRIBUTED AROUND THE TREE.

REVISIONS
 DENOTED BY:

PROJECT #: 16032-00
 ISSUED FOR: 100% CD
 DATE: NOVEMBER 30, 2017

MANAGER: LSW
 DRAFTER: LSW
 CHECKED: ROC

Landscape
 Planting
 Schedule &
 Raingarden
 Enlargements

SHEET
L5-3
 OF 16 SHEETS
 Copyright © 2017 Hahnfeld Hoffer Stanford

Hahnfeld Hoffer Stanford
 architects/planners/interiors
 200 Bailey Ave., Suite 200
 Fort Worth, Texas 76107
 817.921.5928
 817.302.0692 fax

CANNONDESIGN
 1580 Wilson Boulevard, Suite 200
 Arlington, Virginia 22209
 T: 703.907.2300
 F: 703.907.2950

- CONSULTANTS
- JASTER-QUINTANILLA
 CIVIL ENGINEER
 100 GLASS ST.
 DALLAS, TEXAS 75207
 TEL: 972.752.9098
 - CAYE COOK & ASSOCIATES
 LANDSCAPE ARCHITECT
 12700 HILLCREST RD, SUITE 149
 DALLAS, TX 75230
 TEL: 214.739.9105
 - PONCE-FUESS ENGINEERING, LLC
 STRUCTURAL ENGINEER
 3333 LEE PARKWAY, SUITE 475
 DALLAS, TEXAS 75219
 TEL: 469.310.2850
 - PURDY-McGUIRE, INC.
 MEP ENGINEER
 17300 DALLAS PARKWAY, SUITE 3000
 DALLAS, TEXAS 75248
 TEL: 972.239.5357
 - RICCA DESIGN STUDIOS
 FOOD SERVICE CONSULTANT
 5325 S VALENTIA WAY
 GREENWOOD VILLAGE, COLORADO 80111
 TEL: 303.221.0500
 - LAFLEUR ASSOCIATES LLC
 LIGHTING CONSULTANT
 307 HIGH STREET, SUITE D
 CHESTERTOWN, MARYLAND 21620
 TEL: 443.929.2310
 - WJHW, INC.
 AUDIOVISUAL CONSULTANTS
 3424 MIDCOURT ROAD, SUITE 124
 CARROLLTON, TEXAS 75006
 TEL: 972.934.3700
 - WISS, JANNEY, ELSTNER ASSOCIATES, INC.
 BUILDING ENVELOPE CONSULTANT
 6363 N. STATE HIGHWAY 161, SUITE 550
 IRVING, TEXAS 75038
 TEL: 972.550.7777



TEXAS WOMAN'S UNIVERSITY
HUBBARD HALL
ADDITION AND RENOVATION
- STUDENT UNION
DENTON, TEXAS

A592/TWU Hubbard Hall_2017/TWUHH_FIT_ARCH NEW CENTRAL.rvt
 6/15/17 5:46:58 PM