

CONSULTANTS

JASTER-QUINTANILLA
CIVIL ENGINEER
100 GLASS ST.
DALLAS, TEXAS 75207
TEL 972.752.9098

CAYE COOK & ASSOCIATES
LANDSCAPE ARCHITECT
12700 HILLCREST RD, SUITE 149
DALLAS, TX 75230
TEL 214.739.9105

PONCE-FUOSS ENGINEERING, LLC
STRUCTURAL ENGINEER
3333 LEE PARKWAY, SUITE 475
DALLAS, TEXAS 75219
TEL 469.310.2850

PURDY-McGUIRE, INC.
MEP ENGINEER
17300 DALLAS PARKWAY, SUITE 3000
DALLAS, TEXAS 75248
TEL 972.239.5357

RICCA DESIGN STUDIOS
FOOD SERVICE CONSULTANT
5325 S VALENTIA WAY
GREENWOOD VILLAGE, COLORADO 80111
TEL 303.221.0500

LAFLEUR ASSOCIATES LLC
LIGHTING CONSULTANT
307 HIGH STREET, SUITE D
CHESTERTOWN, MARYLAND 21620
TEL 443.929.2310

WJHW, INC.
AUDIO/VISUAL CONSULTANTS
3424 MIDCOURT ROAD, SUITE 124
CARROLLTON, TEXAS 75006
TEL 972.934.3700

WISS, JANNEY, ELSTNER ASSOCIATES, INC.
BUILDING ENVELOPE CONSULTANT
6363 N. STATE HIGHWAY 161, SUITE 550
IRVING, TEXAS 75038
TEL 972.550.7777



**TEXAS WOMAN'S UNIVERSITY
HUBBARD HALL
ADDITION AND RENOVATION
- STUDENT UNION
DENTON, TEXAS**

PROJECT #: 16032-00 MANAGER: Designer
ISSUED FOR: 100% CD DRAFTER: Author
DATE: NOVEMBER 30, 2017 CHECKED: Checker

ABBREVIATIONS, KEY TO MATERIALS

SHEET

GO-1

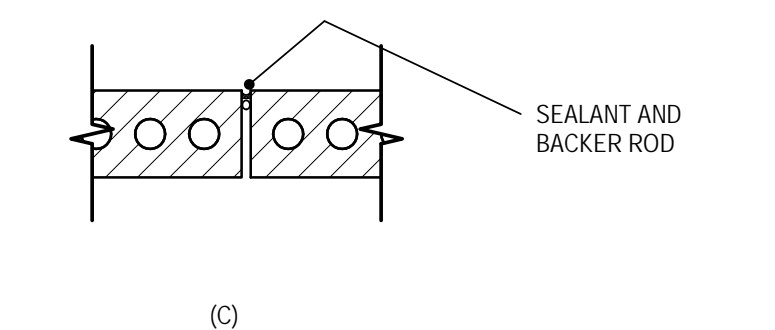
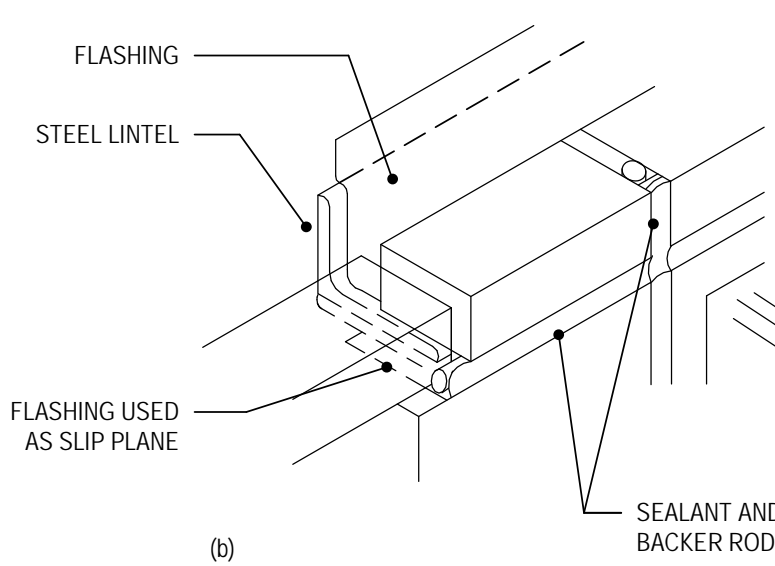
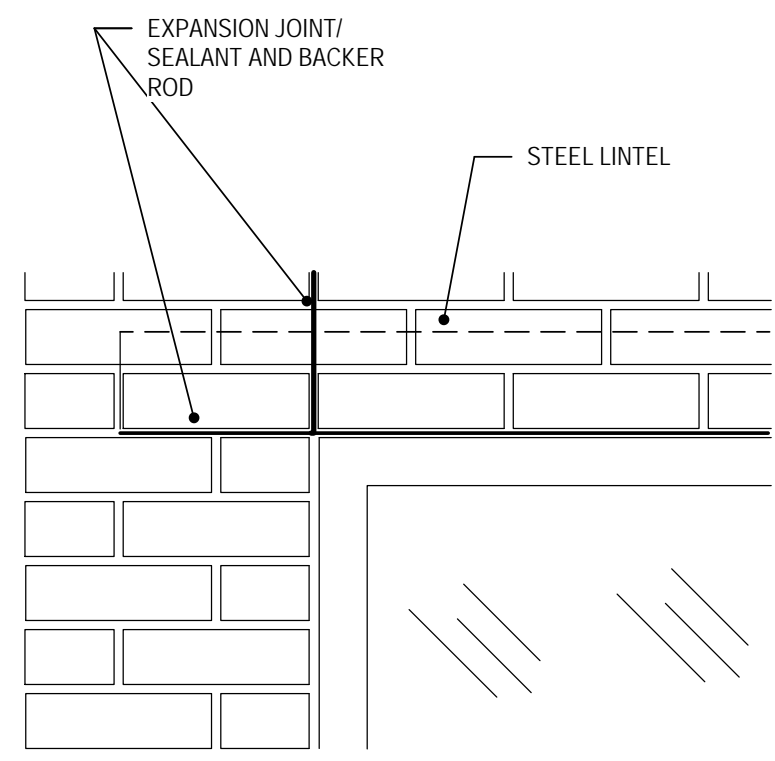
OF 5G SHEETS

KEY TO MATERIALS

	EARTH / COMPACT FILL
	POROUS FILL / GRAVEL
	CONCRETE
	BRICK
	CONCRETE MASONRY UNITS
	CAST STONE
	STEEL / OTHER METALS
	PLYWOOD
	FINISH WOOD
	ACOUSTIC / THERMAL BATT INSULATION
	SPRAY FOAM INSULATION
	RIGID INSULATION
	GYPSUM BOARD
	PLASTER
	EXISTING CONSTRUCTION
	PLASTIC LAMINATE CLAD WOOD
	ACOUSTICAL WALL PANELS
	GROUT

ABBREVIATIONS

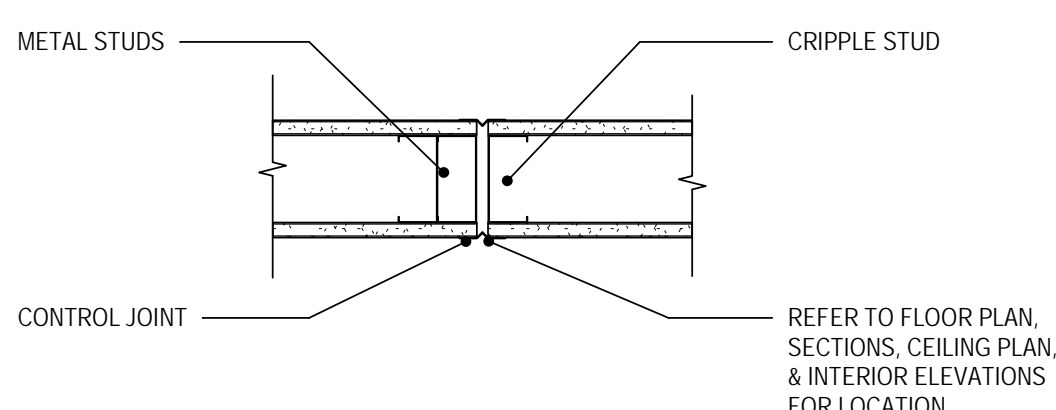
AFF	ABOVE FINISH FLOOR
ACOUS	ACOUSTICAL
ACP	ACOUSTICAL CEILING PANEL
ADJ	ADJACENT
ALT	ALTERNATE
APPROX	APPROXIMATE
ALUM	ALUMINUM
AWP	ACOUSTICAL WALL PANEL
B	BEYOND
BLDG	BUILDING
BLKG	BLOCKING
BO	BY OWNER
BSMT	BASEMENT
BETW	BETWEEN
CONTR	CONTRACTOR
CONTR-INST	CONTRACTOR INST
CG	CORNER GUARDS
CI	CAST-IN-PLACE
CJ	CONTROL JOINT
CO	CASED OPENING
CL	CENTER LINE
CLG	CEILING
CLD	CLOSET
CLR	CLEAR
CMU	CONCRETE MASONRY UNIT
CO	CLEAR-OUT
COL	COLUMN
CONC	CONCRETE
CONTR	CONTINUOUS
CONTR-OR	CONTRACTOR(OR)
CPT	CARPETING
CT	CERAMIC TILE
CW	CASEWORK
DEMO	DEMOLITION
DET	DETAIL
DIA	DIAMETER
DM	DIMENSION
DN	DOWN
DR	DOOR
DS	DOWNSPOUT
DWG	DRAWING
EA	EACH
EJ	EXPANSION JOINT
EL	ELEVATION
ELEV	ELEVATOR
EOS	EDGE OF SLAB
EQ	EQUAL
EWC	ELECTRIC WATER COOLER
EXPD	EXPOSED
EXST	EXISTING TO REMAIN
FD	FLOOR DRAIN
FE	FIRE EXTINGUISHER
FEC	FIRE EXTINGUISHER WITH CABINET
FF	FINISH FLOOR
FHC	FIRE HOSE CABINET
FIN	FINISH
FLR	FLOOR
FT	FOOT/FEET
FTG	FOOTING
FV	FIELD VERIFY
GA	GAUGE
GALV	GALVANIZED
GFRG	GLASS FIBER REINFORCED CONCRETE
GFRG	GLASS FIBER REINFORCED GYPSUM
GL	GLASS
GWB	GYPSUM WALL BOARD
GYP	GYPSUM
HC	HANDICAP
HDW	HARDWARE
HM	HOLLOW METAL
HP	HIGH POINT
HPL	HIGH-PRESSURE LAMINATE
HSS	HOLLOW STRUCTURAL SECTION
HT	HEIGHT
ID	INSIDE DIAMETER
INST	INSTALLED
INSUL	INSULATION
KO	KNOCK OUT
JT	JOINT
KIT	KITCHEN
LAM	LAMINATED
LAV	LAVATORY
LF	LENGTH
LG	LINEAR FEET
LH	LEFT HAND
LWT	LIGHTWEIGHT
MAX	MAXIMUM
MATL	MATERIAL
MB	MARKER BOARD
MEZZ	MEZZANINE
MFG	MANUFACTURER
MIN	MINIMUM
MISC	MISCELLANEOUS
MO	MASONRY OPENING
MTD	MOUNTED
MTL	METAL
MW	MILLWORK
NIC	NOT IN CONTRACT
NTS	NOT TO SCALE
NO	NUMBER
NOM	NOMINAL
OC	ON CENTER
OD	OUTSIDE DIAMETER
OFCI	OWNER FURNISHED INST
OFOW	OWNER FURNISHED INST
OH	OPPOSITE HAND
OPNG	OPENING
OPP	OPPOSITE
OD	OVERFLOW DRAIN
PCF	POUNDS PER CUBIC FOOT
PLAM	PLASTIC LAMINATE
PL	PLATE
PL	PROPERTY LINE
PLYWD	PLYWOOD
PNT	PAINTED
PSF	POUNDS PER SQUARE FOOT
PSI	POUNDS PER SQUARE INCH
PT	PORCELAIN TILE
QT	QUARRY TILE
QTY	QUANTITY
RAD	RADIUS
RCP	REFLECTED CEILING PLAN
RD	ROOF DRAIN
REF	REFERENCED TO
REFG	REFRIGERATOR
REQD	REQUIRED
REV	REVERSE (ISDN)
RH	RIGHT HAND
RM	ROOM
RO	ROUGH OPENING
ROW	RIGHT OF WAY
RTU	ROOF TOP UNIT
SM	SIMILAR
SOG	SLAB-ON-GRADE
SP	SPACE(S)
SPEC	SPECIFICATION
SQ	SQUARE
SST	STAINLESS STEEL
ST	STONE
STC	SOUND TRANSMISSION CLASS
STD	STANDARD
STL	STEEL
TB	TACKBOARD
TBD	TO BE DETERMINED
THK	THICKNESS
TILT	TILE
TOM	TOP OF MASONRY
TOS	TOP OF STEEL
TOW	TOP OF WALL
TP	TANGENT POINT
TP	TYPICAL
TAG	TONGUE & GROOVE
UC	UNDER COUNTER
UL	UNDERWRITERS LABORATORIES
UNO	UNLESS NOTED OTHERWISE
VCT	VINYL COMPOSITION TILE
VF	VERIFY IN FIELD
VW	VENER
VTR	VENT THROUGH ROOF
WC	VINYL WALL COVERING
WC	WATER CLOSET
WD	WOOD
WP	WORKPOINT
WSCT	WANSNOT
W	WITH
WO	WITHOUT
WP	WORK POINT
WT	WEIGHT



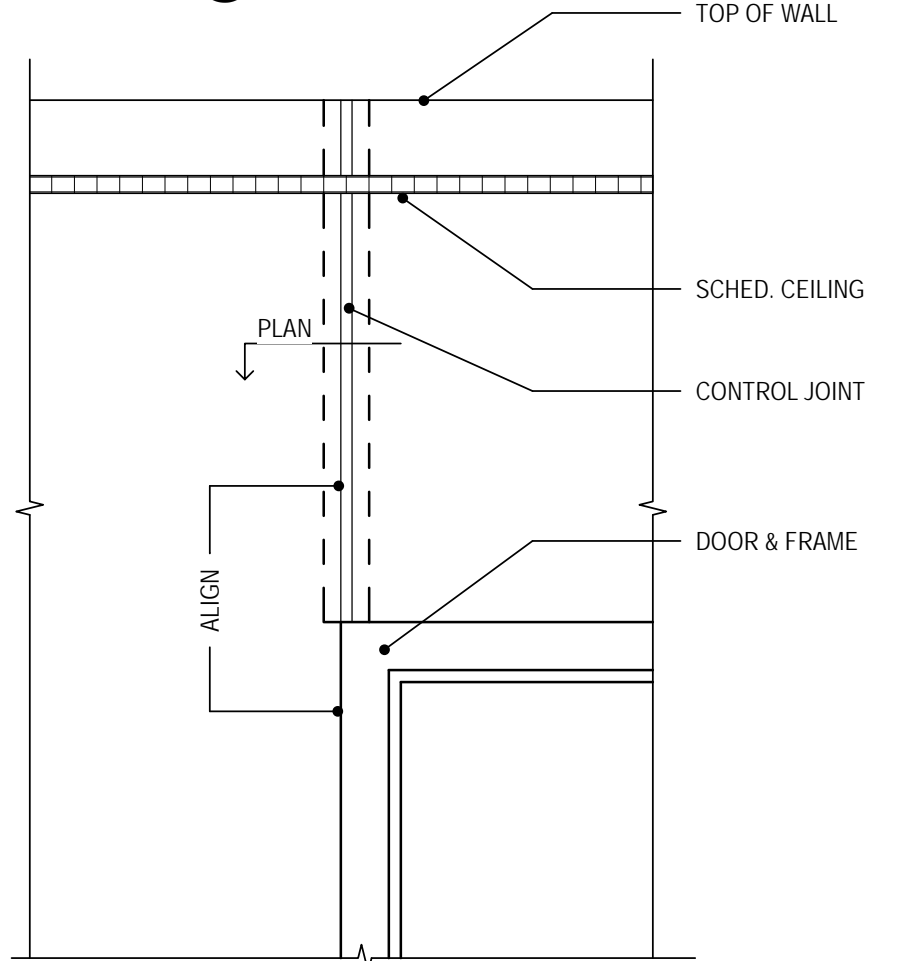
- NOTES:
- PLACE BRICK EXPANSION JOINTS AS FOLLOWS:
 - WITHIN 4'-0" OF OUTSIDE CORNERS UNLESS NOTED OTHERWISE
 - AT OFFSETS AND SETBACKS
 - AT WALL INTERSECTIONS
 - AT CHANGES IN WALL HEIGHT
 - WHERE WALL BACKING SYSTEM CHANGES
 - WHERE SUPPORT OF BRICK VENEER CHANGES
 - FOR BRICKWORK WITHOUT OPENINGS, SPACE NO MORE THAN 25 FT. O.C.
 - FOR BRICKWORK WITH OPENINGS, REFER TO EXTERIOR ELEVATIONS FOR LOCATIONS

TYPICAL BRICK EXPANSION JOINT DETAILS

NOT TO SCALE



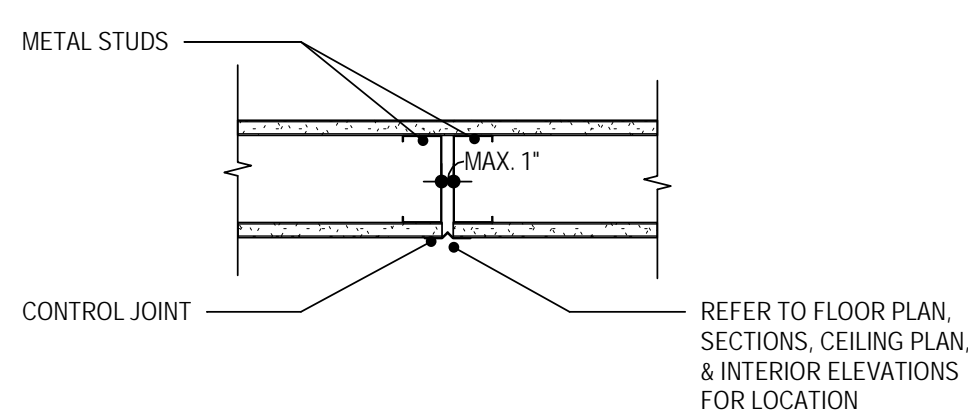
PLAN @ DOOR



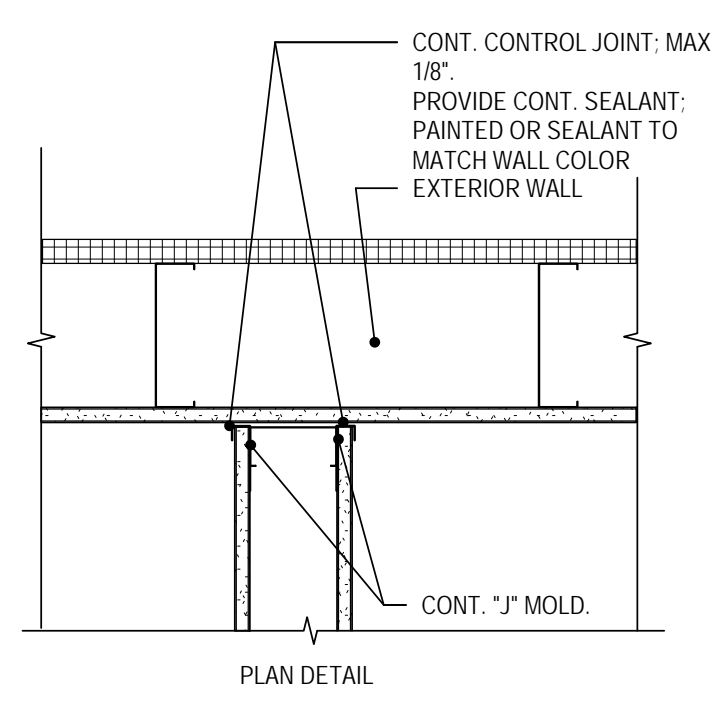
C.J. ELEVATION @ DOOR

TYPICAL GYPSUM BOARD CONTROL JOINT DETAILS

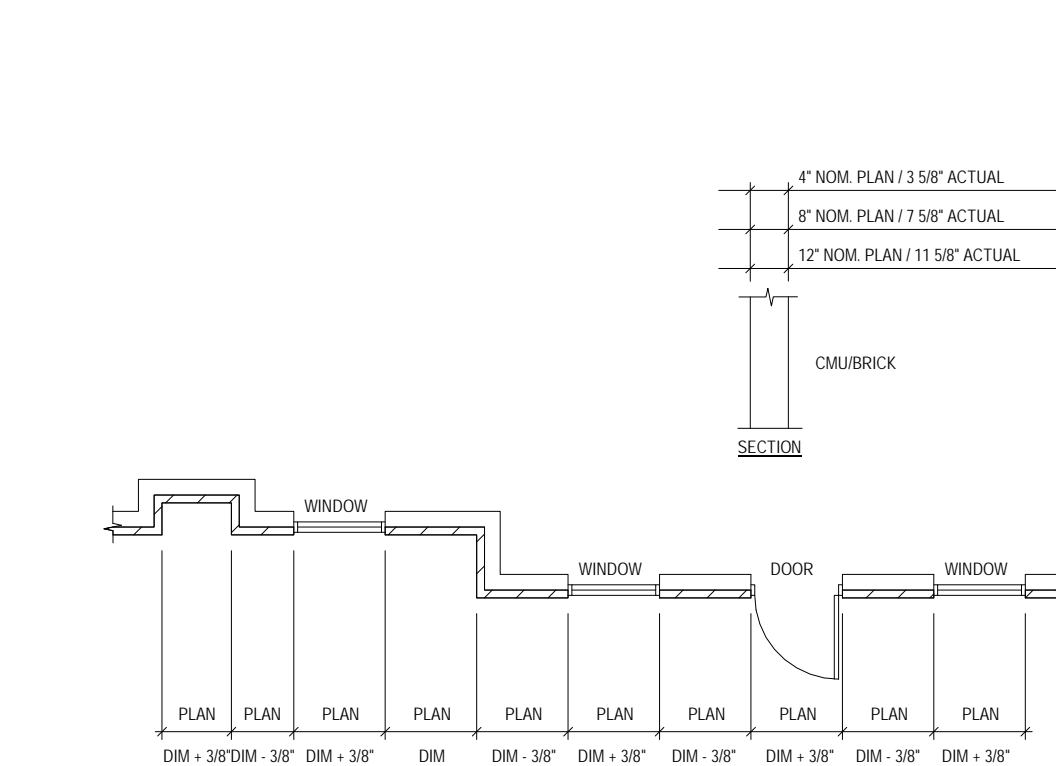
NOT TO SCALE



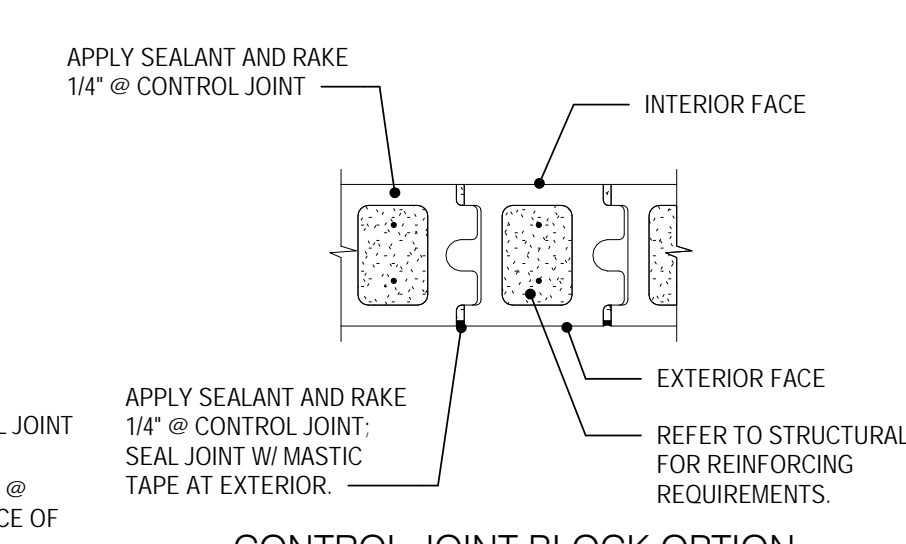
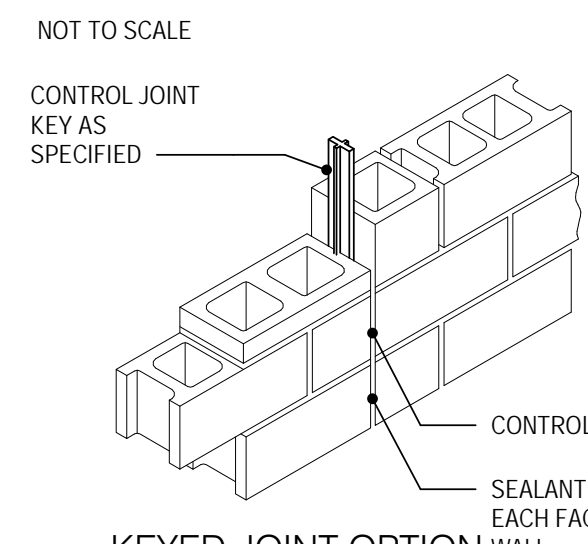
TYPICAL C.J. PLAN @ INTERIOR PARTITION



PLAN DETAIL @ INTERIOR INTERSECTING PARTITIONS



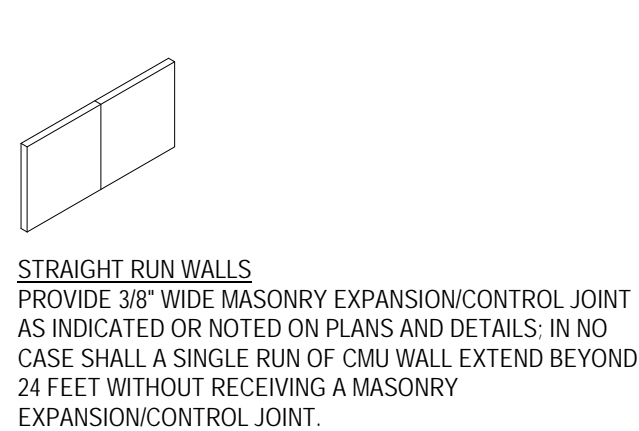
TYPICAL CMU PLAN DIMENSIONS



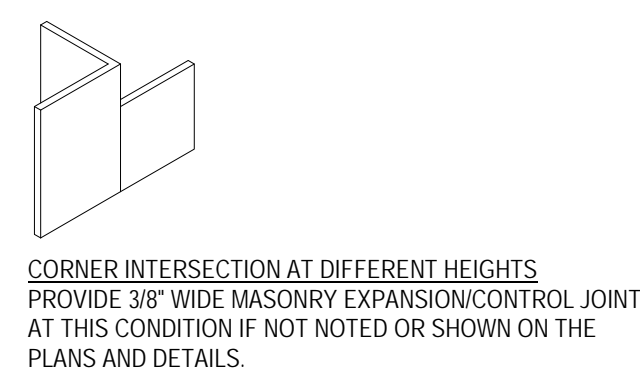
- NOTES:
- USE OF CONTROL JOINT BLOCK OR RUBBER LIKE MATERIAL KEY & SASH BLOCK IS CONTRACTOR OPTION.
 - LOCATE CONTROL JOINTS IN WALLS AT A MAXIMUM OF 32'-0" O.C.
 - HORIZONTAL JOINT REINFORCING TO BE CONTINUOUS AT CONTROL JOINTS.
 - LOCATE CONTROL JOINTS AT FACE OF PLASTER.

TYPICAL CMU EXPANSION/CONTROL JOINT DETAIL

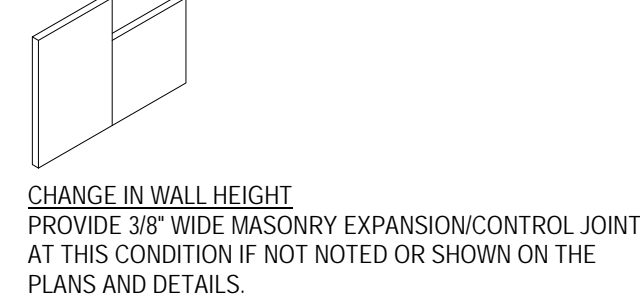
NOT TO SCALE



STRAIGHT RUN WALLS
PROVIDE 3/8" WIDE MASONRY EXPANSION/CONTROL JOINT AS INDICATED OR NOTED ON PLANS AND DETAILS. IN NO CASE SHALL A SINGLE RUN OF CMU WALL EXTEND BEYOND 24 FEET WITHOUT RECEIVING A MASONRY EXPANSION/CONTROL JOINT.



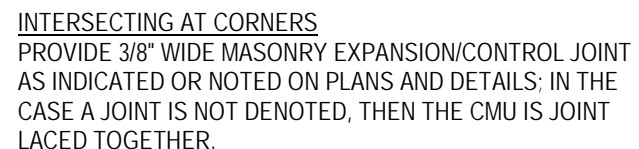
CORNER INTERSECTION AT DIFFERENT HEIGHTS
PROVIDE 3/8" WIDE MASONRY EXPANSION/CONTROL JOINT AT THIS CONDITION IF NOT NOTED OR SHOWN ON THE PLANS AND DETAILS.



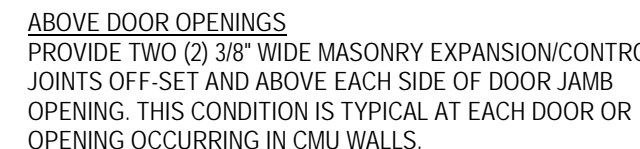
INTERSECTION AT SAME HEIGHT
PROVIDE 3/8" WIDE MASONRY EXPANSION/CONTROL JOINT AS INDICATED OR NOTED ON PLANS AND DETAILS. IN THE CASE A JOINT IS NOT DENOTED, THEN THE CMU IS JOINT LACED TOGETHER.



CHANGE IN WALL HEIGHT
PROVIDE 3/8" WIDE MASONRY EXPANSION/CONTROL JOINT AT THIS CONDITION IF NOT NOTED OR SHOWN ON THE PLANS AND DETAILS.



INTERSECTING AT CORNERS
PROVIDE 3/8" WIDE MASONRY EXPANSION/CONTROL JOINT AS INDICATED OR NOTED ON PLANS AND DETAILS. IN THE CASE A JOINT IS NOT DENOTED, THEN THE CMU IS JOINT LACED TOGETHER.



ABOVE DOOR OPENINGS
PROVIDE TWO (2) 3/8" WIDE MASONRY EXPANSION/CONTROL JOINTS OFF-SET AND ABOVE EACH SIDE OF DOOR JAMB OPENING. THIS CONDITION IS TYPICAL AT EACH DOOR OR OPENING OCCURRING IN CMU WALLS.



INTERSECTING AT DIFFERENT HEIGHTS
PROVIDE 3/8" WIDE MASONRY EXPANSION/CONTROL JOINT AS INDICATED OR NOTED ON PLANS AND DETAILS.



ABOVE WINDOW/WALL PENETRATION OPENINGS
PROVIDE TWO (2) 3/8" WIDE MASONRY EXPANSION/CONTROL JOINTS OFF-SET AND ABOVE EACH SIDE OF OPENING. THIS CONDITION IS TYPICAL AT EACH OPENING OCCURRING IN CMU WALLS.

NOTE: THE ABOVE DRAWINGS REFLECT MANY OF THE CMU WALL CONDITIONS ENCOUNTERED WITHIN THIS PROJECT. WHILE SOME CONDITIONS ARE INDICATED WITHIN DETAILS AND/OR INDICATED ON PLANS (C7), SOME OF THE CONDITIONS SHOWN ABOVE ARE TYPICAL AND TO BE CONSTRUCTED AS SHOWN AND NOTED ABOVE, WHEN THAT PARTICULAR CONDITION IS ENCOUNTERED.

NOTE: HORIZONTAL JOINT REINFORCING CONTINUES THROUGH JOINTS. REFER TO STRUCTURAL DRAWINGS FOR VERTICAL REINFORCING REQUIREMENTS.

TYPICAL CMU JOINT CONDITIONS

NOT TO SCALE