

PLUMBING FLOOR PLAN WATER & GAS - MEZZANINE 2
 SCALE: 1/8" = 1'-0" P2.05

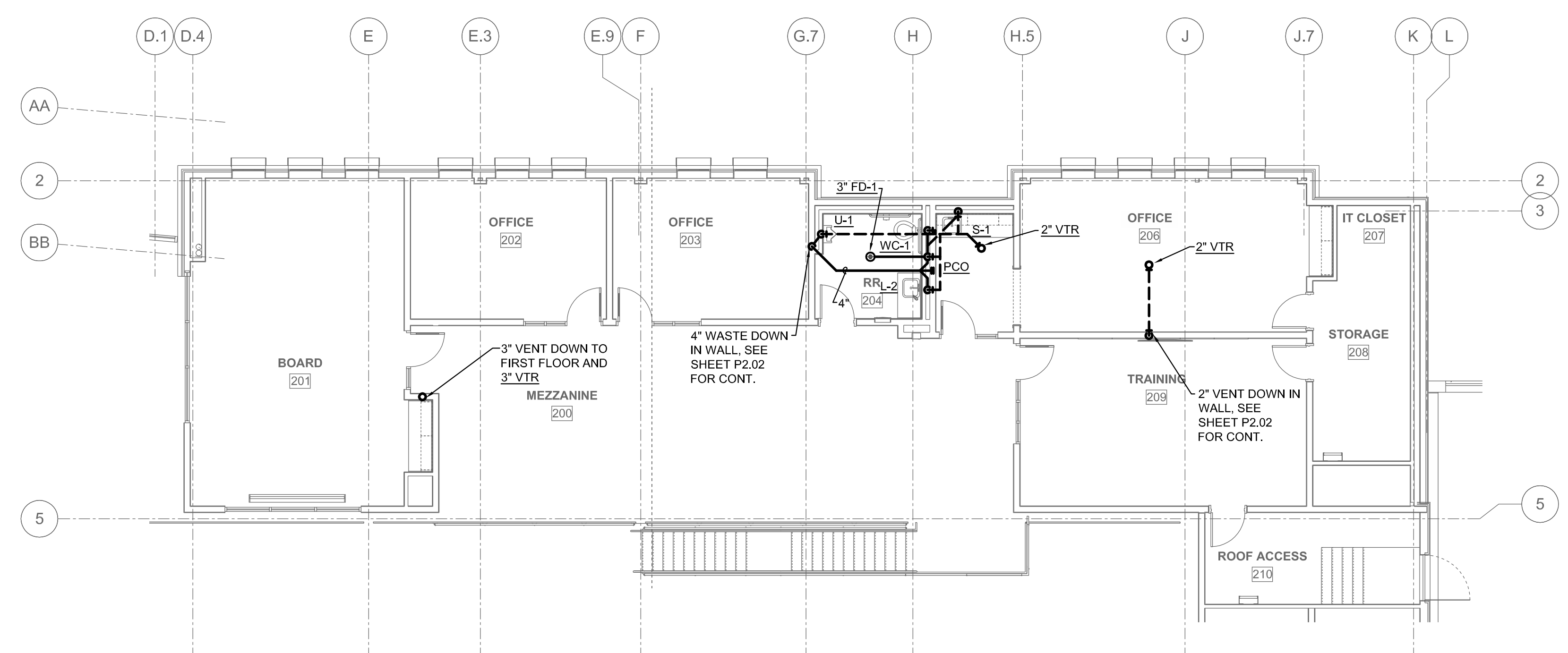
GENERAL PLUMBING NOTES

- A. ALL PIPING PENETRATIONS THROUGH FULL HEIGHT WALLS SHALL BE SEALED TIGHT BOTH FOR FIRE PROTECTION MEANS BUT ALSO FOR SOUND PURPOSES.
- B. REFER TO PLUMBING FIXTURE SCHEDULE, PLUMBING DETAILS, AND PLUMBING ISOMETRICS FOR PIPE SIZES NOT SHOWN IN THIS FLOOR PLAN.
- C. CONTRACTOR SHALL UTILIZE STAINLESS STEEL WALL ACCESS PANELS IN RESTROOMS. ALL OTHER ACCESS PANELS TYPES AND LOCATIONS SHALL BE COORDINATED WITH ARCHITECT PRIOR TO INSTALL.
- D. COORDINATE PLUMBING PIPING INSTALL AND ROUTING WITH DUCTWORK, ESPECIALLY IN EXPOSED CEILING AREAS. PIPING TO BE ROUTED AS HIGH AS POSSIBLE.
- E. HORIZONTAL STORM DRAIN PIPING AND OVERFLOW STORM DRAIN PIPING SHALL BE INSTALLED WITH A MINIMUM SLOPE OF 1/8" PER FOOT.
- F. PROVIDE ADDITIONAL TRAP PRIMERS AS NECESSARY TO PROVIDE CONNECTION TO EACH FLOOR DRAIN AND FLOOR SINK.
- G. REFER TO SHEET M2.04 FOR ADDITIONAL ROOF PLUMBING INFORMATION.

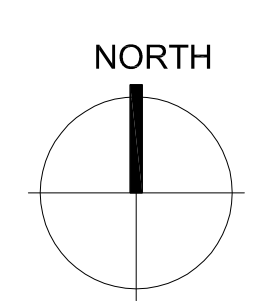
NOTES BY SYMBOL "O"

- ① 2 1/2" CW AND 1 1/2" HW (105°F), SEE SHEET P2.03 FOR CONTINUATION.
- ② 3" GAS (5 PSI) UP THROUGH ROOF, SEE SHEET M2.04 FOR CONTINUATION.
- ③ DROP 2 1/2" CW, 1 1/2" HW (105°F), AND 3" GAS (5 PSI) DOWN IN CHASE, SEE SHEET P2.03 FOR CONTINUATION.

| Revision Schedule | | |
|-------------------|----------------------|---------------|
| Rev. # | Revision Description | Revision Date |
| | | |



PLUMBING FLOOR PLAN WASTE & VENT - MEZZANINE 1
 SCALE: 1/8" = 1'-0" P2.05



MALTZ engineering LLC
 Firm #: 11112 2801 Carmel St
 Phone: 940-382-0949 Denton, TX 76205

TEXAS GUN EXPERIENCE
 GRAPEVINE, TEXAS

2016-028-00
 DECEMBER 1, 2017

PLUMBING FLOOR PLANS - MEZZANINE

P2.05