

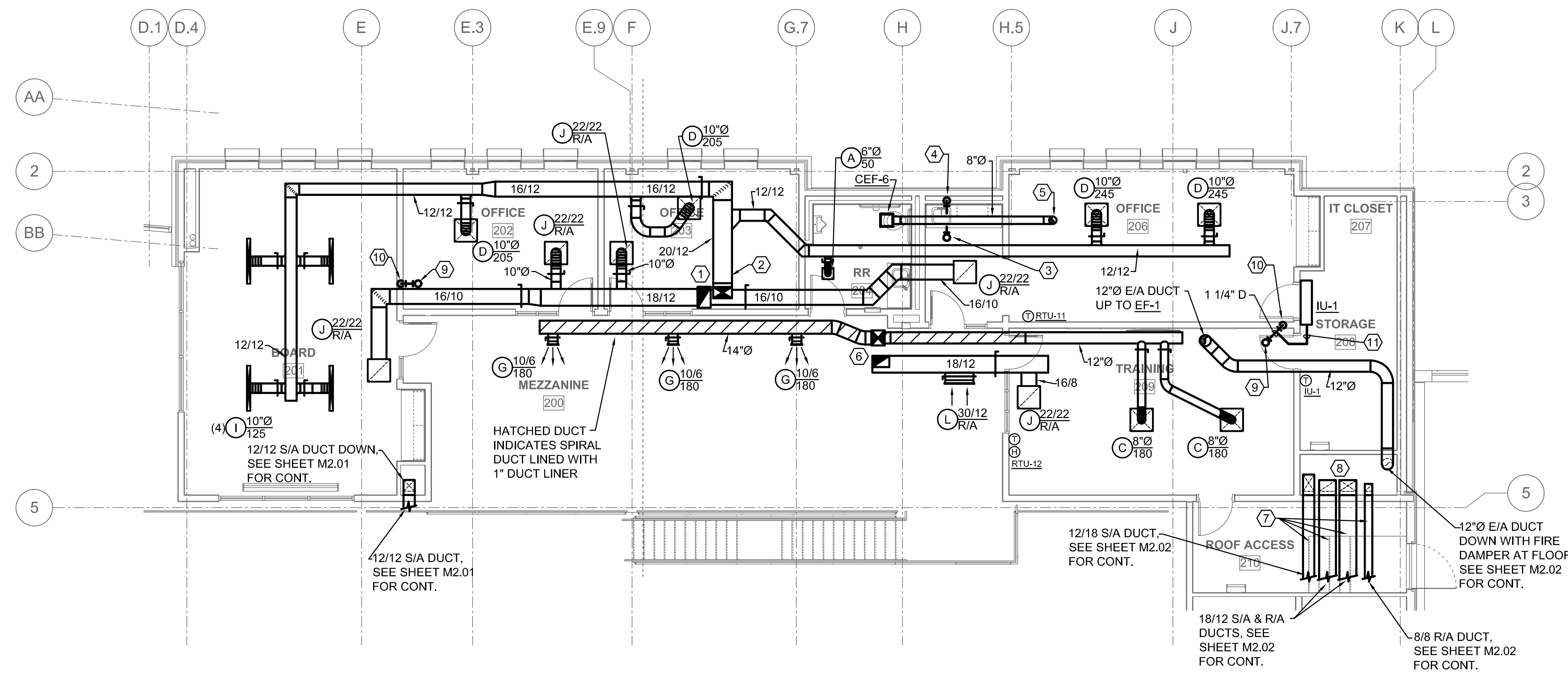
Revision Schedule		
Rev. #	Revision Description	Revision Date

GENERAL MECHANICAL NOTES

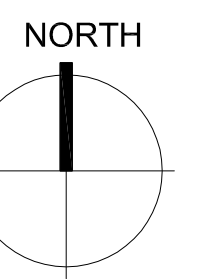
- A. EQUIPMENT SHALL BE INSTALLED WITH REQUIRED CLEARANCES PER CODE AND MANUFACTURER INSTALLATION INSTRUCTIONS.
- B. TRANSITION AS REQUIRED FROM DUCT SIZES INDICATED TO EQUIPMENT CONNECTION SIZES.
- C. COORDINATE MOUNTING HEIGHTS OF EXPOSED DUCTWORK AND AIR DEVICES WITH ARCHITECTURAL DRAWINGS AND ARCHITECT PRIOR TO INSTALL.
- D. COORDINATE AIR DEVICE LOCATIONS WITH ARCHITECTURAL REFLECTED CEILING PLANS.
- E. REFER TO SHEET M2.04 FOR EQUIPMENT LOCATED ON THE ROOF.
- F. COORDINATE AIR DEVICE LOCATIONS WITH ARCHITECTURAL REFLECTED CEILING PLANS AND CEILING FAN LOCATIONS.

NOTES BY SYMBOL "C"

- ① 20/12 S/A AND 22/14 R/A DUCTS UP TO RTU-11.
- ② ROUTE 20/12 S/A UP IN BETWEEN JOISTS THEN OFFSET TO AVOID CONFLICT WITH RETURN AIR DUCT BELOW.
- ③ 3/4" CONDENSATE DRAIN PIPE UP THROUGH ROOF, SEE SHEET M2.04 FOR CONTINUATION.
- ④ DROP 3/4" CONDENSATE DRAIN PIPE DOWN AND CONNECT INTO SINK TAIL PIECE.
- ⑤ 8"Ø EXHAUST DUCT RISER UP TO ROOF HOOD.
- ⑥ 16/14 S/A AND 18/12 R/A DUCTS UP TO RTU-12.
- ⑦ BANK OF FOUR SUPPLY AND RETURN AIR DUCTS TO BE ROUTED HIGH UP IN BETWEEN JOISTS TO ALLOW HEAD-ROOM CLEARANCE ACROSS ROOF ACCESS AREA. ON NORTH END OF ROOF ACCESS AREA 210 OFFSET DUCTS UNDER BEAM PRIOR TO TURN-DOWN ELBOW IN DESIGNATED CHASE. COORDINATE ROUTING WITH ARCHITECTURAL AND STRUCTURAL DRAWINGS.
- ⑧ DROP FOUR MAIN DUCTS DOWN IN CHASE TO FIRST FLOOR, SEE SHEET M2.02 FOR CONTINUATION. PROVIDE FIRE DAMPERS AT FLOOR PENETRATIONS. FIRE DAMPERS SHALL BE TYPE WITH CURTAIN OUT OF THE AIRSTREAM.
- ⑨ RISE 1 1/4" CONDENSATE DRAIN UP THRU ROOF, SEE SHEET M2.04 FOR CONTINUATION.
- ⑩ DROP 1 1/4" CONDENSATE DRAIN PIPE DOWN, SEE SHEET M2.02 FOR CONTINUATION.
- ⑪ EXTEND 3/4" CONDENSATE DRAIN PIPE FROM INDOOR UNIT AND CONNECT INTO 1 1/4" CONDENSATE DRAIN PIPE.



MECHANICAL FLOOR PLAN - MEZZANINE | 1
 SCALE: 1/8" = 1'-0" M2.03



MALTZ engineering LLC
 Firm #: 11112 2801 Carmel St
 Phone: 940-382-0949 Denton, TX 76205

TEXAS GUN EXPERIENCE
 GRAPEVINE, TEXAS

2016-028-00
 DECEMBER 1, 2017

MECHANICAL FLOOR PLAN - MEZZANINE

M2.03