

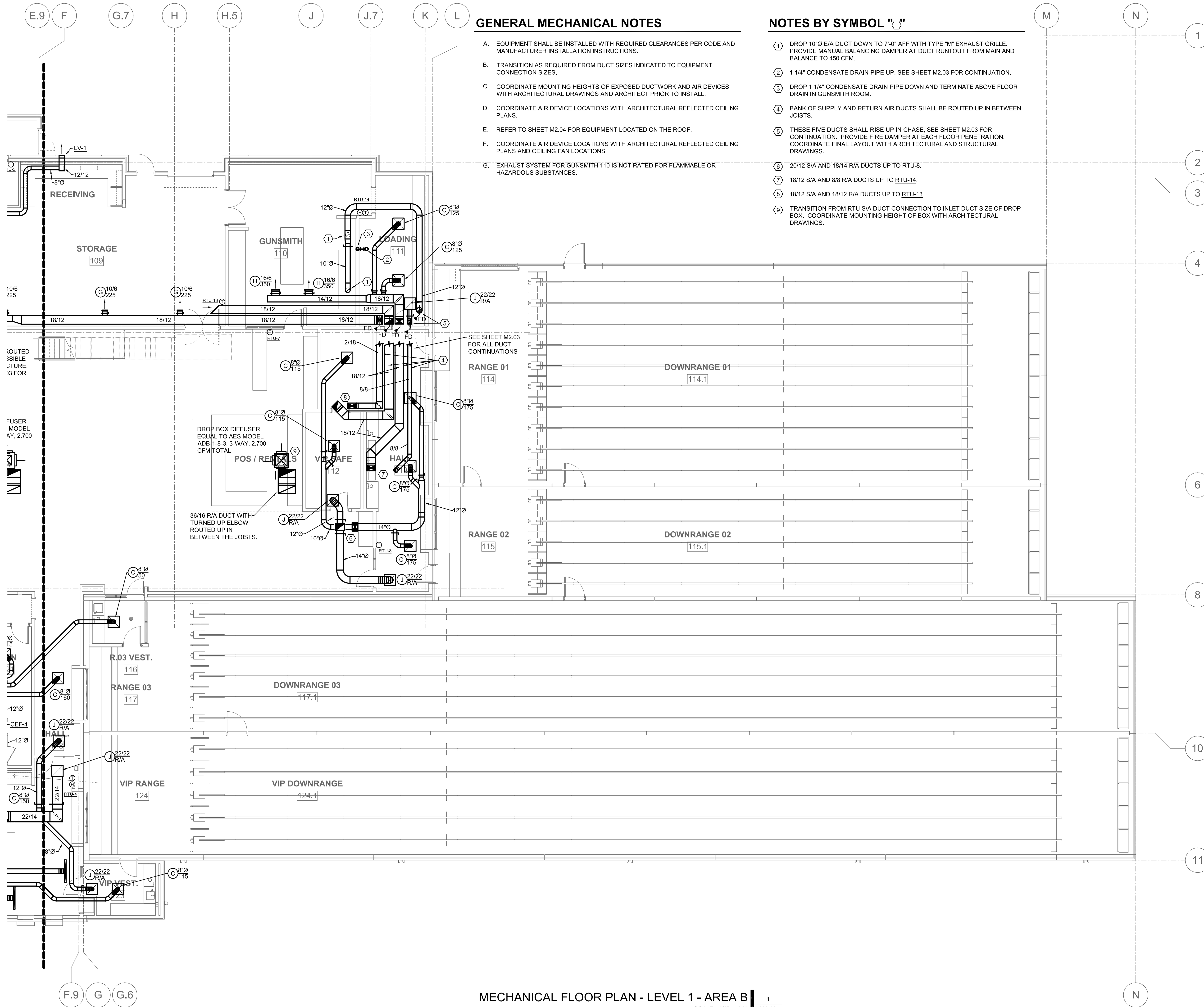
REVIEW ONLY
 DOCUMENT NOT
 INTENDED FOR
 PERMIT, BIDDING OR
 CONSTRUCTION
 MALTZ ENGINEERING LLC
 TIMOTHY M. MALTZ, P.E.
 TX. PE # 94231
 DATE: 12-01-2017

GENERAL MECHANICAL NOTES

- A. EQUIPMENT SHALL BE INSTALLED WITH REQUIRED CLEARANCES PER CODE AND MANUFACTURER INSTALLATION INSTRUCTIONS.
- B. TRANSITION AS REQUIRED FROM DUCT SIZES INDICATED TO EQUIPMENT CONNECTION SIZES.
- C. COORDINATE MOUNTING HEIGHTS OF EXPOSED DUCTWORK AND AIR DEVICES WITH ARCHITECTURAL DRAWINGS AND ARCHITECT PRIOR TO INSTALL.
- D. COORDINATE AIR DEVICE LOCATIONS WITH ARCHITECTURAL REFLECTED CEILING PLANS.
- E. REFER TO SHEET M2.04 FOR EQUIPMENT LOCATED ON THE ROOF.
- F. COORDINATE AIR DEVICE LOCATIONS WITH ARCHITECTURAL REFLECTED CEILING PLANS AND CEILING FAN LOCATIONS.
- G. EXHAUST SYSTEM FOR GUNSMITH 110 IS NOT RATED FOR FLAMMABLE OR HAZARDOUS SUBSTANCES.

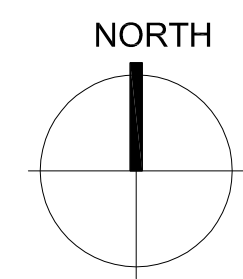
NOTES BY SYMBOL "1"

- ① DROP 10"Ø E/A DUCT DOWN TO 7'-0" AFF WITH TYPE "M" EXHAUST GRILLE. PROVIDE MANUAL BALANCING DAMPER AT DUCT RUNTOUT FROM MAIN AND BALANCE TO 450 CFM.
- ② 1 1/4" CONDENSATE DRAIN PIPE UP, SEE SHEET M2.03 FOR CONTINUATION.
- ③ DROP 1 1/4" CONDENSATE DRAIN PIPE DOWN AND TERMINATE ABOVE FLOOR DRAIN IN GUNSMITH ROOM.
- ④ BANK OF SUPPLY AND RETURN AIR DUCTS SHALL BE ROUTED UP IN BETWEEN JOISTS.
- ⑤ THESE FIVE DUCTS SHALL RISE UP IN CHASE. SEE SHEET M2.03 FOR CONTINUATION. PROVIDE FIRE DAMPER AT EACH FLOOR PENETRATION. COORDINATE FINAL LAYOUT WITH ARCHITECTURAL AND STRUCTURAL DRAWINGS.
- ⑥ 20/12 S/A AND 18/14 R/A DUCTS UP TO RTU-8.
- ⑦ 18/12 S/A AND 8/8 R/A DUCTS UP TO RTU-14.
- ⑧ 18/12 S/A AND 18/12 R/A DUCTS UP TO RTU-13.
- ⑨ TRANSITION FROM RTU S/A DUCT CONNECTION TO INLET DUCT SIZE OF DROP BOX. COORDINATE MOUNTING HEIGHT OF BOX WITH ARCHITECTURAL DRAWINGS.



Revision Schedule

Rev. #	Revision Description	Revision Date



MALTZ engineering LLC
 Firm #: 11112 2801 Carmel St
 Phone: 940-382-0949 Denton, TX 76205

TEXAS GUN EXPERIENCE
 GRAPEVINE, TEXAS

2016-028-00
 DECEMBER 1, 2017

MECHANICAL FLOOR PLAN - LEVEL 1 - AREA B