

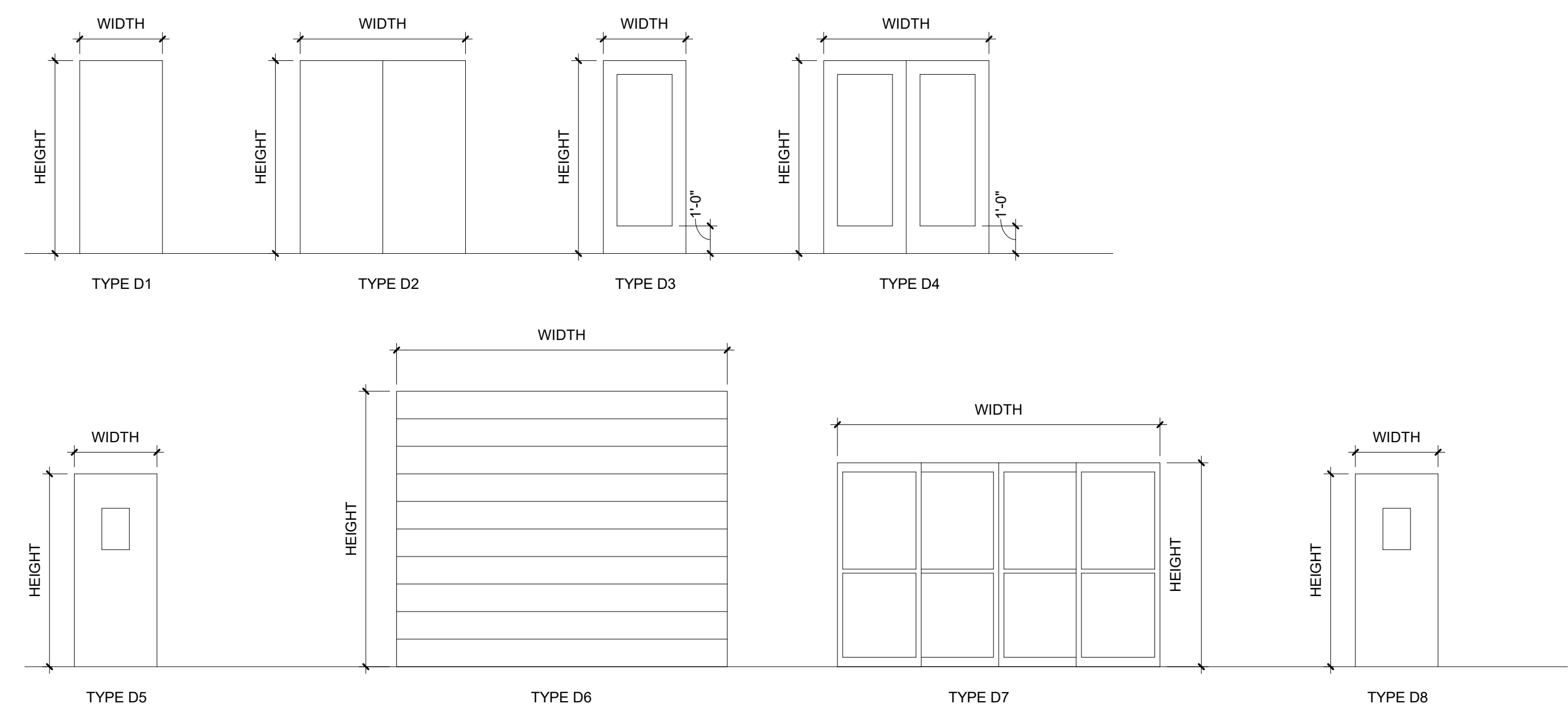
Door Schedule Level ALL																	
MARK	TYPE MARK	DIMENSIONS		DOOR		FRAME		GLAZING	FIRE RATING	ACOUSTIC RATING	DETAILS				HARDWARE	COMMENTS	
		WIDTH	HEIGHT	MATERIAL	FINISH	MATERIAL	FINISH				SILL	JAMB	JAMB	HEAD			
100A	D7	12'-0"	7'-11 3/4"	ALUM/GLZ		ALUM	-	-							001	AUTOMATIC SLIDING	
100B	D7	12'-0"	7'-11 3/4"	ALUM/GLZ		ALUM	-	-							001	AUTOMATIC SLIDING	
103A	D3	3'-0"	8'-0"	ALUM/GLZ		ALUM	-	A							C715AT	SINGLE EXTERIOR	
104A	D1	3'-0"	8'-0"	WD		HM	PAINT								MANUF.		
105A	D1	3'-0"	8'-0"	WD		HM	PAINT								203ST	SINGLE	
106A	D1	3'-0"	8'-0"	WD		HM	PAINT								203ST	SINGLE	
107A	D1	3'-0"	8'-0"	HM		HM	PAINT								205T	SINGLE	
108A	D1	3'-0"	8'-0"	HM		HM	PAINT								715T	SINGLE	
108B	D1	3'-0"	8'-0"	HM		HM	PAINT								715T	SINGLE	
109A	D2	6'-0"	8'-0"	HM		HM	PAINT								C206T	DOUBLE ACTING DOOR	
109B	D1	3'-0"	8'-0"	HM		HM	PAINT								C205T	SINGLE	
109C	D6	8'-0"	8'-0"	STL		STL	-								D002	OVERHEAD DOOR	
110A	D3	3'-0"	8'-0"	ALUM/GLZ		ALUM	-	B							C201AT	SINGLE INTERIOR	
110B	D2	6'-0"	8'-0"	HM		HM	PAINT								502T	DOUBLE	
111A	D1	3'-0"	8'-0"	HM		HM	PAINT								C207T	SINGLE	
112A	D3	3'-0"	8'-0"	ALUM/GLZ		ALUM	-	B							C207AT	SINGLE INTERIOR	
113A	D3	3'-0"	8'-0"	ALUM/GLZ		ALUM	-	C							507AT	SINGLE INTERIOR	
113B	D5	3'-0"	7'-0"	STL/GLZ		-	PAINT	D							401CGT	BULLET RESISTANT	
113C	D5	3'-0"	7'-0"	STL/GLZ		-	PAINT	D							401CGT	BULLET RESISTANT	
114A	D1	3'-0"	8'-0"	HM		HM	PAINT								401CGT	SINGLE	
114B	D1	3'-6"	8'-0"	HM		HM	PAINT								D803LT	SINGLE	
114C	D1	3'-6"	8'-0"	HM		HM	PAINT								D805LT	SINGLE	
114D	D12	10'-6"	9'-8"	STL		STL	PAINT								D002	OVERHEAD DOOR	
115A	D1	3'-6"	8'-0"	HM		HM	PAINT								D803LT	SINGLE	
116A	D5	3'-0"	7'-0"	STL/GLZ		-	PAINT	D							401CGT	BULLET RESISTANT	
116B	D3	3'-0"	8'-0"	ALUM/GLZ		ALUM	-	C							507AT	SINGLE INTERIOR	
117A	D1	3'-6"	8'-0"	HM		HM	PAINT								D803LT	SINGLE	
120A	D1	3'-0"	8'-0"	WD		HM	PAINT								801T	SINGLE	
121A	D1	3'-0"	8'-0"	WD		HM	PAINT								801T	SINGLE	
122A	D3	3'-0"	8'-0"	ALUM/GLZ		ALUM	-	B							C241AT	SINGLE INTERIOR	
122B	D3	3'-0"	8'-0 1/4"	ALUM/GLZ		ALUM	CLEAR ANOD.	A							C715AT	SINGLE EXTERIOR	
123A	D3	3'-0"	8'-0"	ALUM/GLZ		ALUM	-	C							507AT	SINGLE INTERIOR	
123B	D5	3'-0"	7'-0"	STL/GLZ		-	PAINT	D							401CGT	BULLET RESISTANT	
125A	D4	6'-0"	8'-0"	ALUM/GLZ		ALUM	-	B							C710ACT	DOUBLE INTERIOR	
125B	D4	6'-0"	8'-0"	ALUM/GLZ		ALUM	-	B							C710ACT	DOUBLE INTERIOR	
125C	D3	3'-0"	8'-0"	ALUM/GLZ		ALUM	CLEAR ANOD.	A							C715AT	SINGLE EXTERIOR	
125D	D3	3'-1"	8'-0 1/4"	ALUM/GLZ		ALUM	CLEAR ANOD.	A							C715AT	SINGLE EXTERIOR	
126A	D3	3'-0"	8'-0"	WD		HM	PAINT	B							C201T	SINGLE INTERIOR	
126B	D3	3'-0"	8'-0"	ALUM/GLZ		ALUM	-	A							805ALT	SINGLE EXTERIOR	
128A	D1	3'-0"	8'-0"	WD		HM	PAINT								303T	SINGLE	
129A	D1	3'-0"	8'-0"	WD		HM	PAINT								301CT	SINGLE	
201A	D3	3'-0"	8'-0"	WD/GLZ		ALUM	CLEAR ANOD.	B							503T	SINGLE INTERIOR	
202A	D3	3'-0"	8'-0"	WD/GLZ		ALUM	CLEAR ANOD.	B							C201T	SINGLE INTERIOR	
203A	D3	3'-0"	8'-0"	WD/GLZ		ALUM	CLEAR ANOD.	B							C201T	SINGLE INTERIOR	
204A	D1	3'-0"	8'-0"	WD		HM	PAINT								301T	SINGLE	
206A	D3	3'-0"	8'-0"	WD/GLZ		ALUM	CLEAR ANOD.	B							C201T	SINGLE INTERIOR	
208A	D1	3'-0"	8'-0"	WD		HM	PAINT								503T	SINGLE	
208B	D1	3'-0"	8'-0"	WD		HM	PAINT								503T	SINGLE	
209A	D3	3'-0"	8'-0"	WD/GLZ		ALUM	CLEAR ANOD.	B							503T	SINGLE INTERIOR	
210A	D1	3'-0"	7'-0"	HM		HM	PAINT								203ST	SINGLE	

Grand total: 50

GLAZING TYPE LEGEND - (BASIS OF DESIGN)	
A	1" INSULATING UNIT ATLANTICA WITH SUNGATE 500 (3)", PPG (BASIS OF DESIGN) - LOW-E, HIGH PERFORMANCE TINTED, TEMPERED - COLOR: ATLANTICA (FORMERLY SOLARGREEN) PERFORMANCE CRITERIA: U-FACTOR- .29 R-VALUE- 3.5 SHADING COEFFICIENT- .41 SOLAR HEAT GAIN COEFFICIENT-.35 VISIBLE TRANSMISSION-.65 RELATIVE HEAT GAIN- .86
B	1/4" CLEAR, TEMPERED, SAFETY GLAZING
C	CLEAR, TEMPERED, SAFETY GLAZING, ACOUSTIC GLASS (1" INSULATING UNIT)
D	CLEAR, LEVEL 4 BULLET RESISTANT GLAZING
E	CLEAR, LEVEL 4 BULLET RESISTANT GLAZING, LOW-E

NOTES:
1. ALL EXTERIOR GLAZING TO BE 1" INSULATED GLASS TEMPERED WHERE REQUIRED BY CODE U.N.O.
2. ALL INTERIOR GLAZING TO BE ALUMINUM STOREFRONT 1/4" GLASS TEMPERED WHERE REQUIRED BY CODE U.N.O.

- GENERAL NOTES**
- ALL EXIT DOORS SHALL BE OPERABLE FROM THE INSIDE WITHOUT ANY SPECIAL EFFORT OR KNOWLEDGE.
 - ALL EXTERIOR DOORS SHALL INCLUDE CLOSERS, WEATHERSTRIPPING, AND THRESHOLDS.
 - ALL DOORS SHALL INCLUDE DOOR STOPS UNLESS NOTED OTHERWISE.
 - PROVIDE MASTER KEY SETS.
 - ALL DOORS RECEIVING CLOSERS ARE TO BE REINFORCED AT THE POINT OF CLOSER CONNECTION.
 - ALL DOOR HARDWARE SHALL COMPLY WITH TAS.
 - PROVIDE SILENCERS IN ALL FRAMES UNLESS WEATHERSTRIPPING IS PROVIDED.
 - INSTALL DOORS PLUMB AND LEVEL.
 - ENSURE DOORS OPERATE FREELY.
 - PROVIDE GALVANIZED HOLLOW METAL FRAMES AT EXTERIOR DOORS.
 - IF FIELD CUTTING FOR HEIGHT IS NECESSARY, CUT BOTTOM ONLY, 1/2" UNDERCUT MAXIMUM.
 - TEMPERED GLASS WHERE REQUIRED BY CODE.
 - ALL HOLLOW METAL DOORS TO BE INSULATED.
 - REFER TO FINISH LEGEND FOR DOOR AND FRAME FINISHES.



DOOR TYPES
SCALE: 1/4" = 1'-0"

NOT FOR REGULATORY APPROVAL, PERMITTING, OR CONSTRUCTION

JIM THARP
01 DECEMBER 2017

DRAWINGS, SPECIFICATIONS AND OTHER DOCUMENTS, PREPARED BY OXLEY WILLIAMS THARP ARCHITECTS, PLLC ARE INSTRUMENTS OF SERVICE FOR USE SOLELY WITH RESPECT TO THIS PROJECT. THIS INCLUDES DOCUMENTS IN ELECTRONIC FORM. OXLEY WILLIAMS THARP ARCHITECTS, PLLC SHALL BE DEEMED THE AUTHORS AND OWNERS OF THEIR RESPECTIVE INSTRUMENTS OF SERVICE AND SHALL RETAIN ALL COMMON LAW, STATUTORY AND OTHER RESERVED RIGHTS, INCLUDING COPYRIGHTS. THE INSTRUMENTS OF SERVICE SHALL NOT BE USED BY THE OWNER FOR FUTURE ADDITIONS OR ALTERATIONS TO THIS PROJECT OR FOR OTHER PROJECTS, WITHOUT THE PRIOR WRITTEN AGREEMENT OF OXLEY WILLIAMS THARP ARCHITECTS, PLLC. ANY UNAUTHORIZED USE OF THE INSTRUMENTS OF SERVICE SHALL BE WITHOUT LIABILITY TO OXLEY WILLIAMS THARP ARCHITECTS, PLLC AND ITS CONSULTANTS.

Revision Schedule		
Rev. #	Revision Description	Revision Date

OWT ARCHITECTS
509 PECAN STREET
SUITE 100
FORT WORTH, TX 76102
817.993.9844
www.owtarchitects.com

TEXAS GUN EXPERIENCE
1901 SOUTH MAIN STREET
GRAPEVINE, TEXAS 76051

2016-028-00
DECEMBER 01, 2017

DOOR SCHEDULE, DOOR TYPES, & FRAME TYPES

A6.01