

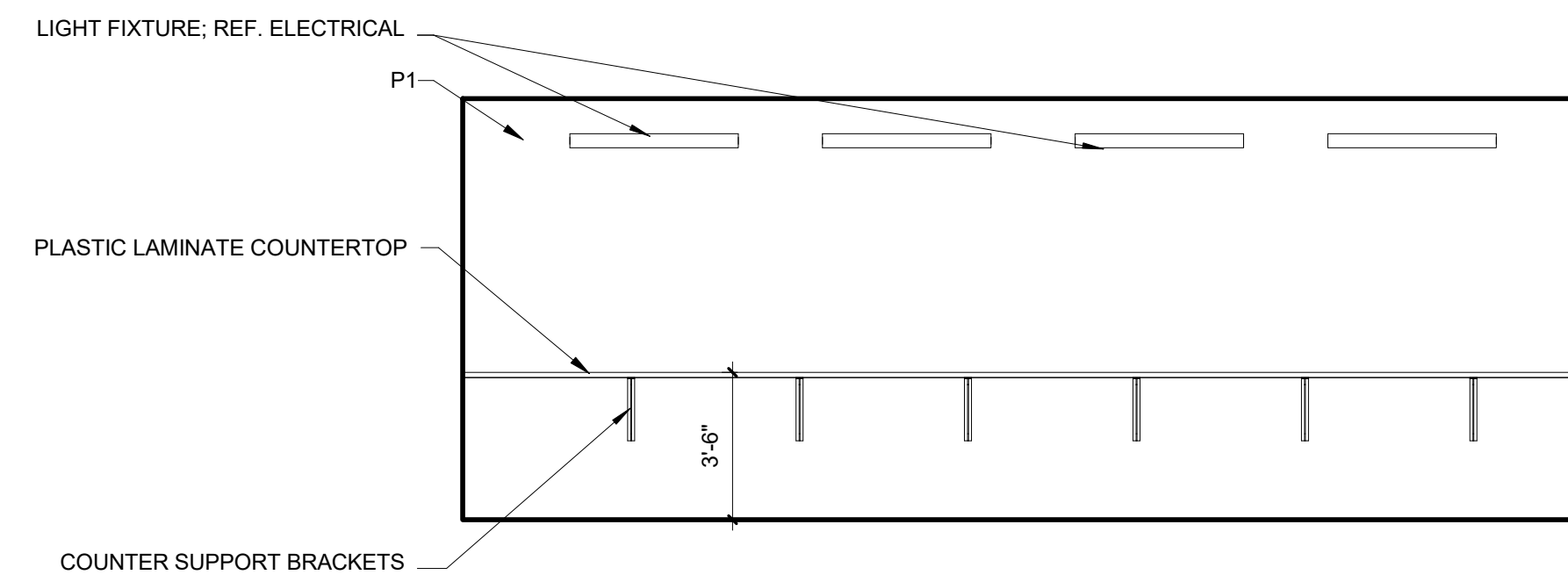
NOT FOR REGULATORY  
APPROVAL, PERMITTING,  
OR CONSTRUCTION

JIM THARP  
01 DECEMBER 2017

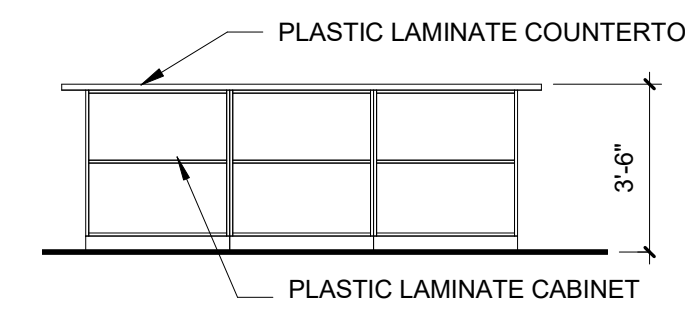
DRAWINGS, SPECIFICATIONS AND OTHER DOCUMENTS, PREPARED BY OXLEY WILLIAMS THARP ARCHITECTS, PLLC ARE INSTRUMENTS OF SERVICE FOR USE SOLELY WITH RESPECT TO THIS PROJECT. THIS INCLUDES DOCUMENTS IN ELECTRONIC FORM. OXLEY WILLIAMS THARP ARCHITECTS, PLLC SHALL BE DEEMED THE AUTHORS AND OWNERS OF THEIR RESPECTIVE INSTRUMENTS OF SERVICE AND SHALL RETAIN ALL COMMON LAW, STATUTORY AND OTHER RESERVED RIGHTS, INCLUDING COPYRIGHTS. THE INSTRUMENTS OF SERVICE SHALL NOT BE USED BY THE OWNER FOR FUTURE ADDITIONS OR ALTERATIONS TO THIS PROJECT OR FOR OTHER PROJECTS, WITHOUT THE PRIOR WRITTEN AGREEMENT OF OXLEY WILLIAMS THARP ARCHITECTS, PLLC. ANY UNAUTHORIZED USE OF THE INSTRUMENTS OF SERVICE SHALL BE WITHOUT LIABILITY TO OXLEY WILLIAMS THARP ARCHITECTS, PLLC AND ITS CONSULTANTS.

Revision Schedule

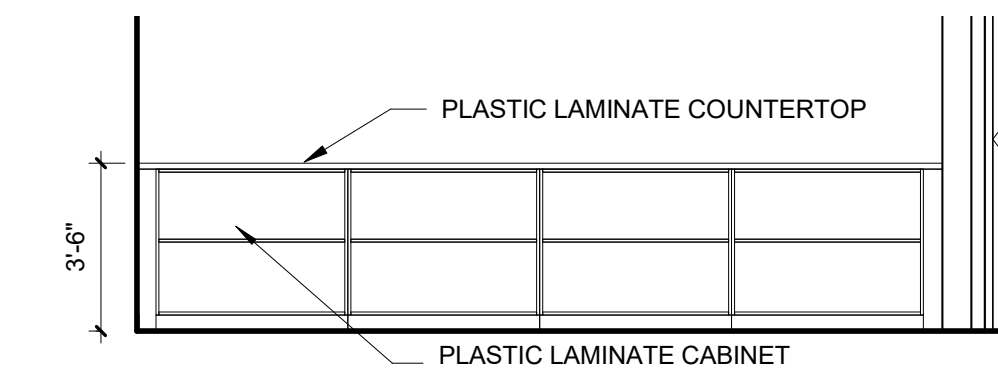
Rev. #	Revision Description	Revision Date



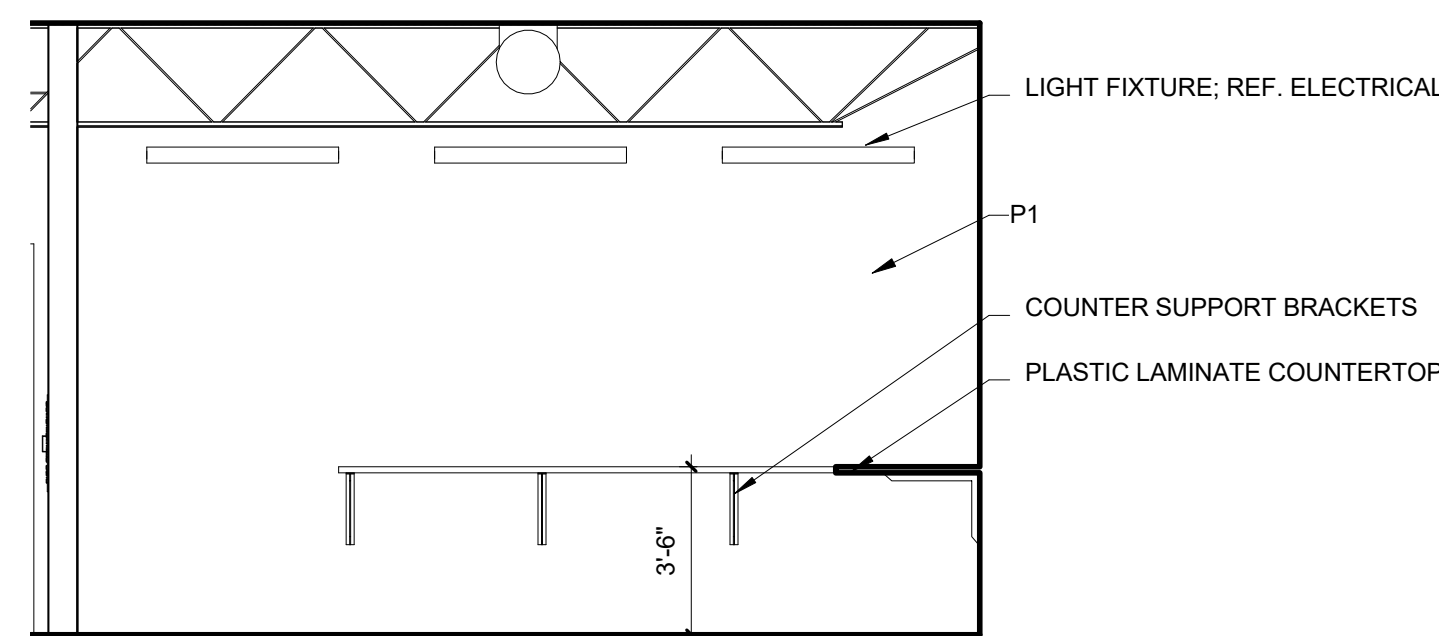
**LOADING EAST** | 9  
SCALE: 1/4" = 1'-0" | A5.06



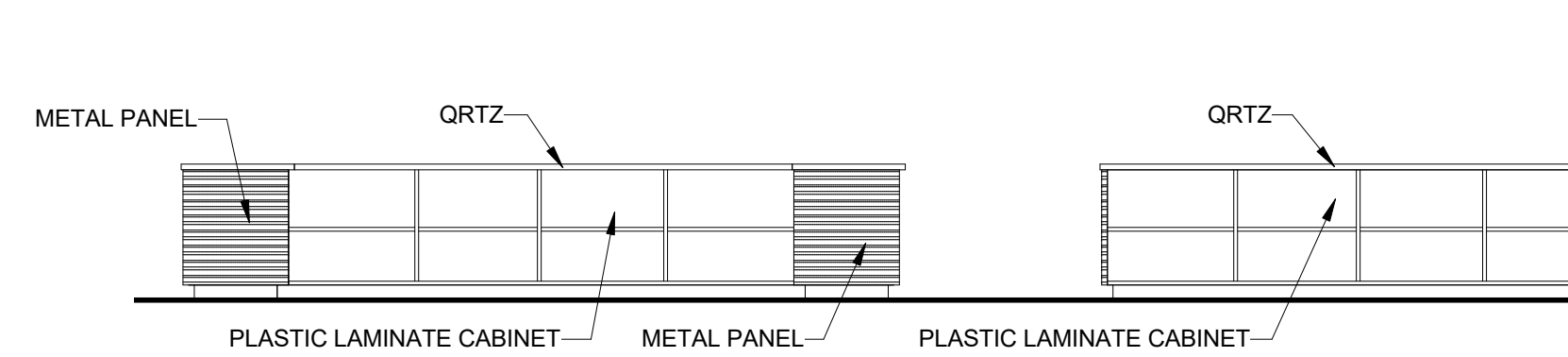
**GUNSMITH ISLAND** | 8  
SCALE: 1/4" = 1'-0" | A5.06



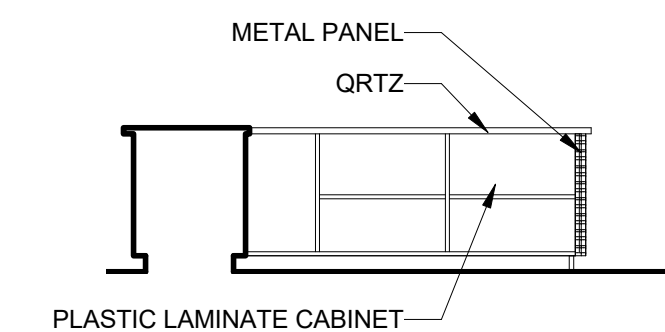
**GUNSMITH WEST** | 7  
SCALE: 1/4" = 1'-0" | A5.06



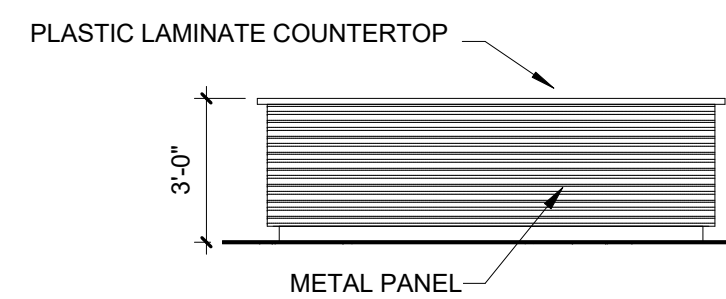
**GUNSMITH NORTH** | 6  
SCALE: 1/4" = 1'-0" | A5.06



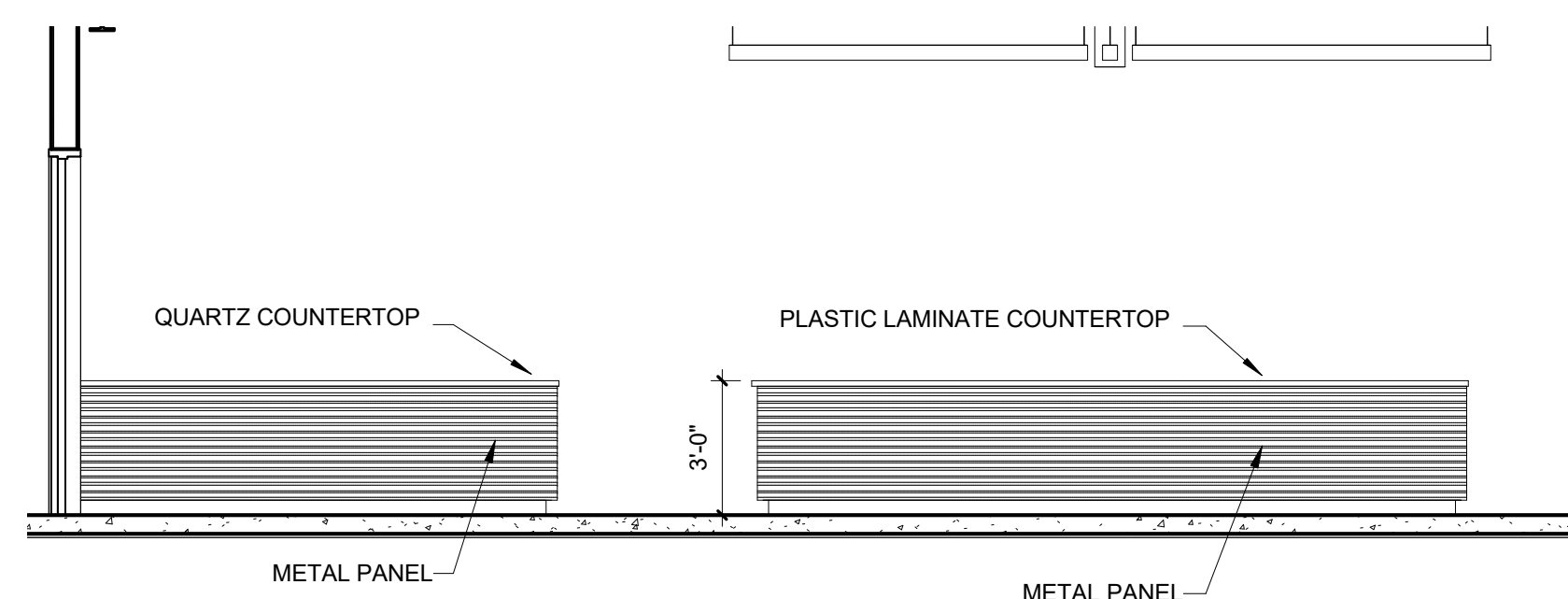
**RANGE CHECK IN COUNTER BACKSIDE** | 5  
SCALE: 1/4" = 1'-0" | A5.06



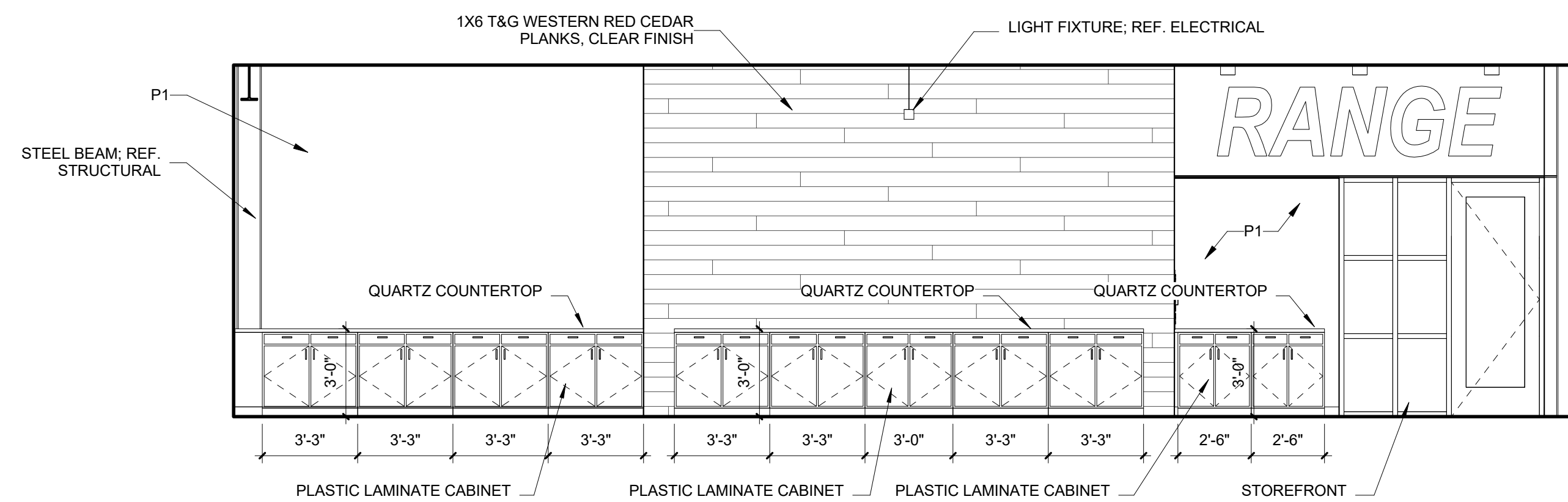
**RANGE CHECK IN COUNTER NORTH BACKSIDE** | 4  
SCALE: 1/4" = 1'-0" | A5.06



**RANGE CHECK IN COUNTER NORTH FRONT** | 3  
SCALE: 1/4" = 1'-0" | A5.06



**RANGE CHECK IN COUNTER FRONT** | 2  
SCALE: 1/4" = 1'-0" | A5.06



**RANGE CHECK IN BACK WALL** | 1  
SCALE: 1/4" = 1'-0" | A5.06

OWT ARCHITECTS

509 PECAN STREET  
SUITE 100  
FORT WORTH, TX 76102  
817.993.9844  
www.owtarchitects.com

**TEXAS GUN  
EXPERIENCE**

1901 SOUTH MAIN STREET  
GRAPEVINE, TEXAS 76051

2016-028-00  
DECEMBER 01, 2017

INTERIOR ELEVATIONS

**A5.06**