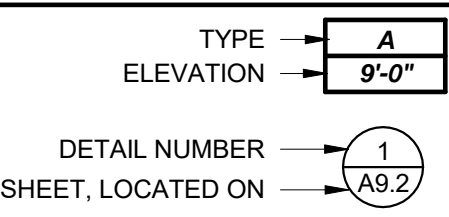


REFLECTED CEILING PLAN LEGEND



CEILING TYPES

- TYPE A** 5/8" GYPSUM BOARD CEILING, PAINTED, NON-SAG, CEILING RATED.
- TYPE B** 2' x 2' LAY-IN, ACOUSTICAL, CEILING TILE WITH TEGULAR EDGE IN SUSPENDED GRID.
- TYPE C** 2' x 2' LAY-IN, VINYL FACED, ACOUSTICAL CEILING TILE IN SUSPENDED GRID.
- TYPE D** 2' x 2' LAY-IN, TIN, CEILING TILE IN SUSPENDED GRID.
- TYPE E** 1 x 6 TONGUE & GROOVE, STAINED, WOOD CEILING.
- TYPE X** OPEN CEILING, EXPOSED STRUCTURE AND DUCTWORK, PAINTED.

EQUIPMENT

AHR GENERAL AIR HOSE REEL
 MODEL NO. A5825 OLP
 MANUFACTURER: REELCRAFT
 WWW.REELCRAFT.COM

NOTES:

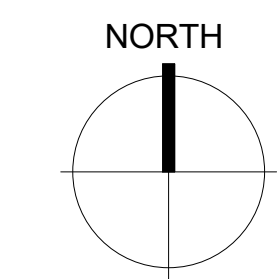
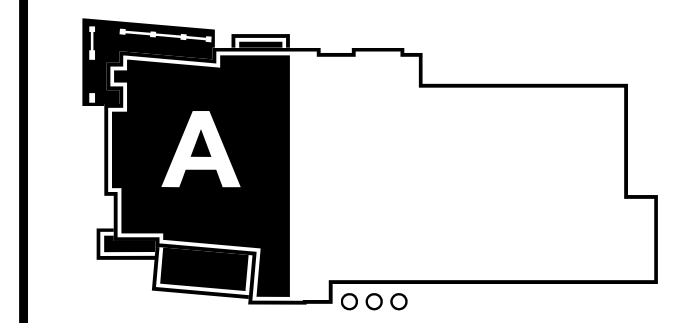
1. REFERENCE ELECTRICAL DRAWINGS FOR LIGHTING FIXTURE SCHEDULE.
2. MECHANICAL AND ELECTRICAL DATA SHOWN FOR REFERENCE ONLY. COORDINATE WITH MECHANICAL AND ELECTRICAL DRAWINGS FOR LIGHT FIXTURES, DUCTS, AND GRILLES. ANY CONFLICT OR DISCREPANCY SHALL BE ADDRESSED WITH THE ARCHITECT AS SOON AS POSSIBLE, PRIOR TO INSTALLATION.
3. LIGHT FIXTURES ARE LOCATED TO CENTERLINE OF ROOM, CORRIDOR, OR GRID AND EQUALLY SPACED UNLESS NOTED OTHERWISE.

NOT FOR REGULATORY APPROVAL, PERMITTING, OR CONSTRUCTION

JIM THARP
 01 DECEMBER 2017

DRAWINGS, SPECIFICATIONS AND OTHER DOCUMENTS, PREPARED BY OXLEY WILLIAMS THARP ARCHITECTS, PLLC ARE INSTRUMENTS OF SERVICE FOR USE SOLELY WITH RESPECT TO THIS PROJECT. THIS INCLUDES DOCUMENTS IN ELECTRONIC FORM. OXLEY WILLIAMS THARP ARCHITECTS, PLLC SHALL BE DEEMED THE AUTHORS AND OWNERS OF THEIR RESPECTIVE INSTRUMENTS OF SERVICE AND SHALL RETAIN ALL COMMON LAW, STATUTORY AND OTHER RESERVED RIGHTS, INCLUDING COPYRIGHTS. THE INSTRUMENTS OF SERVICE SHALL NOT BE USED BY THE OWNER FOR FUTURE ADDITIONS OR ALTERATIONS TO THIS PROJECT OR FOR OTHER PROJECTS, WITHOUT THE PRIOR WRITTEN AGREEMENT OF OXLEY WILLIAMS THARP ARCHITECTS, PLLC. ANY UNAUTHORIZED USE OF THE INSTRUMENTS OF SERVICE SHALL BE WITHOUT LIABILITY TO OXLEY WILLIAMS THARP ARCHITECTS, PLLC AND ITS CONSULTANTS.

Revision Schedule		
Rev. #	Revision Description	Revision Date



OWT ARCHITECTS

509 PECAN STREET
 SUITE 100
 FORT WORTH, TX 76102
 817.993.9844
 www.owtarchitects.com

TEXAS GUN EXPERIENCE

1901 SOUTH MAIN STREET
 GRAPEVINE, TEXAS 76051

2016-028-00
 DECEMBER 01, 2017

REFLECTED CEILING PLAN - LEVEL 1 - AREA A

A2.21