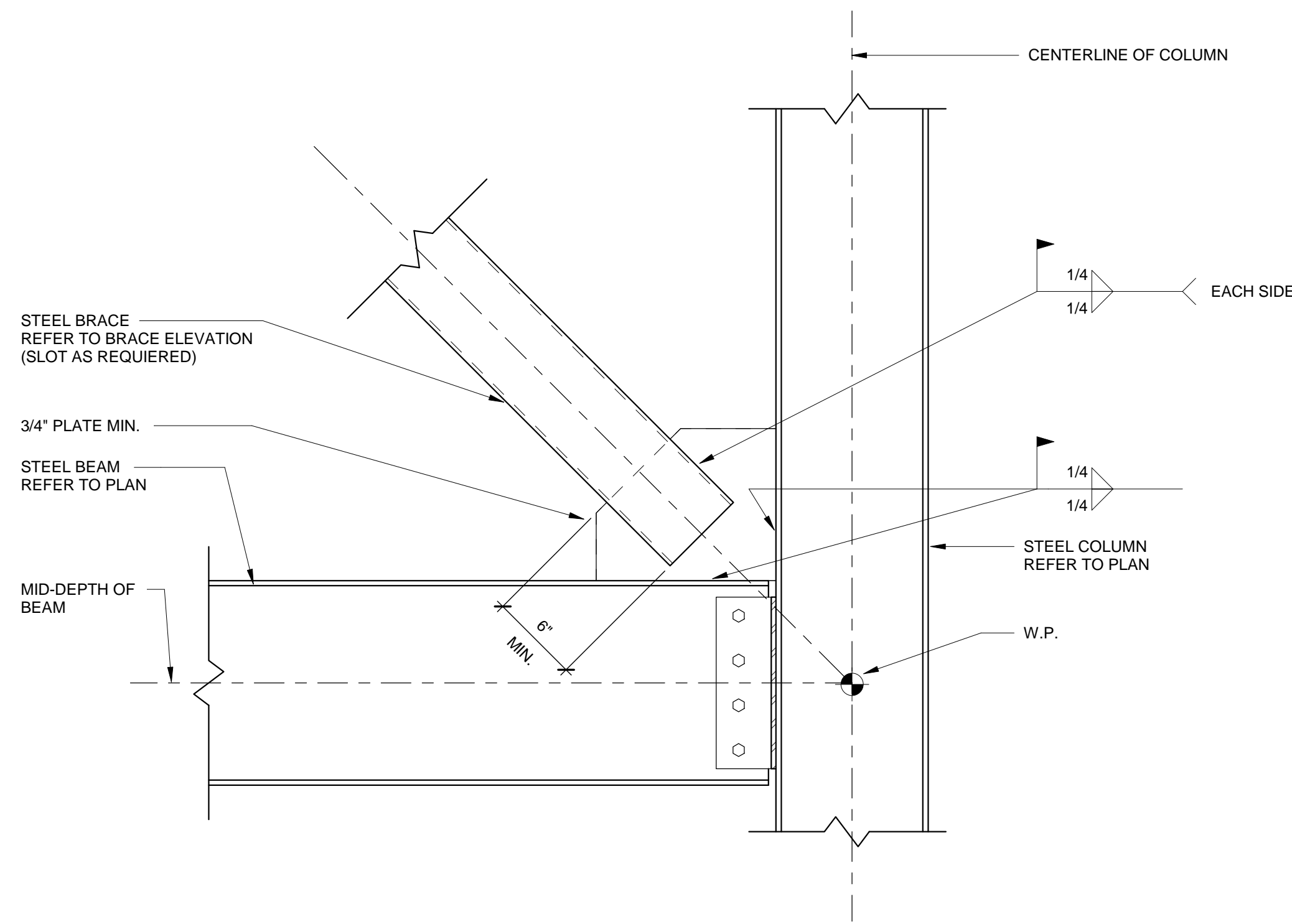


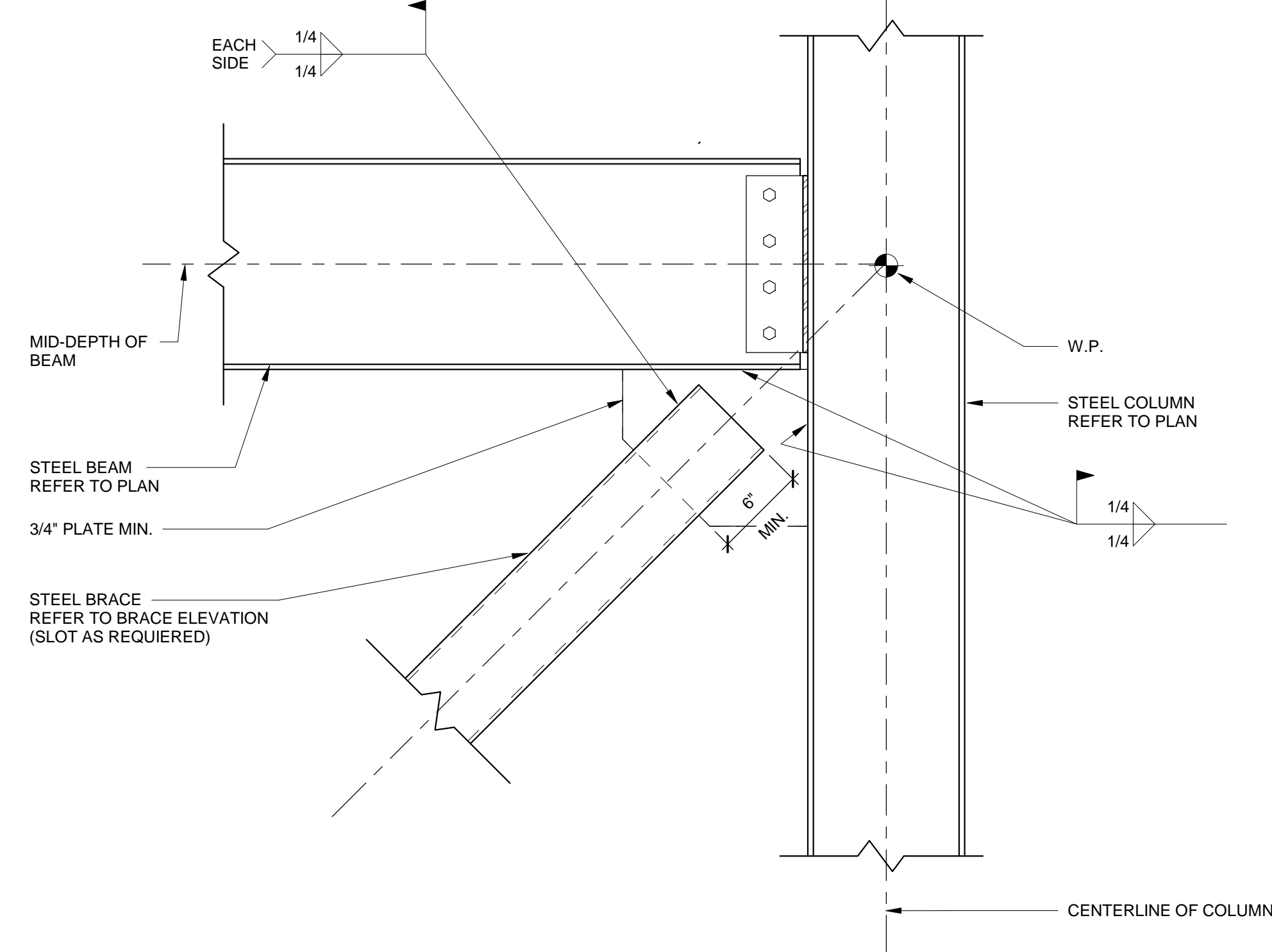
THIS DOCUMENT IS RELEASED ON 12-1-17 FOR THE PURPOSE OF BIDDING ONLY UNDER THE AUTHORITY OF BRYAN WADE GREEN, P.E. 74453. IT IS NOT TO BE USED FOR CONSTRUCTION OR FABRICATION PURPOSES.

Revision Schedule		
Rev. #	Revision Description	Revision Date



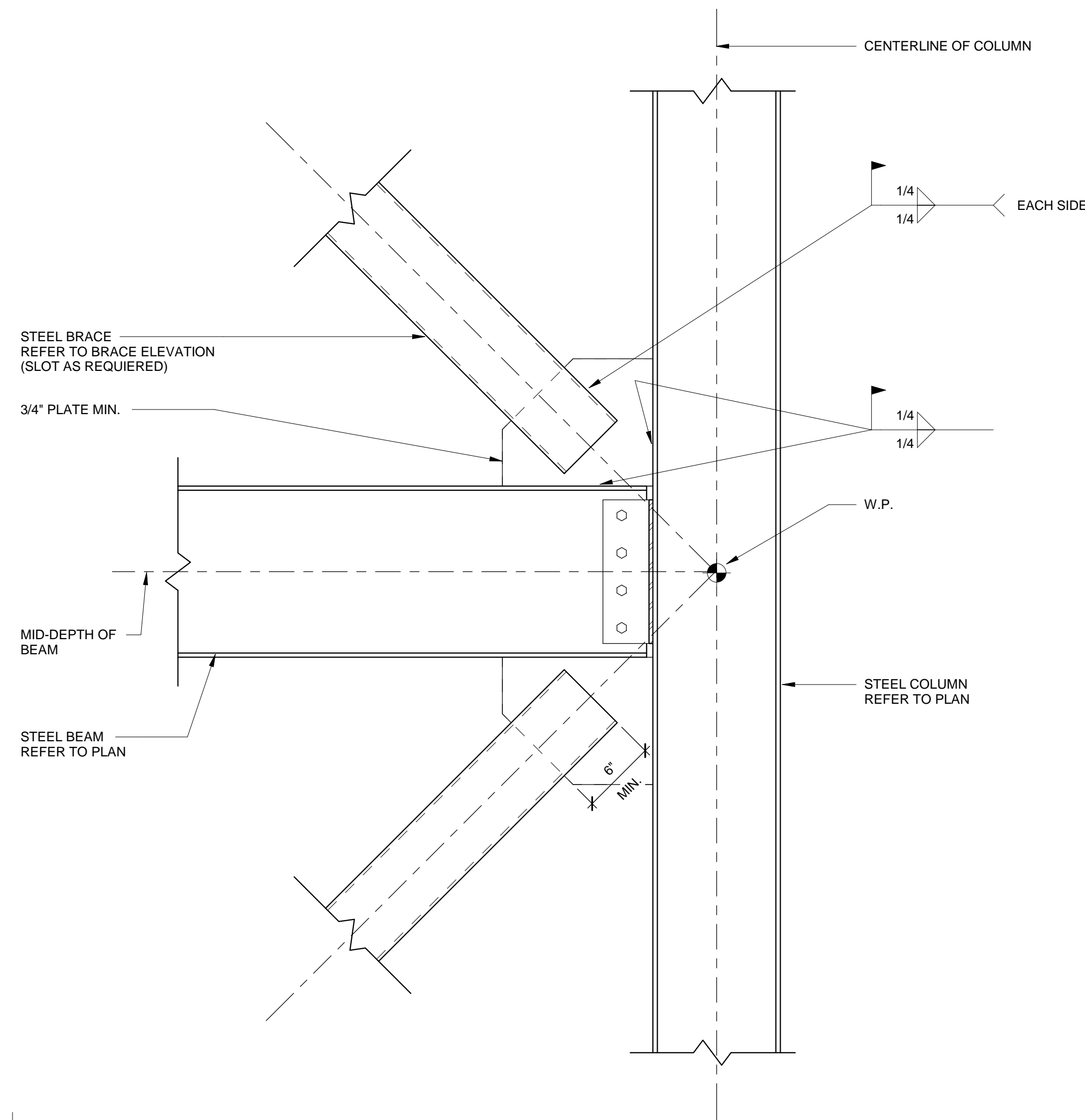
1 DETAIL

1 1/2" = 1'-0" BRACE TO BEAM AT WIDE FLANGE COLUMN



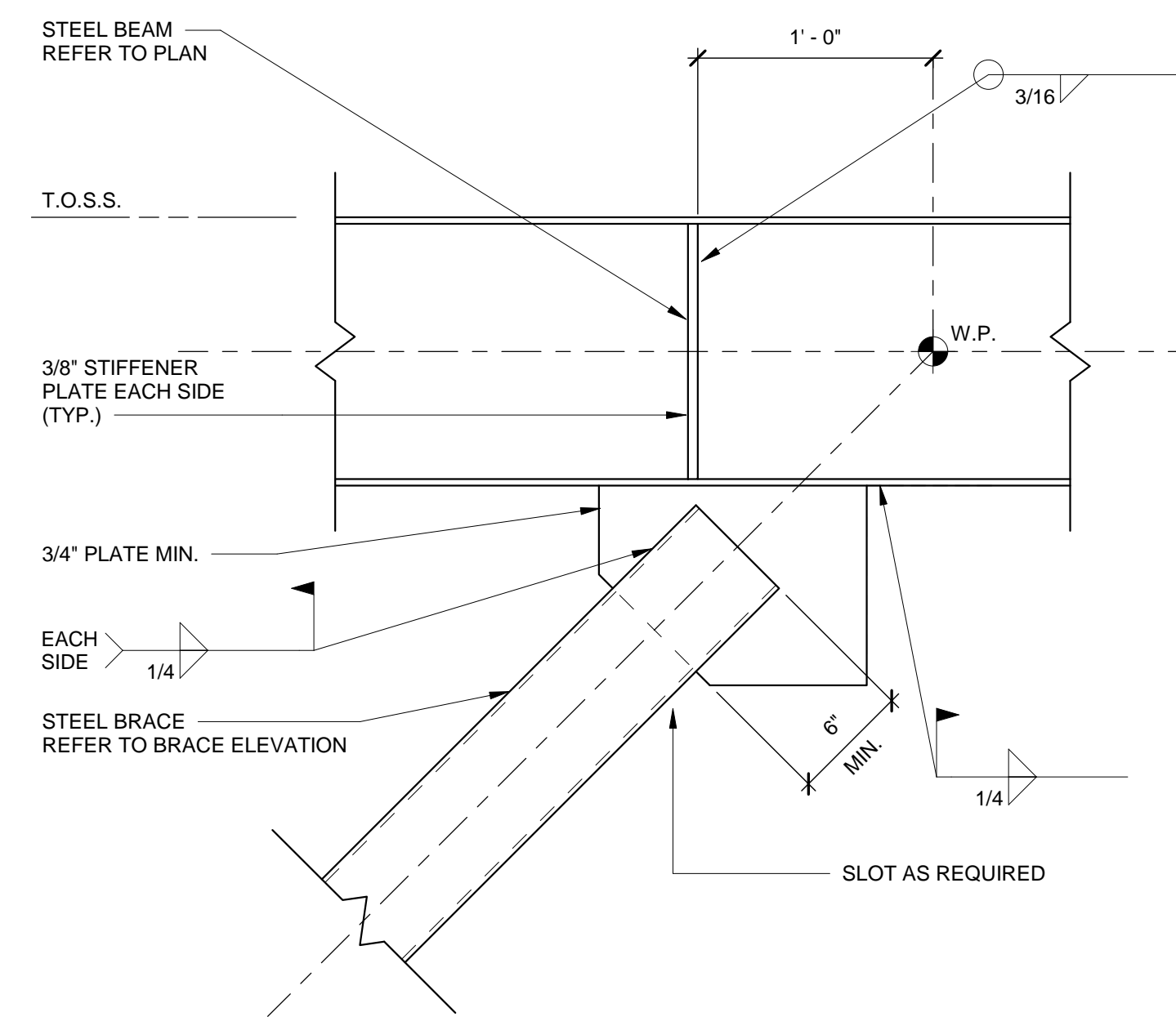
2 DETAIL

1 1/2" = 1'-0" BRACE TO BEAM AT WIDE FLANGE COLUMN



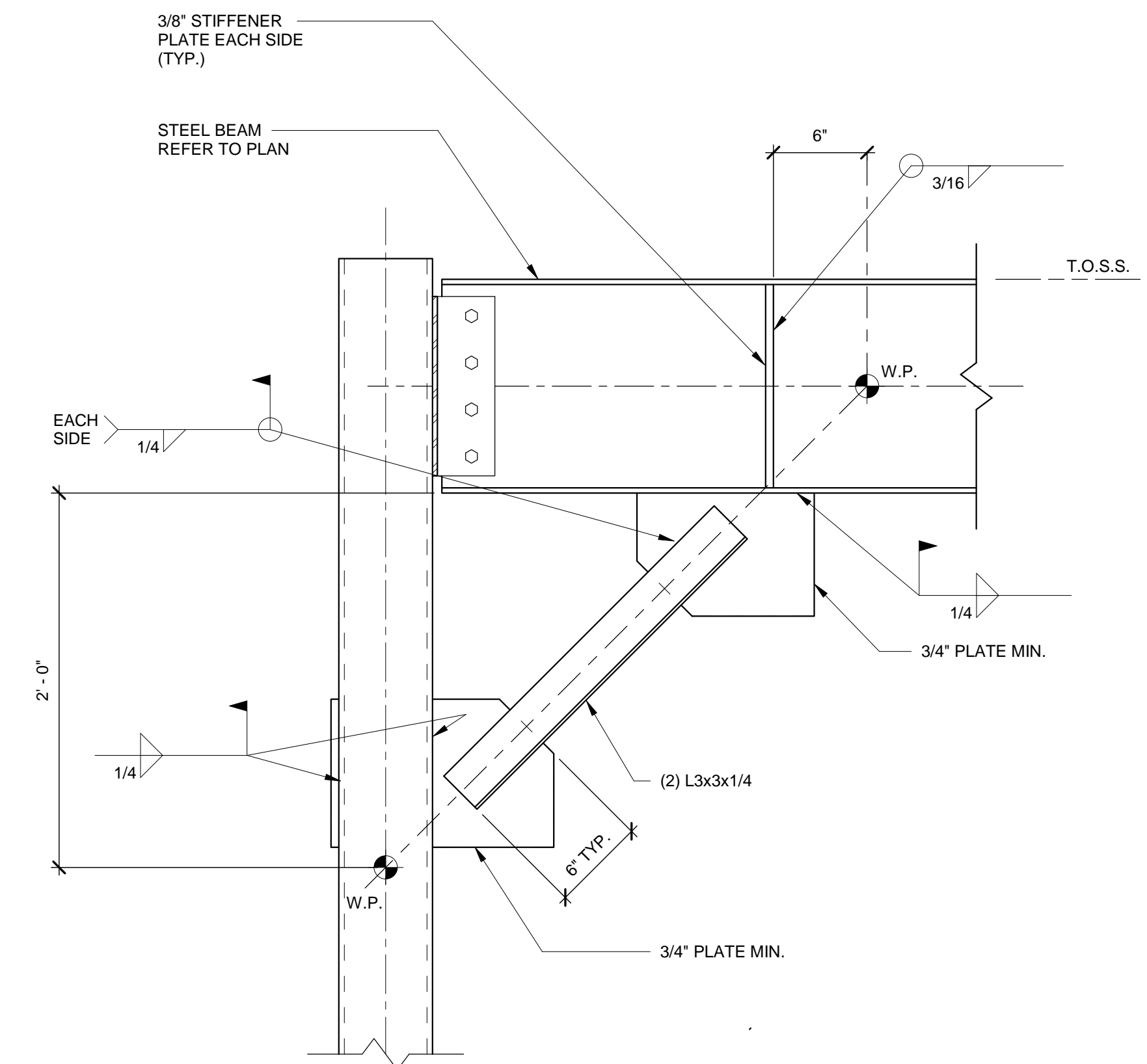
3 DETAIL

1 1/2" = 1'-0" BRACE TO BEAM AT WIDE FLANGE COLUMN



4 DETAIL

1 1/2" = 1'-0" BRACE MEMBER CONNECTION #5



5 DETAIL

1 1/2" = 1'-0" KICK BRACE

FWN&A
 Frank W. Neal & Assoc., Inc.
 1016 W. Broadway Ave. 817-332-1944
 Fort Worth, TX 76104 fwna-eng.com
 Texas firm reg. no. F-000296

TEXAS GUN EXPERIENCE
 GRAPEVINE, TX

217.130.03
 DECEMBER 1, 2017

BRACE DETAILS

S5.5