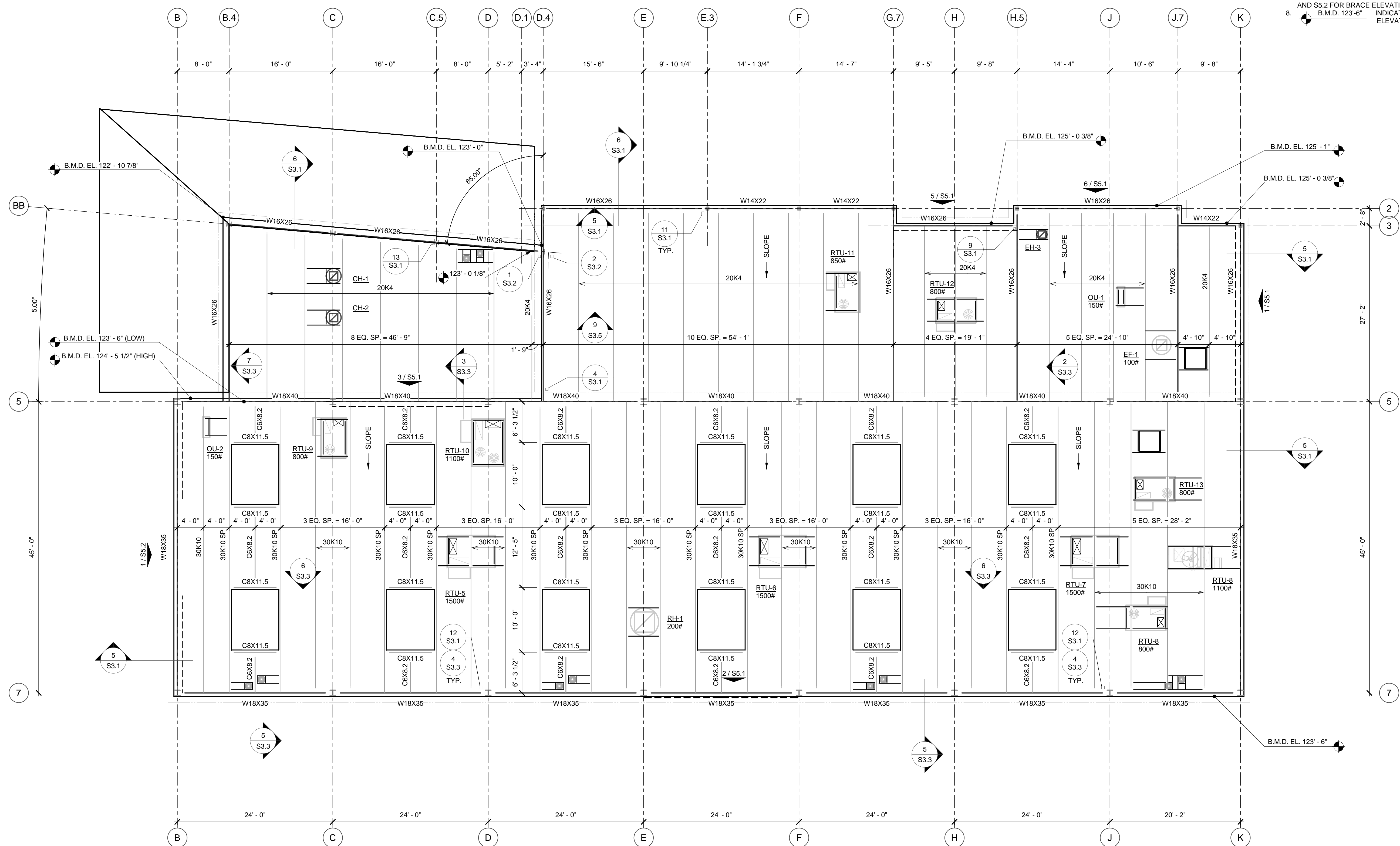


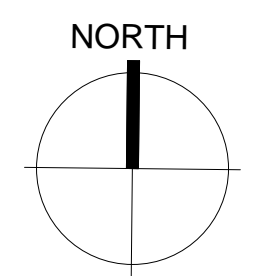
PLAN NOTES:

- IT SHALL BE THE CONTRACTOR'S RESPONSIBILITY TO VERIFY ALL DIMENSIONS AND ELEVATIONS PRIOR TO BEGINNING CONSTRUCTION.
- REFER TO SHEET S0.1 FOR GENERAL NOTES.
- REFER TO SHEET S3.1 FOR TYPICAL DETAILS NOT NOTED ON PLAN.
- REFER TO PLAN FOR BOTTOM OF METAL DECK (B.M.D.) ELEVATIONS.
- REFER TO 3/S3.1 FOR TYPICAL MECHANICAL UNIT CURB SUPPORT DETAIL.
- STEEL JOIST BRIDGING SHALL BE PER THE STEEL JOIST INSTITUTE (SJI) SPECIFICATIONS.
- FRAME # INDICATES BRACE FRAME. REFER TO SHEET S5.1 AND S5.2 FOR BRACE ELEVATIONS.
- B.M.D. 123'-6" INDICATES BOTTOM OF METAL DECK ELEVATION (B.M.D.).

THIS DOCUMENT IS RELEASED ON 12-1-17 FOR THE PURPOSE OF BIDDING ONLY UNDER THE AUTHORITY OF BRYAN WADE GREEN, P.E. 74453. IT IS NOT TO BE USED FOR CONSTRUCTION OR FABRICATION PURPOSES.



Revision Schedule		
Rev. #	Revision Description	Revision Date



1 PLAN
1/8" = 1'-0" High Roof Framing Plan

FWN&A
Frank W. Neal & Assoc., Inc.
1016 W. Broadway Ave. 817-332-1944
Fort Worth, TX 76104 fwna-eng.com
Texas firm reg. no. F-000296

TEXAS GUN EXPERIENCE
GRAPEVINE, TX

217.130.03
DECEMBER 1, 2017

HIGH ROOF FRAMING PLAN

S2.5