

INTERIM REVIEW DOCUMENTS
NOT INTENDED FOR BIDDING
OR CONSTRUCTION
PURPOSES

12.01.17

no.	date	revision

100% BID

date: 12.01.2017

drawn by: JH

project no: 41-17

**DAVID McCASKILL
DESIGN GROUP**

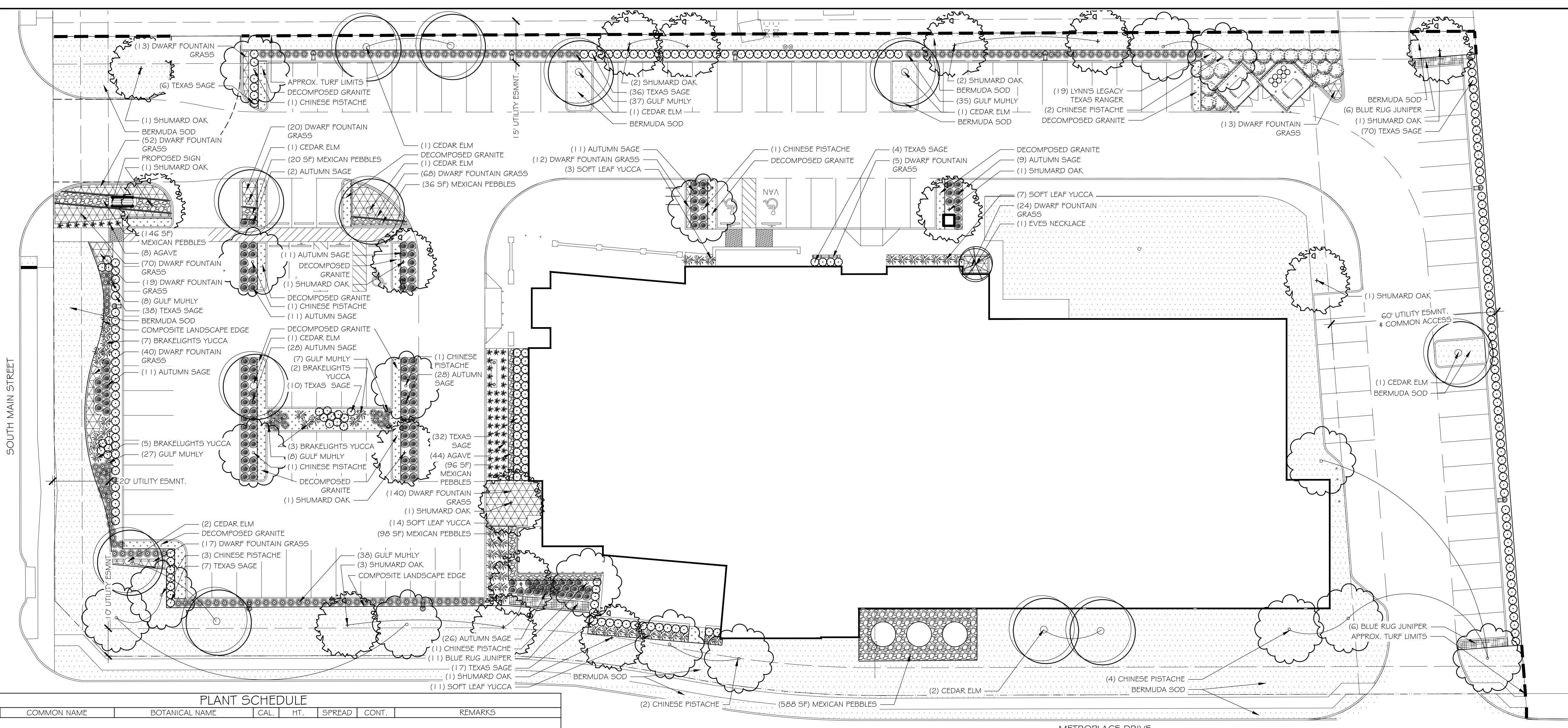
250 Miron Drive
Southlake, Texas
e: david@dmccaskilldesign.com, t: 817.709.2084



sheet

LA1.0

SHEET 1 OF 2



PLANT SCHEDULE							
QUANTITY	COMMON NAME	BOTANICAL NAME	CAL.	HT.	SPREAD	CONT.	REMARKS
SHRUBS							
19	LYNN'S LEGACY TEXAS RANGER	LEUCOPHYLLUM LANGMANIAE LYNN'S LEGACY	-	48" MIN	24" MIN	3 GAL.	4" O.C. OR AS INDICATED ON PLANS
224	TEXAS SAGE	LEUCOPHYLLUM CANDIDUM THUNDER CLOUD	-	24" MIN	24" MIN	3 GAL.	3" O.C. OR AS INDICATED ON PLANS
137	AUTUMN SAGE	SALVIA GREGGII 'FURMAN'S RED'	-	36" MIN	24" MIN	3 GAL.	3" O.C. OR AS INDICATED ON PLANS
35	SOFT LEAF YUCCA	YUCCA RECURVIFOLIA	-	24" MIN	36" MIN	5 GAL.	4" O.C. OR AS INDICATED ON PLANS
17	BRAKELIGHTS YUCCA	HESPERALOE PARVIFLORA 'PERPA' PLANT PATENT #21,729	-	24" MIN	36" MIN	3 GAL.	4" O.C. OR AS INDICATED ON PLANS
52	BLUE GLOW AGAVE	AGAVE 'BLUE GLOW'	-	12" MIN	24" MIN	3 GAL.	2.5' O.C. OR AS INDICATED ON PLANS
ORNAMENTAL GRASSES							
161	GULF MUHLY	MUHLENBERGIA CAPILLARIS	-	36" MIN	24" MIN	3 GAL.	3" O.C. OR AS INDICATED ON PLANS
493	DWARF FOUNTAIN GRASS	PENNISETUM ALOPECUROIDES 'HAMELI'	-	12" MIN	18" MIN	1 GAL.	18" O.C. TRIANGULAR SPACING
TREES							
16	SHUMARD OAK	QUERCUS SHUMARDII	3"	10' MIN	8'-10'	B4B	STRAIGHT, FULL # MATCHED
12	CEDAR ELM	ULMUS CRASSIFOLIA	3"	10' MIN	8'-10'	B4B	STRAIGHT, FULL # MATCHED
17	CHINESE PISTACHE	PISTACIA CHINENSIS	3"	10' MIN	8'-10'	B4B	STRAIGHT, FULL # MATCHED
1	EVE'S NECKLACE	SOPHORA AFFINIS	-	8' MIN	6'-8'	B4B	3 TRUNK MAX
GROUND COVER							
23	BLUE RUG JUNIPER	JUNIPERUS HORIZONTALIS 'WILTONI'	-	-	-	1 GAL.	36" O.C. TRIANGULAR SPACING
OTHER							
2,185 LF	BED EDGING	COMPOSITE LANDSCAPE EDGE 6"	-	-	-	-	INSTALL 1" ABOVE ADJACENT GRADE WITH STAKES
1,353 SF	DECOMPOSED GRANITE	-	-	-	-	-	AS SPEC'D REF. DET. 3/LA2.0
1,004 SF	MEXICAN BEACH PEBBLES	-	-	-	-	-	AS SPEC'D REF. DET. 4/LA2.0
TURF							
26,297 SF	BERMUDA GRASS	CYNODON DACTYLON	-	-	-	-	SOD HAND LAID PANELS

GENERAL LANDSCAPE NOTES

- CONTRACTOR IS RESPONSIBLE FOR VERIFYING LOCATIONS OF UNDERGROUND UTILITIES AND STRUCTURES PRIOR TO CONSTRUCTION.
- LANDSCAPE CONTRACTOR SHALL COORDINATE WITH ALL OTHER TRADES. THE LANDSCAPE CONTRACTOR SHALL PROTECT ALL LANDSCAPE MATERIALS FROM DAMAGE. DAMAGED PLANT MATERIAL SHALL BE REPLACED WITH SIMILAR VARIETIES AND SIZES IF DAMAGED, DESTROYED, OR LOST.
- IT IS THE RESPONSIBILITY OF THE CONTRACTOR TO ADVISE THE LANDSCAPE ARCHITECT OF ANY CONDITION FOUND ON THE SITE WHICH PROHIBITS INSTALLATION AS SHOWN ON THE DRAWINGS.
- ALL SHRUB & GROUND COVER BEDS SHALL HAVE A 2" THICK SHREDDED HARDWOOD MULCH LAYER, UNLESS OTHERWISE NOTED. FINISHED LEVEL OF MULCH TO SIT 1" BELOW ADJOINING FINISHED HARDSCAPE AND LAWN LEVEL.
- ALL PLANT MATERIAL SHALL BE MAINTAINED IN A HEALTHY AND VIGOROUS GROWING CONDITION, AND MUST BE REPLACED WITH PLANT MATERIAL OF SIMILAR VARIETY AND SIZE IF UNHEALTHY, DAMAGED, DESTROYED, OR OTHERWISE REMOVED.
- STRUCTURAL AND HARDSCAPE WORK SHALL BE INSTALLED PRIOR TO PLANTING INSTALLATION.
- LANDSCAPE AREAS SHALL BE KEPT FREE OF TRASH, LITTER AND WEEDS AT ALL TIMES DURING CONSTRUCTION.
- PLANT SPACING IS AS INDICATED ON THE 'PLANT SCHEDULE' UNLESS OTHERWISE NOTED. IT IS THE CONTRACTOR'S RESPONSIBILITY TO PROVIDE FULL COVERAGE IN ALL PLANTING AREAS AS SPECIFIED IN THE PLANT SCHEDULE. IT IS THE CONTRACTOR'S RESPONSIBILITY TO CONDUCT AN INDEPENDENT TAKE-OFF TO VERIFY SIZES AND QUANTITIES OF PLANT MATERIALS SHOWN.
- REFER TO PLANT SCHEDULE FOR ALL PLANTING TYPES, SIZES AND SPACING.
- AN AUTOMATIC IRRIGATION SYSTEM SHALL BE PROVIDED TO IRRIGATE ALL TURF AND LANDSCAPE BED AREAS AND SHALL BE OPERATIONAL AT THE TIME OF PLANT MATERIAL INSTALLATION. OVERSPRAY ON STREETS AND WALKS IS PROHIBITED. ALL WORK ON THE IRRIGATION SYSTEM, INCLUSIVE OF HYDROSTATIC COVERAGE AND OPERATIONAL TESTS SHALL BE COMPLETED PRIOR TO PLANTING INSTALLATION.
- ALL TREES PLANTED NEAR CURBS SHALL BE PLACED AT LEAST 6' CLEAR FROM THE CURB FACE UNLESS OTHERWISE NOTED.

