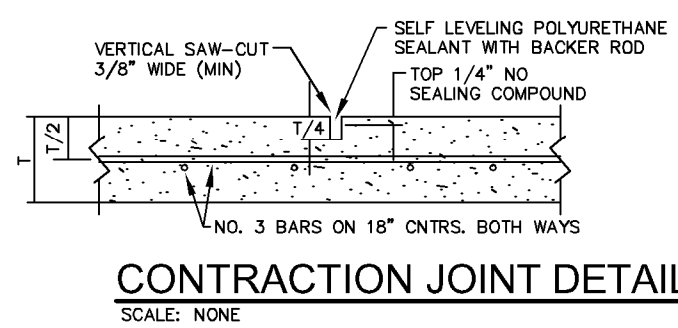
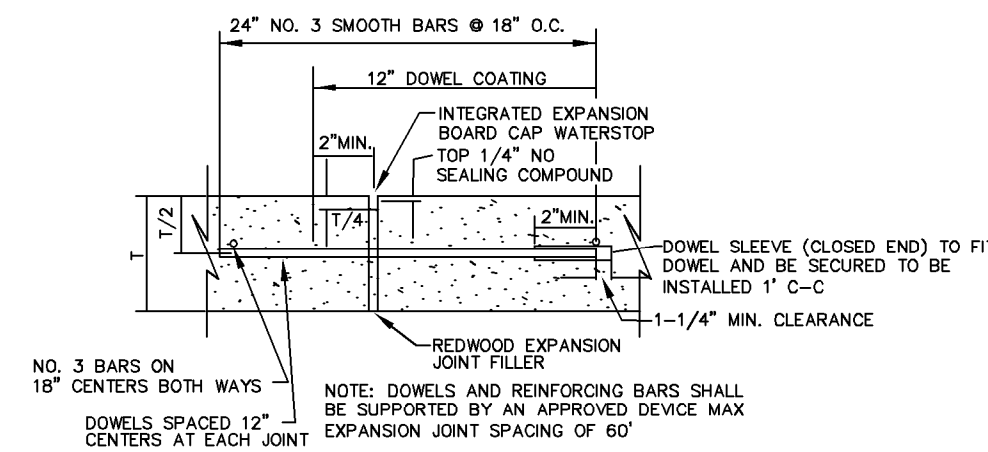


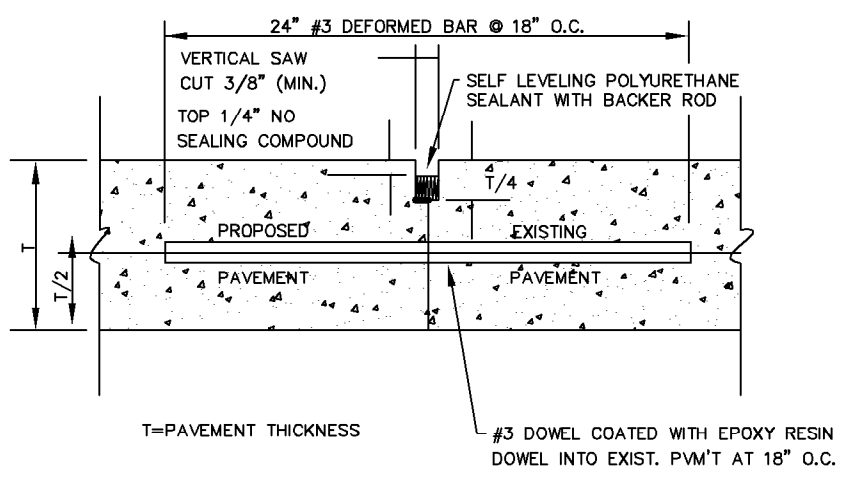
CONCRETE SIDEWALK DETAIL
SCALE: NONE



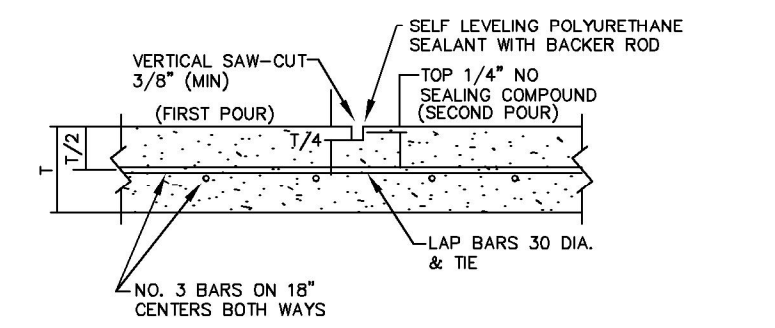
CONTRACTION JOINT DETAIL
SCALE: NONE



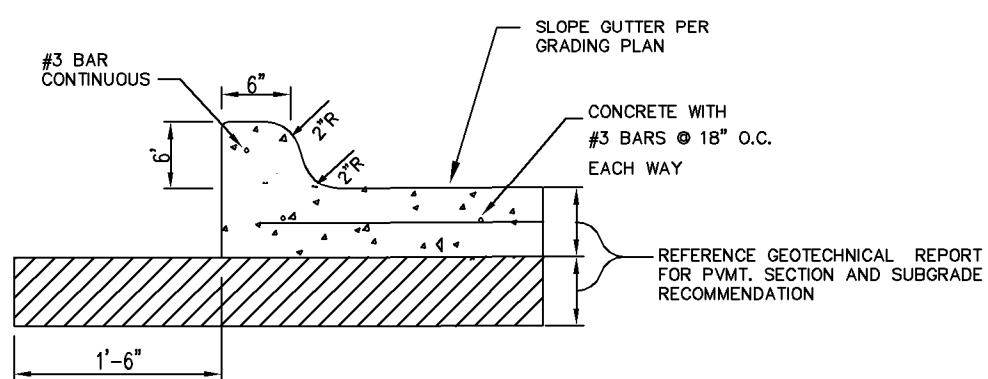
TRANSVERSE EXPANSION/ ISOLATION JOINT DETAIL
SCALE: NONE



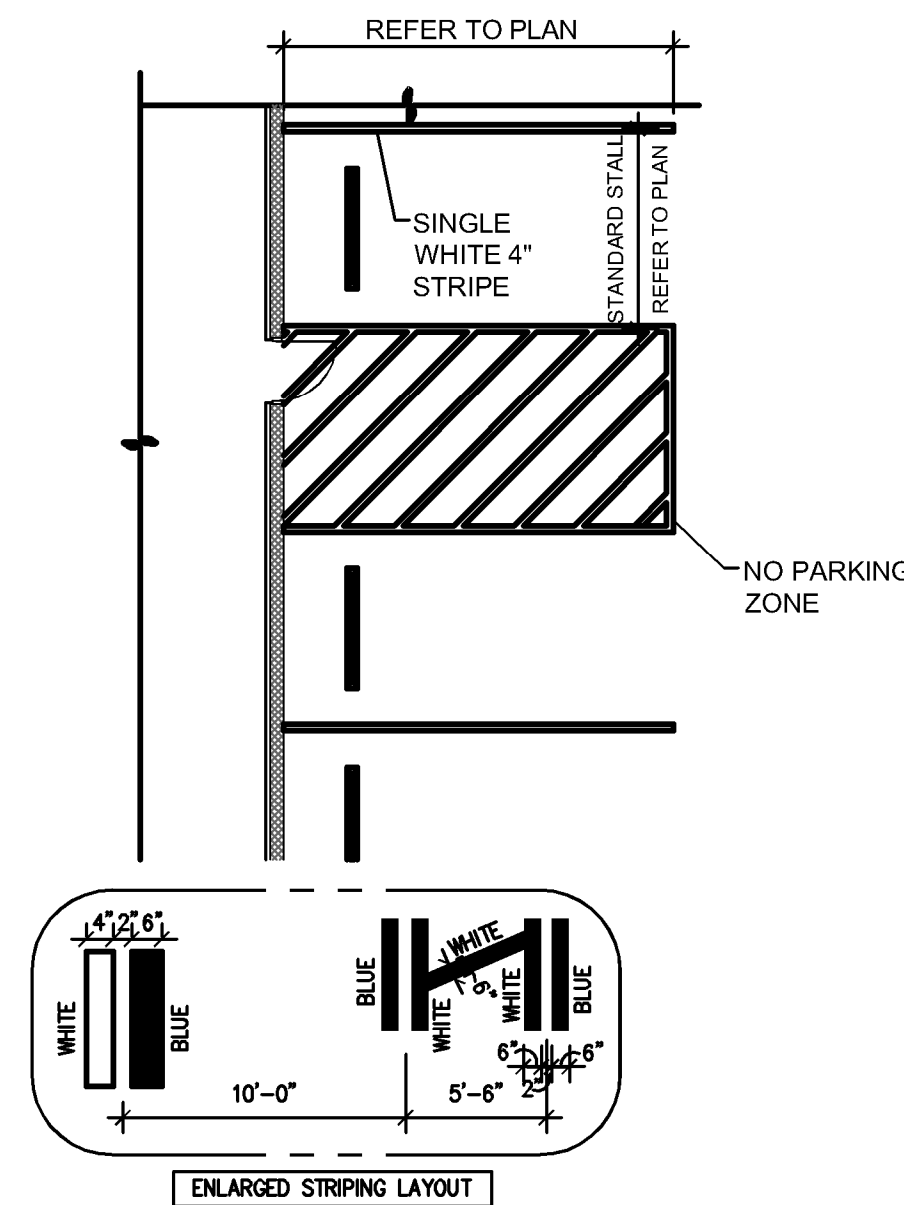
LONGITUDINAL BUTT JOINT DETAIL
SCALE: NONE



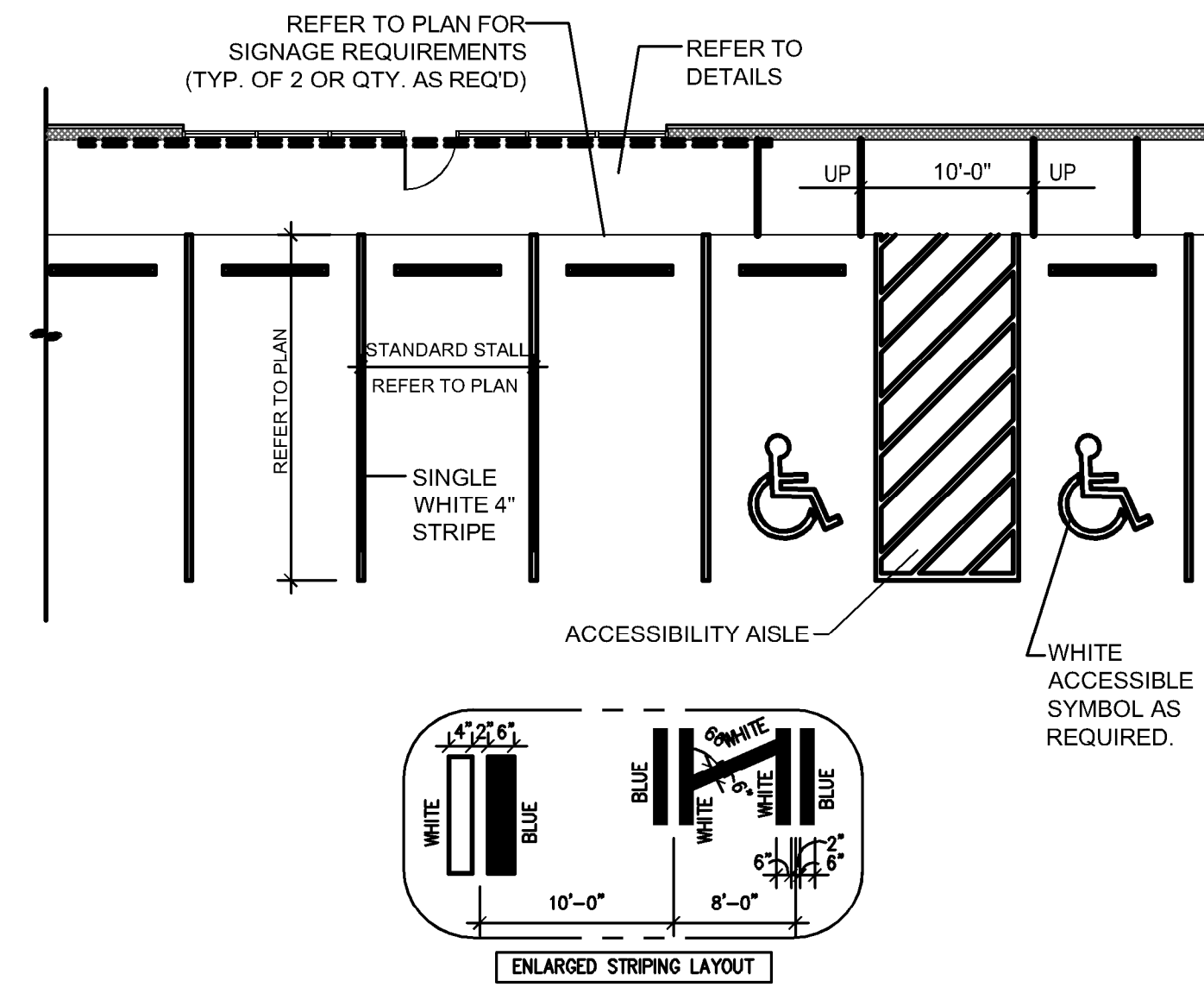
CONSTRUCTION JOINT DETAIL
SCALE: NONE



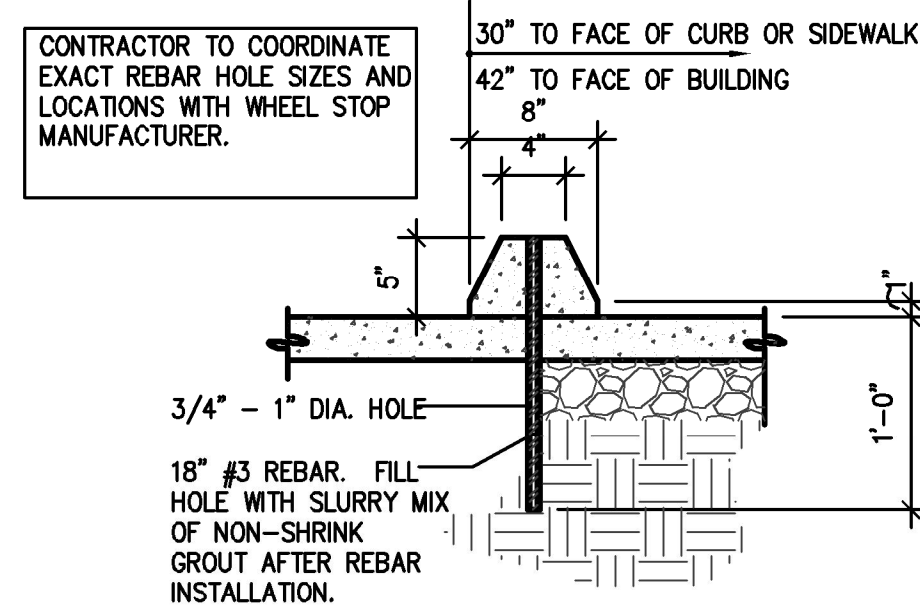
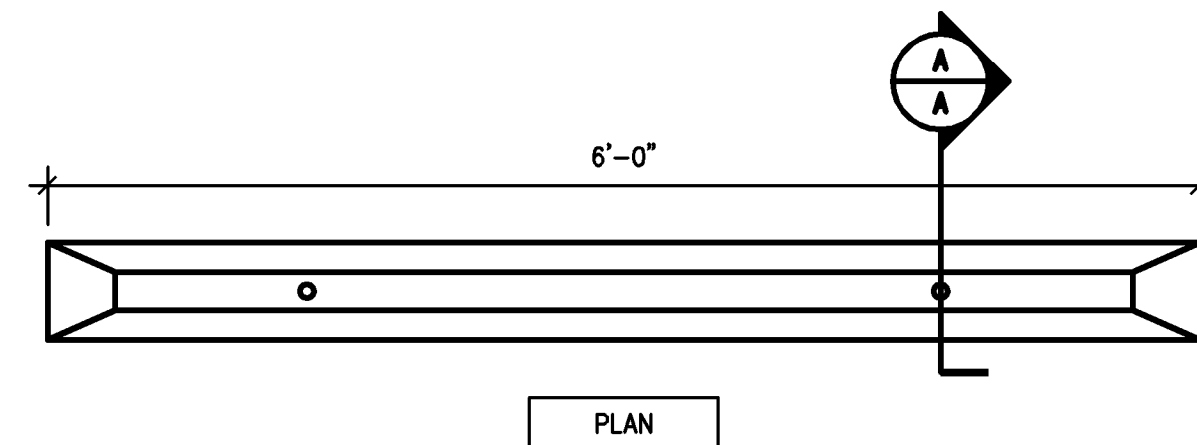
CONCRETE CURB AND GUTTER DETAIL
SCALE: NONE



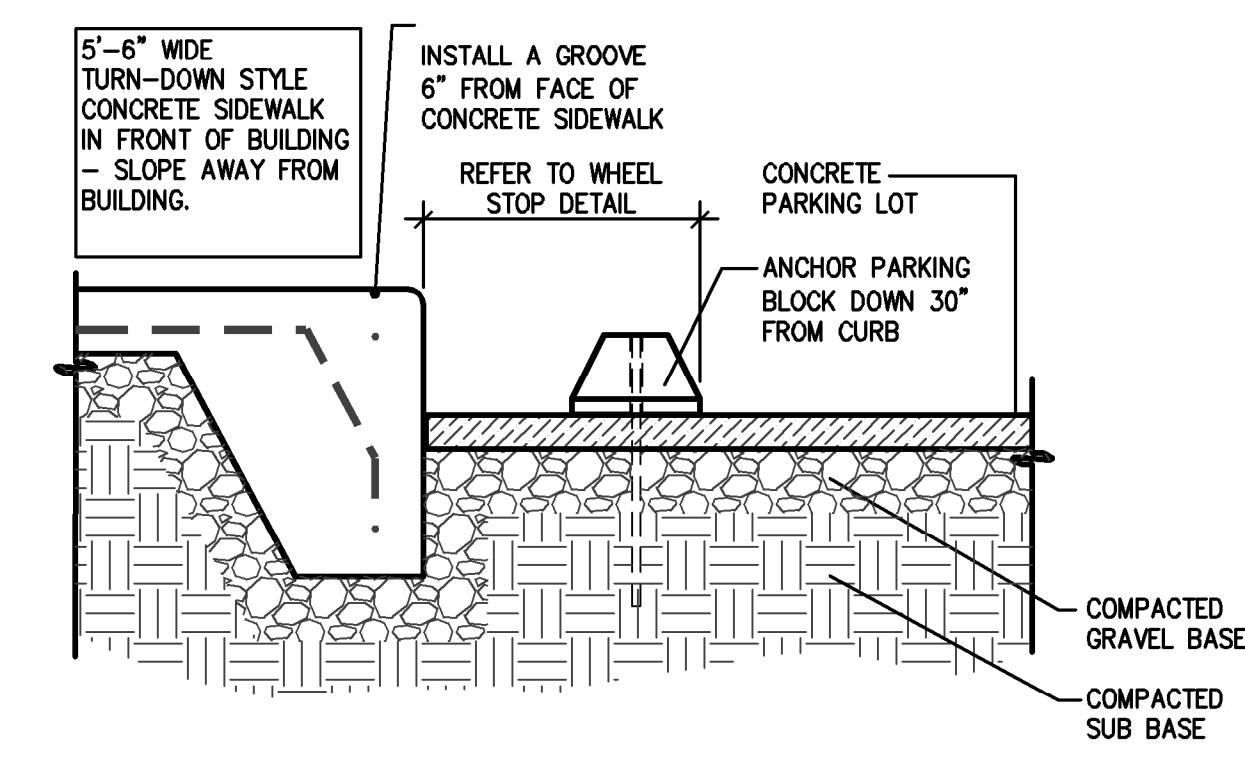
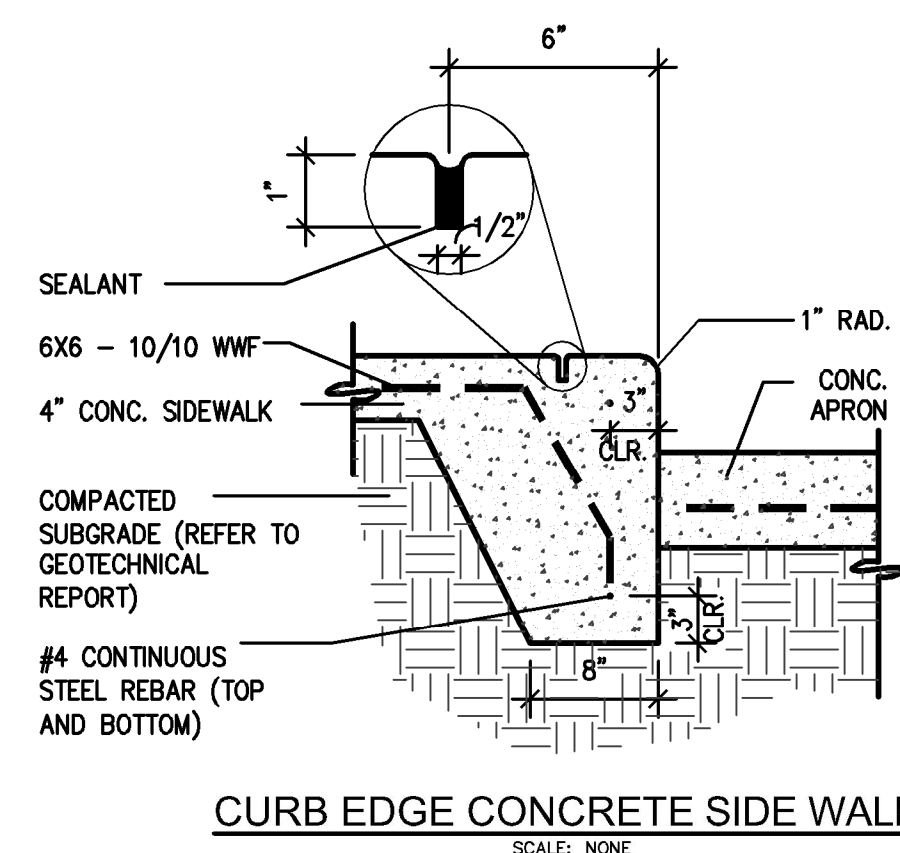
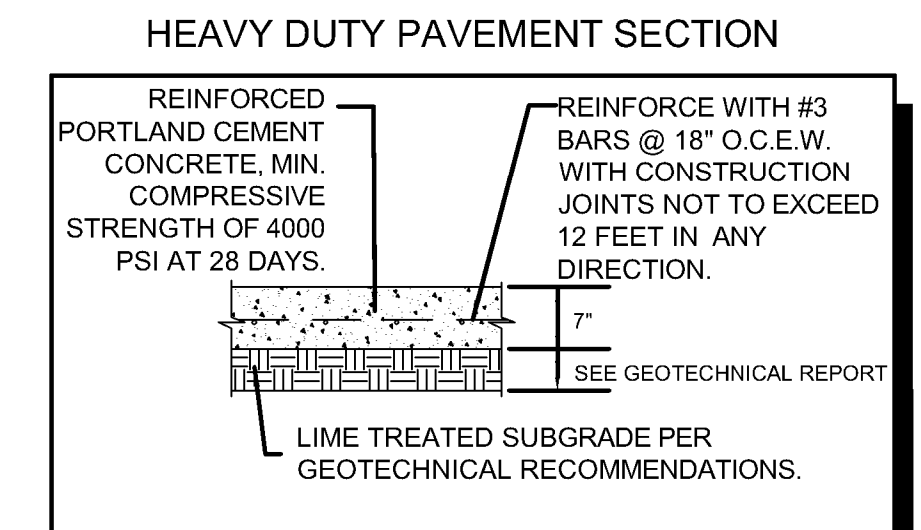
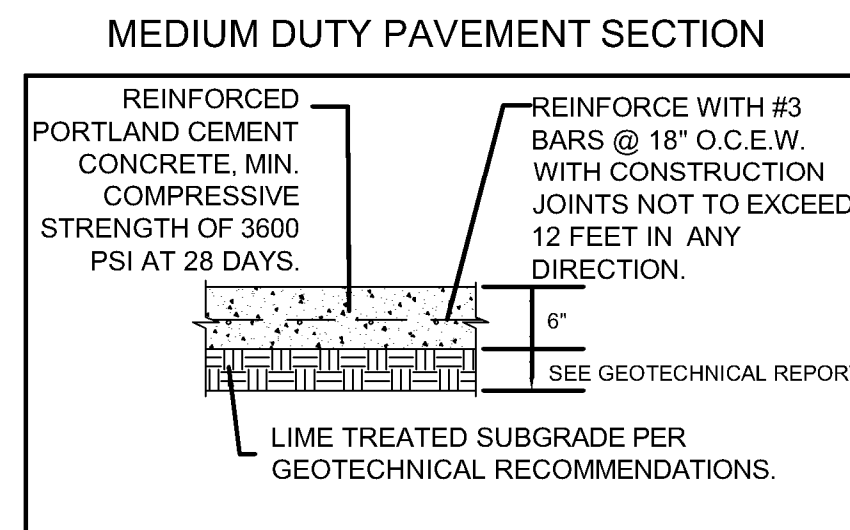
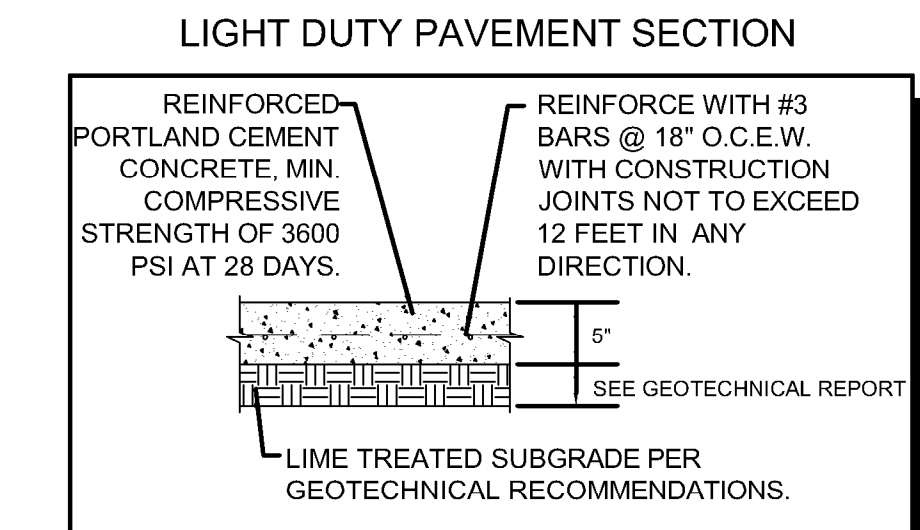
NO PARKING AREA STRIPING PLAN
N.T.S.



ACCESSIBLE STRIPING PLAN
N.T.S.



WHEEL STOP
SCALE: NONE



SIDEWALK DETAIL
SCALE: NONE

SITE ACCESSIBILITY DETAIL NOTES:

- REFER TO SITE PLAN FOR EXACT LOCATION OF ACCESSIBLE PARKING, WALKWAYS AND RAMPS.
- ALL WALKWAYS, RAMPS, AND ACCESSIBLE PARKING SIGNAGE, ETC. SHALL MEET THE 2012 TEXAS ACCESS STANDARDS AND LOCAL ACCESSIBILITY CODE.
- ONE OUT OF EVERY EIGHT (8) ACCESSIBLE PARKING SPACES, BUT NOT LESS THAN ONE, IS REQUIRED TO BE VAN ACCESSIBLE.
- ACCESSIBLE RAMPS
 - ALL CONCRETE ACCESSIBLE RAMPS (3000 PSI) SURFACES SHALL HAVE A 'WARNING SURFACE TILE' WITH SCREW DOWN TRUNCATED DOMES PER ADA STANDARDS AND LOCAL ACCESSIBILITY CODE(S).
 - RAMPS ARE TO BE COLOR IMPREGNATED TO PROVIDE VISUAL CONTRAST (DARK TO LIGHT) WITH ADJACENT CONCRETE SURFACES (MIN. 70% COLOR CONTRAST)
- FINISHED GRADES OF PAVEMENT IN ACCESSIBLE PARKING AND ACCESSIBILITY AISLE SHALL NOT EXCEED 1:50 SLOPE IN ANY DIRECTION.

NOT FOR REGULATORY APPROVAL, PERMITTING, OR CONSTRUCTION

ENGINEER OF RECORD:
ANNA C. BLACKWELL
TX. REG. NO. 97350
01 DECEMBER 2017

DRAWINGS, SPECIFICATIONS AND OTHER DOCUMENTS, PREPARED BY CARRILLO ENGINEERING, LLC ARE INSTRUMENTS OF SERVICE FOR USE SOLELY WITH RESPECT TO THIS PROJECT. THIS INCLUDES DOCUMENTS IN ELECTRONIC FORM. CARRILLO ENGINEERING, LLC SHALL BE DEEMED THE AUTHOR AND OWNERS OF THEIR RESPECTIVE INSTRUMENTS OF SERVICE AND SHALL RETAIN ALL COMMON LAW, STATUTORY AND OTHER RESERVED RIGHTS, INCLUDING COPYRIGHTS. THE INSTRUMENTS OF SERVICE SHALL NOT BE USED BY THE OWNER FOR FUTURE ACTIONS OR ALTERATIONS TO THIS PROJECT OR FOR OTHER PROJECTS, WITHOUT THE PRIOR WRITTEN AGREEMENT OF CARRILLO ENGINEERING, LLC. ANY UNAUTHORIZED USE OF THE INSTRUMENTS OF SERVICE SHALL BE WITHOUT LIABILITY TO CARRILLO ENGINEERING, LLC AND ITS CONSULTANTS.

Revision Schedule		
Rev. #	Revision Description	Revision Date



Carrillo Engineering, LLC

301 Commerce Street, Ste 1410 - Fort Worth, Texas 76102
Phone 817-896-0976 - Firm Registration #F-15893

TEXAS GUN EXPERIENCE

1901 SOUTH MAIN STREET
GRAPEVINE, TEXAS 76051

2016-028-00
DECEMBER 01, 2017

CONSTRUCTION DETAILS
C6.00