

CODE ANALYSIS

APPLICABLE CODES

2006 INTERNATIONAL BUILDING CODE
2006 INTERNATIONAL PLUMBING CODE
2006 INTERNATIONAL MECHANICAL CODE
2017 NATIONAL ELECTRIC CODE
2015 INTERNATIONAL ENERGY CONSERVATION CODE
2015 INTERNATIONAL FIRE CODE
2010 AMERICAN WITH DISABILITIES ACT
2012 TEXAS ACCESSIBILITY STANDARDS

BUILDING INFORMATION

THIS PROJECT IS A NEW GROUND FLOOR + MEZZANINE SHOOTING RANGE, RETAIL SPACE, AND OFFICES FOR TEXAS GUN EXPERIENCE. OVERALL BUILDING AREA = 34,566 SF.

TEXAS GUN EXPERIENCE BUILDING CONSTRUCTION

- CONCRETE SLAB ON GRADE
- STEEL FRAME, REF. STRUCTURAL
- STEEL JOIST AND METAL DECK ROOFING STRUCTURE, REF. STRUCTURAL
- METAL STUD WALL ASSEMBLY
- CONCRETE TILT WALL, REF. STRUCTURAL
- CONCRETE TILT SLAB ROOF STRUCTURE
- TPO MEMBRANE ROOF

CONSTRUCTION TYPE

- NEW CONSTRUCTION
- TYPE I-B, BUILDING ELEMENTS NOT REQUIRED TO BE FIRE-RATED
- FULLY SPRINKLERED BUILDING

ZONING

CURRENT LAND ZONING

- "C-C" -- "COMMUNITY COMMERCIAL DISTRICT"

1. ANY USE PERMITTED IN A "P-O" "PROFESSIONAL OFFICE DISTRICT" OR "C-N" "NEIGHBORHOOD COMMERCIAL DISTRICT" EXCEPT THAT THERE SHALL BE NO LIMITATION ON SIZE OF PLANNED SHOPPING CENTERS OR TOTAL FLOOR AREA.

4. COMMERCIAL AMUSEMENTS, THE OPERATION OF WHICH IS TOTALLY WITHIN AN ENCLOSED BUILDING, INCLUDING BOWLING ALLEYS, VIDEO ARCADES, ROLLER SKATING AND ICE SKATING ARENAS, MOTION PICTURE THEATERS, BUT EXCLUDING BILLIARD PARLORS AND ARCADES.

2015 INTERNATIONAL BUILDING CODE

CHAPTER 3 - USE AND OCCUPANCY CLASSIFICATION

SECTION 302 CLASSIFICATION

302.1 GENERAL

- THE BUILDING IS CLASSIFIED WITH RESPECT TO OCCUPANCY IN ONE OR MORE OF THE GROUPS LISTED.

- BUILDINGS WITH MULTIPLE OCCUPANCIES ARE TO COMPLY WITH SECTION 508.

- MIXED OCCUPANCY; NON SEPARATED OCCUPANCIES (SECTION 508.3)

1. ASSEMBLY, GROUP A-2, A-3 (SECTION 303).
2. BUSINESS GROUP B. (SECTION 304.1).
3. MERCANTILE GROUP M. (SECTION 309).
4. STORAGE GROUP S. (SECTION 311).

SECTION 303 ASSEMBLY GROUP A

303.1 ASSEMBLY GROUP A

303.1.1 SMALL BUILDINGS AND TENANT SPACES.

- A BUILDING OR TENANT SPACE USED FOR ASSEMBLY PURPOSES WITH AN OCCUPANT LOAD OF LESS THAN 50 PERSONS SHALL BE CLASSIFIED AS A GROUP B OCCUPANCY.

303.1.2 SMALL ASSEMBLY SPACES

- THE FOLLOWING ROOMS AND SPACES SHALL NOT BE CLASSIFIED AS ASSEMBLY OCCUPANCIES:

1. A ROOM OR SPACE USED FOR ASSEMBLY PURPOSES WITH AN OCCUPANT LOAD OF LESS THAN 50 PERSONS AND ACCESSORY TO ANOTHER OCCUPANCY SHALL BE CLASSIFIED AS A GROUP B OCCUPANCY OR AS PART OF THAT OCCUPANCY.

2. A ROOM OR SPACE USED FOR ASSEMBLY PURPOSES THAT IS LESS THAN 750 SQUARE FEET IN AREA AND ACCESSORY TO ANOTHER OCCUPANCY SHALL BE CLASSIFIED AS A GROUP B OCCUPANCY OR AS PART OF THAT OCCUPANCY.

CHAPTER 5 - GENERAL BUILDING HEIGHTS AND AREAS

SECTION 504 BUILDING HEIGHT AND NUMBER OF STORIES

504.2 MIXED OCCUPANCY.

- IN A BUILDING CONTAINING MIXED OCCUPANCIES IN ACCORDANCE WITH SECTION 508, NO INDIVIDUAL OCCUPANCY SHALL EXCEED THE HEIGHT AND NUMBER OF STORY LIMITS SPECIFIED IN THIS SECTION FOR THE APPLICABLE OCCUPANCIES.

504.3 HEIGHT IN FEET.

- ALLOWABLE BUILDING HEIGHT = 75 FEET (TABLE 504.3).

504.4 NUMBER OF STORIES.

- ALLOWABLE NUMBER OF STORIES = 3 STORIES (TABLE 504.4).

SECTION 505 MEZZANINES AND EQUIPMENT PLATFORMS

505.2 MEZZANINES.

- A MEZZANINE OR MEZZANINES IN COMPLIANCE WITH SECTION 505.2 SHALL BE CONSIDERED A PORTION OF THE STORY BELOW. SUCH MEZZANINES SHALL NOT CONTRIBUTE TO EITHER THE BUILDING AREA OR NUMBER OF STORIES AS REGULATED BY SECTION 503.1. THE AREA OF THE MEZZANINE SHALL BE INCLUDED IN DETERMINING THE FIRE AREA. THE CLEAR HEIGHT ABOVE AND BELOW THE MEZZANINE FLOOR CONSTRUCTION SHALL BE NOT LESS THAN 7 FEET.

505.2.1 AREA LIMITATION

- THE AGGREGATE AREA OF A MEZZANINE OR MEZZANINES WITHIN A ROOM SHALL NOT BE GREATER THAN ONE-THIRD OF THE FLOOR AREA OF THAT ROOM OR SPACE IN WHICH THEY ARE LOCATED. THE ENCLOSED PORTION OF A ROOM SHALL NOT BE INCLUDED IN A DETERMINATION OF THE FLOOR AREA OF THE ROOM IN WHICH THE MEZZANINE IS LOCATED. IN DETERMINING THE ALLOWABLE MEZZANINE AREA, THE AREA OF THE MEZZANINE SHALL NOT BE INCLUDED IN THE FLOOR AREA.

EXCEPTIONS:

2. THE AGGREGATE AREA OF MEZZANINES IN BUILDINGS AND STRUCTURES OF TYPE I OR II CONSTRUCTION SHALL NOT BE GREATER THAN ONE-HALF OF THE FLOOR AREA OF THE ROOM IN BUILDINGS AND STRUCTURES EQUIPPED THROUGHOUT WITH AN APPROVED AUTOMATIC SPRINKLER SYSTEM IN ACCORDANCE WITH SECTION 903.3.1.1 AND AN APPROVED EMERGENCY VOICE/ALARM COMMUNICATION SYSTEM IN ACCORDANCE WITH SECTION 907.5.2.

505.2.2 MEANS OF EGRESS.

- THE MEANS OF EGRESS FOR MEZZANINES SHALL COMPLY WITH THE APPLICABLE PROVISIONS OF CHAPTER 10.

505.2.3 OPENNESS.

- A MEZZANINE SHALL BE OPEN AND UNOBSTRUCTED TO THE ROOM IN WHICH SUCH MEZZANINE IS LOCATED EXCEPT FOR WALLS NOT MORE THAN 42 INCHES IN HEIGHT, COLUMNS, AND POSTS.

EXCEPTIONS:

2. A MEZZANINE HAVING TWO OR MORE EXITS OR ACCESS TO EXITS IS NOT REQUIRED TO BE OPEN TO THE ROOM IN WHICH THE MEZZANINE IS LOCATED.

SECTION 506 BUILDING AREA

506.2.2 MIXED OCCUPANCY, ONE-STORY BUILDINGS.

- THE ALLOWABLE AREA OF A MIXED-OCCUPANCY BUILDING WITH NO MORE THAN ONE STORY ABOVE GRADE PLANE SHALL BE DETERMINED IN ACCORDANCE WITH THE APPLICABLE PROVISIONS OF SECTION 508.1 BASED ON EQUATION 5-1 FOR EACH APPLICABLE OCCUPANCY.

- ALLOWABLE BUILDING AREA = 44,650 SF

506.2.2 MIXED OCCUPANCY, ONE-STORY BUILDINGS.

- THE ALLOWABLE AREA OF A MIXED-OCCUPANCY BUILDING WITH NO MORE THAN ONE STORY ABOVE GRADE PLANE SHALL BE DETERMINED IN ACCORDANCE WITH THE APPLICABLE PROVISIONS OF SECTION 508.1 BASED ON EQUATION 5-1 FOR EACH APPLICABLE OCCUPANCY.

$$A_a = A_T + (NS \times I_e) \quad (\text{EQUATION 5-1})$$

WHERE:

A_a = ALLOWABLE AREA (SQUARE FEET)
A_T = TABULAR ALLOWABLE AREA FACTOR (TABLE 506.2)
NS = TABULAR ALLOWABLE AREA FACTOR IN ACCORDANCE WITH TABLE 506.2 FOR NONSPRINKLERED BUILDING (REGARDLESS OF WHETHER THE BUILDING IS SPRINKLERED).

I_e = AREA FACTOR INCREASE DUE TO FRONTAGE (PERCENT) AS CALCULATED IN ACCORDANCE WITH SECTION 506.3.

$$A_a = A_T + (NS \times I_e)$$
$$A_a = 38,000 + (9,500 \times 0.70)$$
$$A_a = 38,000 + (6,650) = 44,650 \text{ SF}$$

506.3.2 MINIMUM FRONTAGE DISTANCE

- TO QUALIFY FOR AN AREA FACTOR INCREASE BASED ON FRONTAGE, THE PUBLIC WAY OR OPEN SPACE ADJACENT TO THE BUILDING PERIMETER SHALL HAVE A MINIMUM DISTANCE (W) OF 20 FEET MEASURED AT RIGHT ANGLES FROM THE BUILDING FACE TO ANY OF THE FOLLOWING:

1. THE CLOSEST INTERIOR LOT LINE.
2. THE ENTIRE WIDTH OF A STREET, ALLEY, OR PUBLIC WAY.
3. THE EXTERIOR FACE OF AN ADJACENT BUILDING ON THE SAME PROPERTY.

WHERE THE VALUE OF W IS GREATER THAN 30 FEET, A VALUE OF 30 FEET SHALL BE USED IN CALCULATING THE BUILDING AREA INCREASE BASED ON FRONTAGE, REGARDLESS OF THE ACTUAL WIDTH OF THE PUBLIC WAY OR OPEN SPACE.

WHERE THE VALUE OF W VARIES ALONG THE PERIMETER OF THE BUILDING, THE CALCULATION PERFORMED IN ACCORDANCE WITH EQUATION 5-5 SHALL BE BASED ON THE WEIGHTED AVERAGE CALCULATED IN ACCORDANCE WITH EQUATION 5-4.

$$W = (L_1 \times w_1 + L_2 \times w_2 + L_3 \times w_3) / F \quad (\text{EQUATION 5-4})$$

WHERE:

W = (WIDTH: WEIGHTED AVERAGE) = CALCULATED WIDTH OF PUBLIC WAY OR OPEN SPACE (FEET)

L_n = LENGTH OF A PORTION OF THE EXTERIOR PERIMETER WALL.

W_n = WIDTH OF A PUBLIC WAY OR OPEN SPACE ASSOCIATED WITH THAT PORTION OF THE EXTERIOR PERIMETER WALL.

F = BUILDING PERIMETER THAT FRONTS ON A PUBLIC WAY OR OPEN SPACE HAVING A WIDTH OF 20 FEET OR MORE.

$$W = (L_1 \times w_1 + L_2 \times w_2 + L_3 \times w_3) / F$$
$$W = (289.5 \times 30 + 135.5 \times 30 + 171 \times 30 + 75.5 \times 30 + 135 \times 30) / 805.5$$
$$W = (24,165) / 805.5 = 30$$

506.3.3 AMOUNT OF INCREASE.

- THE AREA FACTOR INCREASE BASED ON FRONTAGE SHALL BE DETERMINED IN ACCORDANCE WITH EQUATION 5-5.

$$I_e = [F/P - 0.25] W/30 \quad (\text{EQUATION 5-5})$$

WHERE:

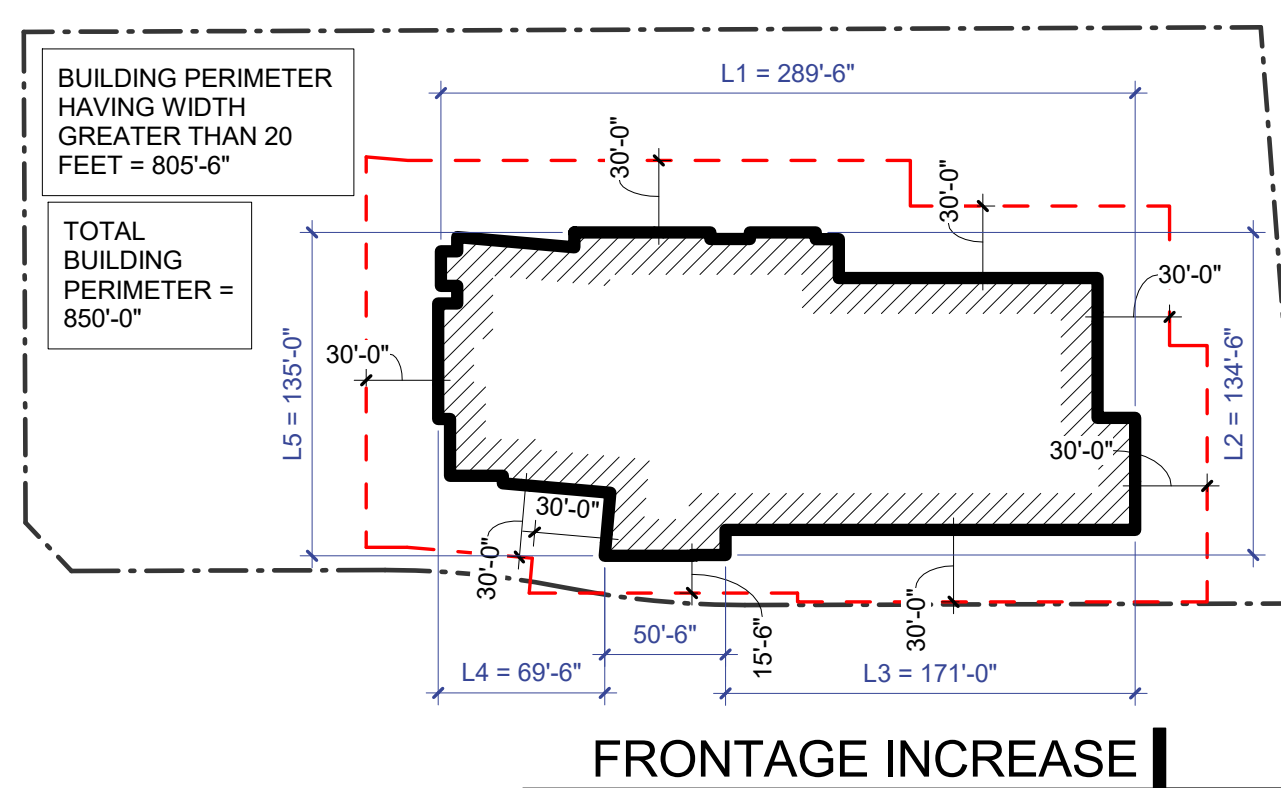
I_e = AREA FACTOR INCREASE DUE TO FRONTAGE.

F = BUILDING PERIMETER THAT FRONTS ON A PUBLIC WAY OR OPEN SPACE HAVING MINIMUM DISTANCE OF 20 FEET.

P = PERIMETER OF ENTIRE BUILDING (FEET).

W = WIDTH OF PUBLIC WAY OR OPEN SPACE (FEET) IN ACCORDANCE WITH SECTION 506.3.2.

$$I_e = [F/P - 0.25] W/30$$
$$I_e = [805.5 / 850 - 0.25] 30/30$$
$$I_e = [0.69764706] 1 = 0.70$$



SECTION 508 MIXED USE AND OCCUPANCY

508.3 NONSEPARATED OCCUPANCIES.

- BUILDINGS OR PORTIONS OF BUILDINGS THAT COMPLY WITH THE PROVISIONS OF THIS SECTION SHALL BE CONSIDERED AS NONSEPARATED OCCUPANCIES.

508.3.1 OCCUPANCY CLASSIFICATION.

- NONSEPARATED OCCUPANCIES SHALL BE INDIVIDUALLY CLASSIFIED IN ACCORDANCE WITH SECTION 302.1. THE REQUIREMENTS OF THIS CODE SHALL APPLY TO EACH PORTION OF THE BUILDING BASED ON THE OCCUPANCY CLASSIFICATION OF THAT SPACE. IN ADDITION, THE MOST RESTRICTIVE PROVISIONS OF CHAPTER 9 THAT SHALL APPLY TO THE NONSEPARATED OCCUPANCIES SHALL APPLY TO THE TOTAL NONSEPARATED OCCUPANCY AREA.

508.3.2 ALLOWABLE BUILDING AREA AND HEIGHT.

- THE ALLOWABLE BUILDING AREA AND HEIGHT OF THE BUILDING OR PORTION THEREOF SHALL BE BASED ON THE MOST RESTRICTIVE ALLOWANCES FOR THE OCCUPANCY GROUPS UNDER CONSIDERATION FOR THE TYPE OF CONSTRUCTION OF THE BUILDING IN ACCORDANCE WITH SECTION 903.1.

508.3.3 SEPARATION.

- NO SEPARATION IS REQUIRED BETWEEN NONSEPARATED OCCUPANCIES.

CHAPTER 6 - TYPES OF CONSTRUCTION

SECTION 601 - GENERAL

- TYPE I-B CONSTRUCTION - BUILDING ELEMENTS NOT REQUIRED TO BE FIRE-RATED (TABLE 601).

CHAPTER 10 - MEANS OF EGRESS

SECTION 1004 OCCUPANT LOAD

1004.1.1.2 ADJACENT LEVELS FOR MEZZANINES.

- THE NUMBER OF THE OCCUPANT LOAD OF A MEZZANINE WITH REQUIRED EGRESS THROUGH A ROOM, AREA, OR SPACE ON AN ADJACENT LEVEL SHALL BE ADDED TO THE OCCUPANT LOAD OF THAT ROOM, AREA, OR SPACE.

1004.1.2 AREAS WITHOUT FIXED SEATING.

- THE NUMBER OF OCCUPANTS SHALL BE COMPUTED AT THE RATE OF ONE OCCUPANT PER UNIT OF AREA AS PRESCRIBED IN TABLE 1004.1.2. FOR AREAS WITHOUT FIXED SEATING, THE OCCUPANT LOAD SHALL BE NOT LESS THAN THAT NUMBER DETERMINED BY DIVIDING THE FLOOR AREA UNDER CONSIDERATION BY THE OCCUPANT LOAD FACTOR ASSIGNED TO THE FUNCTION OF THE SPACE AS SET FORTH IN TABLE 1004.1.2. WHERE AN INTENDED FUNCTION IS NOT LISTED IN TABLE 1004.1.2, THE BUILDING OFFICIAL SHALL ESTABLISH A FUNCTION BASED ON A LISTED FUNCTION THAT MOST NEARLY RESEMBLES THE INTENDED FUNCTION.

EXCEPTION: WHERE APPROVED BY THE BUILDING OFFICIAL, THE ACTUAL NUMBER OF OCCUPANTS FOR WHOM EACH OCCUPANT LOAD SPACE, FLOOR OR BUILDING IS DESIGNED, ALTHOUGH LESS THAN THOSE DETERMINED BY CALCULATION, SHALL BE PERMITTED TO BE USED IN THE DETERMINATION OF THE DESIGN OCCUPANT LOAD.

EXCEPTION: WHERE APPROVED BY THE BUILDING OFFICIAL, THE ACTUAL NUMBER OF OCCUPANTS FOR WHOM EACH OCCUPANT LOAD SPACE, FLOOR OR BUILDING IS DESIGNED, ALTHOUGH LESS THAN THOSE DETERMINED BY CALCULATION, SHALL BE PERMITTED TO BE USED IN THE DETERMINATION OF THE DESIGN OCCUPANT LOAD.

TABLE 1004.1.2 MAXIMUM FLOOR AREA ALLOWANCES PER OCCUPANT.

FUNCTION OF SPACE:

FUNCTION OF SPACE:	OCCUPANT LOAD FACTOR:
- ACCESSORY STORAGE AREAS,	
- MECHANICAL EQUIPMENT ROOM	300 SF GROSS
- ASSEMBLY (UNCONCENTRATED)	15 SF NET
- BUSINESS AREAS	100 SF GROSS
- GUN RANGE	4 OCCUPANTS MAX. PER LANE***
- MERCANTILE	60 SF GROSS

*** TGE POLICY - 4 OCCUPANTS MAX. PER SHOOTING LANE

- STORAGE TOTAL	12 OCCUPANTS
- ASSEMBLY TOTAL	140 OCCUPANTS
- BUSINESS TOTAL	51 OCCUPANTS
- GUN RANGE TOTAL	112 OCCUPANTS
- MERCANTILE TOTAL	222 OCCUPANTS

BUILDING TOTAL = 537 OCCUPANTS

SECTION 1005 MEANS OF EGRESS SIZING.

1005.3.1 STAIRWAYS.

- THE CAPACITY, IN INCHES, OF MEANS OF EGRESS STAIRWAYS SHALL BE CALCULATED BY MULTIPLYING THE OCCUPANT LOAD SERVED BY SUCH STAIRWAYS BY A MEANS OF EGRESS CAPACITY FACTOR OF 0.3 INCHES PER OCCUPANT.

EXCEPTION: 0.2 INCHES PER OCCUPANT IN FULLY SPRINKLERED BUILDINGS.

MEZZANINE TOTAL = 29 OCCUPANTS

29 OCCUPANTS x 0.2 INCHES = 5.8" REQUIRED AT STAIR

1005.3.2 OTHER EGRESS COMPONENTS.

- THE CAPACITY, IN INCHES, OF MEANS OF EGRESS COMPONENTS OTHER THAN STAIRWAYS SHALL BE CALCULATED BY MULTIPLYING THE OCCUPANT LOAD SERVED BY SUCH COMPONENT BY MEANS OF EGRESS CAPACITY FACTOR OF 0.2 INCHES PER OCCUPANT.

EXCEPTION: 0.15 INCHES PER OCCUPANT IN FULLY SPRINKLERED BUILDINGS.

537 OCCUPANTS x 0.15 INCHES = 80.55 INCHES REQUIRED

WIDTH PROVIDED = 324 INCHES

SECTION 1006 NUMBER OF EXITS AND EXIT ACCESS DOORWAYS

1006.2.1 EGRESS BASED ON OCCUPANT LOAD AND COMMON PATH OF EGRESS TRAVEL DISTANCE.

- TWO EXITS OR EXIT ACCESS DOORWAYS FROM ANY SPACE SHALL BE PROVIDED WHERE THE DESIGN OCCUPANT LOAD OR THE COMMON PATH OF EGRESS TRAVEL DISTANCE EXCEEDS THE VALUES LISTED IN TABLE 1006.2.1.

TABLE 1006.2.1 SPACES WITH ONE EXIT OR EXIT ACCESS DOORWAY.

- OCCUPANCY B, MAXIMUM OCCUPANT LOAD OF SPACE = 49, MAXIMUM PATH OF EGRESS TRAVEL DISTANCE = 100 FEET.

SECTION 1007 EXIT AND EXIT ACCESS DOORWAY CONFIGURATION

1007.1 GENERAL.

- EXITS, EXIT ACCESS DOORWAYS, AND EXIT ACCESS STAIRWAYS AND RAMPS SERVING SPACES, INCLUDING INDIVIDUAL BUILDING STORIES SHALL BE SEPARATED IN ACCORDANCE WITH THE PROVISIONS OF THIS SECTION.

1007.1.1 TWO EXITS OR EXIT ACCESS DOORWAYS.

- WHERE TWO EXITS, EXIT ACCESS DOORWAYS, EXIT ACCESS STAIRWAYS, OR RAMPS, OR ANY COMBINATION THEREOF, ARE REQUIRED FROM ANY PORTION OF THE EXIT ACCESS, THEY SHALL BE PLACED A DISTANCE APART EQUAL TO NOT LESS THAN ONE-HALF THE LENGTH OF THE MAXIMUM OVERALL DIMENSION OF THE BUILDING OR AREA TO BE SERVED MEASURED IN A STRAIGHT LINE BETWEEN THEM.

EXCEPTIONS:

2. WHERE A BUILDING IS EQUIPPED THROUGHOUT WITH AN AUTOMATIC SPRINKLER SYSTEM IN ACCORDANCE WITH SECTION 903.3.1.1 OR 903.1.2, THE SEPARATION DISTANCE SHALL BE NOT LESS THAN ONE-THIRD OF THE LENGTH OF THE MAXIMUM OVERALL DIAGONAL DIMENSION OF THE AREA SERVED.

SECTION 1009 ACCESSIBLE MEANS OF EGRESS.

1009.1 ACCESSIBLE MEANS OF EGRESS REQUIRED.

- ACCESSIBLE MEANS OF EGRESS SHALL COMPLY WITH THIS SECTION.

ACCESSIBLE SPACES SHALL BE PROVIDED WITH NOT LESS THAN ONE ACCESSIBLE MEANS OF EGRESS.

1009.3 STAIRWAYS.

- IN ORDER TO BE CONSIDERED PART OF AN ACCESSIBLE MEANS OF EGRESS, A STAIRWAY BETWEEN STORIES SHALL HAVE A CLEAR WIDTH OF 48 INCHES MINIMUM BETWEEN HANDRAILS AND SHALL EITHER INCORPORATE AN AREA OF REFUGE WITHIN AN ENLARGED FLOOR-LEVEL LANDING OR SHALL BE ACCESSED FROM AN AREA OF REFUGE COMPLYING WITH SECTION 1009.6.

EXCEPTIONS:

1. EXIT ACCESS STAIRWAYS PROVIDING MEANS OF EGRESS FROM MEZZANINES ARE PERMITTED AS PART OF AN ACCESSIBLE MEANS OF EGRESS.

2. THE CLEAR WIDTH OF 48 INCHES BETWEEN HANDRAILS IS NOT REQUIRED IN BUILDINGS EQUIPPED THROUGHOUT WITH AN AUTOMATIC SPRINKLER SYSTEM INSTALLED IN ACCORDANCE WITH SECTION 903.1.1 OR 903.1.2.

SECTION 1017 EXIT ACCESS TRAVEL DISTANCE.

1017.2 LIMITATIONS.

- EXIT ACCESS TRAVEL DISTANCE SHALL NOT EXCEED THE VALUES GIVEN IN TABLE 1017.2.

TABLE 1017.2 EXIT ACCESS TRAVEL DISTANCE.

- OCCUPANCY A (MOST RESTRICTIVE), WITH SPRINKLER SYSTEM = 250 FEET.

NOT FOR REGULATORY APPROVAL, PERMITTING, OR CONSTRUCTION

JIM THARP

01 DECEMBER 2017

DRAWINGS, SPECIFICATIONS AND OTHER DOCUMENTS, PREPARED BY OWEY WILLIAMS THARP ARCHITECTS, PLLC ARE INSTRUMENTS OF SERVICE FOR USE SOLELY WITH RESPECT TO THIS PROJECT. THIS INCLUDES DOCUMENTS IN ELECTRONIC FORM AND SHALL REMAIN THE PROPERTY OF OWEY WILLIAMS THARP ARCHITECTS, PLLC. ANY UNAUTHORIZED USE OF THE INSTRUMENTS OF SERVICE SHALL BE WITHOUT LIABILITY TO OWEY WILLIAMS THARP ARCHITECTS, PLLC AND ITS CONSULTANTS.

Revision Schedule

Rev. #	Revision Description	Revision Date

CHAPTER 11 - ACCESSIBILITY

SECTION 1104 - ACCESSIBLE ROUTE

1104.3 CONNECTED SPACES.

- WHEN A BUILDING OR PORTION OF A BUILDING IS REQUIRED TO BE ACCESSIBLE, AT LEAST ONE ACCESSIBLE ROUTE SHALL BE PROVIDED TO EACH PORTION OF THE BUILDING, TO ACCESSIBLE BUILDING ENTRANCES CONNECTING ACCESSIBLE PEDESTRIAN WALKWAYS AND TO THE PUBLIC WAY.

EXCEPTIONS:

1. STORIES AND MEZZANINES EXEMPTED BY SECTION 1104.4.

1104.4 MULTISTORY BUILDINGS AND FACILITIES.

- AT LEAST ONE ACCESSIBLE ROUTE SHALL CONNECT EACH ACCESSIBLE STORY AND MEZZANINE IN MULTILEVEL BUILDINGS AND FACILITIES.

EXCEPTIONS:

1. AN ACCESSIBLE ROUTE IS NOT REQUIRED TO STORIES AND MEZZANINES THAT HAVE AN AGGREGATE AREA OF NOT MORE THAN 3,000 SQUARE FEET AND ARE LOCATED ABOVE AND BELOW ACCESSIBLE LEVELS.

2. STORIES OR MEZZANINES THAT DO NOT CONTAIN ACCESSIBLE ELEMENTS OR OTHER SPACES AS DETERMINED BY SECTION 1107 OR 1108 ARE NOT REQUIRED TO BE SERVED BY AN ACCESSIBLE ROUTE FROM AN ACCESSIBLE LEVEL.

CHAPTER 29 - PLUMBING SYSTEMS

SECTION 2902 - MINIMUM PLUMBING FACILITIES

TABLE 2902.1 MINIMUM NUMBER OF REQUIRED PLUMBING FIXTURES.

2902.1.1 FIXTURE CALCULATIONS.

- TO DETERMINE THE OCCUPANT LOAD OF EACH SEX, THE TOTAL OCCUPANT LOAD SHALL BE DIVIDED IN HALF. TO DETERMINE THE REQUIRED NUMBER OF FIXTURES, THE FIXTURE RATIO OR RATIOS FOR EACH FIXTURE TYPE SHALL BE APPLIED TO THE OCCUPANT LOAD OF EACH SEX IN ACCORDANCE WITH TABLE 2902.1. FRACTIONAL NUMBERS RESULTING FROM APPLYING THE FIXTURE RATIOS OF TABLE 2902.1 SHALL BE ROUNDED UP TO THE NEXT WHOLE NUMBER. FOR CALCULATIONS INVOLVING MULTIPLE OCCUPANCIES, SUCH FRACTIONAL NUMBERS FOR EACH OCCUPANCY SHALL FIRST BE SUMMED AND THEN ROUNDED UP TO THE NEXT WHOLE NUMBER.

FIXTURE TOTALS	FIXTURES	FIXTURES
- STORAGE TOTAL	12 OCCUPANTS	
WATER CLOSETS -- 1 PER 100	0.12 WATER CLOSETS	
LAVATORIES -- 1 PER 100	0.12 LAVATORIES	
DRINKING FOUNTAINS -- 1 PER 1,000	0.01 DRINKING FOUNTAINS	
- ASSEMBLY TOTAL	140 OCCUPANTS	
WATER CLOSETS -- 1 PER 40	3.50 WATER CLOSETS	
LAVATORIES -- 1 PER 75	1.87 LAVATORIES	
DRINKING FOUNTAINS -- 1 PER 500	0.28 DRINKING FOUNTAINS	
- BUSINESS TOTAL	51 OCCUPANTS	
WATER CLOSETS -- 1 PER 25	2.04 WATER CLOSETS	
LAVATORIES -- 1 PER 40	1.28 LAVATORIES	
DRINKING FOUNTAINS -- 1 PER 100	0.51 DRINKING FOUNTAINS	
- GUN RANGE TOTAL	112 OCCUPANTS	
WATER CLOSETS (M) -- 1 PER 125	0.90 WATER CLOSETS	
WATER CLOSETS (F) -- 1 PER 65	1.72 WATER CLOSETS	
LAVATORIES -- 1 PER 200	0.56 LAVATORIES	
DRINKING FOUNTAINS -- 1 PER 500	0.22 DRINKING FOUNTAINS	
- MERCANTILE TOTAL	222 OCCUPANTS	
WATER CLOSETS -- 1 PER 500	0.44 WATER CLOSETS	
LAVATORIES -- 1 PER 750	0.30 LAVATORIES	
DRINKING FOUNTAINS -- 1 PER 1,000		