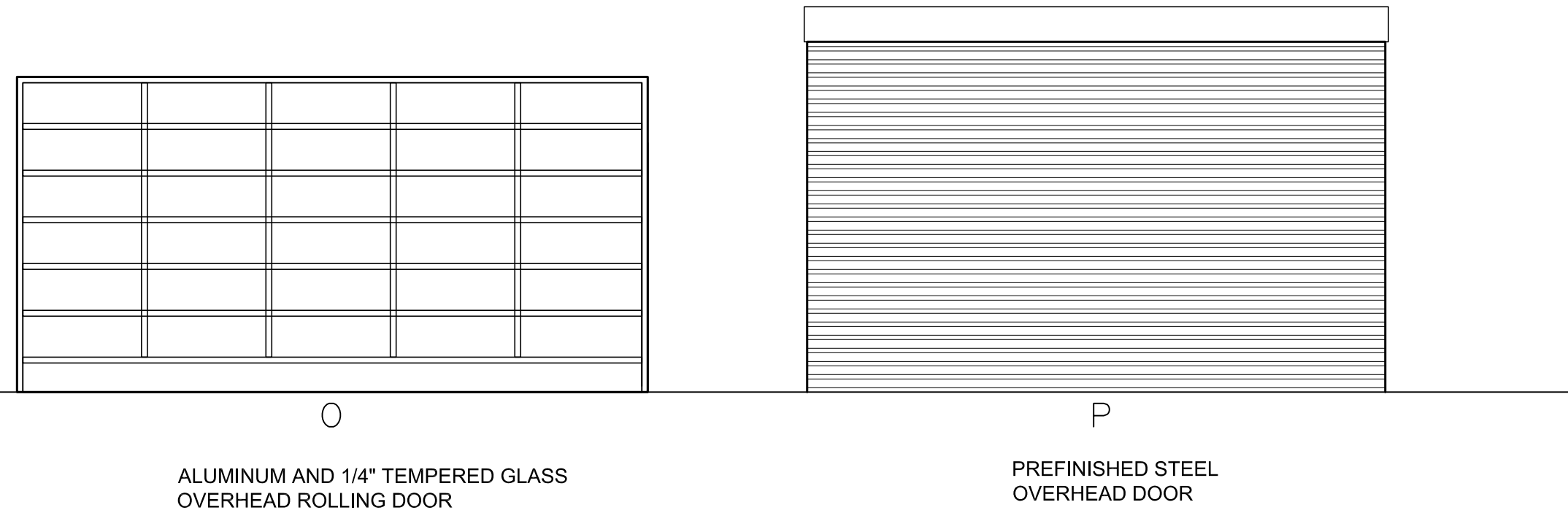
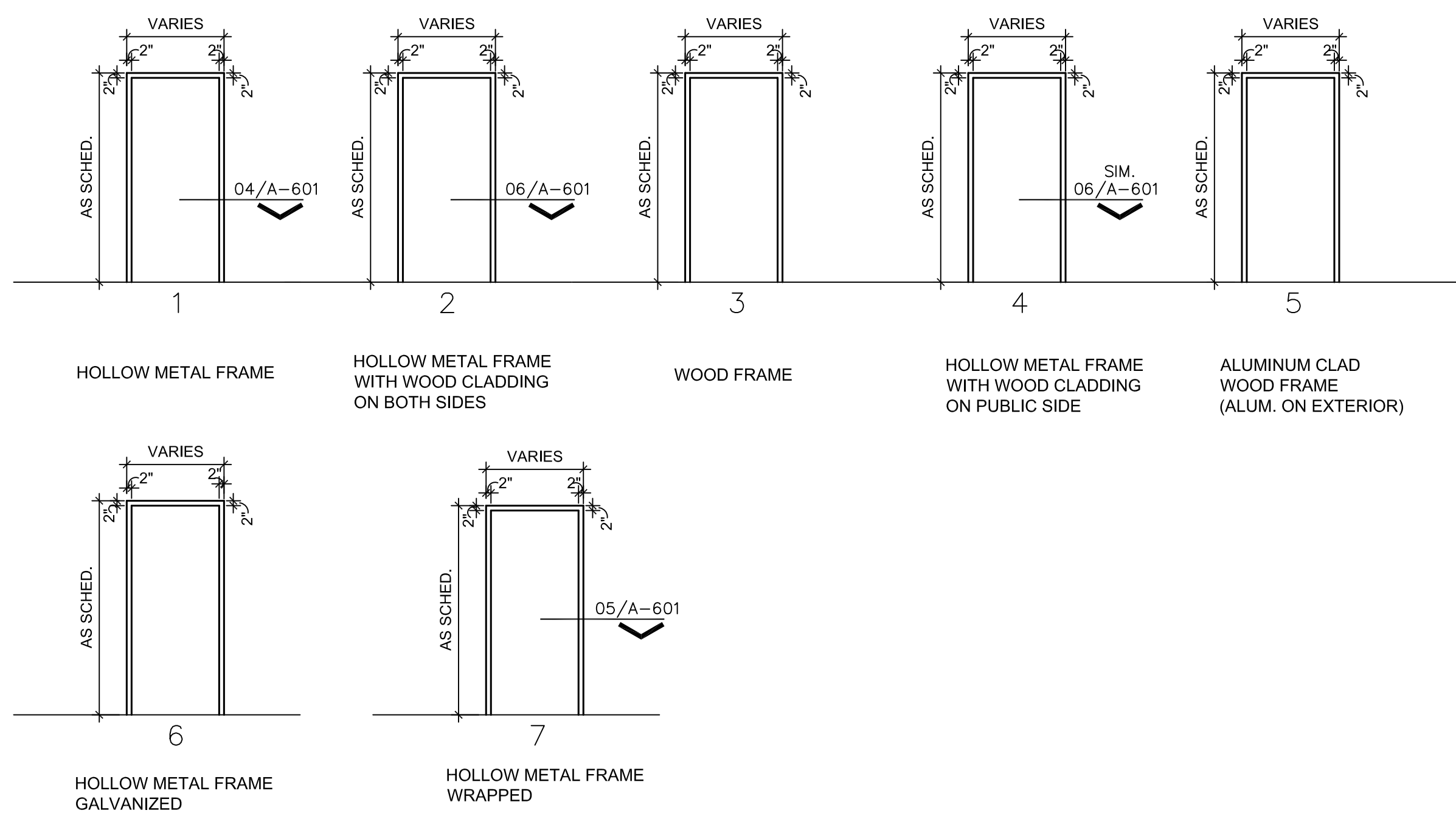


- A 1 3/4" EXTERIOR ALUMINUM GLAD WOOD DOOR W/ LOW E TEMPERED GLASS
- B 1 3/4" INTERIOR WOOD DOOR WITH STILES AND RAILS
- C 1 3/4" EXTERIOR WOOD DOOR W/ 1/4" TEMPERED GLASS
- D 1 3/4" INTERIOR WOOD DOOR W/ 1/4" TEMPERED GLASS
- E 1 3/4" EXTERIOR WOOD DOOR W/ LOW E TEMPERED GLASS
- F 1 3/4" INTERIOR SOLID CORE FLUSH WOOD DOOR W/ TRANSPARENT FINISH
- G 1 3/4" HOLLOW METAL FLUSH STEEL DOOR, PAINTED
* GALVANIZED ON EXTERIOR DOORS, PAINTED
- H 1 3/4" SOLID CORE FLUSH WOOD DOOR W/ TRANSPARENT FINISH AND 1/4" TEMPERED GLASS
- J 1 3/4" SOLID CORE FLUSH WOOD DOOR W/ PAINTED FINISH
- K 1 3/4" HOLLOW METAL PAINTED STEEL DOOR W/ 1/4" TEMPERED GLASS
- L 1 3/4" INTERIOR LOUVERED WOOD DOOR (UNDERCUT BY 2")
- M ELIASON 1" DOOR W/ CLEAR ACRYLIC WINDOW, 9"x30"
- N ALUMINUM STOREFRONT DOOR



01 DOOR TYPES

NOTE: PROVIDE SUPPORT AS REQUIRED FOR WEIGHT OF DOOR SPECIFIED & AS REQUIRED BY SUPPLIER.



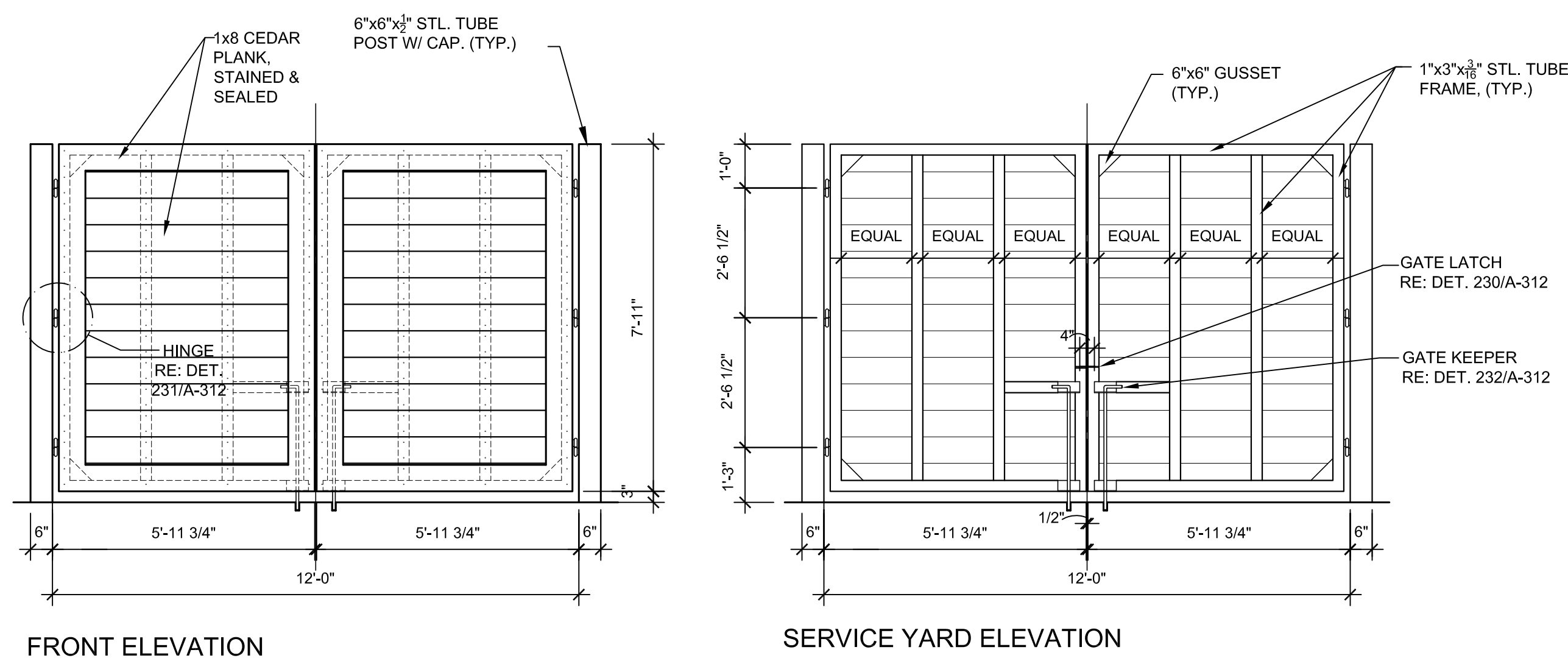
02 FRAME TYPES

NOTE: PROVIDE SUPPORT AS REQUIRED FOR WT. OF DOOR SPECIFIED & AS REQUIRED BY SUPPLIER.

NO.	LEAF	DOOR SIZE	DOOR TYPE	FRAME TYPE	HEAD DETAIL	JAMB DETAIL	SILL DETAIL	HDWR NO.	REMARKS
B100A		16'-0" X 7'-0"	P	-					GALVANIZED FRAME
B100B	S	3'-0" X 7'-0"	G	6					GALVANIZED DOOR AND FRAME - PAINT FINISH
B100C	S	3'-0" X 7'-0"	G	6					GALVANIZED DOOR AND FRAME - PAINT FINISH
B101A	S	3'-0" X 7'-0"	G	1	4/ A-601	4/ A-601			
B101B	S	3'-0" X 7'-0"	G	1	4/ A-601	4/ A-601			
B102A	S	3'-0" X 7'-0"	G	1	4/ A-601	4/ A-601			
101A	PR	6'-0" X 8'-0"	C	3	509/ A-521	513/ A-521			WOOD DOOR AND FRAME
101B	PR	6'-0" X 7'-0"	D	2	6/ A-601	6/ A-601			
101C	PR	6'-0" X 7'-0"	N	ALUM STRFRNT.	507/ A-521		504/ A-521		
102A	S	3'-0" X 7'-0"	D	2	6/ A-601	6/ A-601			
102B	PR	6'-0" X 7'-0"	C	5	508/ A-521	503/ A-521	504/ A-521		
102C	S	3'-0" X 7'-0"	B	2	6/ A-601	6/ A-601			
103A	S	3'-0" X 7'-0"	N	ALUM STRFRNT.	507/ A-521				PROVIDE FROSTED FILM ON DOOR GLASS
104A	S	3'-0" X 7'-0"	F	1	4/ A-601	4/ A-601			
105A	S	3'-0" X 7'-0"	F	1	4/ A-601	4/ A-601			
106A	S	3'-0" X 7'-0"	F	1	4/ A-601	4/ A-601			
108A	S	3'-0" X 7'-0"	F	1	4/ A-601	4/ A-601			
108B	S	3'-0" X 7'-0"	D	2	6/ A-601	6/ A-601			
109A	S	3'-0" X 7'-0"	F	1	4/ A-601	4/ A-601			
110A	PR	6'-0" X 7'-0"	D	2	6/ A-601	6/ A-601			
110B	PR	6'-0" X 7'-0"	N	ALUM STRFRNT.	507/ A-521	506/ A-521	504/ A-521		
110C		18'-0" X 9'-0"	O	-	505/ A-521	514/ A-521	501/ A-521		
110D	S	6'-0" X 7'-0"	N	ALUM STRFRNT.	507/ A-521	507/ A-521	504/ A-521		
112A	PR	6'-0" X 7'-0"	D	3	603/ A-521	604 SIM/ A-521			
113A	PR	6'-0" X 7'-0"	E	3	509/ A-521	513/ A-521			WOOD DOOR AND FRAME
113B	PR	6'-0" X 7'-0"	E	3	509/ A-521	513/ A-521			WOOD DOOR AND FRAME
114A	PR	6'-0" X 7'-0"	E	3	509/ A-521	513/ A-521			WOOD DOOR AND FRAME
115A	PR	6'-0" X 7'-0"	E	3	509/ A-521	513/ A-521			WOOD DOOR AND FRAME
115B	PR	6'-0" X 7'-0"	E	3	509/ A-521	513/ A-521			WOOD DOOR AND FRAME
116A	S	3'-0" X 7'-0"	B	3					
116B	S	2'-0" X 6'-8"	L	3					UNDERCUT DOOR BY 2"
116C	S	3'-0" X 6'-8"	L	3					UNDERCUT DOOR BY 2"
117A	S	3'-0" X 7'-0"	B	3					
117B	S	2'-0" X 6'-8"	L	3					UNDERCUT DOOR BY 2"
117C	S	2'-0" X 6'-8"	L	3					UNDERCUT DOOR BY 2"
117D	S	2'-0" X 6'-8"	L	3					UNDERCUT DOOR BY 2"
117E	S	3'-0" X 6'-8"	L	3					UNDERCUT DOOR BY 2"
118A	PR	6'-0" X 7'-0"	D	3	603/ A-521	604/ A-521			
118B	PR	6'-0" X 7'-0"	D	3	603/ A-521				
118C	PR	6'-0" X 7'-0"	B	2	6/ A-601	6/ A-601			

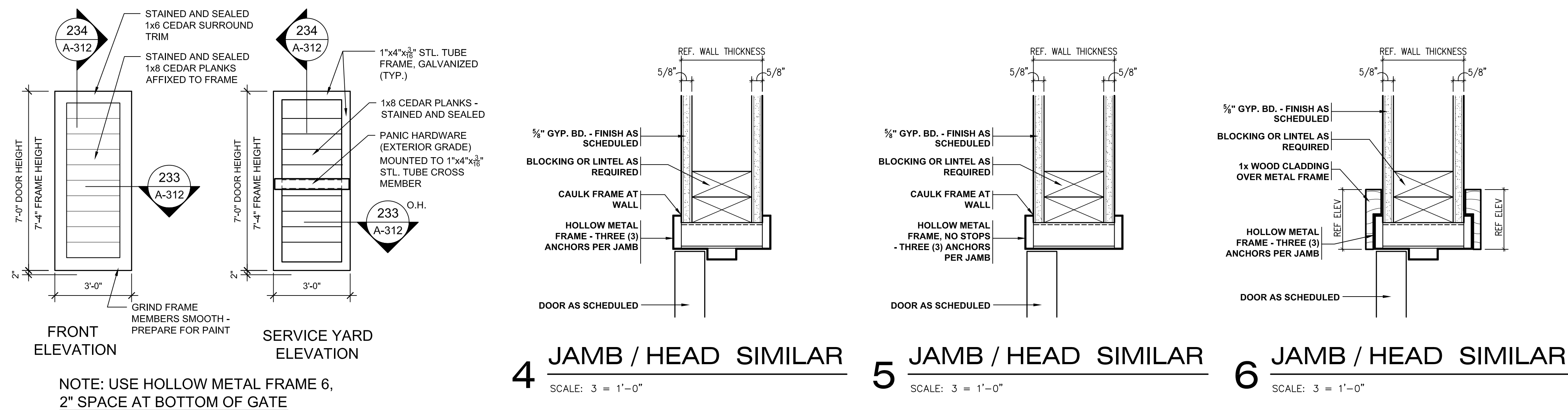
DOOR SCHEDULE, CON'T

NO.	LEAF	DOOR SIZE	DOOR TYPE	FRAME TYPE	HEAD DETAIL	JAMB DETAIL	SILL DETAIL	HDWR NO.	REMARKS
119A	PR	6'-0" X 7'-0"	D	3	603/ A-521	604/ A-521			
119B	S	3'-0" X 7'-0"	N	ALUM. STRFRNT.	507/ A-521	507/ A-521			
119C	PR	6'-0" X 7'-0"	B	2	6/ A-601	6/ A-601			
120A	PR	6'-0" X 7'-0"	H	4	6/ A-601 SIMILAR	6/ A-601 SIMILAR			DOUBLE ACTING WOOD GLAD PUBLIC SIDE PROVIDE FROSTED FILM ON DOOR GLASS
120B	PR	6'-0" X 7'-0"	N	ALUM. STRFRNT.	507/ A-521				
120C	S	2'-6" X 7'-0"	F	1	4/ A-601	4/ A-601			
121A	S	3'-0" X 7'-0"	B	2	6/ A-601	6/ A-601			
122A	S	3'-0" X 7'-0"	B	2	6/ A-601	6/ A-601			
123A	S	3'-0" X 7'-0"	F	1	4/ A-601	4/ A-601			
124A	PR	6'-0" X 7'-0"	F	1	4/ A-601	4/ A-601			
124B	PR	6'-0" X 7'-0"	G	6	512/ A-521	511/ A-521			GALVANIZED DOOR AND FRAME - PAINT FINISH
125A	S	3'-0" X 7'-0"	F	1	4/ A-601	4/ A-601			
126A	S	3'-0" X 7'-0"	F	1	4/ A-601	4/ A-601			
127A	PR	6'-0" X 7'-0"	M	7	5/ A-601	5/ A-601			DOUBLE ACTING
127B	PR	6'-0" X 7'-0"	M	7	5/ A-601	5/ A-601			DOUBLE ACTING
127C	S	4'-0" X 7'-0"	G	6	512/ A-521	511/ A-521			GALVANIZED DOOR AND FRAME - PAINT FINISH
128A	S	3'-0" X 7'-0"	B	2	6/ A-601	6/ A-601			
129A	S	3'-0" X 7'-0"	J	1	4/ A-601	4/ A-601			
130A	S	3'-0" X 7'-0"	J	1	4/ A-601	4/ A-601			
131A	S	3'-0" X 7'-0"	J	1	4/ A-601	4/ A-601			
132A	S	3'-0" X 7'-0"	J	1	4/ A-601	4/ A-601			
133A	S	3'-0" X 7'-0"	G	6	512 SIM/ A-521	511 SIM/ A-521			GALVANIZED DOOR AND FRAME - PAINT FINISH GALVANIZED FRAME - PAINT FINISH GALVANIZED FRAME - PAINT FINISH
133B									REFER TO DETAIL 03/A-601
133C	S								REFER TO DETAIL 03/A-601
134A	S	3'-0" X 7'-0"	F	1	4/ A-601	4/ A-601			
135A	S	3'-0" X 7'-0"	F	1	4/ A-601	4/ A-601			
138A	S	3'-0" X 7'-0"	H	2	6/ A-601	6/ A-601			
139A	S	3'-0" X 7'-0"	B	2	6/ A-601	6/ A-601			
141A	S	3'-0" X 7'-0"	B	2	6/ A-601	6/ A-601			
143A	S	3'-0" X 7'-0"	B	2	6/ A-601	6/ A-601			
M201A	S	3'-6" X 5'-0"	G	6	512 SIM/ A-521	511 SIM/ A-521			GALVANIZED DOOR AND FRAME - PAINT FINISH



03 GATES AT SERVICE YARD

SCALE: 3/8" = 1'-0"



4 JAMB / HEAD SIMILAR 5 JAMB / HEAD SIMILAR 6 JAMB / HEAD SIMILAR

SCALE: 3 = 1'-0"

NOTE: USE HOLLOW METAL FRAME 6, 2" SPACE AT BOTTOM OF GATE

Civil Engineer
SCHRICKEL ROLLINS AND ASSOCIATES, INC.
1161 CORPORATE DRIVE WEST SUITE 200
ARLINGTON, TEXAS 76006
P: 817.649.3216

Mechanical, Electrical, Plumbing Engineer
MEP SYSTEMS
918 DRAGON STREET
DALLAS, TEXAS 75207
P: 214.915.0929

Structural Engineer
RONALD A. ROBERTS ASSOCIATES, INC.
2948 N. STEMMONS FREEWAY
DALLAS, TEXAS 75247
P: 214.637.6299

Kitchen Consultant
PROFITABLE FOOD FACILITIES
14028 Bonnet Drive
POWAY, CALIFORNIA 92064
P: 858.748.7333

A/V Consultant
ACHIEVE AV, INC.
730 World Dr
CEDAR HILL, TEXAS 75104
P: 214.884.5951

THE AMERICAN DREAM CITY
CHESTER W. DITTO GOLF COURSE CLUBHOUSE
CITY OF ARLINGTON
801 BROWN BLVD - ARLINGTON, TX 76011

No.	Date
Revisions	
Project No.	21538.00
Drawn	- KLH
- DIM	
- KL	
- KJM	
Checked	- MDS
Approved	
Engineer	

CONSTRUCTION DOCUMENTS

Title: DOOR TYPES & SCHEDULE

Drawing No. **A-601**

Issue Date: OCTOBER 25, 2017

© COPYRIGHT REES ASSOCIATES, INC. 2017