

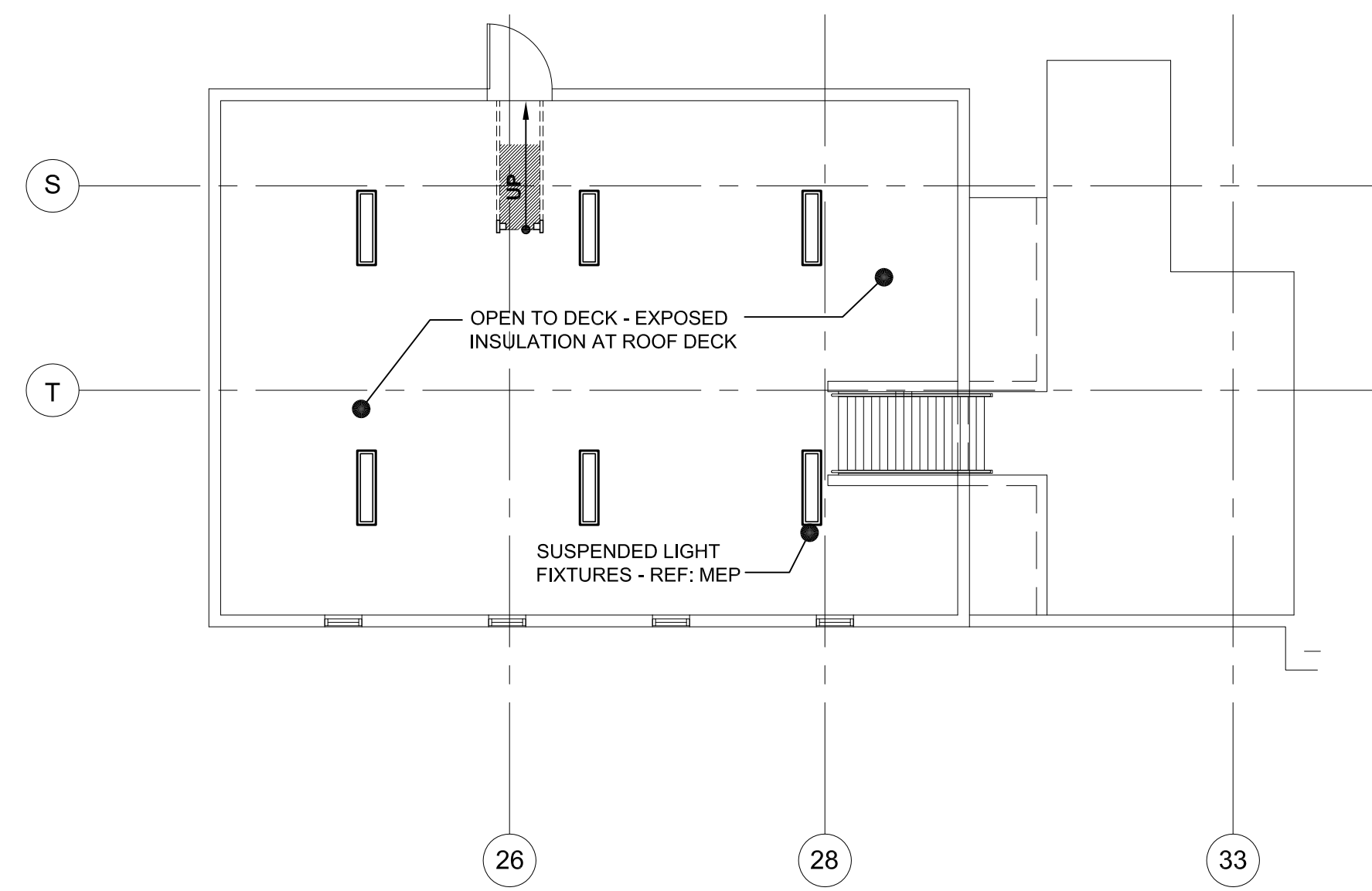
KEY PLAN

SCALE: 1/32" = 1'-0"

RCP LEGEND

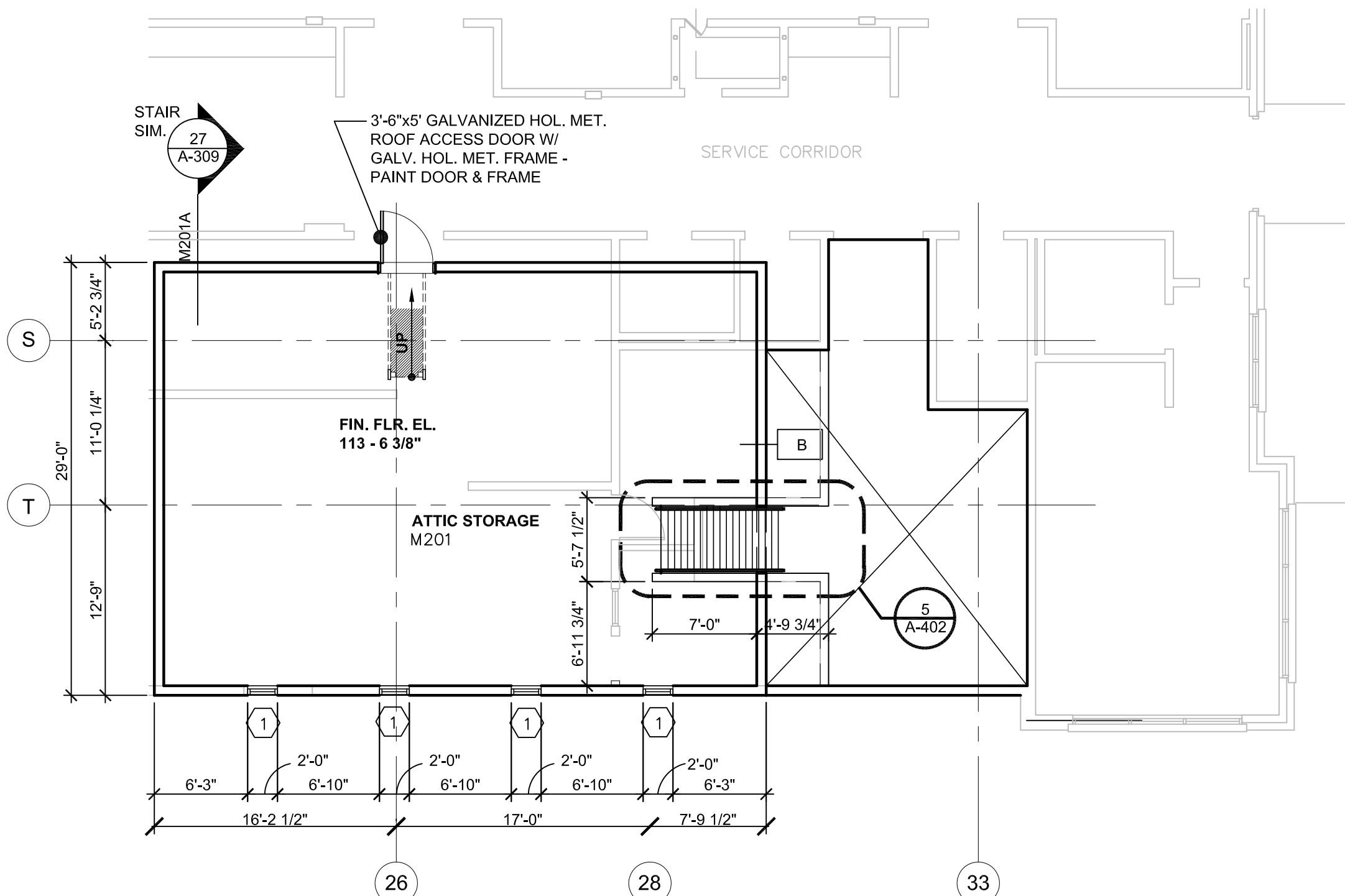
- 1 X 4 LIGHT FIXTURE - SUSPENDED
- EXTERIOR WALL PACK LIGHT FIXTURE
- LIGHTED EXIT SIGN

NOTE: REFER TO MEP DRAWINGS FOR LIGHTING SCHEDULE AND SPECIFICATIONS



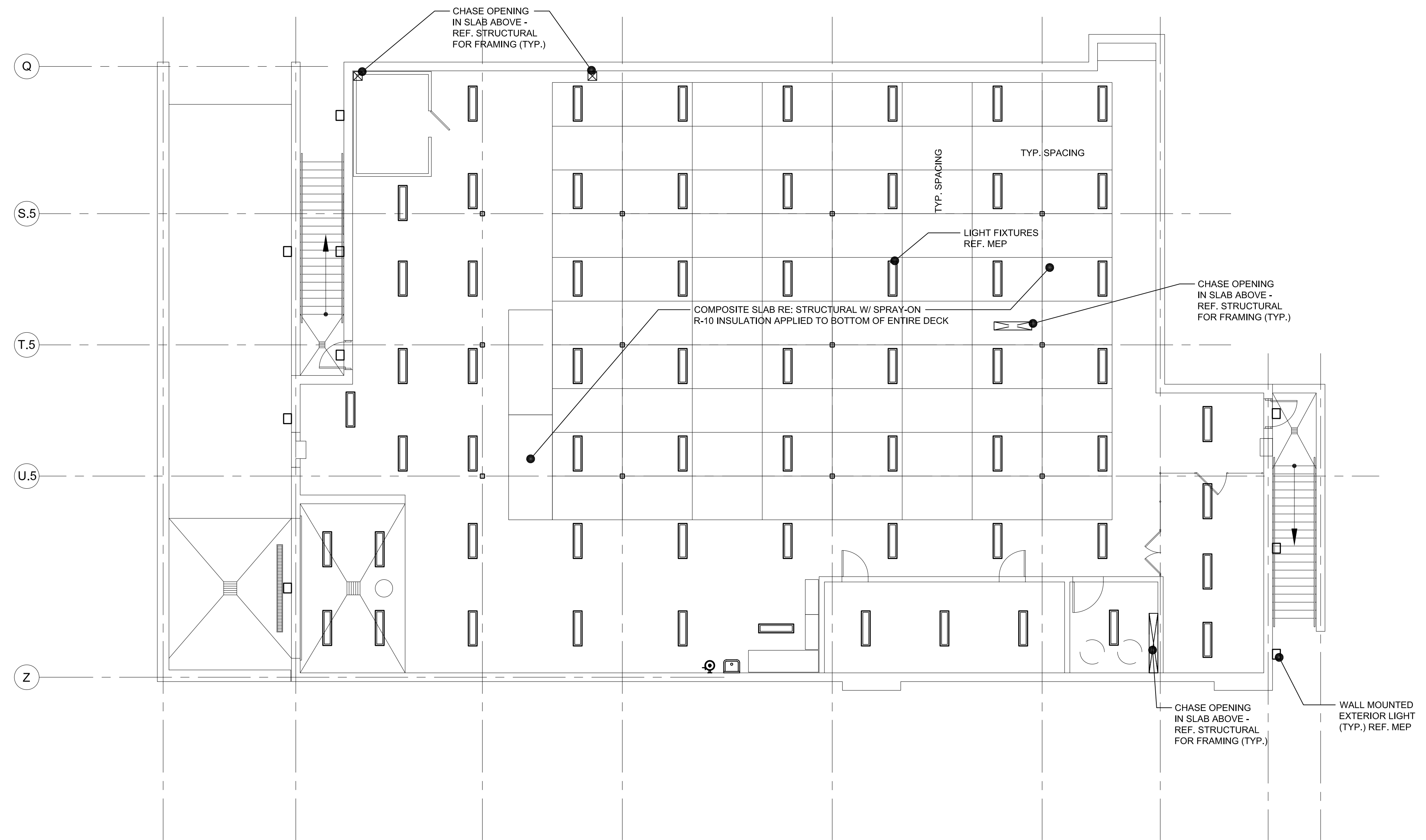
4 ATTIC STORAGE REFLECTED CEILING PLAN

SCALE: 1/8" = 1'-0"



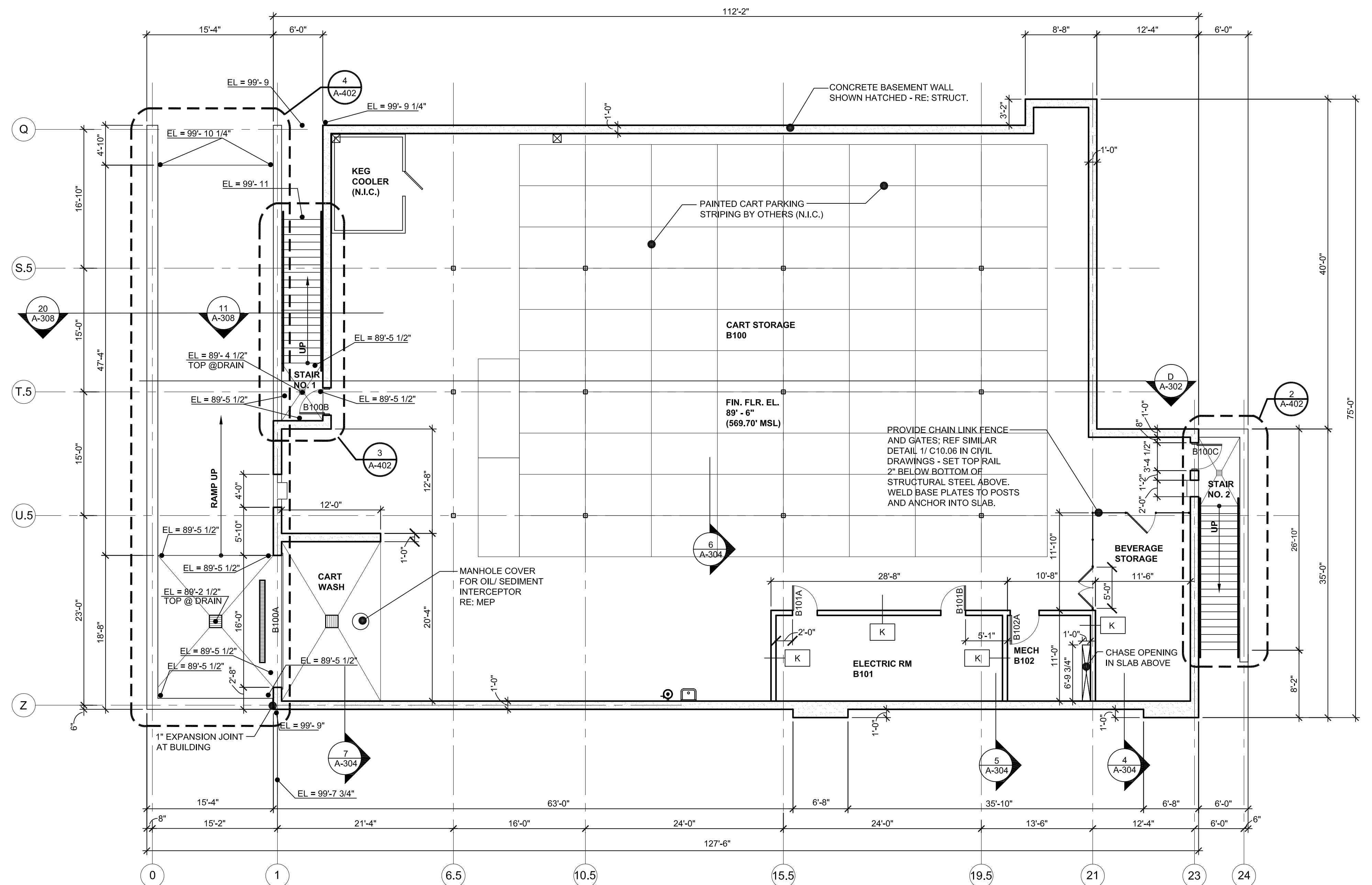
ATTIC STORAGE FLOOR PLAN

SCALE: 1/8" = 1'-0"



3 BASEMENT REFLECTED CEILING PLAN

SCALE: 1/8" = 1'-0"



1 BASEMENT FLOOR PLAN

SCALE: 1/8" = 1'-0"

Civil Engineer
SCHRICKEL ROLLINS AND ASSOCIATES, INC.
1161 CORPORATE DRIVE WEST
SUITE 200
ARLINGTON, TEXAS 76006
P: 817.649.3216

Mechanical, Electrical, Plumbing Engineer
MEP SYSTEMS
918 DRAGON STREET
DALLAS, TEXAS 75207
P: 214.915.0929

Structural Engineer
RONALD A. ROBERTS ASSOCIATES, INC.
2948 N. STEMMONS FREEWAY
DALLAS, TEXAS 75217
P: 214.637.6299

Kitchen Consultant
PROFITABLE FOOD FACILITIES
14026 Donart Drive
POWAY, CALIFORNIA 92064
P: 858.748.7333

A/V Consultant
ACHIEVE AV, INC.
730 World Dr
CEDAR HILL, TEXAS 75104
P: 214.884.5951



No.	Date
Revisions	
Project No.	21538.00
Drawn	- KLH
DWG	- DIM
KL	- KL
KL	- KL
Checked	- MDS
Approved	
Key:	Engineer



CONSTRUCTION DOCUMENTS

Title:
BASEMENT & SECOND - FLOOR AND REFLECTED CEILING PLANS

Drawing No.
A-102

Issue Date
OCTOBER 25, 2017