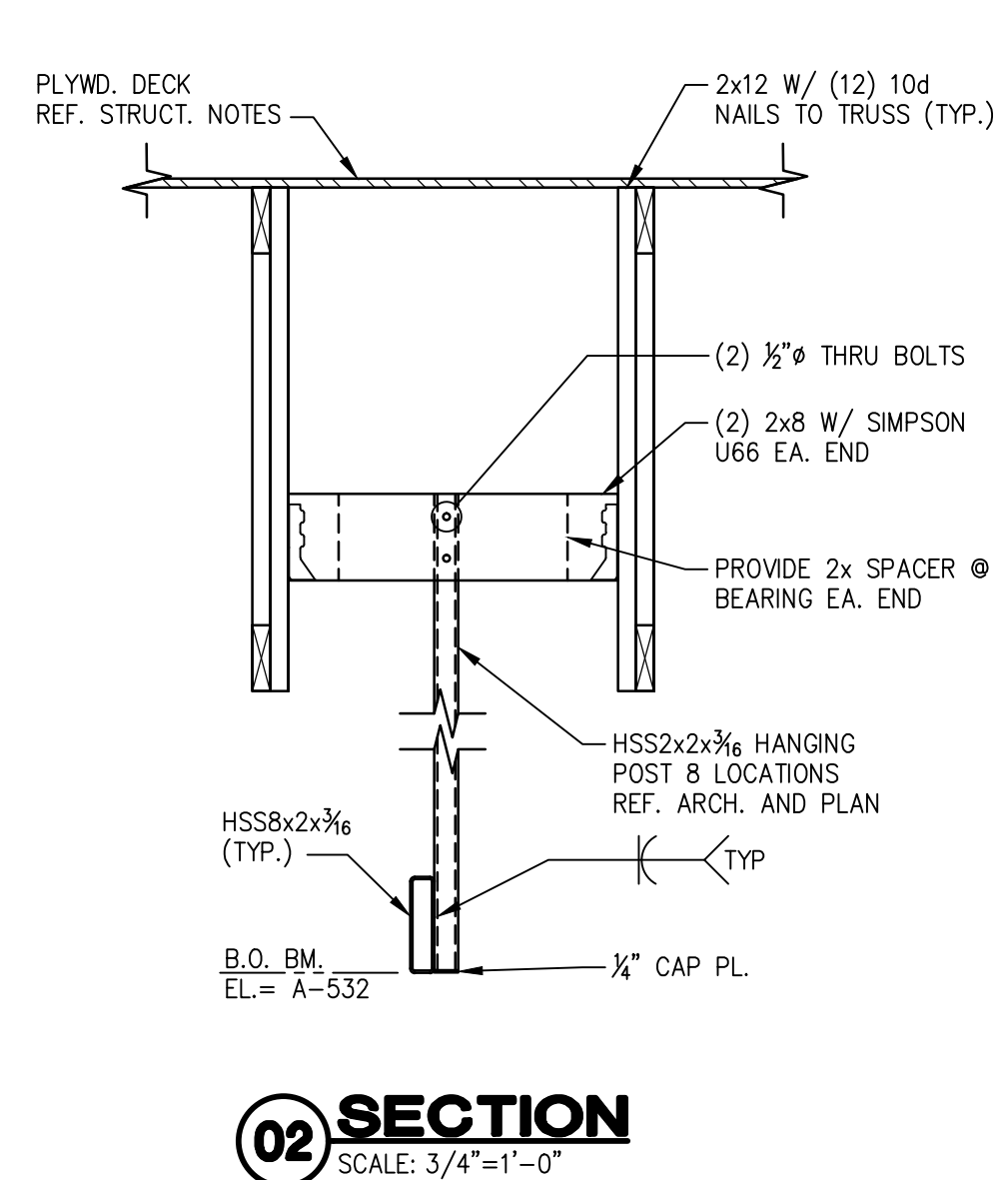
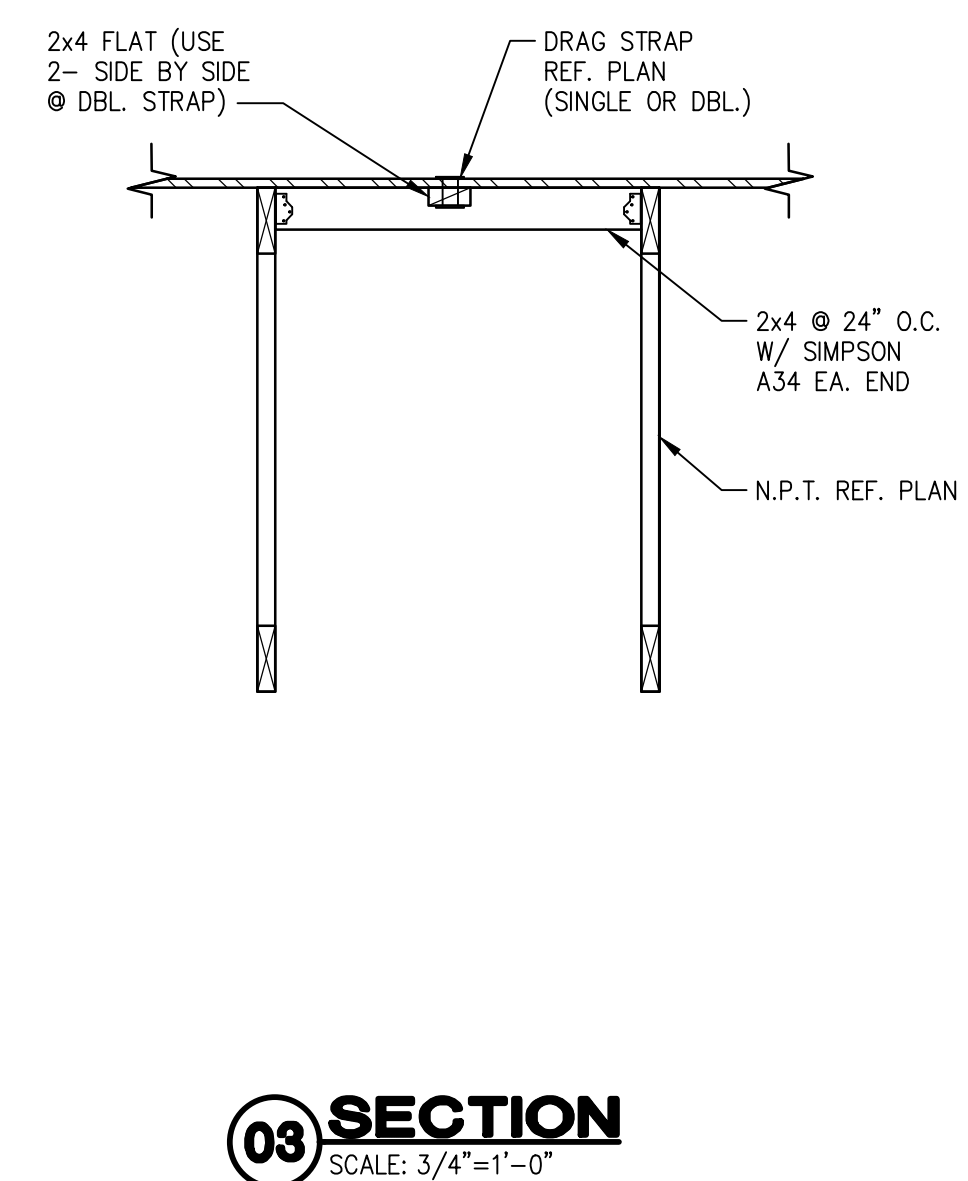


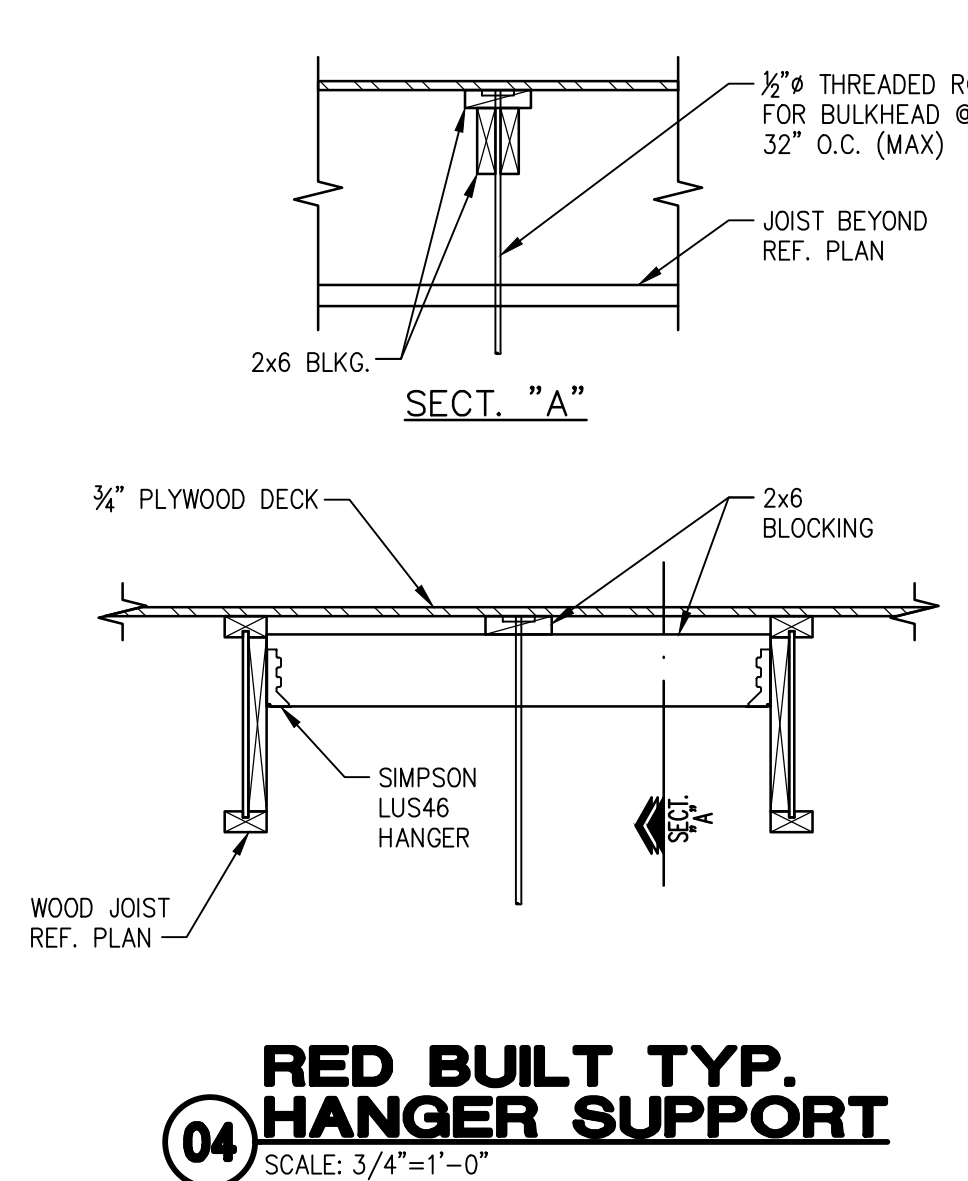
01 SECTION DRAG STRAP
SCALE: 3/4"=1'-0"



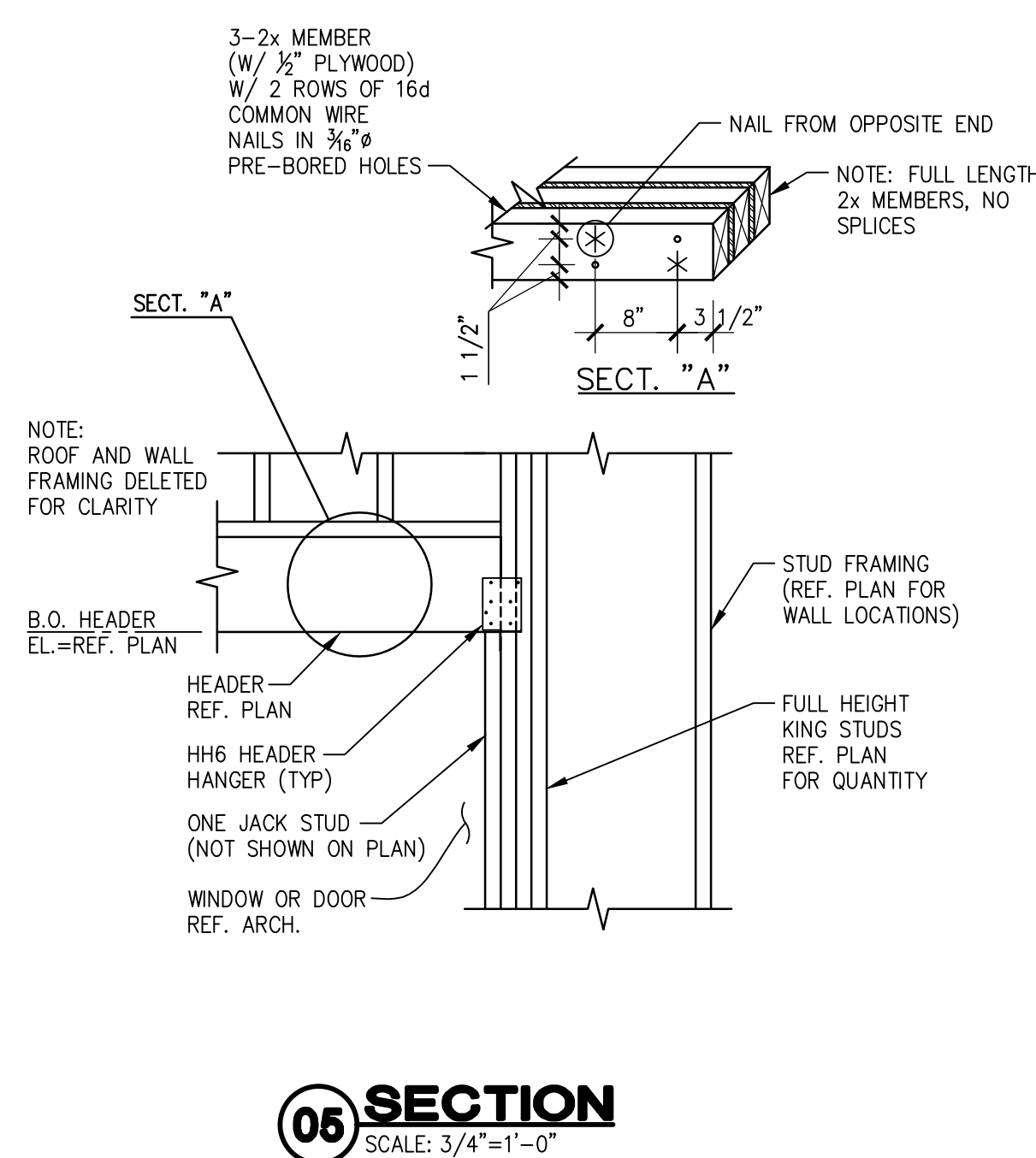
02 SECTION
SCALE: 3/4"=1'-0"



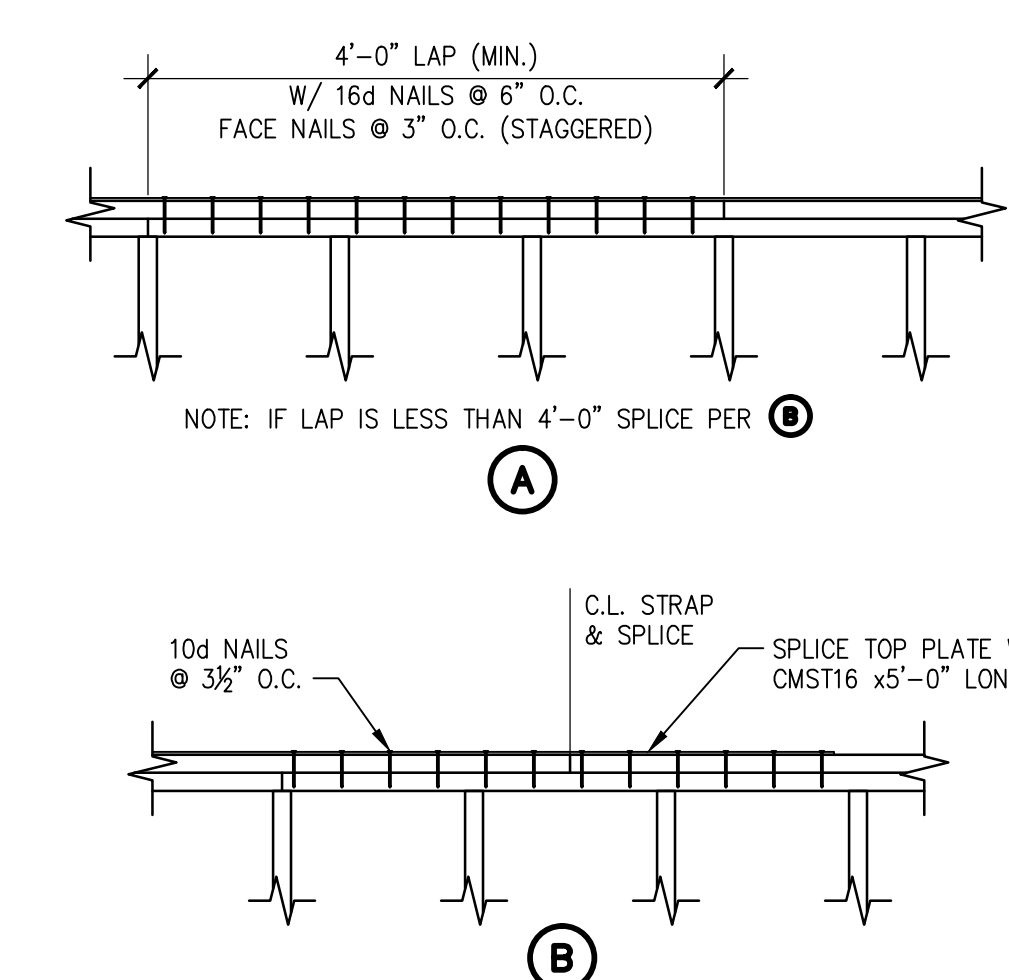
03 SECTION
SCALE: 3/4"=1'-0"



04 RED BUILT TYP. HANGER SUPPORT
SCALE: 3/4"=1'-0"



05 SECTION
SCALE: 3/4"=1'-0"



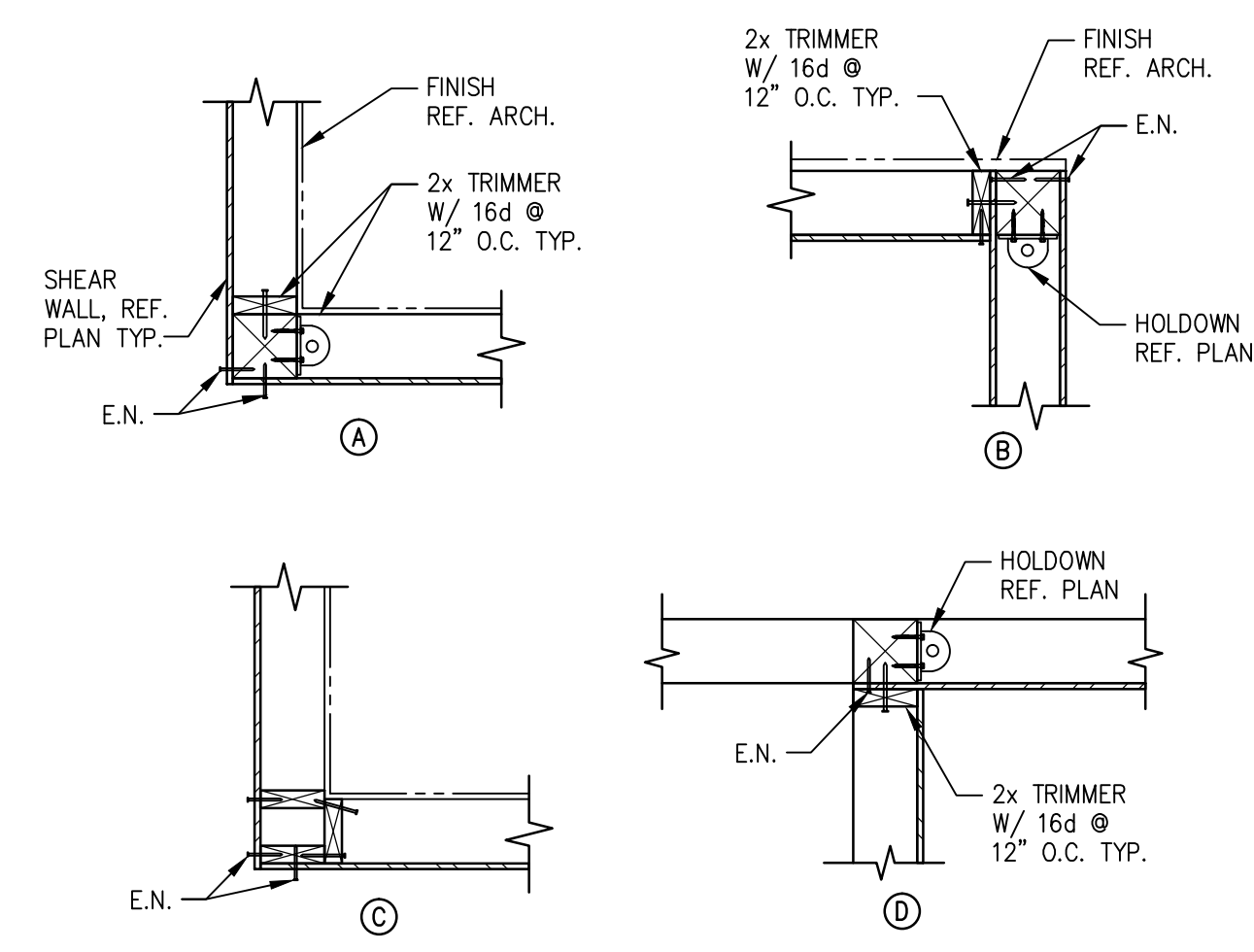
06 TOP PLATE SPLICE
SCALE: 3/4"=1'-0"

| EXTERIOR WALLS OR INTERIOR BEARING OR SHEAR WALLS | | |
|---|------------------------------|----------------------|
| STUD SIZE | MAX. BORED HOLE DIAMETER "D" | MAX. NOTCH DEPTH "N" |
| 2x4 | 1 3/8" | 3/4" |
| 2x6 | 2 3/8" | 1 3/8" |

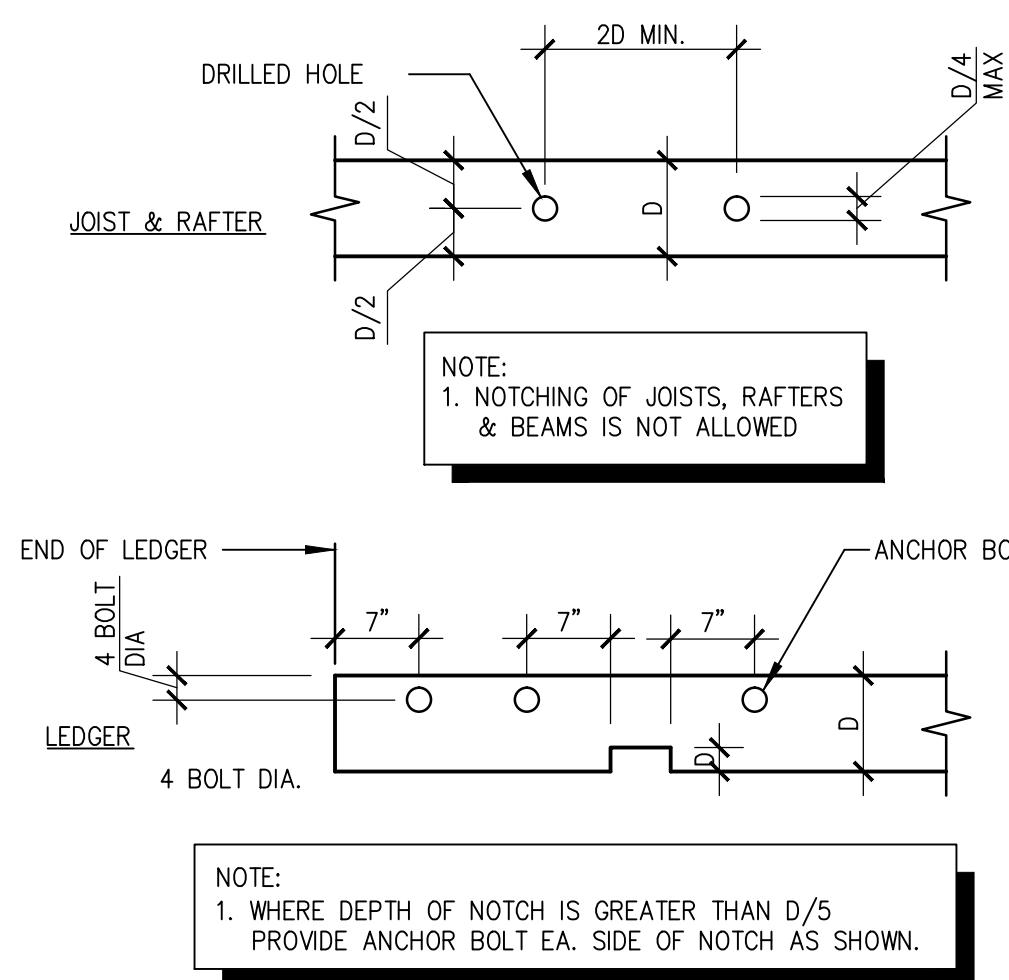
| INTERIOR NON-BEARING WALLS | | |
|----------------------------|------------------------------|----------------------|
| STUD SIZE | MAX. BORED HOLE DIAMETER "D" | MAX. NOTCH DEPTH "N" |
| 2x4 | 2" | 1 3/8" |
| 2x6 | 3 3/4" | 2 3/8" |

* FOR NOTCHES MORE THAN 1 3/8" (2x4) OR 2 3/8" (2x6) A METAL STRAP WILL BE REQUIRED. FOR NOTCHES UP TO 4" LONG USE HRS12 FOR EACH STUD

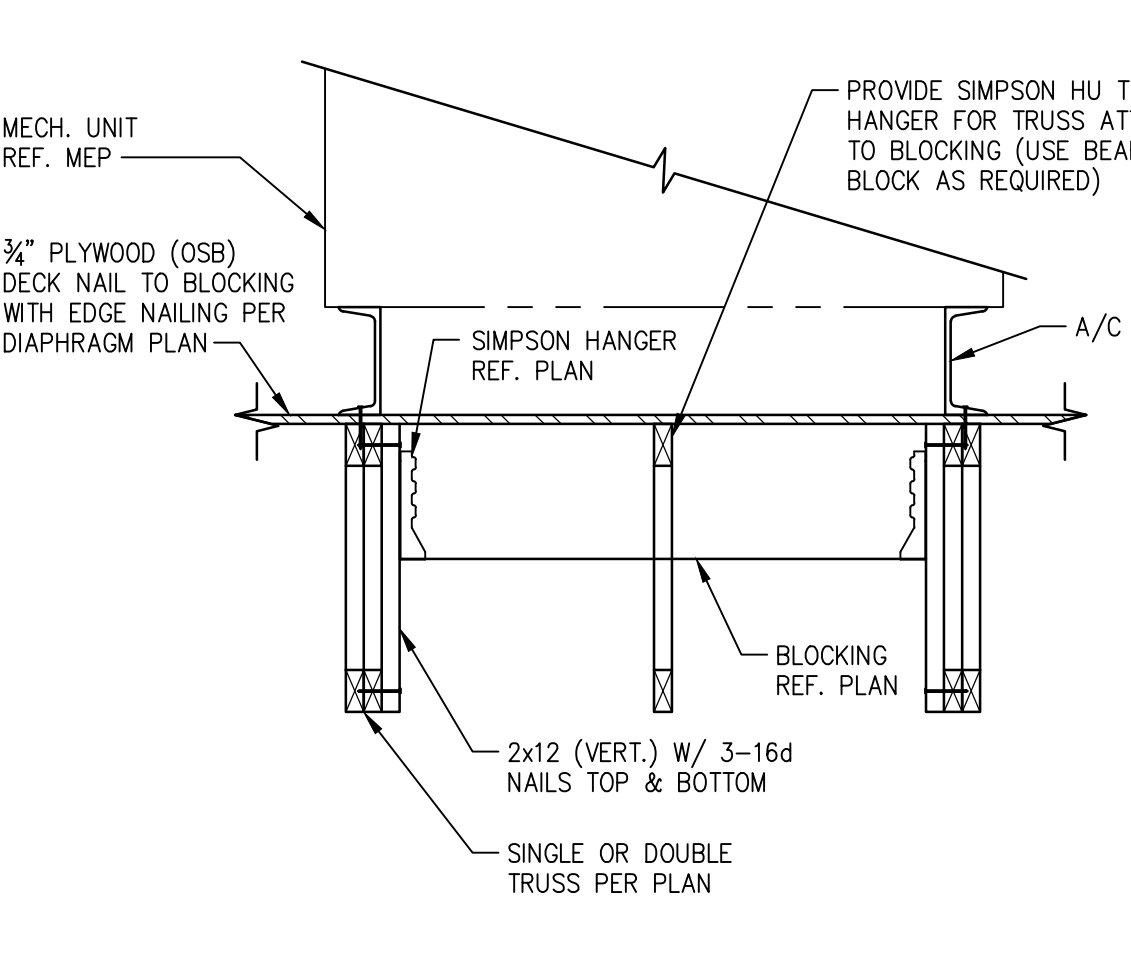
07 NOTCH & HOLE IN STUD & TOP PLATE
SCALE: 3/4"=1'-0"



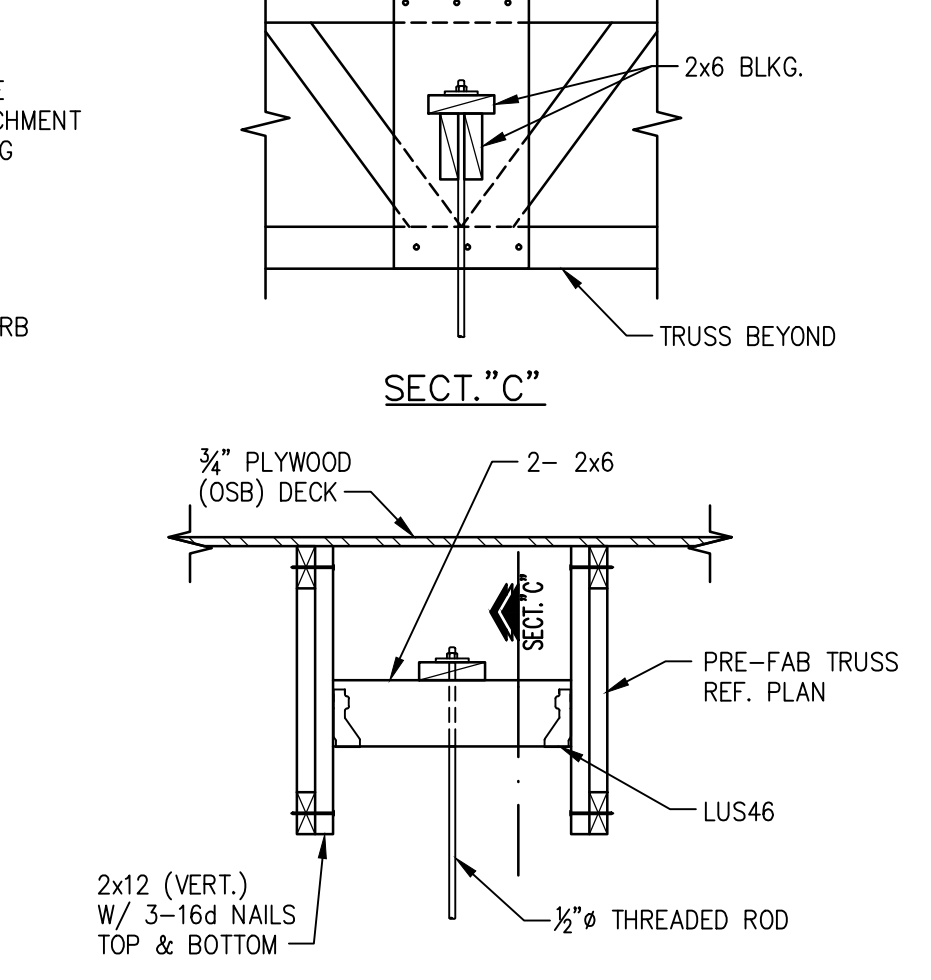
08 TYP. WALL CORNER
SCALE: 3/4"=1'-0"



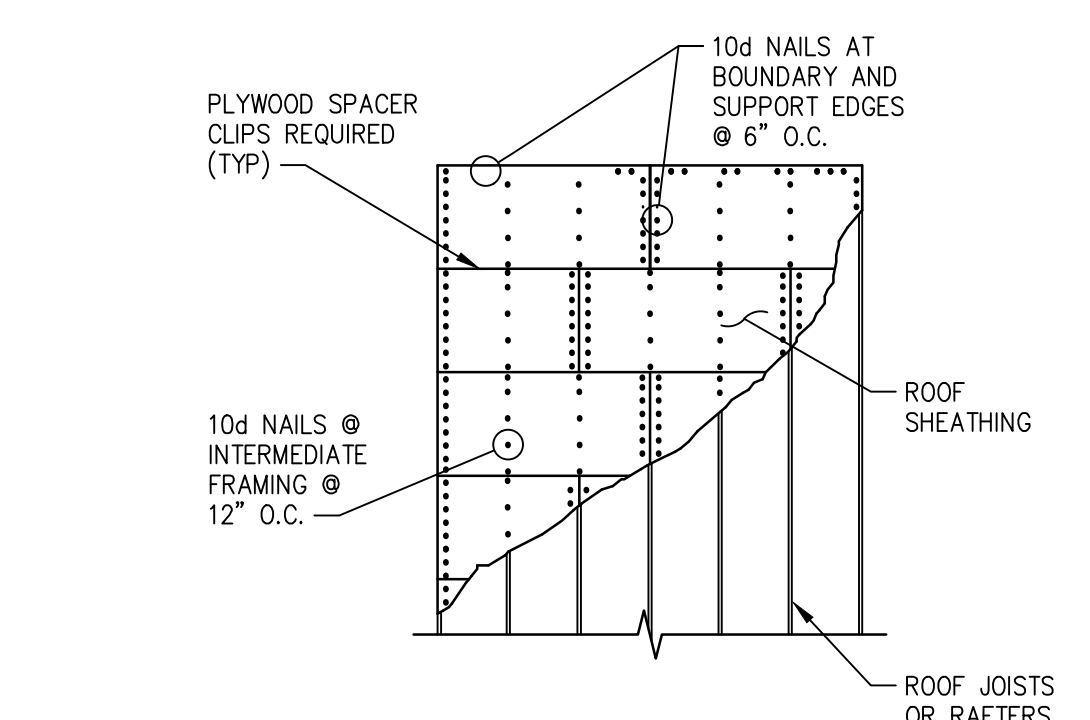
09 NOTCH & HOLE IN JOIST/LEDGER
SCALE: 3/4"=1'-0"



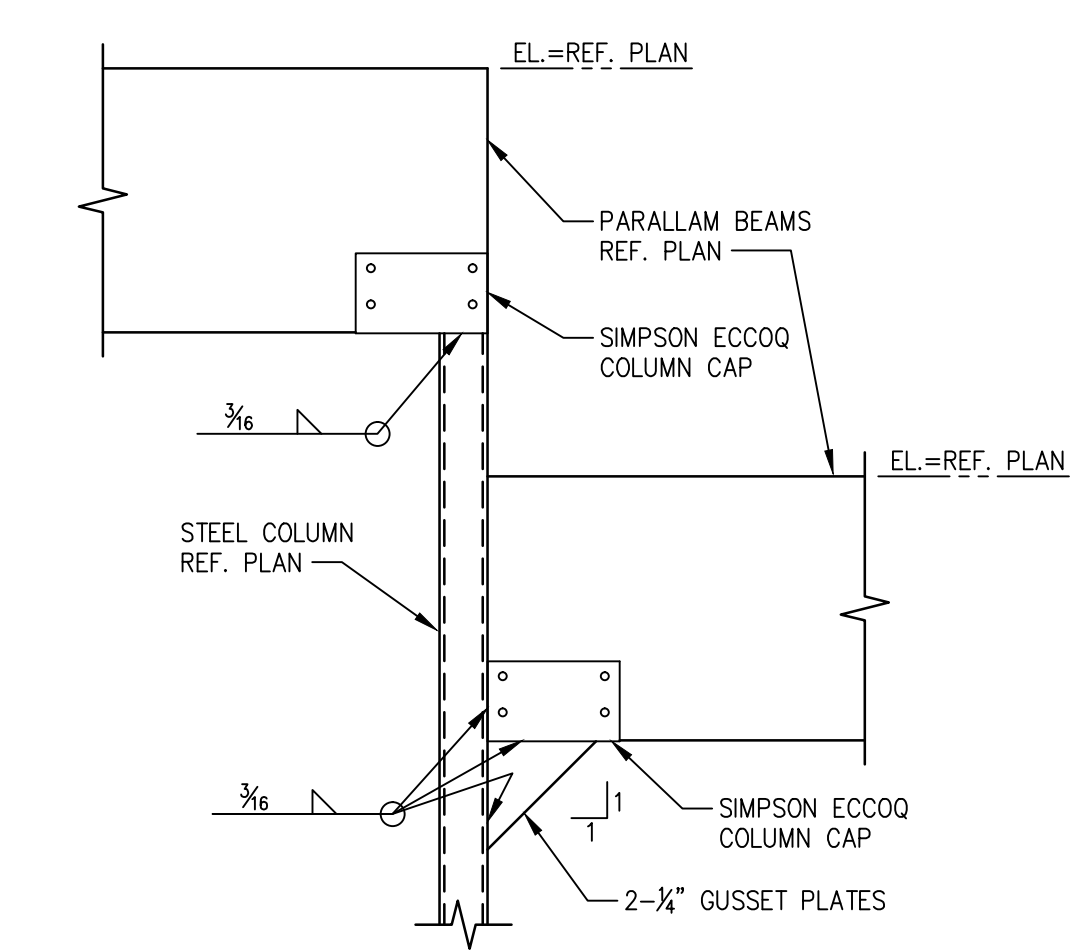
10 TYP. MECH. UNIT SUPPORT
SCALE: 3/4"=1'-0"



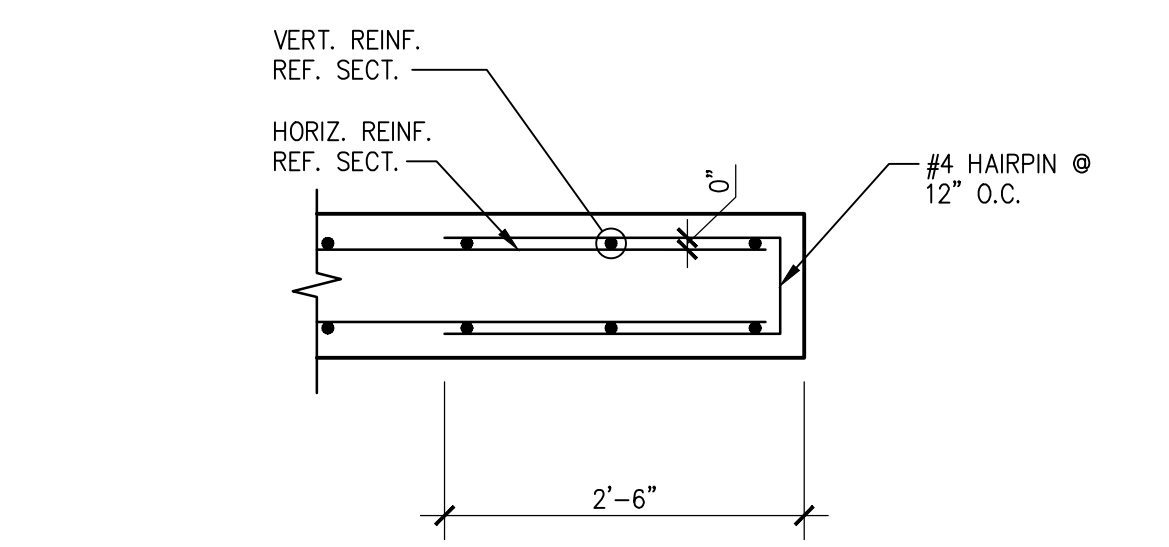
11 N.P.T. TYP. HANGER SUPPORT
SCALE: 3/4"=1'-0"



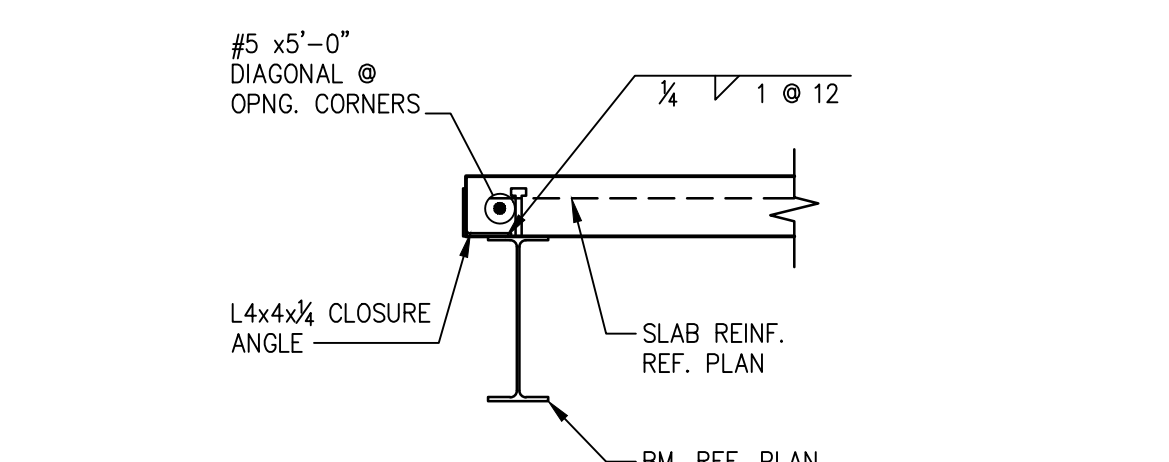
12 ROOF DIAPHRAGM NAILING
SCALE: NONE



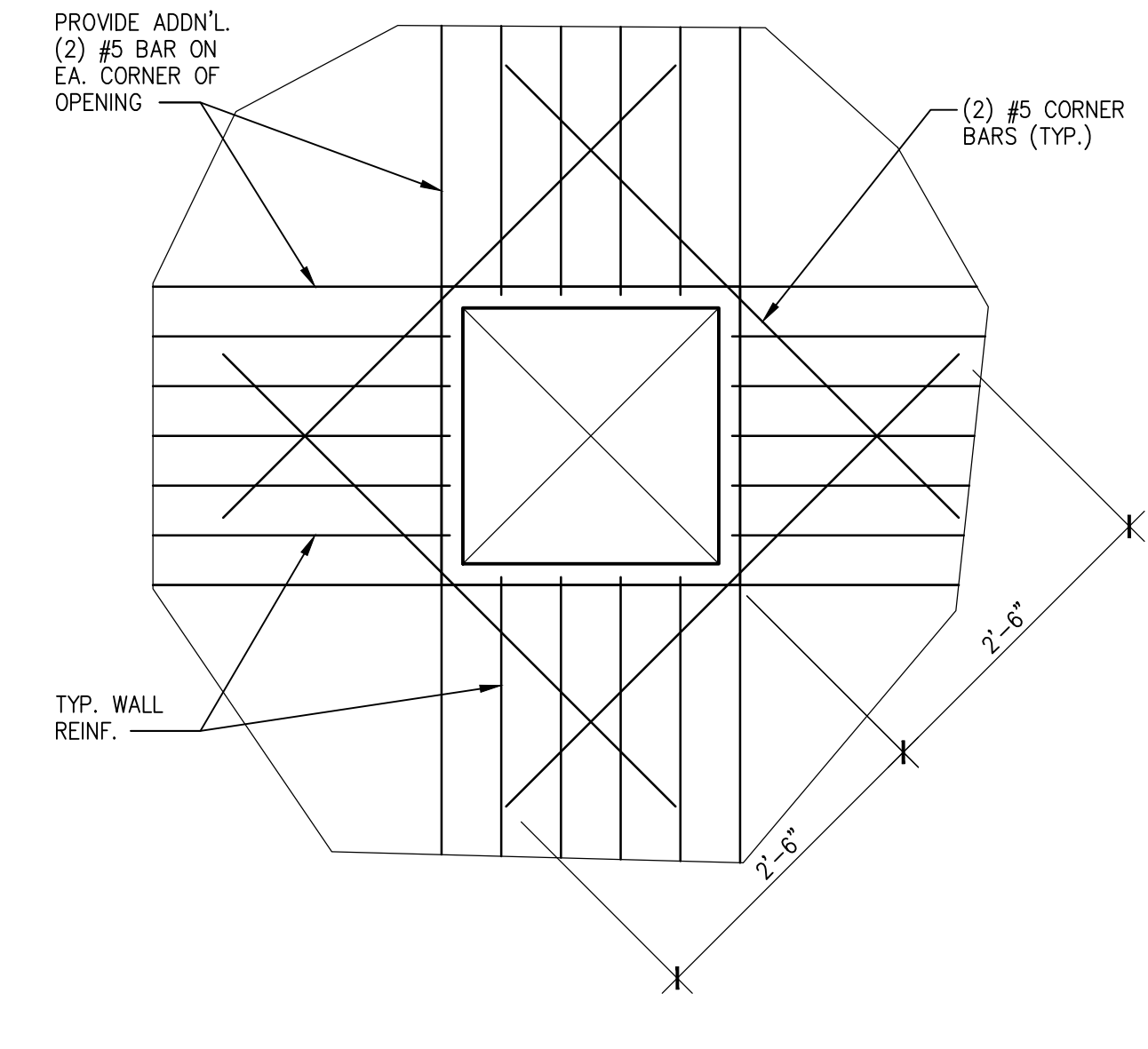
13 SECTION
SCALE: 3/4"=1'-0"



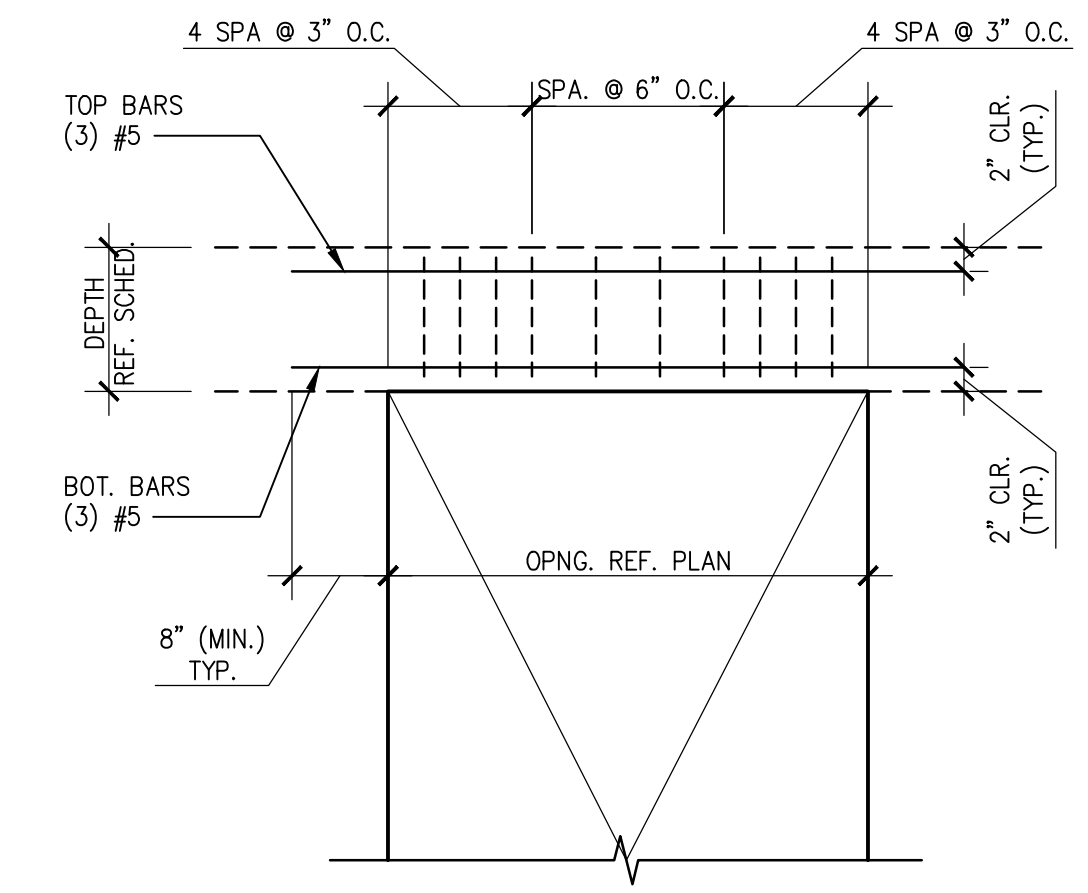
14 TYP. CONC. END WALL DETAIL
SCALE: 3/4"=1'-0"



15 TYP. OPNG. IN COMP. SLAB
SCALE: 3/4"=1'-0"



16 TYP. OPNG. IN CONC. WALL
SCALE: 3/4"=1'-0"



17 TYP. CAST IN PLACE HEADER DETAIL
SCALE: 3/4"=1'-0"

STATE OF TEXAS
ANDREW J. LLORET
72614
PROFESSIONAL ENGINEER
10/25/17

Ronald R. Roberts
Associates, Inc.
Consulting Engineers
TX FIRM REG. #511
2948 N. Stemmons Freeway
Dallas, Texas 75247-0103
Phone: (214) 637-6299
www.rara.net

Civil Engineer
SCHRICKEL, ROLLINS AND ASSOCIATES, INC.
1161 CORPORATE DRIVE WEST SUITE 200
ARLINGTON, TEXAS 76006
P: 817.649.3216

Mechanical, Electrical, Plumbing Engineer
MEP SYSTEMS
918 DRAGON STREET
DALLAS, TEXAS 75207
P: 214.915.0929

Structural Engineer
RONALD A. ROBERTS ASSOCIATES, INC.
2948 N. STEMMONS FREEWAY
DALLAS, TEXAS 75247
P: 214.637.6299

Kitchen Consultant
PROFITABLE FOOD FACILITIES
14026 Donert Drive
POWAY, CALIFORNIA 92064
P: 858.748.3333

A/V Consultant
ACHEVE AV, INC.
730 Ward Dr.
CEDAR HILL, TEXAS 75104
P: 214.884.9891

ARLINGTON
THE AMERICAN OCEAN CITY
CHESTER W. DITTO GOLF COURSE CLUBHOUSE
CITY OF ARLINGTON
801 BROWN BLVD - ARLINGTON, TX 76011

| | |
|-------------|----------|
| No. | Date |
| Revisions | |
| Project No. | 21538.00 |
| Drawn | |
| Checked | |
| MDS | |
| Approved | |
| Engineer | |

PLAN NORTH

CONSTRUCTION DOCUMENTS

FRAMING DETAILS

Drawing No.

S-401

Issue Date
OCTOBER 25, 2017
© COPYRIGHT REES ASSOCIATES, INC. 2017