

**Civil Engineer**  
SCHRICKEL, ROLLINS  
AND ASSOCIATES, INC.  
1161 CORPORATE DRIVE WEST  
SUITE 200  
ARLINGTON, TEXAS 76006  
P: 817.649.5216

**Mechanical, Electrical,  
Plumbing Engineer**  
MEP SYSTEMS  
918 DRAGON STREET  
DALLAS, TEXAS 75207  
P: 214.915.0929

**Structural Engineer**  
RONALD A. ROBERTS ASSOCIATES, INC.  
2948 N. STEMMONS FREEWAY  
DALLAS, TEXAS 75207  
P: 214.637.6299

**Kitchen Consultant**  
PROFITABLE FOOD FACILITIES  
14026 DONNET DRIVE  
POWAY, CALIFORNIA 92064  
P: 858.748.7333

**AV Consultant**  
ACHEVE AV, INC.  
730 WARD DR.  
CEDAR HILL, TEXAS 75104  
P: 214.884.0951



**CHESTER W. BITTO GOLF COURSE  
CLUBHOUSE**  
CITY OF ARLINGTON  
801 BROWN BLVD - ARLINGTON, TX 76011

No. | Date

Revisions  
Project No. 21538.00

Drawn  
Checked  
MDS

Approved  
Architect

Checked  
MDS

Approved  
Engineer

Key:

PLAN NORTH

**CONSTRUCTION  
DOCUMENTS**

Title:  
ROOF FRAMING □ LAN

Title:

Issue Date

Drawing No.  
**S-201**

Issue Date

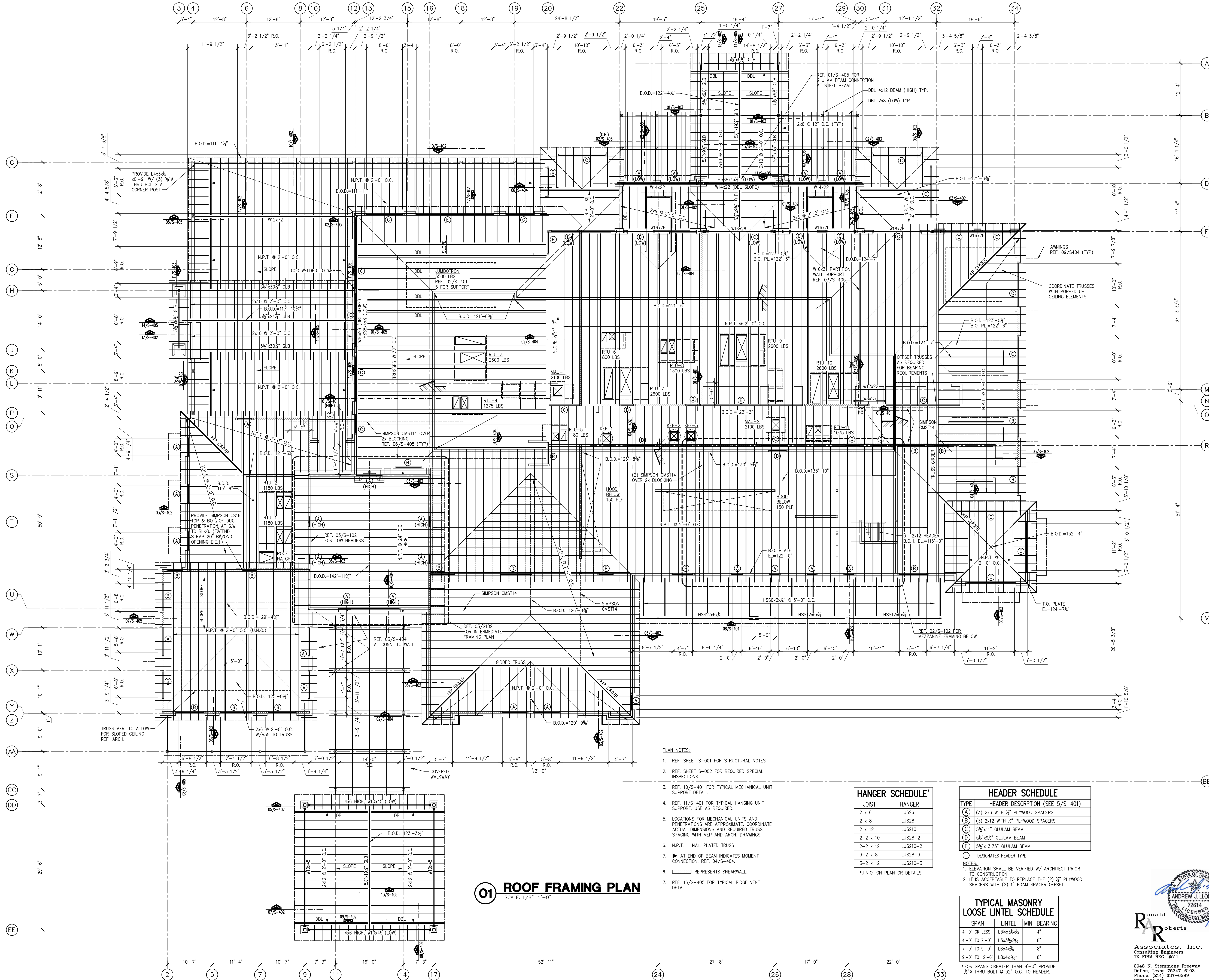
Issue Date

Issue Date

Issue Date

Issue Date

Issue Date



- PLAN NOTES:
- REF. SHEET S-001 FOR STRUCTURAL NOTES.
  - REF. SHEET S-002 FOR REQUIRED SPECIAL INSPECTIONS.
  - REF. 10/S-401 FOR TYPICAL MECHANICAL UNIT SUPPORT DETAIL.
  - REF. 11/S-401 FOR TYPICAL HANGING UNIT SUPPORT. USE AS REQUIRED.
  - LOCATIONS FOR MECHANICAL UNITS AND PENETRATIONS ARE APPROXIMATE. COORDINATE ACTUAL DIMENSIONS AND REQUIRED TRUSS SPACING WITH MEP AND ARCH. DRAWINGS.
  - N.P.T. = NAIL PLATED TRUSS
  - ▶ AT END OF BEAM INDICATES MOMENT CONNECTION. REF. 04/S-404.
  - ▨ REPRESENTS SHEARWALL.
  - REF. 16/S-405 FOR TYPICAL RIDGE VENT DETAIL.

JOIST	HANGER
2 x 6	LUS26
2 x 8	LUS28
2 x 12	LUS210
2-2 x 10	LUS28-2
2-2 x 12	LUS210-2
3-2 x 8	LUS28-3
3-2 x 12	LUS210-3

\*U.N.O. ON PLAN OR DETAILS

TYPE	HEADER DESCRIPTION (SEE 5/S-401)
(A)	(3) 2x6 WITH 1/2" PLYWOOD SPACERS
(B)	(3) 2x12 WITH 1/2" PLYWOOD SPACERS
(C)	5 1/2"x11" GLULAM BEAM
(D)	5 1/2"x9" GLULAM BEAM
(E)	5 1/2"x13.75" GLULAM BEAM

○ = DESIGNATES HEADER TYPE

NOTES:  
1. ELEVATION SHALL BE VERIFIED W/ ARCHITECT PRIOR TO CONSTRUCTION.  
2. IT IS ACCEPTABLE TO REPLACE THE (2) 1/2" PLYWOOD SPACERS WITH (2) 1" FOAM SPACER OFFSET.

SPAN	LINTEL	MIN. BEARING
4'-0" OR LESS	1.3/2x3/2x1/4	4"
4'-0" TO 7'-0"	1.5x3/2x3/4	8"
7'-0" TO 9'-0"	1.6x4x3/4	8"
9'-0" TO 12'-0"	1.8x4x3/4	8"

\*FOR SPANS GREATER THAN 9'-0" PROVIDE 1/2" THRU BOLT @ 32" O.C. TO HEADER.

**01 ROOF FRAMING PLAN**  
SCALE: 1/8"=1'-0"

ANDREW J. LLORET  
72614  
PROFESSIONAL ENGINEER  
10/25/17

Ronald A. Roberts  
Associates, Inc.  
Consulting Engineers  
TX FIRM REG. #511

2948 N. Stemmons Freeway  
Dallas, Texas 75247-0103  
Phone: (214) 637-6299  
www.rara.net