

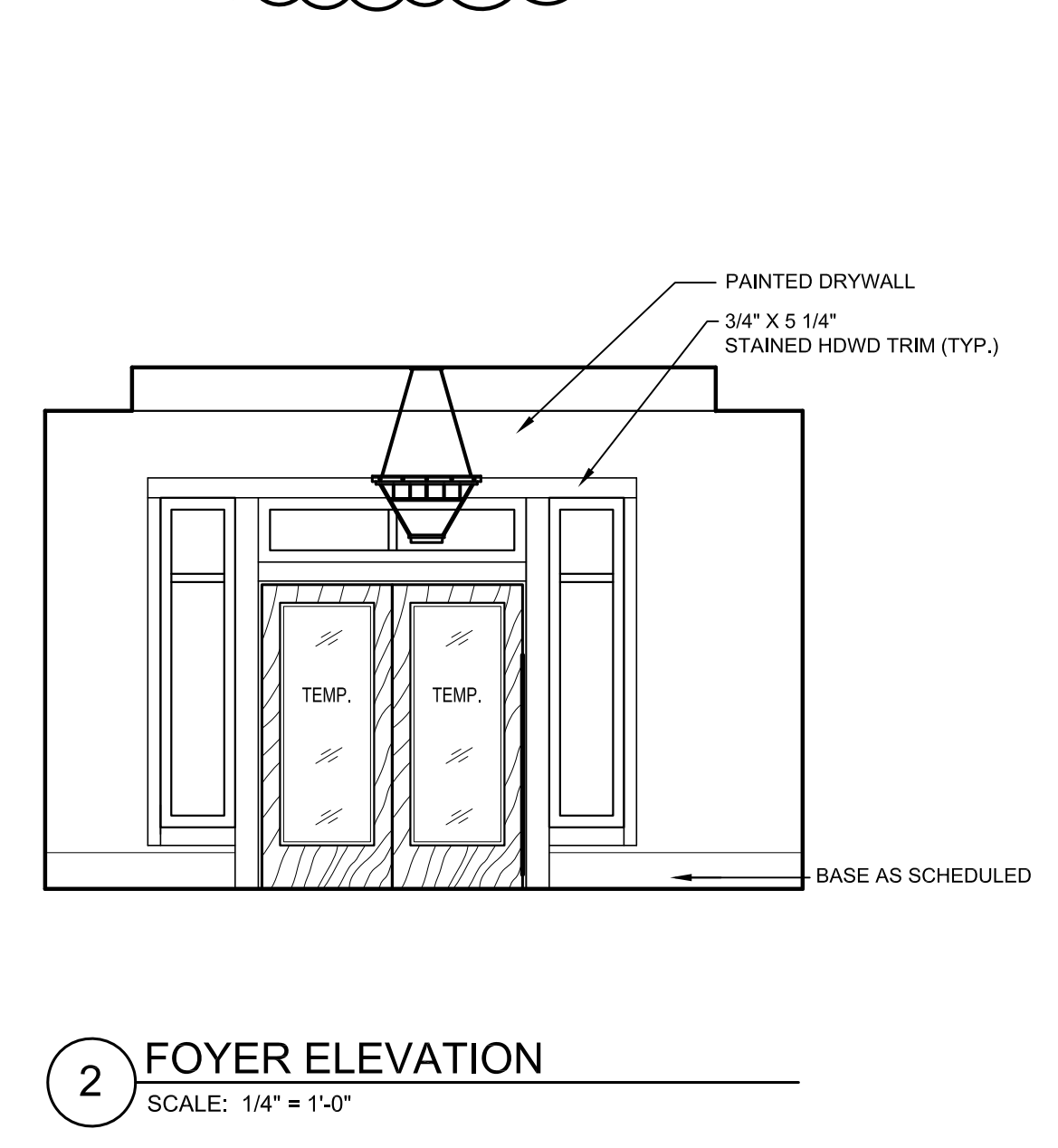
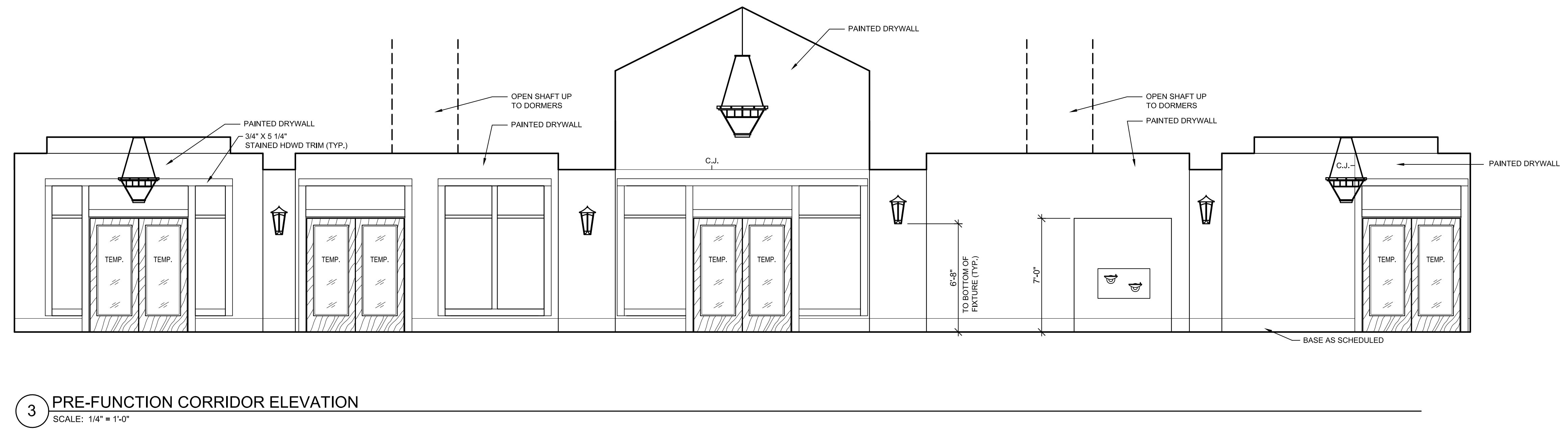
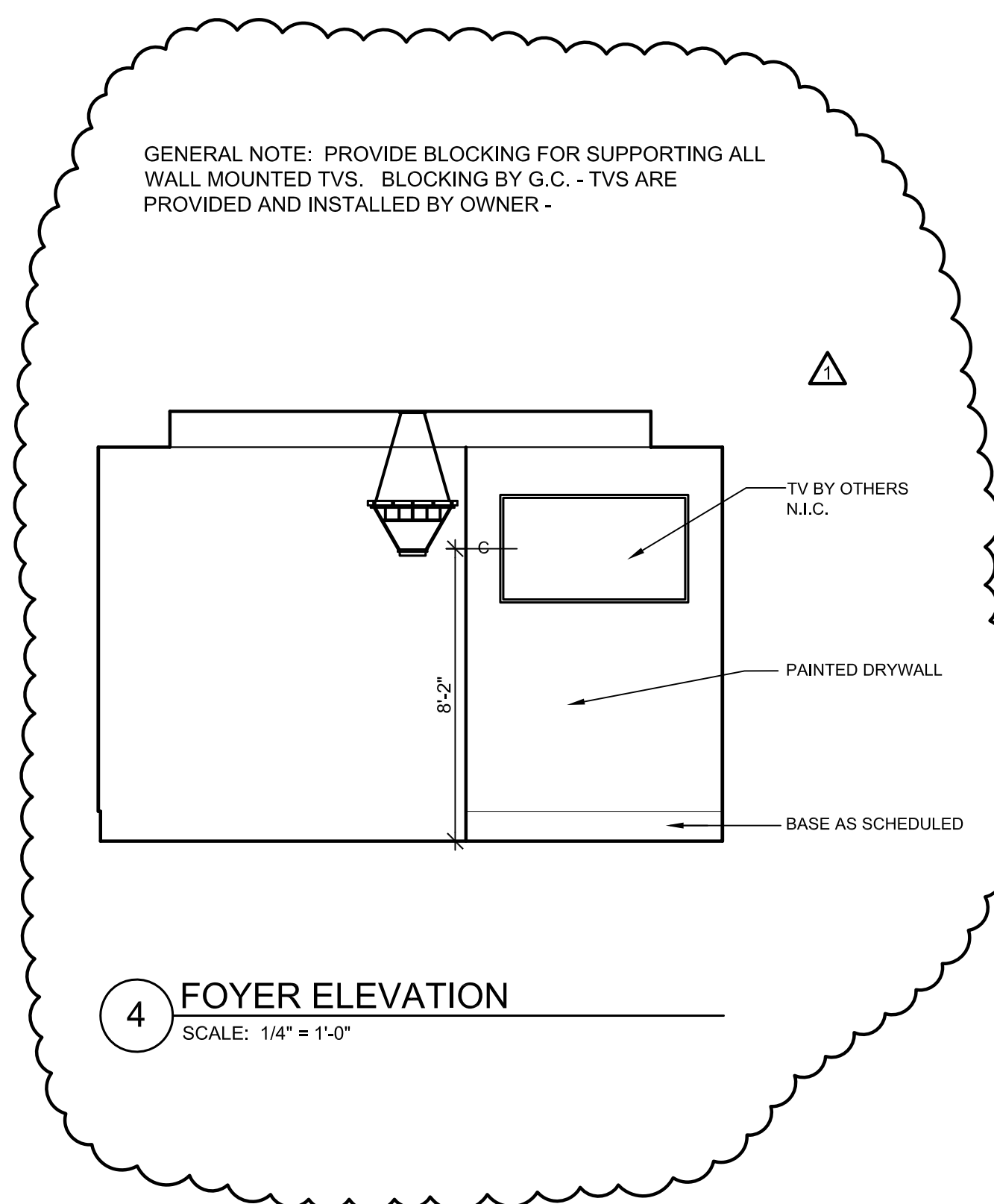
Civil Engineer
SCHRIKEL, ROLLINS
AND ASSOCIATES, INC.
1161 CORPORATE DRIVE WEST
SUITE 200
ARLINGTON, TEXAS 76006
P: 817.649.3216

**Mechanical, Electrical,
Plumbing Engineer**
MEP SYSTEMS
918 DRAGON STREET
DALLAS, TEXAS 75207
P: 214.915.0929

Structural Engineer
RONALD A. ROBERTS ASSOCIATES, INC.
2948 N. STEMMONS FREEWAY
DALLAS, TEXAS 75247
P: 214.637.6299

Kitchen Consultant
PROFITABLE FOOD FACILITIES
14026 Donoff Drive
POWAY, CALIFORNIA 92064
P: 858.748.7333

A/V Consultant
ACHIEVE AV, INC.
730 World Dr.
CEDAR HILL, TEXAS 75104
P: 214.884.5951



ADDENDUM #1 11-10-2017

No.	Date
Project No.	21538.00
Drawn	- KLH
Checked	- DIM
Approved	- KL
Engineer	- KJM

Architect

CONSTRUCTION DOCUMENTS

Title:
INTERIOR ELEVATIONS

Drawing No.
I-203

Issue Date
OCTOBER 25, 2017

© COPYRIGHT REES ASSOCIATES, INC. 2017