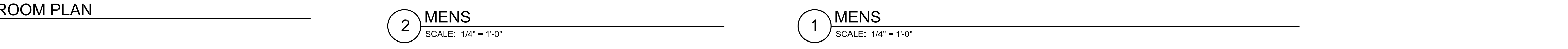
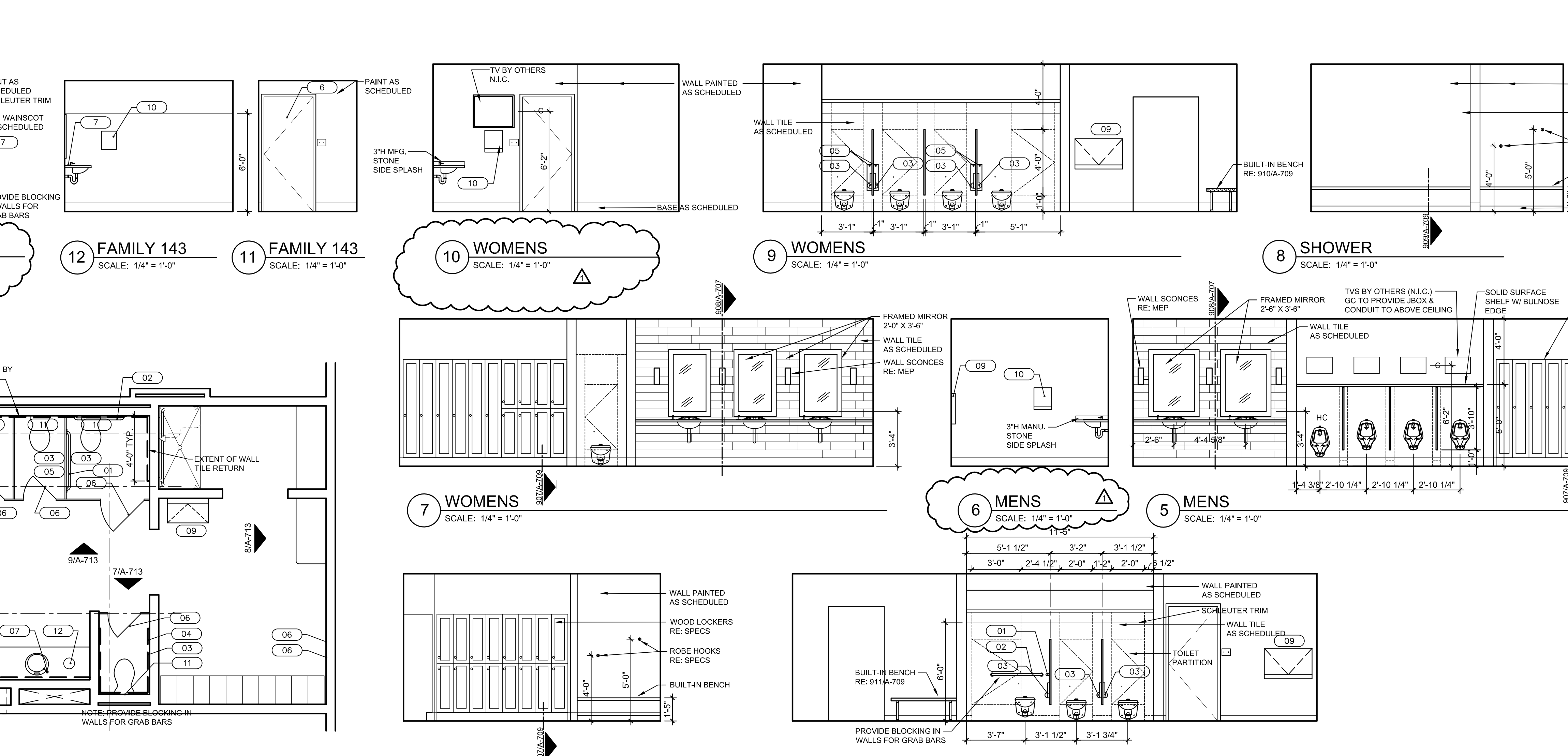
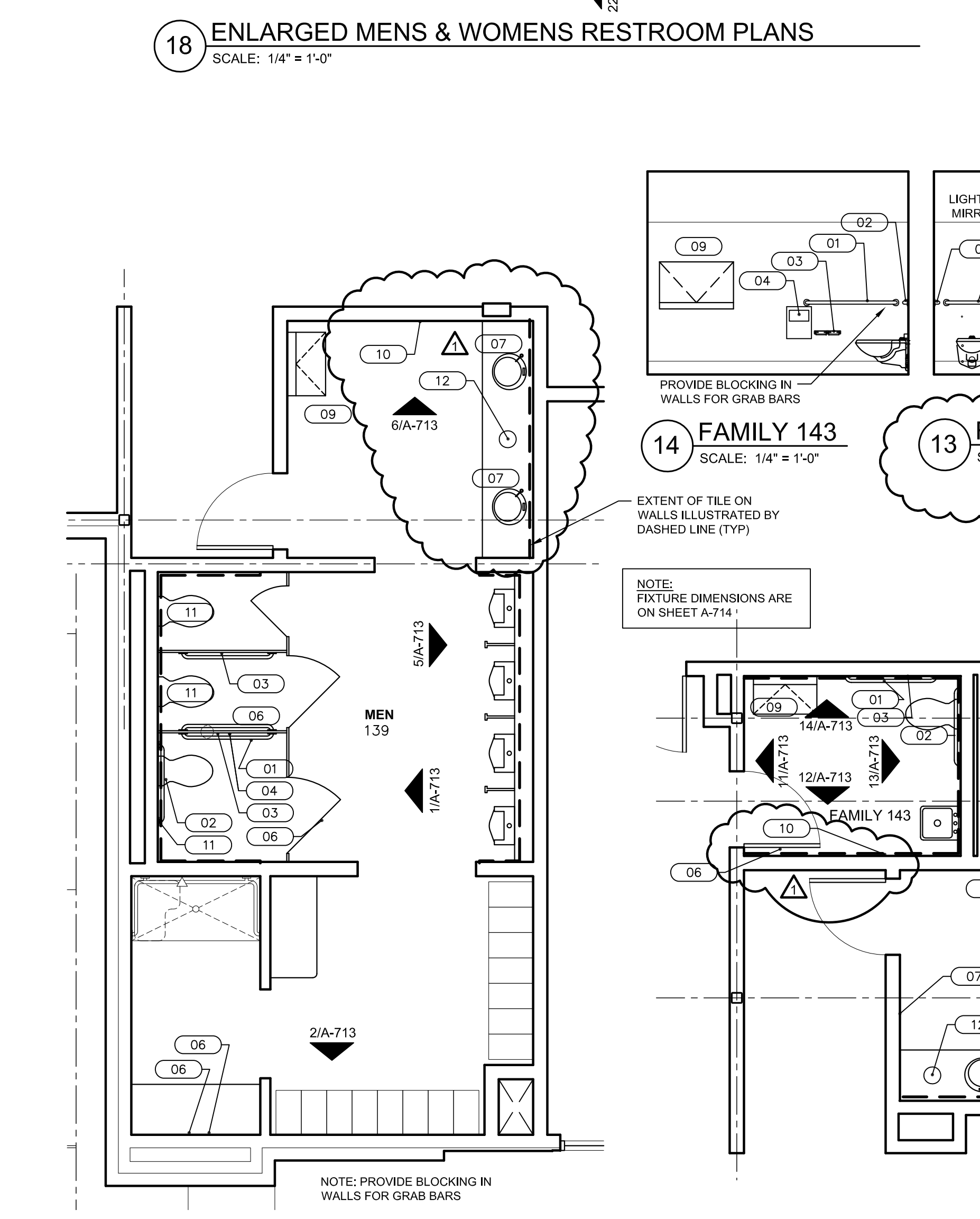
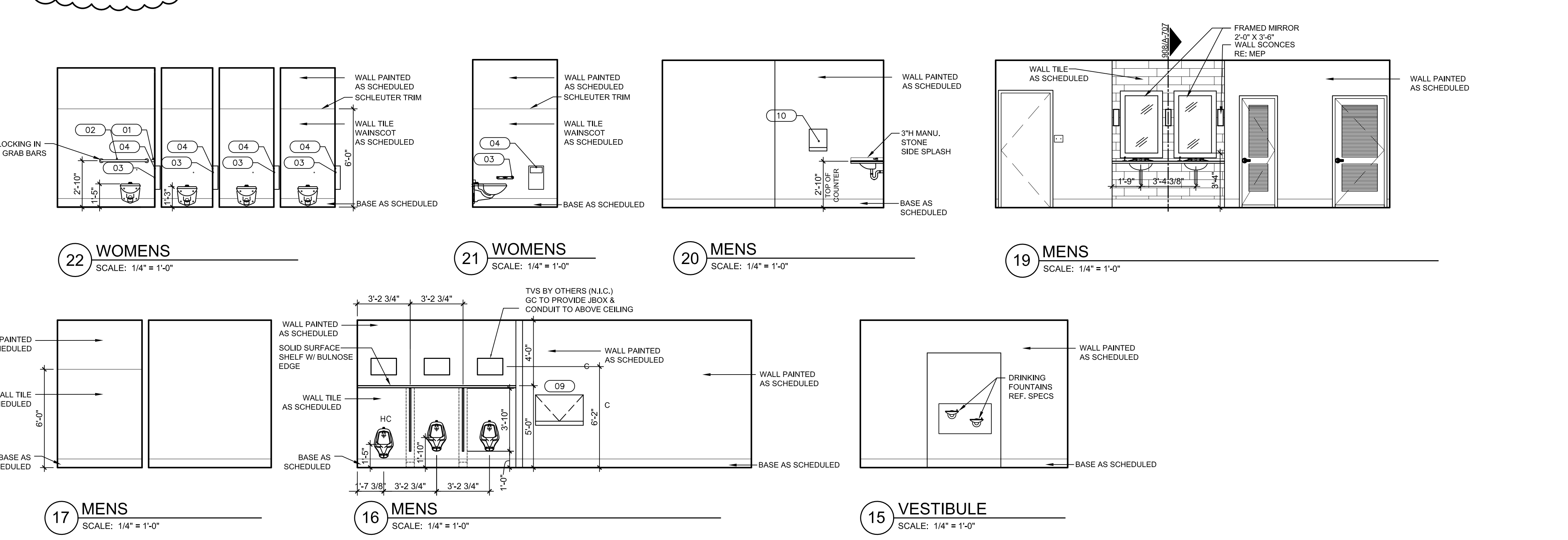
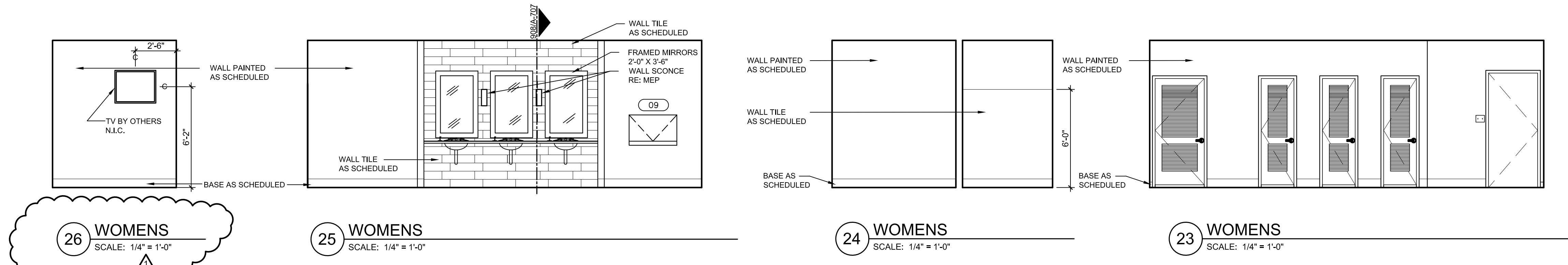
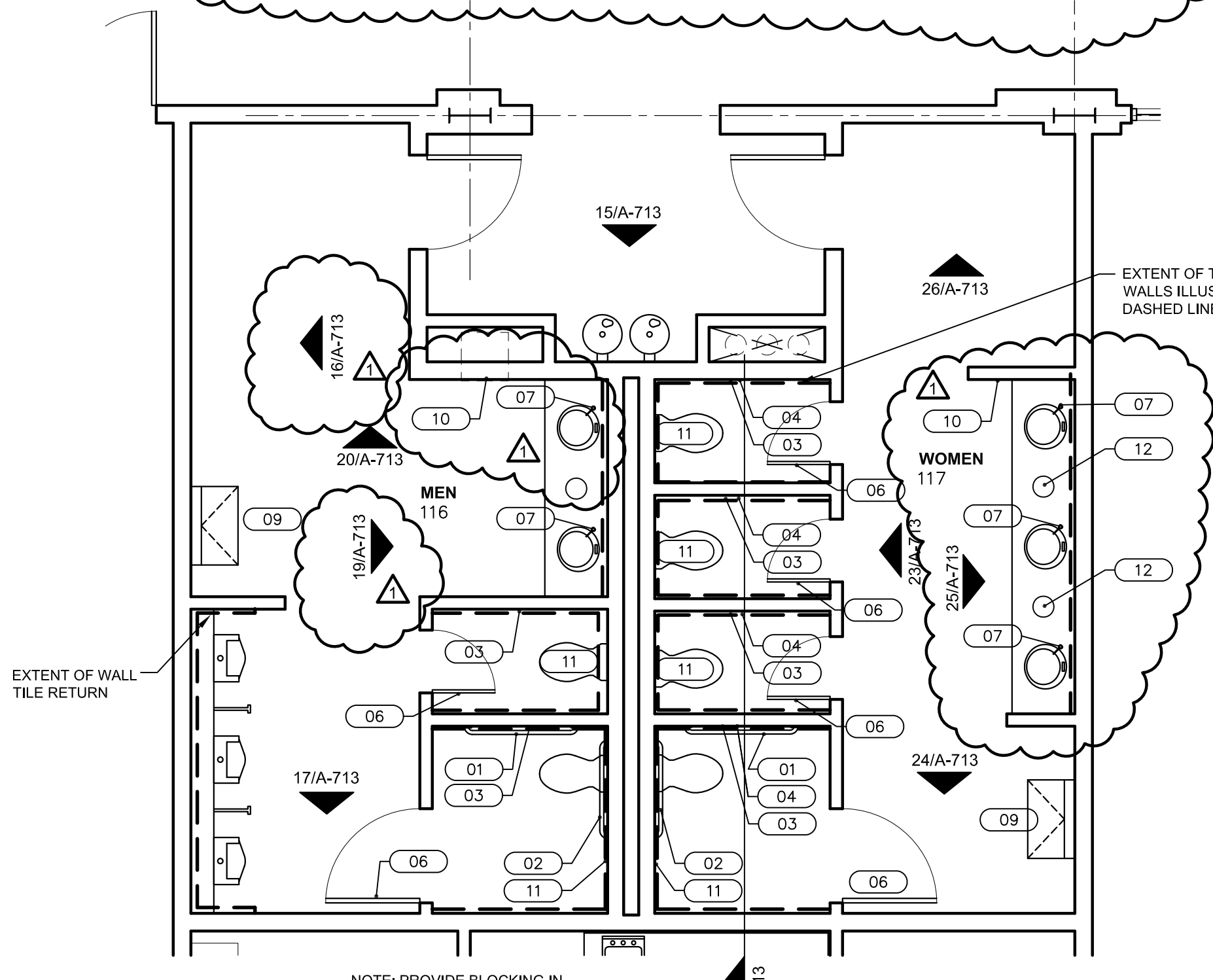


GENERAL NOTE: PROVIDE BLOCKING FOR SUPPORTING ALL WALL MOUNTED TVS. BLOCKING BY G.C. - TVS ARE PROVIDED AND INSTALLED BY OWNER -

### TOILET ACCESSORY SCHEDULE

NOTE	ACCESSORY	MOUNTING HEIGHTS-VERIFY WITH RFP
01	GRAB BAR TYPE I - MODEL B-6806 X 42"	34" A.F.F. TO CENTER LINE OF GRAB BAR
02	GRAB BAR TYPE II - MODEL B-6808 X 36"	34" A.F.F. TO CENTER LINE OF GRAB BAR
03	SURFACE MOUNTED TISSUE DISPENSER - MODEL B-2740	28" A.F.F. TO TOP
04	RECESSED SANITARY NAPKIN DISPOSAL - MODEL B-35303	34 1/2" A.F.F. TO TOP OF UNIT
05	DUAL ACCESS SANITARY NAPKIN DISPOSAL - MODEL B-354	34" A.F.F. TO TOP OF UNIT.
06	ROBE HOOK - MODEL B-671	SEE ELEVATIONS FOR HEIGHTS
07	COUNTER MOUNTED SOAP DISPENSER - MODEL B-822	
08	SURFACE MOUNTED DIAPER CHANGING STATION, KB110-SSWM	34" A.F.F. TO TOP OF OPEN TABLE (VERIFY)
09	AUTOMATIC ROLL PAPER TOWEL DISPENSER - MODEL B-29744	59 1/2" A.F.F. TO TOP OF UNIT
10	SURFACE MOUNTED TOILET SEAT COVER DISPENSER	37 1/2" A.F.F. TO CENTER LINE OF DISPENSING LINE
11	8" DIA. HOLE IN COUNTERTOP FOR TRASH	
12		

ALL PRODUCTS SPECIFIED FROM BOBRICK INDUSTRIES.



**Civil Engineer**  
SCHRIKEL, ROLLINS AND ASSOCIATES, INC.  
1161 CORPORATE DRIVE WEST SUITE 200 ARLINGTON, TEXAS 76006 P: 817.649.3216

**Mechanical, Electrical, Plumbing Engineer**  
MEP SYSTEMS  
918 DRAGON STREET DALLAS, TEXAS 75207 P: 214.915.0929

**Structural Engineer**  
RONALD A. ROBERTS ASSOCIATES, INC.  
2948 N. STEMMONS FREEWAY DALLAS, TEXAS 75204 P: 214.637.6299

**Kitchen Consultant**  
PROFITABLE FOOD FACILITIES  
14028 Donart Drive POWAY, CALIFORNIA 92064 P: 658.748.7333

**A/V Consultant**  
ACHIEVE AV, INC.  
730 Wond Dr. CEDAR HILL, TEXAS 75104 P: 214.884.9951

**ARLINGTON**  
THE AMERICAN DESIGN CITY

**CHESTER W. DITTO GOLF COURSE CLUBHOUSE**  
CITY OF ARLINGTON  
801 BROWN BLVD - ARLINGTON, TX 76011

ADDENDUM #1 11-10-2017

No.	Date
Revisions	
Project No.	21538.00
Drawn	K.H., D.W.M., K.L., K.M.
Architect	7/8/21-17
Checked	MDS
Approved	Engineer

**CONSTRUCTION DOCUMENTS**

Title: ENLARGED TOILET PLANS & ELEVATIONS

Drawing No. **A-713**

Issue Date: OCTOBER 25, 2017

© COPYRIGHT REES ASSOCIATES, INC. 2017