

**Civil Engineer**  
SCHRICKEL, ROLLINS  
AND ASSOCIATES, INC.  
1161 CORPORATE DRIVE WEST  
SUITE 200  
ARLINGTON, TEXAS 76006  
P: 817.649.3216

**Mechanical, Electrical,  
Plumbing Engineer**  
MEP SYSTEMS  
918 DRAGON STREET  
DALLAS, TEXAS 75207  
P: 214.915.0929

**Structural Engineer**  
RONALD A. ROBERTS ASSOCIATES, INC.  
2948 N. STEMMONS FREEWAY  
DALLAS, TEXAS 75207  
P: 214.637.6299

**Kitchen Consultant**  
PROFITABLE FOOD FACILITIES  
14026 DONOR DRIVE  
POWAY, CALIFORNIA 92064  
P: 858.748.7333

**A/V Consultant**  
ACHIEVE AV, INC.  
730 World Dr.  
CEDAR HILL, TEXAS 75104  
P: 214.884.5951



ADDENDUM #1 11-10-2017

No. \_\_\_\_\_ Date \_\_\_\_\_

Revisions  
Project No. 21538.00

Drawn: KLH, DIM, KL, KJM  
Checked: MDS  
Approved: \_\_\_\_\_  
Engineer

Key:  
PLAN NORTH NORTH

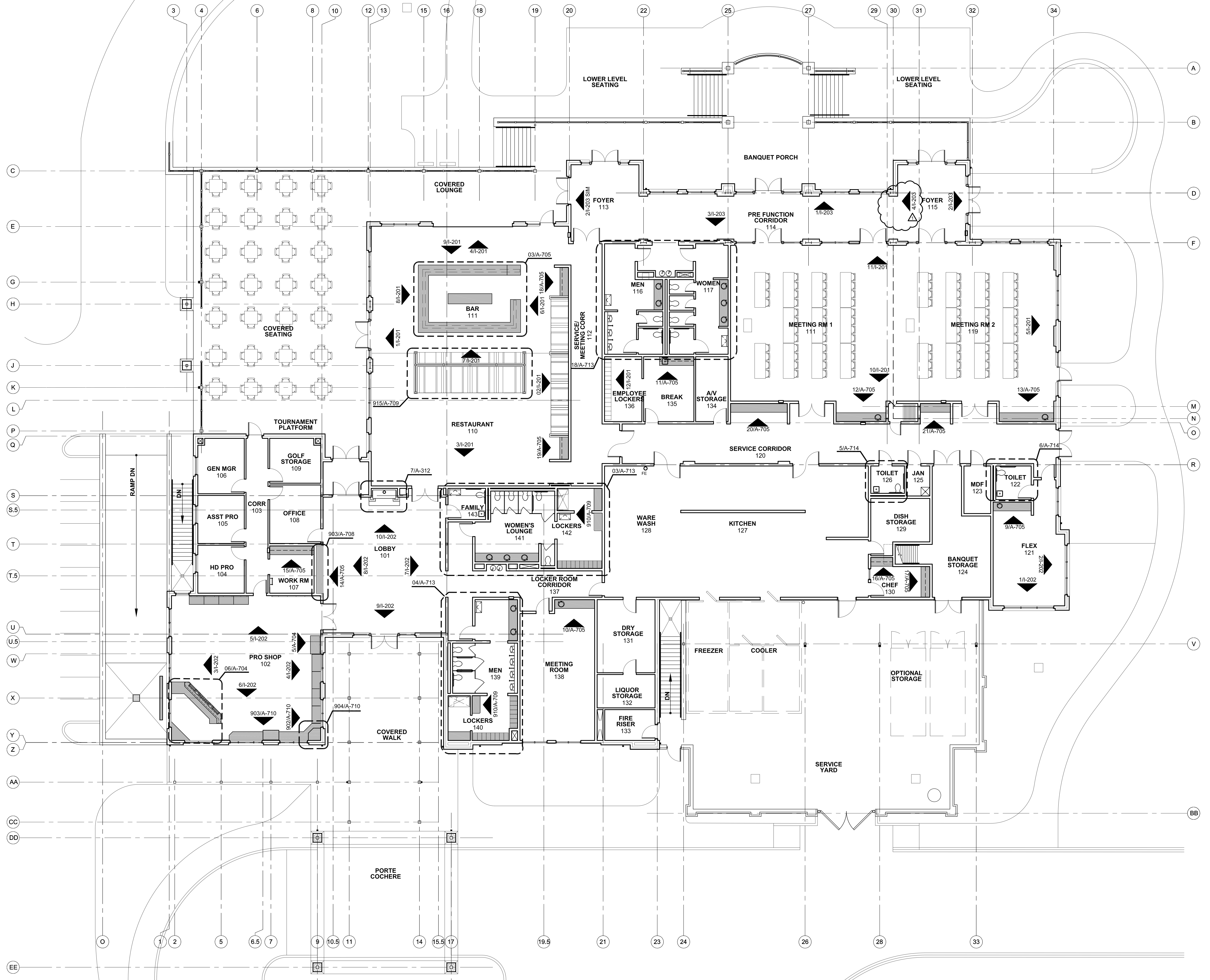
**CONSTRUCTION DOCUMENTS**

Title:  
FIRST FLOOR  
MILLWORK,  
EQUIPMENT /  
FURNITURE PLAN

Drawing No.  
**A-701**

Issue Date  
OCTOBER 25, 2017

© COPYRIGHT REES ASSOCIATES, INC. 2017



1 FIRST FLOOR PLAN - MILLWORK, EQUIPMENT AND FURNITURE  
SCALE: 3/32" = 1'-0"

ALL FREESTANDING FURNITURE IS NIC.