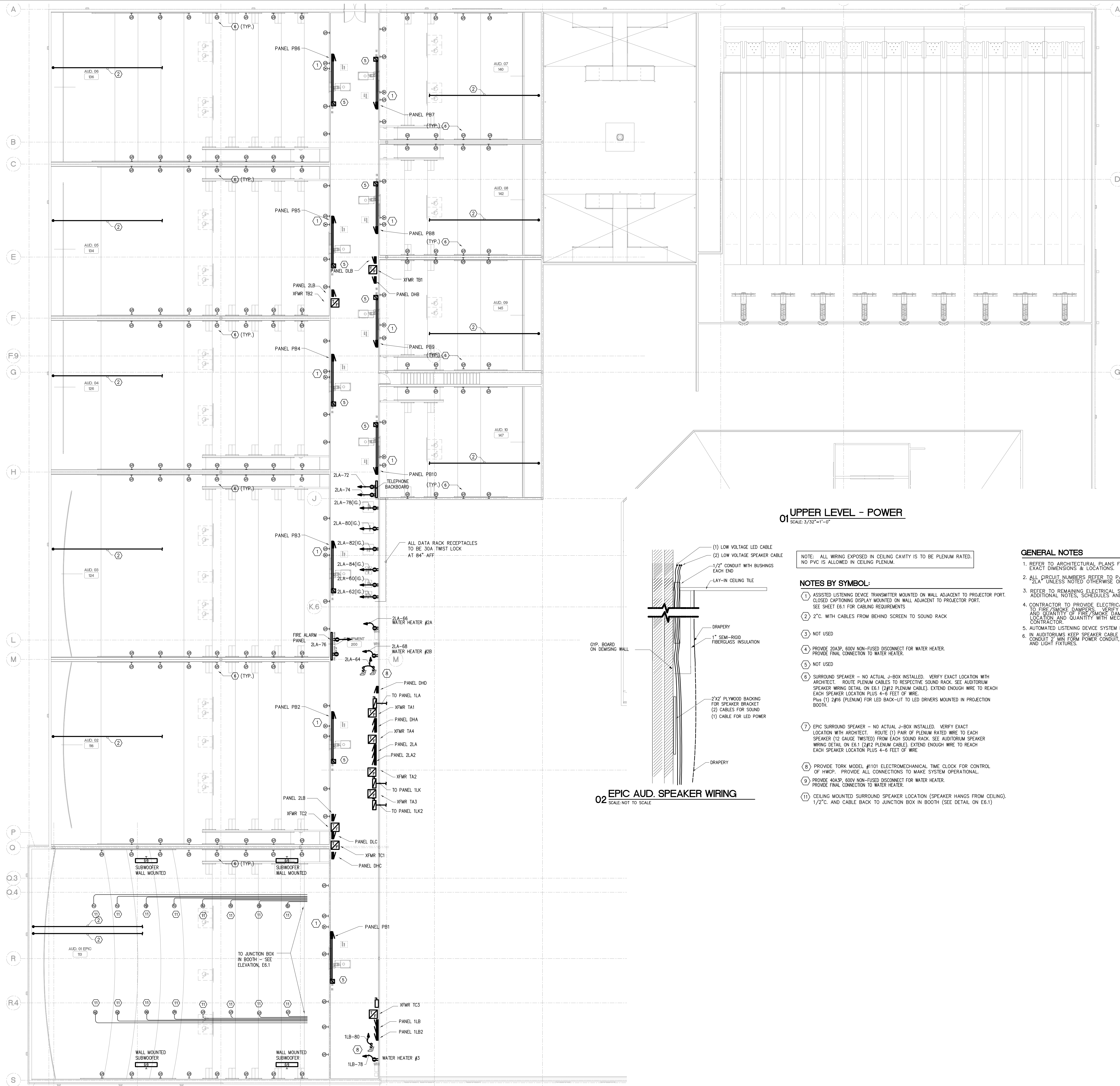
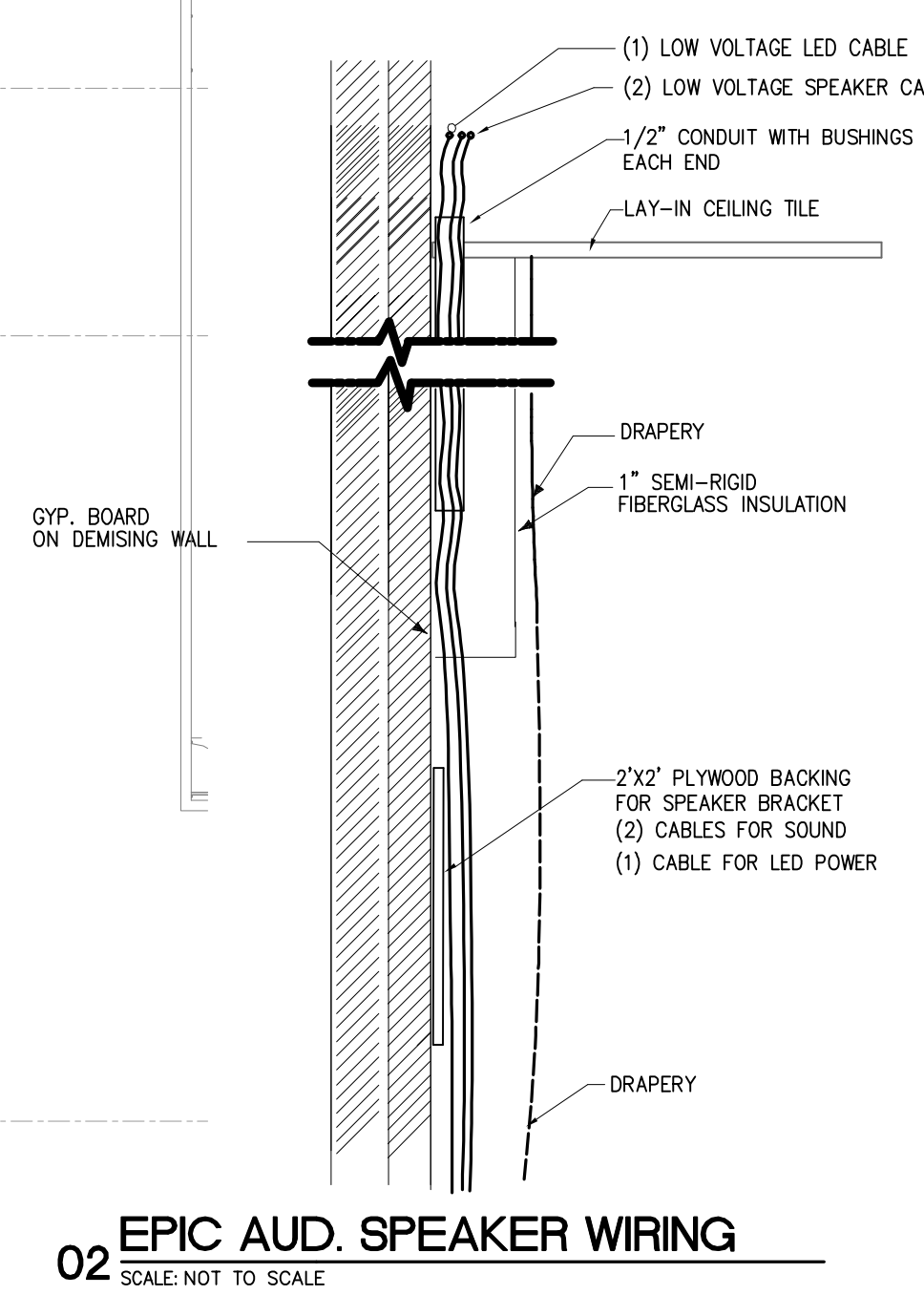


Plotted By: Dan Habetter 24 May, 2017 Drawing File: E:\Dropbox (EnviroDesign)\EnviroDesign Team Folder\Current\2017-055 Cinergy Amarillo\2017-055E32.dwg

ALL DRAWINGS AND WRITTEN MATERIAL APPEARING HEREIN CONSTITUTE ORIGINAL AND UNPUBLISHED WORK OF THE ENGINEER AND MAY NOT BE DUPLICATED, USED OR DISCLOSED WITHOUT WRITTEN CONSENT OF ENVIRODESIGN, INC. © 2017 ENVIRODESIGN, INC. ALL RIGHTS RESERVED.



**01 UPPER LEVEL - POWER**  
SCALE: 3/32"=1'-0"



NOTE: ALL WIRING EXPOSED IN CEILING CAVITY IS TO BE PLENUM RATED, NO PVC IS ALLOWED IN CEILING PLENUM.

**NOTES BY SYMBOL:**

- ① ASSISTED LISTENING DEVICE TRANSMITTER MOUNTED ON WALL ADJACENT TO PROJECTOR PORT. CLOSED CAPTIONING DISPLAY MOUNTED ON WALL ADJACENT TO PROJECTOR PORT. SEE SHEET E6.1 FOR CABLING REQUIREMENTS
- ② 2" C. WITH CABLES FROM BEHIND SCREEN TO SOUND RACK
- ③ NOT USED
- ④ PROVIDE 30A, 60V NON-FUSED DISCONNECT FOR WATER HEATER. PROVIDE FINAL CONNECTION TO WATER HEATER.
- ⑤ NOT USED
- ⑥ SURROUND SPEAKER - NO ACTUAL J-BOX INSTALLED. VERIFY EXACT LOCATION WITH ARCHITECT. ROUTE PLENUM CABLES TO RESPECTIVE SOUND RACK. SEE AUDITORIUM SPEAKER WIRING DETAIL ON E6.1 (2#12 PLENUM CABLE). EXTEND ENOUGH WIRE TO REACH EACH SPEAKER LOCATION PLUS 4-6 FEET OF WIRE. Plus (1) 2#16 (PLENUM) FOR LED BACK-LIT TO LED DRIVERS MOUNTED IN PROJECTION BOOTH.
- ⑦ EPIC SURROUND SPEAKER - NO ACTUAL J-BOX INSTALLED. VERIFY EXACT LOCATION WITH ARCHITECT. ROUTE (1) PAIR OF PLENUM RATED WIRE TO EACH SPEAKER (12 GAUGE TWISTED) FROM EACH SOUND RACK. SEE AUDITORIUM SPEAKER WIRING DETAIL ON E6.1 (2#12 PLENUM CABLE). EXTEND ENOUGH WIRE TO REACH EACH SPEAKER LOCATION PLUS 4-6 FEET OF WIRE.
- ⑧ PROVIDE TORK MODEL #101 ELECTROMECHANICAL TIME CLOCK FOR CONTROL OF HWCP. PROVIDE ALL CONNECTIONS TO MAKE SYSTEM OPERATIONAL.
- ⑨ PROVIDE 40A, 3P, 60V NON-FUSED DISCONNECT FOR WATER HEATER. PROVIDE FINAL CONNECTION TO WATER HEATER.
- ⑩ CEILING MOUNTED SURROUND SPEAKER LOCATION (SPEAKER HANGS FROM CEILING). 1/2" C. AND CABLE BACK TO JUNCTION BOX IN BOOTH (SEE DETAIL ON E6.1)

**GENERAL NOTES**

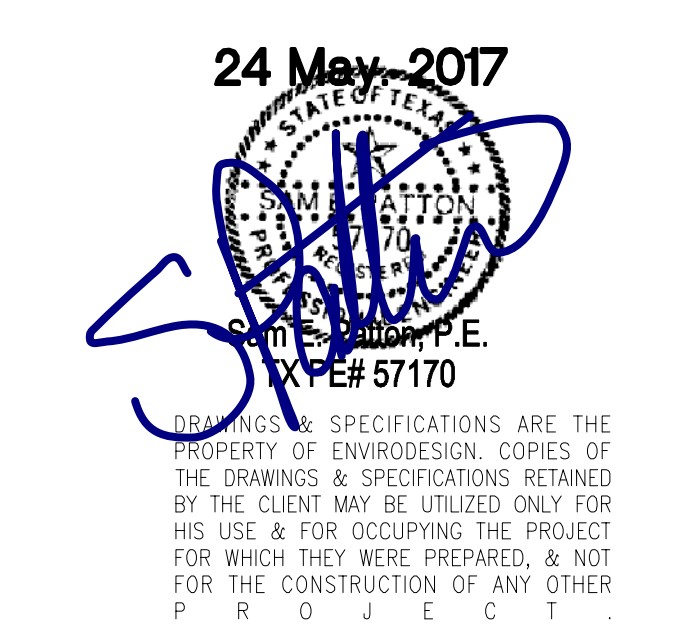
- 1. REFER TO ARCHITECTURAL PLANS FOR EXACT DIMENSIONS & LOCATIONS.
- 2. ALL CIRCUIT NUMBERS REFER TO PANEL 2LA UNLESS NOTED OTHERWISE ON PLANS.
- 3. REFER TO REMAINING ELECTRICAL SHEETS FOR ADDITIONAL NOTES, SCHEDULES AND DETAILS.
- 4. CONTRACTOR TO PROVIDE ELECTRICAL CONNECTION TO FIRE/SMOKE DAMPERS. VERIFY LOCATION AND QUANTITY OF FIRE/SMOKE DAMPERS. VERIFY LOCATION AND QUANTITY WITH MECHANICAL CONTRACTOR.
- 5. AUTOMATED LISTENING DEVICE SYSTEM BY OWNER.
- 6. IN AUDITORIUMS KEEP SPEAKER CABLE AND CONDUIT 2" MIN FROM POWER CONDUIT, J-BOXES, AND LIGHT FIXTURES.



**ARCHITECT**  
 Studio Collaborative, LLC.  
 800 Jackson St., Suite 600  
 Dallas, TX 75202  
 Rick Walker - 214.670.0050

**STRUCTURAL ENGINEER**  
 L.A. Fuess Partners Engineers  
 3333 Lee Parkway, Suite 300  
 Dallas, TX 75219  
 Jeff Tracy - 214.881.0110

**MEP ENGINEER**  
 EnviroDesign, Inc.  
 900 Ranch Rd #200 So., Suite C101-301  
 Austin, TX 78738  
 Sam Patton - 512.693.9015  
 Isaac PC Firm Number 1-3847



REV.	DATE	PERMIT ISSUE	ISSUE
5/12/17	5/12/17	PERMIT ISSUE	
5/24/17	5/24/17	ISSUE FOR BID	

**CINERGY AMARILLO**

SHEET DESCRIPTION  
**UPPER LEVEL FLOOR PLAN**  
**POWER**

2016-151  
 PROJECT NUMBER

**E3.2**  
 SHEET NUMBER