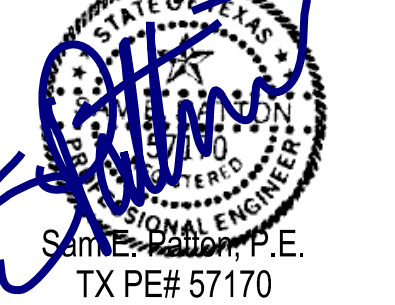


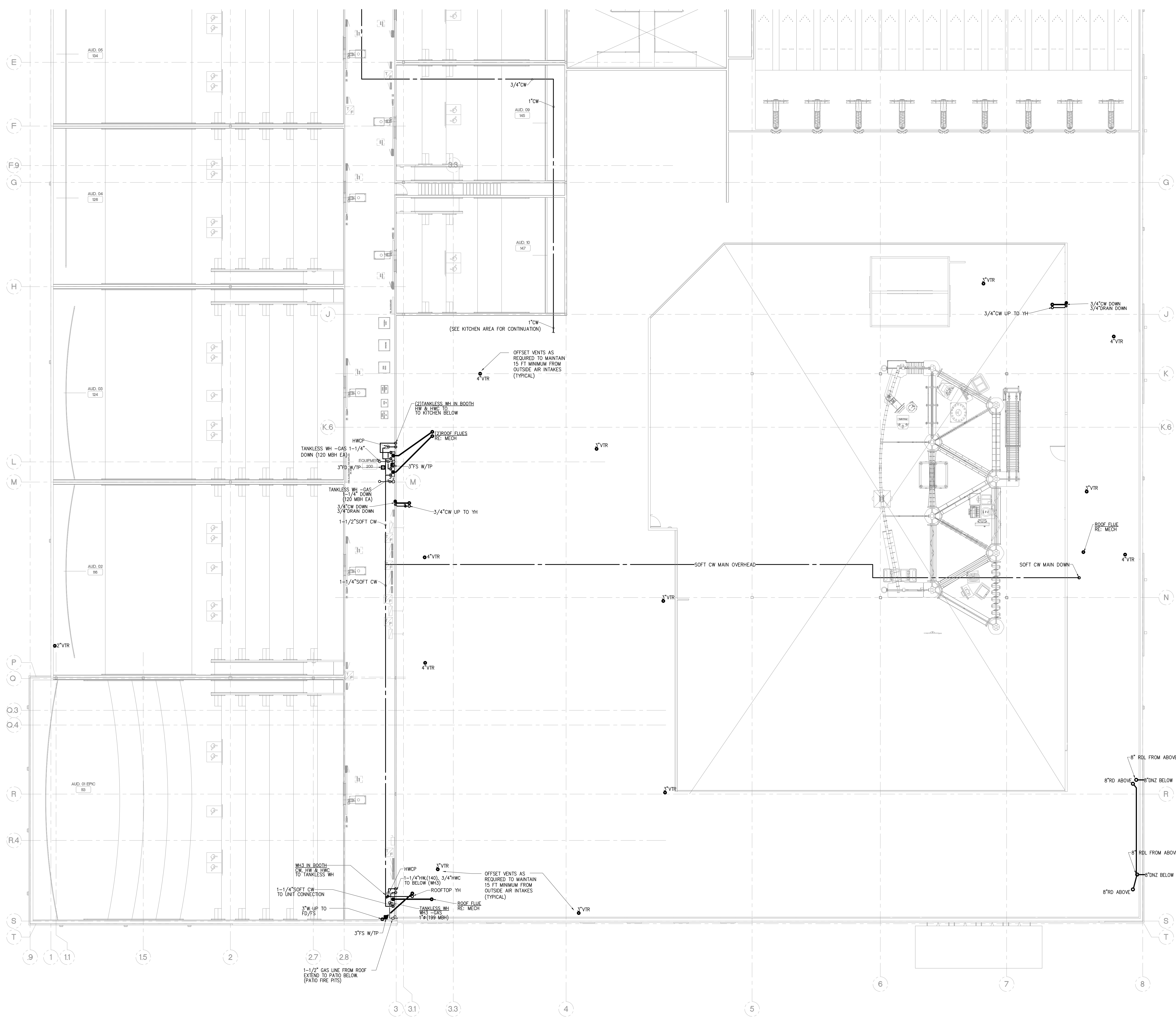
24 May 2017



DRAWINGS & SPECIFICATIONS ARE THE PROPERTY OF ENVIRODESIGN. COPIES OF THE DRAWINGS & SPECIFICATIONS RETAINED BY THE CLIENT MAY BE UTILIZED ONLY FOR HIS USE & FOR OCCUPYING THE PROJECT FOR WHICH THEY WERE PREPARED, & NOT FOR THE CONSTRUCTION OF ANY OTHER PROJECT.

Plotted By: ggrand 24 May 2017 Drawing File: F:\Dropbox (EnviroDesign)\EnviroDesign Team Folder\Current\2017-055 Cinergy Amarillo\2017-055P22a.dwg

ALL DRAWINGS AND WRITTEN MATERIAL APPEARING HEREIN CONSTITUTE ORIGINAL AND UNPUBLISHED WORK OF THE ENGINEER AND MAY NOT BE DUPLICATED, USED OR DISCLOSED WITHOUT WRITTEN CONSENT OF ENVIRODESIGN, INC. © 2017 ENVIRODESIGN, INC. ALL RIGHTS RESERVED.



01 UPPER LEVEL PART A - PLUMBING
 SCALE: 3/32"=1'-0"

PLUMBING GENERAL NOTES:
 1. NO CLEANOUTS ARE TO BE EXPOSED TO PUBLIC VIEW. EXTEND WASTE LATERAL SO THAT CLEANOUTS ARE LOCATED IN STORAGE, JANITOR'S, ETC. ROOMS

COMPLETE FIRE SPRINKLER SHOP DRAWINGS MUST BE SUBMITTED TO THE CITY FOR APPROVAL.

REV.	DATE	ISSUE
5/12/17	PERMIT ISSUE	
5/24/17	ISSUE FOR BID	

CINERGY AMARILLO
 SHEET DESCRIPTION
 UPPER LEVEL
 FLOOR PLAN - PART A
 - PLUMBING