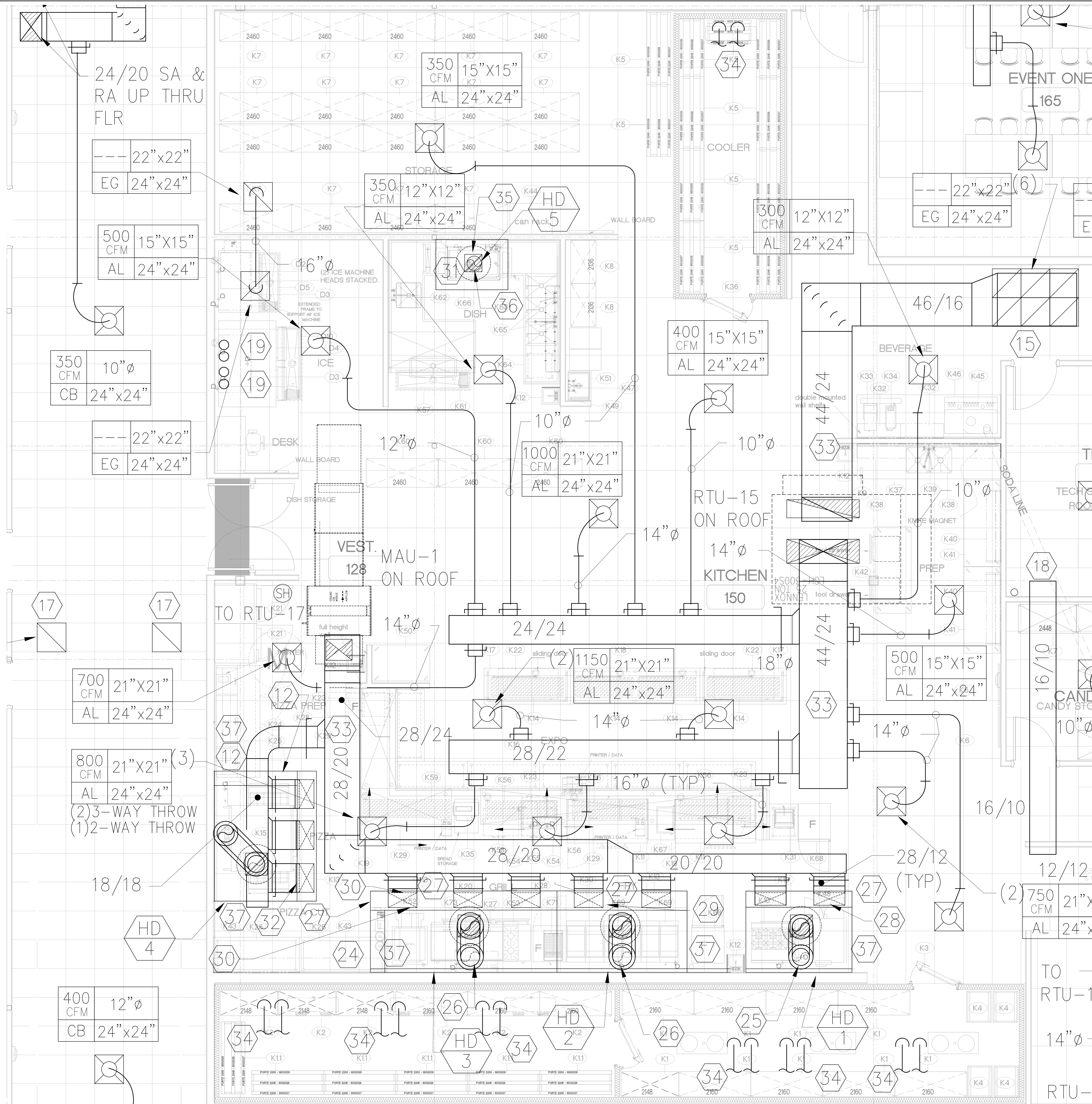


Plotted By: Owner 24 May 2017 Drawing File: J:\Dropbox (EnviroDesign)\EnviroDesign Team Folder\Current\2017-055 Cinergy Amarillo\2017-055M23.dwg

ALL DRAWINGS AND WRITTEN MATERIAL APPEARING HEREIN CONSTITUTE ORIGINAL AND UNPUBLISHED WORK OF THE ENGINEER AND MAY NOT BE DUPLICATED, USED OR DISCLOSED WITHOUT WRITTEN CONSENT OF ENVIRODESIGN, INC. © 2017 ENVIRODESIGN, INC. ALL RIGHTS RESERVED.

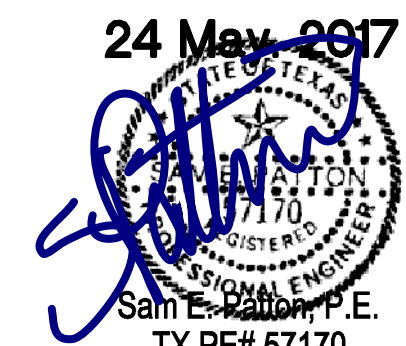


800 Jackson | Suite 500 | Dallas, TX 75202
280 Peachtree Street | Suite 500 | Atlanta, GA 30303

ARCHITECT
53 Studio Collaborative, LLC.
800 Jackson St., Suite 500
Dallas, TX 75202
Rick Walker - 214.670.0050

STRUCTURAL ENGINEER
L.A. Fuess Partners Engineers
3333 Lee Parkway, Suite 300
Dallas, TX 75219
Jeff Inay - 214.971.7010

MEP ENGINEER
EnviroDesign, Inc.
900 Ranch Rd #20 So., Suite C101-301
Austin, TX 78738
Sam Patton - 512.693.8015
Leas P.E. Firm Number 1-3847



DRAWINGS & SPECIFICATIONS ARE THE PROPERTY OF ENVIRODESIGN. COPIES OF THE DRAWINGS & SPECIFICATIONS RETAINED BY THE CLIENT MAY BE UTILIZED ONLY FOR HIS USE & FOR OCCUPANCY OF THE PROJECT FOR WHICH THEY WERE PREPARED, & NOT FOR THE CONSTRUCTION OF ANY OTHER PROJECT.

REV	DATE	ISSUE
5/12/17	PERMIT ISSUE	
5/24/17	ISSUE FOR BID	

CINERGY AMARILLO

SHEET DESCRIPTION
ENLARGED KITCHEN PLAN - MECHANICAL, 3/8" SCALE

2016-151 PROJECT NUMBER **M2.3** SHEET NUMBER