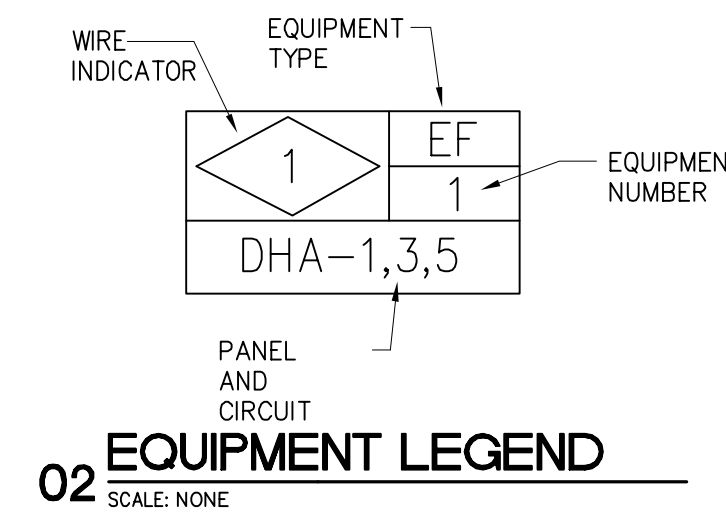


MEP ROOF PLAN - PART B
SCALE: 3/32"=1'-0"



LENNOX VERTICAL DISCHARGE ROOFTOP UNITS											
UNIT NO.	CURB DIMENSIONS	UNIT DUCT CONNECTION	UNIT DIMENSIONS	UNIT WEIGHT	CYP. BD & DUCT LINER	TOTAL WEIGHT	LENNOX UNIT MODEL NO.				
	L" x W" x H"	SUPPLY LENGTH x SUPPLY WIDTH x RETURN LENGTH x RETURN WIDTH	UNIT LENGTH x UNIT HEIGHT x UNIT WIDTH	UNIT WEIGHT	UNIT WEIGHT	UNIT WEIGHT					
3	79-3/4" x 41-1/2" x 20"	20" x 18" x 29" x 11"	85-1/4" x 35-3/8" x 45"	885 LBS.	190 LBS.	1075 LBS.	LGH-036H				
4	79-3/4" x 41-1/2" x 20"	20" x 18" x 29" x 11"	85-1/4" x 35-3/8" x 45"	1029 LBS.	190 LBS.	1219 LBS.	LGH-048H				
5	79-3/4" x 41-1/2" x 20"	20" x 18" x 29" x 11"	85-1/4" x 35-3/8" x 45"	1133 LBS.	190 LBS.	1323 LBS.	LGH-060H				
6	79-3/4" x 41-1/2" x 20"	20" x 18" x 29" x 11"	85-1/4" x 35-3/8" x 45"	1519 LBS.	190 LBS.	1709 LBS.	LGH-072H				
7.5	95-3/8" x 54-1/4" x 28"	20" x 27" x 34" x 10-1/4"	43-3/8" x 56-1/8" x 156-1/8"	1526 LBS.	235 LBS.	1761 LBS.	LGH-092H				
8.5	95-3/8" x 54-1/4" x 28"	20" x 27" x 34" x 10-1/4"	43-3/8" x 56-1/8" x 156-1/8"	1561 LBS.	235 LBS.	1796 LBS.	LGH-102H				
10	95-3/8" x 54-1/4" x 28"	20" x 27" x 34" x 10-1/4"	43-3/8" x 56-1/8" x 156-1/8"	1596 LBS.	235 LBS.	1831 LBS.	LGH-110H				
12.5	95-3/8" x 54-1/4" x 28"	20" x 27" x 34" x 10-1/4"	43-3/8" x 56-1/8" x 156-1/8"	1631 LBS.	235 LBS.	1866 LBS.	LGH-120H				
15	102" x 66-1/8" x 60"	60" x 20" x 60-1/2" x 15"	132-5/8" x 51" x 90-1/8"	2850 LBS.	415 LBS.	3265 LBS.	LGH-156H				
20	102" x 66-1/8" x 60"	60" x 20" x 60-1/2" x 15"	132-5/8" x 51" x 90-1/8"	2885 LBS.	415 LBS.	3300 LBS.	LGH-168H				
25	115-1/8" x 86-1/8" x 60"	60" x 20" x 60-1/2" x 15"	132-5/8" x 51" x 90-1/8"	3000 LBS.	415 LBS.	3415 LBS.	LGH-200H				
30	115-1/8" x 86-1/8" x 60"	60" x 20" x 60-1/2" x 15"	132-5/8" x 51" x 90-1/8"	3311 LBS.	415 LBS.	3726 LBS.	LGH-260H				

NOTES:
1. VERIFY EXACT DIMENSIONS WITH LENNOX EQUIPMENT SUBMITTAL PRIOR TO FABRICATION OF CUTTING HOLES.
2. DUCT OPENINGS IN THE ROOF DECK ARE 1/2" LARGER THAN DUCT ON EACH SIDE.
3. DUCT CONNECTION DIMENSIONS ARE SHEET METAL AND DON'T INCLUDE ACOUSTIC LINING.
4. SCHEDULE REFERS TO BOTH LGA, LGC AND LGH UNLESS OTHERWISE NOTED.
5. UNIT DIMENSIONS DO NOT INCLUDE BASE RAIL.

GENERAL NOTES

- ALL ROOF TOP UNITS TO BE INSTALLED ACCORDING TO APPROPRIATE DETAILS.
- CONVENIENCE RECEPTACLES ON ROOFTOP UNITS ARE FACTORY MOUNTED. WIRE AND POWERED BY ELECTRICAL CONTRACTOR. THE REMAINING RECEPTACLES FURNISHED WITH THE ROOFTOP UNITS WILL BE REMOVED AND BLANK COVERS INSTALLED.
- CONDENSATE TO SLOPE AT 1/8" PER FT. AND CONSTRUCTED WITH SANITARY FITTINGS. 1" MINIMUM SIZE. MAINTAIN CODE REQUIRED DISTANCE (10'-0") BETWEEN EXHAUST FANS OR VIR'S AND OUTSIDE WITH CONDUIT.
- ALL WIRING IS DIAGRAMATIC. DO NOT PENETRATE DEMISING WALLS OF AUDITORIUMS.
- THE ROOFTOP UNIT AND WIRING IN PARALLEL WITH CONTROL WIRING. CONNECT ROOFTOP UNIT PROVIDE DUCT SMOKE DETECTORS AS REQUIRED BY LOCAL AUTHORITIES. ALL SMOKE DETECTORS SHALL TO BE FURNISHED BY THE FIRE ALARM CONTRACTOR AND INSTALLED AS INDICATED ON THE MATRIX OF RESPONSIBILITY IN THE RETURN AIR DUCTS OF ALL REQUIRED MECHANICAL UNITS. REFER TO SPECIFICATIONS FOR ADDITIONAL INFORMATION. COORDINATE ALL REQUIREMENTS WITH THE FIRE ALARM CONTRACTOR. DO NOT PROVIDE SMOKE DETECTORS IN THE ROOFTOP UNITS SERVING THE LASER TAG SPACE. REFER TO NOTES UNDER ROOFTOP UNIT SCHEDULE ON M3.1.
- ALL ROOF TOP EQUIPMENT SHALL BE LABELED WITH 2" HIGH STENCIL LETTERS IN BLACK PAINT. ROOFTOP UNITS ARE TO BE EQUIPPED WITH FACTORY MOUNTED DISCONNECT SWITCHES (BREAKERS).
- MAINTAIN CODE REQUIRED DISTANCE (10'-0") BETWEEN EXHAUST FANS OR VIR'S AND OUTSIDE AIR INTAKES OF ROOFTOP UNITS.
- FACTORY MOUNTED TERMINAL STRIP LOCATED INSIDE THE COMPRESSOR COMPARTMENT OF WITH CONTROL WIRING TO SENSOR IN SPACE SERVED. REFER TO RISER AND DETAILS.
- ATCS OUTSIDE AIR SENSOR MOUNTED PER ATCS DETAILS. EXTEND LOW VOLTAGE CONTROL CABLE TO PANEL LOCATED IN THE BOOTH.
- ALL ROOF TOP EQUIPMENT SHALL BE LABELED WITH 2" HIGH STENCIL LETTERS IN BLACK PAINT AND SHALL INCLUDE UNIT NO. AND AREA SERVED. IE: RTU-1 = AUD; EF-P1 = AUD; FANS CONTROLLED BY SWITCH RATED BREAKER IN 'PB' PANEL.
- ALL DISCONNECT SWITCHES TO BE FUSED AND WEATHERPROOF. FUSES TO BE AS PER MANUFACTURER'S INSTRUCTIONS AND TO SUIT ACTUAL UNIT INSTALLED.
- CURB FOR ROOF PENETRATION BY DUCTWORK TO BE PROVIDED BY MECHANICAL CONTRACTOR. REFER TO ARCHITECTURAL DRAWINGS FOR DETAILS.
- WIRE AND CONDUIT SIZES ARE MINIMUM. THE CONTRACTOR SHALL UPSIZE WIRING REQUIRED TO SATISFY THE NEC SIX MINIMUM VOLTAGE DROP.
- ELECTRICAL CONTRACTOR TO WIRE ALL MOTORIZED DAMPERS TO EXHAUST FANS (TYP.)

NOTES BY SYMBOL

- RTU CONDENSATE DRAIN BY PC REFER TO DETAIL MEP1.2/08
- REFRIGERATION EQUIPMENT PLATFORM. REFER TO STRUCTURAL DRAWINGS FOR EXACT LOCATION. REFER TO DETAIL FOR ADDITIONAL INFORMATION.
- CONVENIENCE RECEPTACLES FURNISHED WITH ROOFTOP UNITS. WIRING AND POWERED BY ELECTRICAL CONTRACTOR. OUTLET TO BE GFI & WP. ON ROOFTOP UNITS WHERE NO RECEPTACLE IS INDICATED, REMOVE FACTORY MOUNTED RECEPTACLE AND INSTALL GASKETED BLANK COVER ON BOX.
- BAROMETRIC RELIEF HOOD. REFER TO DETAIL FOR DUCT OPENING.
- REFRIGERANT PIPING ROUTED CONCEALED DOWN TO AC BELOW.
- MOUNT ACCU ON 16" HIGH INSULATED ROOF CURB ON 1/2" FIBERGLASS KINETICS PADS.
- WEATHERPROOF JUNCTION BOX FOR SIGNAGE. VERIFY EXACT LOCATION AND POWER REQUIREMENTS WITH SIGNAGE CONTRACTOR PRIOR TO INSTALLATION.
- WIRE AND POWER BY ELECTRICAL CONTRACTOR. OUTLET TO BE GFI & WP.
- MECHANICAL CONTRACTOR SHALL INSTALL LENNOX FLUE EXTENSION. INSTALL PER MANUFACTURER'S INSTALLATION INSTRUCTIONS.
- 4" C. WITH WEATHERHEAD FOR SATELLITE CABLES.
- 3/8" & 1/2" GND. IN 3/4" C.
- 3/8" & 1/2" GND. IN 3/4" C.
- 3/8" & 1/2" GND. IN 1".
- 3/8" & 1/2" GND. IN 1-1/4" C.
- 3/8" & 1/2" GND. IN 1-1/4" C.
- 2#12 & 1#12 GND. IN 3/4" C. TO SWITCH IN CONCESSION AREA.
- 2#12 & 1#12 GND. IN 3/4" C. TO SWITCH IN CONCESSION AREA.
- 2#12 & 1#12 GND. IN 3/4" C. TO PROJECTOR 'PB' PANEL. CONTROLLED VIA SWITCH IN CONCESSION AREA.
- 2#12 & 1#12 GND. IN 3/4" C. THROUGH ATCS.
- 2#12 & 1#12 GND. IN 1/2" C. WITH CONTROL WIRES TO WALK-IN COOLER.
- 3/8" & 1/2" GND. IN 1/2" C. WITH CONTROL WIRES TO WALK-IN FREEZER.

REV	DATE	ISSUE
5/12/17		PERMIT ISSUE
5/24/17		ISSUE FOR BID