

MATRIX OF RESPONSIBILITY
Amarillo - Cinergy Entertainment
Table with columns: MEPSYSTEM DESCRIPTION, EQUIPMENT, CHECK OUT BY, FURNISHED BY, CHECK OUT BY, FURNISHED BY, CHECK OUT BY, FURNISHED BY, CHECK OUT BY, FURNISHED BY, CHECK OUT BY, FURNISHED BY, REMARKS.

Cinergy Amarillo

MEP Shop Drawings Log

Specifications require all submittals within 45 days of contract award

All shop drawings to be electronic: one pdf file for each cut sheet submittal, AutoCAD DWG files for sprinkler and fire alarm drawings. One email per submittal.

Trade Shop Drawing
Table with columns: Trade, Shop Drawing, GC Submittal Number. Includes categories: Sprinklers, Plumbing, HVAC, Electrical.

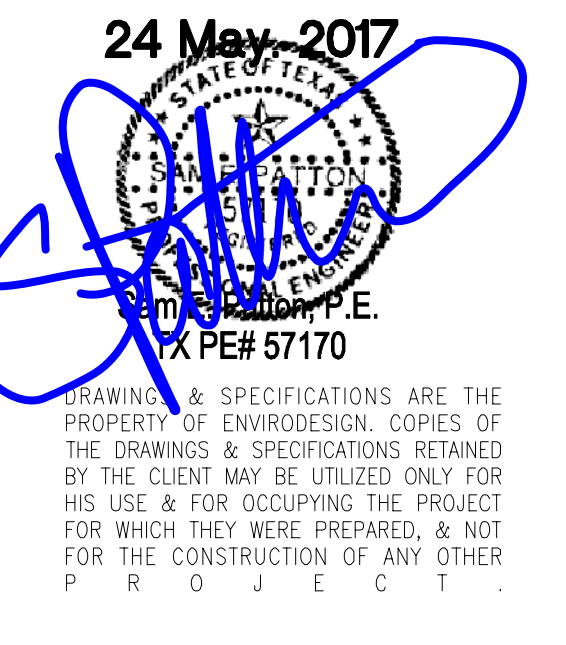
MECHANICAL LEGEND

Table with columns: SYMBOL, DESCRIPTION. Lists various mechanical symbols and their corresponding descriptions, such as floor clean out, wall clean out, domestic cold water, etc.

ELECTRICAL LEGEND

Table with columns: SYMBOL, DESCRIPTION. Lists various electrical symbols and their corresponding descriptions, such as 2x4 fluorescent fixture, 2x4 fluorescent fixture (emergency circuit), etc.

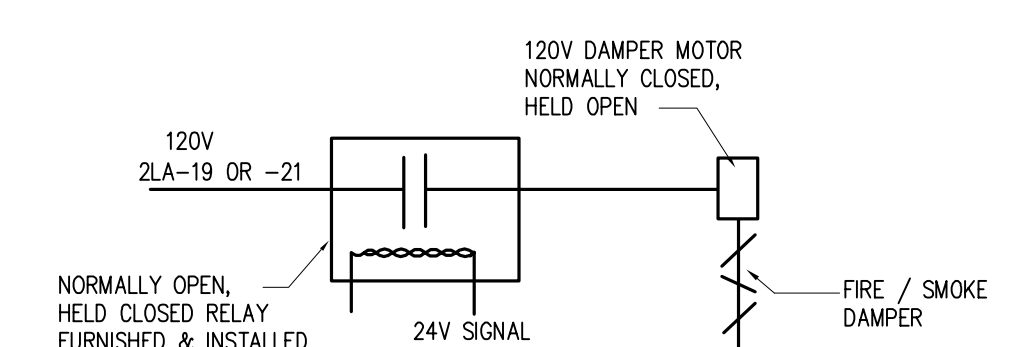
5G Studio Collaborative, LLC
800 Jackson | Suite 500 | Dallas, TX 75202
260 Peachtree Street | Suite 500 | Atlanta, GA 30303
ARCHITECT
50 Studio Collaborative, LLC.
800 Jackson St., Suite 500
Dallas, TX 75202
Rick Walker - 214.670.0050
STRUCTURAL ENGINEER
L.A. Fuess Partners Engineers
3333 Lee Parkway, Suite 300
Dallas, TX 75219
Jeff Irby - 214.841.17010
MEP ENGINEER
EnviroDesign, Inc.
900 Ranch Rd 820 So., Suite C101-301
Austin, TX 78738
Sam Patton - 512.693.8015
Fax 512.771.10847



BID ALTERNATE MEP A
CONTRACTORS SHALL PROVIDE ADDED REDUCTION TO FURNISH AND INSTALL LENNOX LANDMARK ROOFTOP UNITS IN LIEU OF LENNOX EMERGENCE RTUs AND PROVIDE THE FOLLOWING:

ME GENERAL NOTES

- 1. READ THE SPECIFICATIONS. SUBMITTALS ARE REQUIRED.
2. IN THE EVENT OF CONFLICT OR DISCREPANCIES, CALL THE ENGINEER (SAM PATTON) AS SOON AS POSSIBLE AT (512)693-8015.
3. THE HVAC AND ELECTRICAL SYSTEMS ARE BASED ON LENNOX RTUs.
4. CONTRACTOR TO SATISFY ALL LOCAL REQUIREMENTS FOR SECURING ROOFTOP EQUIPMENT.
5. NO PVC CONDUIT SHALL BE ROUTED IN RETURN AIR PLENUMS.
6. THE SUBCONTRACTORS SHALL COORDINATE WORK IN THE CEILING SPACES. PRIORITIES SHALL BE AS FOLLOWS: LIGHTING, HVAC, SPRINKLERS.
7. IN THE EVENT OF CONFLICTS BETWEEN THE DRAWINGS AND THE SPECIFICATIONS, THE HIGHER COST AND GREATER QUANTITY SHALL TAKE PRECEDENCE.
8. REFER TO THE ARCHITECTURAL SPECIFICATIONS FOR THE OWNER FURNISHED EQUIPMENT AND THE ASSOCIATED SCOPE OF WORK.
9. ANSUL SYSTEM AND ALL INTERCONNECTED CONTROL SYSTEMS SHALL BE MONITORED SEPARATELY FOR FIRE TROUBLE, AND SUPERVISORY CONDITIONS PER NFPA 72 3-11.2.1.



IF REQUIRED BY THE AUTHORITY HAVING JURISDICTION THE FOLLOWING SHALL OCCUR:
1. SMOKE DAMPER SHALL BE CLOSED BY ACTUATION OF A SMOKE DETECTOR LISTED IN ACCORDANCE WITH THE FIRE CODE AND ONE OF THE FOLLOWING APPLICABLE METHODS:
A. WHERE A DAMPER IS INSTALLED WITHIN A DUCT, A SMOKE DETECTOR SHALL BE INSTALLED IN THE DUCT WITHIN 5 FEET OF THE DAMPER WITH NO AIR OUTLETS OR INLETS BETWEEN THE DETECTOR AND THE DAMPER. THE DETECTOR SHALL BE LISTED FOR THE AIR VELOCITY, TEMPERATURE AND HUMIDITY ANTICIPATED AT THE POINT WHERE IT IS INSTALLED.
B. WHERE A DAMPER IS INSTALLED WITHIN AN UNDUCTED OPENING IN A WALL, A SPOT-TYPE DETECTOR LISTED FOR RELEASING SERVICE SHALL BE INSTALLED 5 FEET HORIZONTALLY FROM THE DAMPER.
C. WHERE A DAMPER IS INSTALLED IN A CEILING, A SPOT-TYPE DETECTOR LISTED FOR RELEASING SERVICE SHALL BE INSTALLED ON THE CEILING WITHIN 5 FEET OF THE DAMPER.
NOTE: ELECTRICAL CONTRACTOR SHALL WIRE ALL FIRE SMOKE DAMPERS. REFER TO MECHANICAL DRAWINGS FOR QUANTITIES AND LOCATIONS. ELECTRICAL CONTRACTOR TO FURNISH & INSTALL LOCAL SMOKE DETECTOR TO ACTIVATE F/S DAMPER AS REQUIRED BY THE GOVERNING AUTHORITY. ALSO APPLIES TO SMOKE DAMPERS.

Table with columns: REV, DATE, ISSUE. Shows revision history for 5/12/17 and 5/24/17.

NOTE 1. ALL POWER WIRING, CONDUIT AND POWER TERMINATIONS TO BE FURNISHED AND INSTALLED BY THE ELECTRICAL CONTRACTOR.
NOTE 2. UNLESS SPECIFICALLY NOTED OTHERWISE, ALL LOW VOLTAGE WIRING AND CONDUIT SHALL BE FURNISHED AND INSTALLED BY THE ELECTRICAL CONTRACTOR.
NOTE 3. LEGEND: GC - GC'S ELECTRICAL CONTRACTOR; PC - GC'S MECHANICAL CONTRACTOR; MC - GC'S PLUMBING CONTRACTOR; ATCS - GC'S AUTOMATIC CONTROL SYSTEM CONTRACTOR.
NOTE 4. IN THE EVENT OF CONFLICTS BETWEEN THIS LIST AND THE DRAWINGS/SPECIFICATIONS, THIS MATRIX SHALL TAKE PRECEDENCE.
NOTE 5. IT SHALL BE THE CONTRACTOR'S RESPONSIBILITY TO RECEIVE, OFF-LOAD, STORE, AND DISPOSE OF DEBRIS, INSURE, CARRY UP, AND SET IN PLACE ALL ITEMS AND EQUIPMENT FURNISHED BY OTHERS UNLESS SPECIFICALLY NOTED OTHERWISE.
NOTE 6. ALL CONDUIT, JUNCTION BOXES, WIREWAYS, ETC. SHALL BE FURNISHED AND INSTALLED BY THE ELECTRICAL CONTRACTOR.
NOTE 7. UNLESS SPECIFICALLY NOTED OTHERWISE ABOVE, ALL MATERIALS AND EQUIPMENT SHALL BE FURNISHED AND INSTALLED BY CONTRACTOR.
NOTE 8. PROVIDE PULL STRING IN ALL EMPTY CONDUITS.
NOTE 9. MAN TELEPHONE CONDUIT WITH 50 PAIR CABLE FROM SITE TELEPHONE SERVICE TO TELEPHONE BACKBOARD BY EC.
NOTE 10. 3" PVC CHASE FROM CO2 ROOM TO CONCESSION WORKROOM BY PLUMBING CONTRACTOR.
NOTE 11: 1ST YEAR LABOR WARRANTY BY CONTRACTOR - REFER TO SPECIFICATIONS.
NOTE 12: IN THE EVENT THAT THE PROJECT IS BID AS A UNION PROJECT, THE TRADE CONTRACTOR IS TO BE RESPONSIBLE (SHALL BE INCLUDED IN THE COST) FOR EMPLOYING THE PROPER TRADESMAN PER UNION JURISDICTION. THE CONTRACTORS ARE ALSO RESPONSIBLE FOR TAKING WHATEVER MEASURES THAT MAY BE NECESSARY, INCLUDING COMPOSITE CREWS TO SETTLE ANY LABOR DISPUTES AND INSURE JOB CONTINUITY AT NO ADDITIONAL COST TO THE CINERGY. SHOULD QUESTIONS OF UNION JURISDICTION ARISE, THE CONTRACTOR SHALL IMMEDIATELY TAKE STEPS TO SETTLE SUCH DISPUTES AND WILL USE SUCH LABOR AS MAY BE DETERMINED TO HAVE JURISDICTION, AT NO ADDITIONAL COST TO THE CINERGY OR CONSTRUCTION MANAGER. SHOULD HE FAIL TO TAKE EXPEDITIOUS ACTION, HE WILL BE RESPONSIBLE FOR TIME LOST AND MONETARY DAMAGES BECAUSE OF DELAYS ARISING FROM SUCH DISPUTES. IN THE ABOVE MATRIX, WHERE THE EQUIPMENT, INSTALLATION, WIRING INSTALLATION, OR FINAL WIRE CONNECTION IS NOTED AS BEING BY OTHER THAN A TRADE CONTRACTOR, THE CONTRACTOR SHALL EITHER INCLUDE THE COST OF THAT WORK OR SHALL INCLUDE THE COST OF STANDBY TIME SO THE WORK MAY BE PERFORMED BY OTHERS.

02 FIRE SMOKE DAMPER WIRING DETAIL

CINERGY AMARILLO
SHEET DESCRIPTION
MEP SYMBOLS, NOTES, DETAILS
AND MATRIX OF RESPONSIBILITY