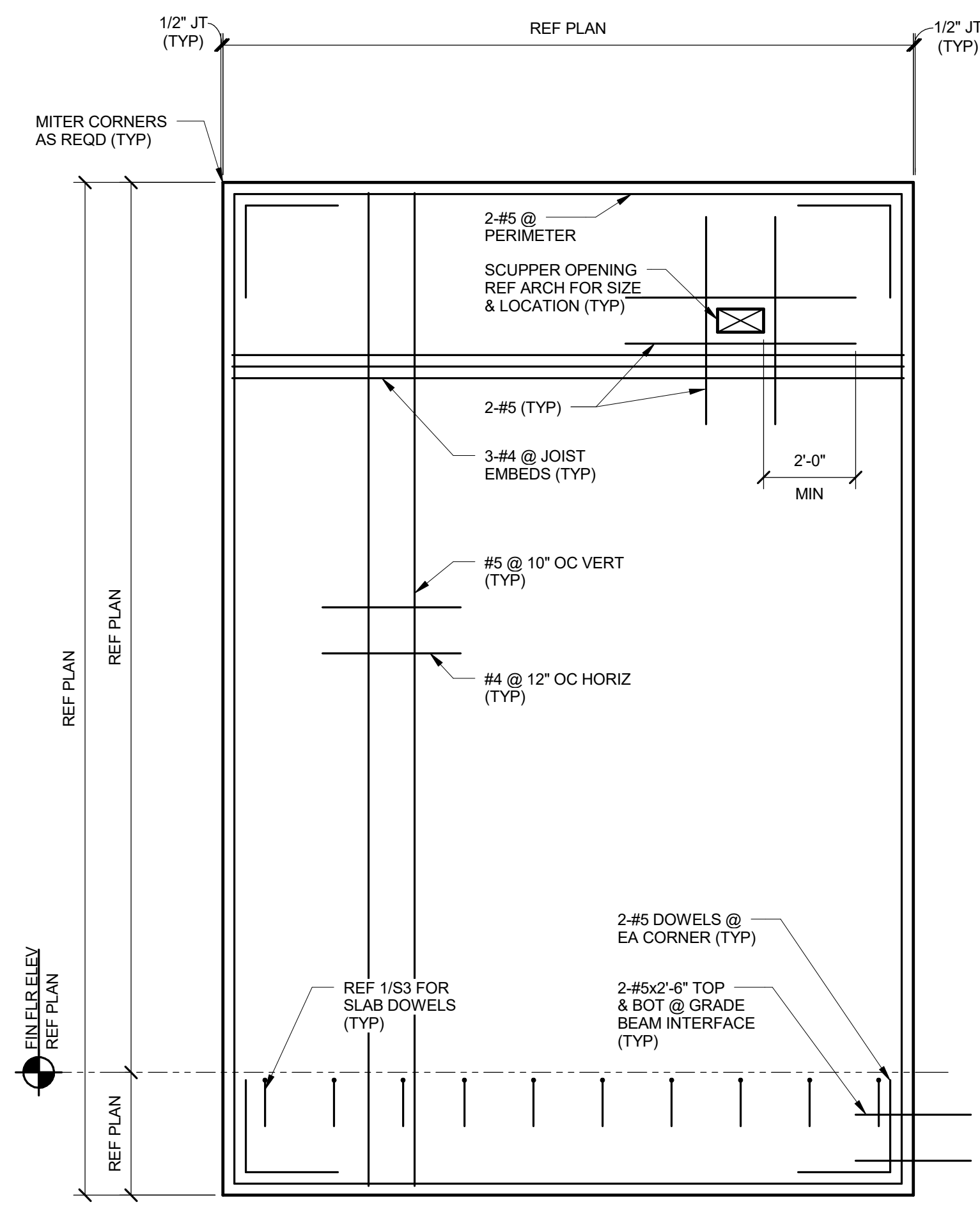




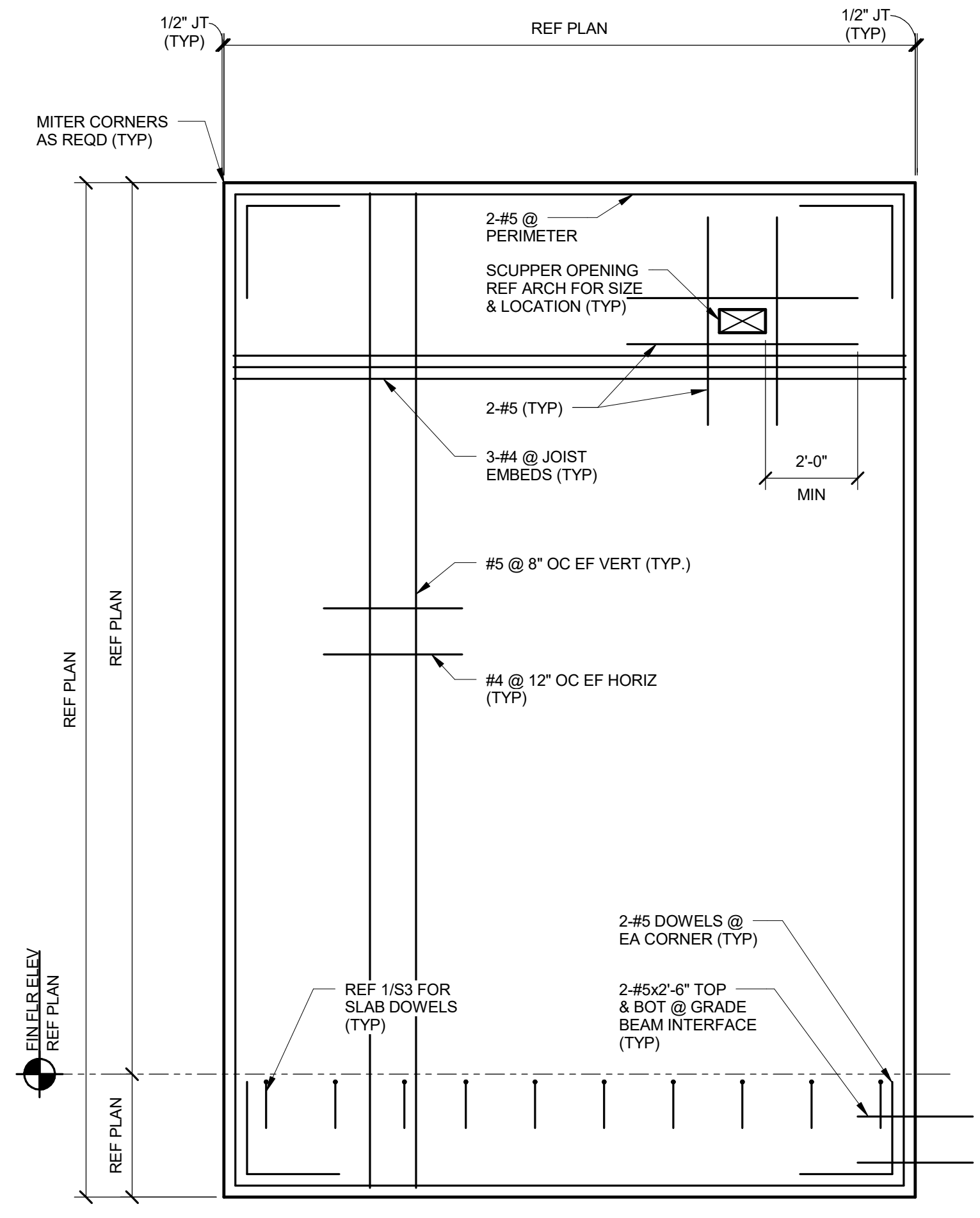
ARCHITECT
SG Studio Collaborative, LLC.
800 Jackson St., Suite 500
Dallas, TX 75202
(CONTACT)

STRUCTURAL ENGINEER
L.A. Fuess Partners
333 Lee Parkway, Suite 300
Dallas, TX 75219
(CONTACT)

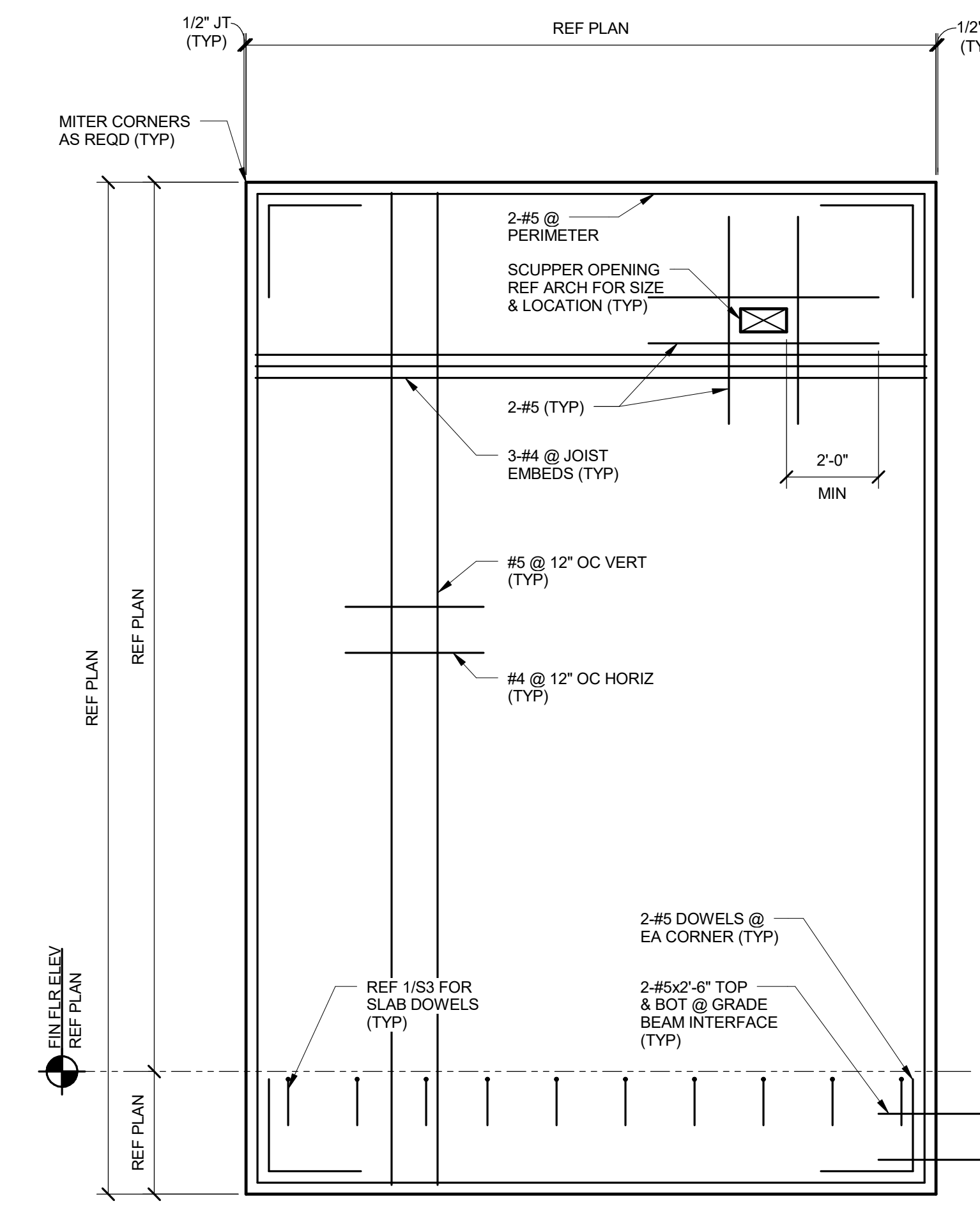
MEP ENGINEER
Root Engineering Services
43 FM 3356
Van Alstyne, TX 75495
Adam Harris 903.375.3303



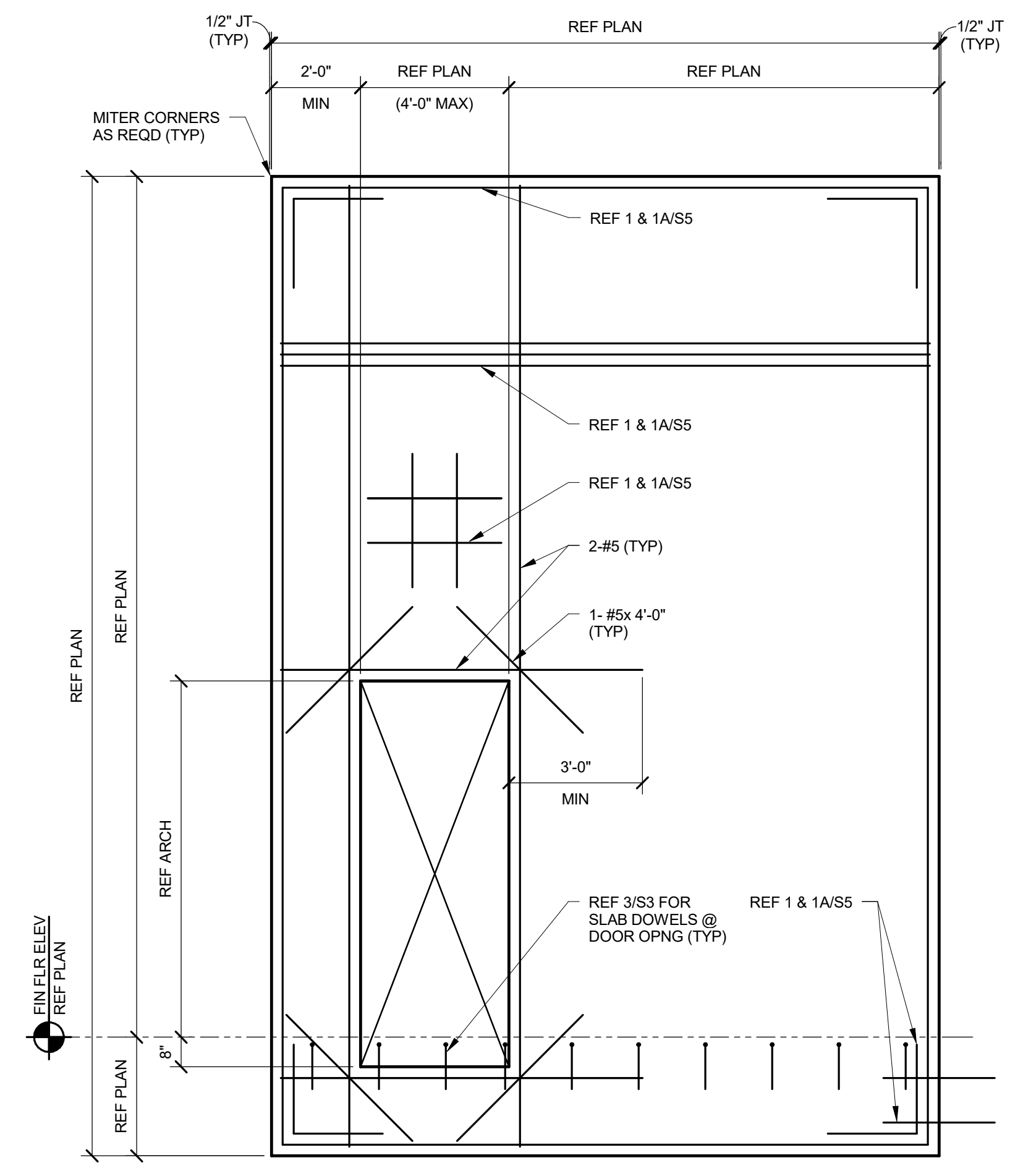
1 TYPICAL 8" PANEL REINFORCEMENT (U.N.O.)
3/8" = 1'-0"



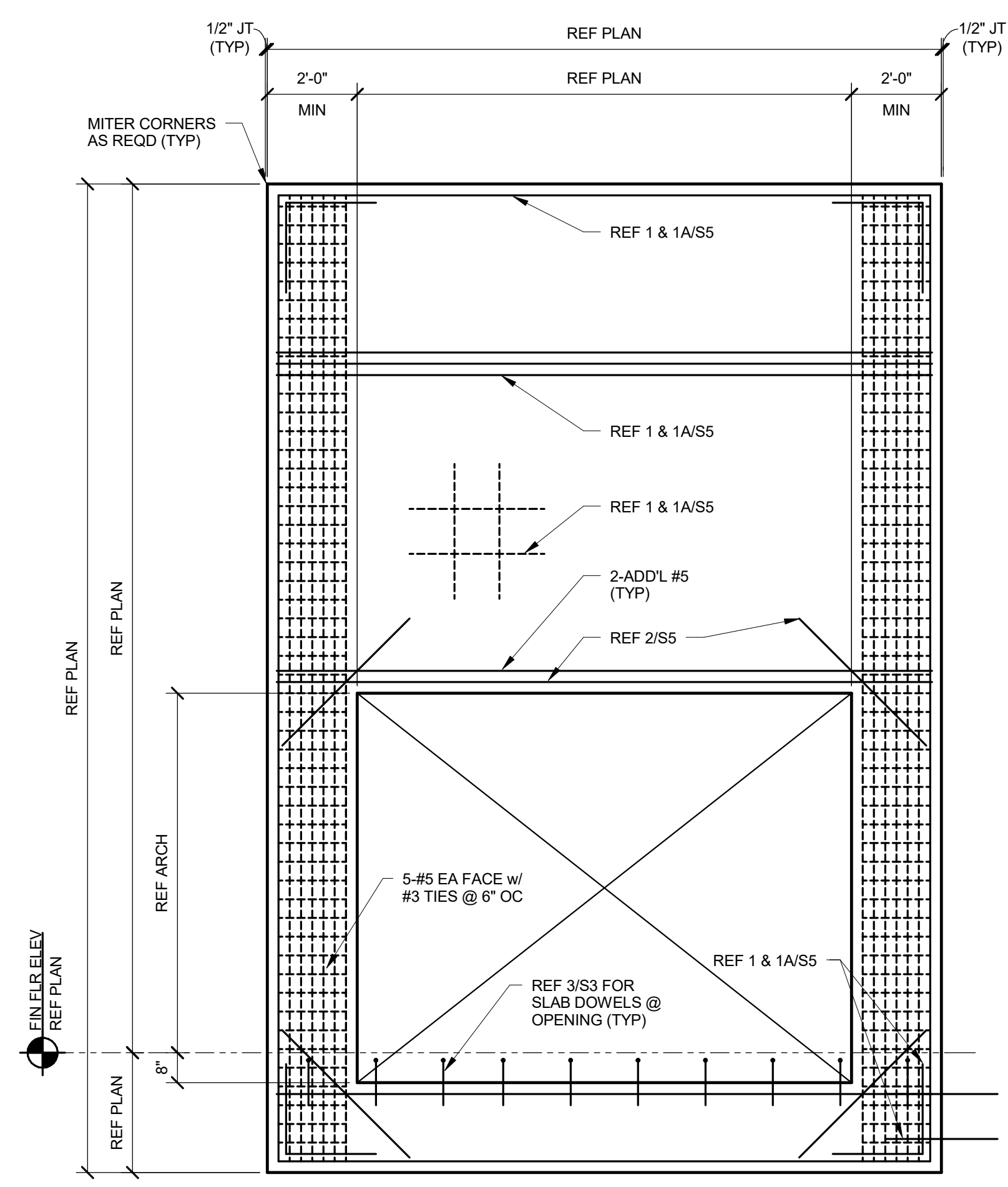
1A 8" PANEL REINFORCEMENT (PANEL P43-P53)
3/8" = 1'-0"



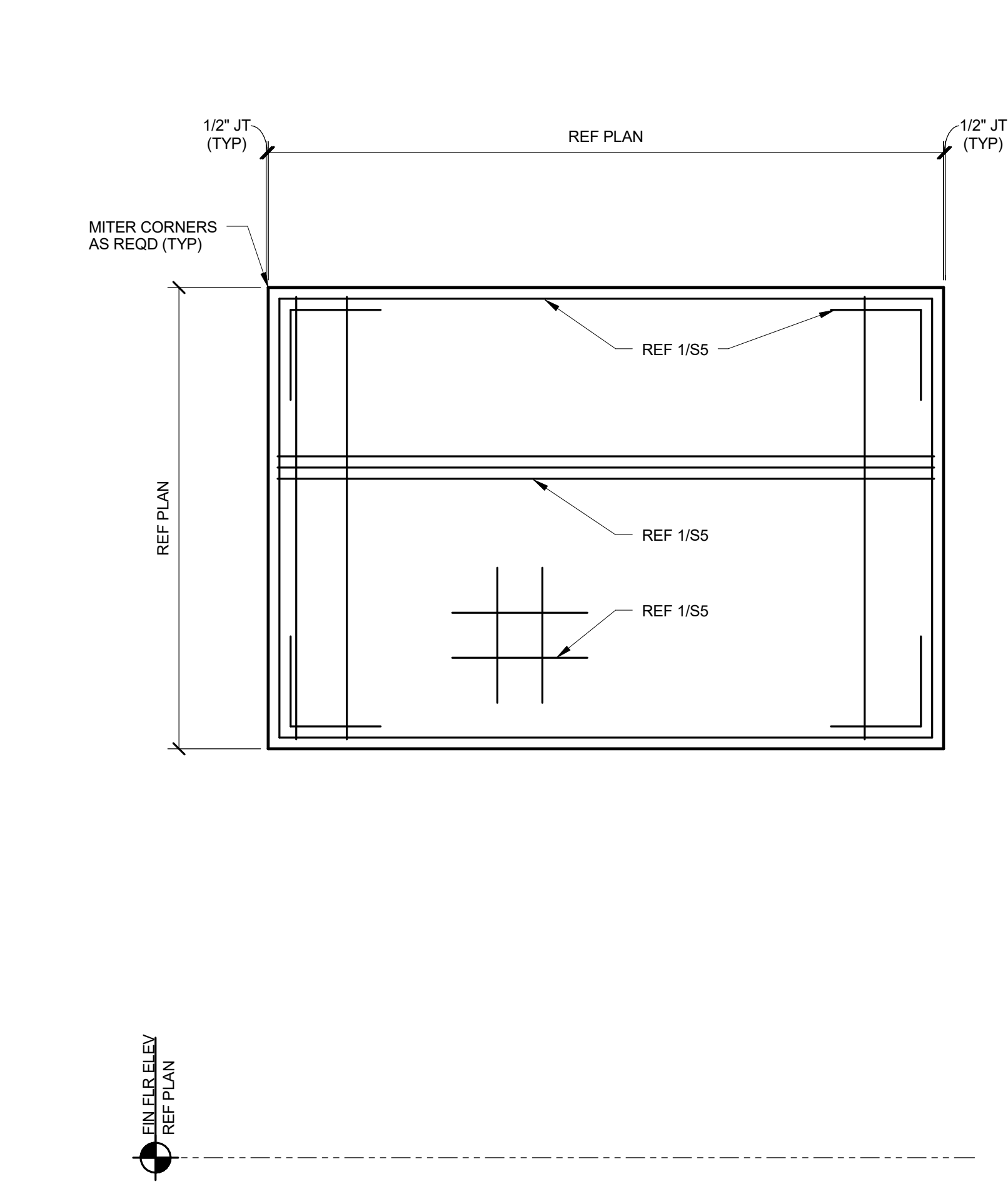
1B TYPICAL 6 1/2" & 7 1/4" PANEL REINF.
3/8" = 1'-0"



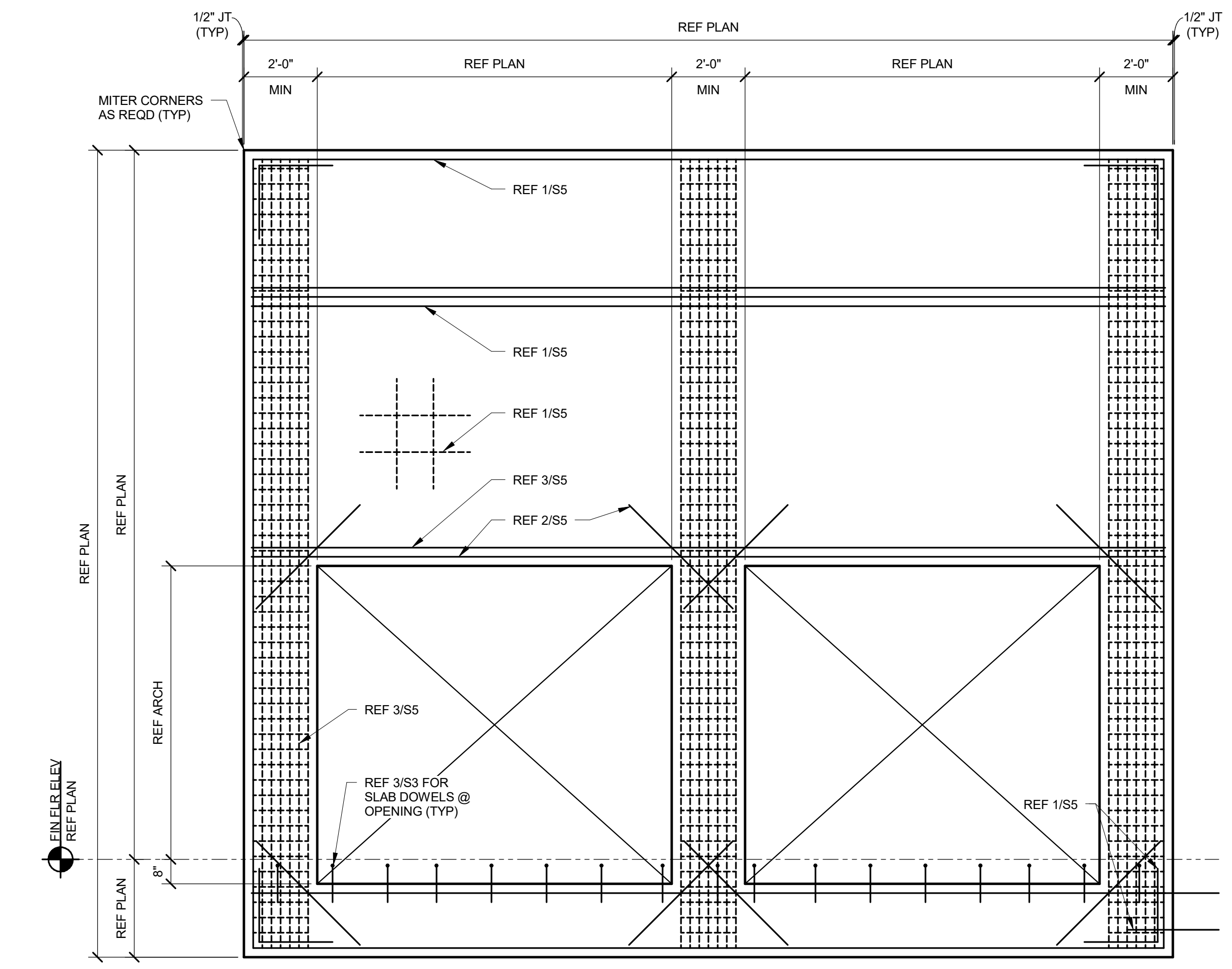
2 TYPICAL PANEL WITH OPENING
3/8" = 1'-0"



3 TYPICAL PANEL WITH OPENING
3/8" = 1'-0"

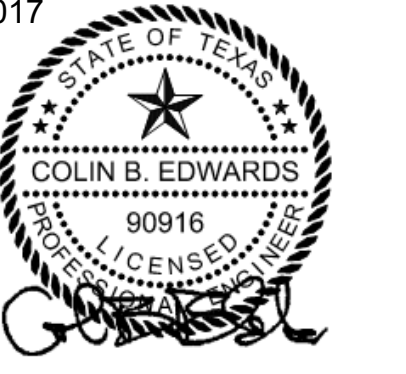


4 TYPICAL SPANDREL PANEL
3/8" = 1'-0"



5 TYPICAL PANEL WITH 2 OPENINGS
3/8" = 1'-0"

05-24-2017



PROJECT NO: 10284 TX REG 0423
HUNT & JOINER, INC.
Consulting Structural Engineers

REV.	DATE	ISSUE TITLE
1	05-24-17	ISSUE FOR BID

INCOMPLETE DOCUMENTS ARE FOR INTERIM REVIEW ONLY. NOT FOR REGULATORY APPROVAL, PERMIT OR CONSTRUCTION

CINERY AMARILLO

PANEL ELEVATIONS

XXXXX PROJECT NUMBER **S5** SHEET NUMBER