

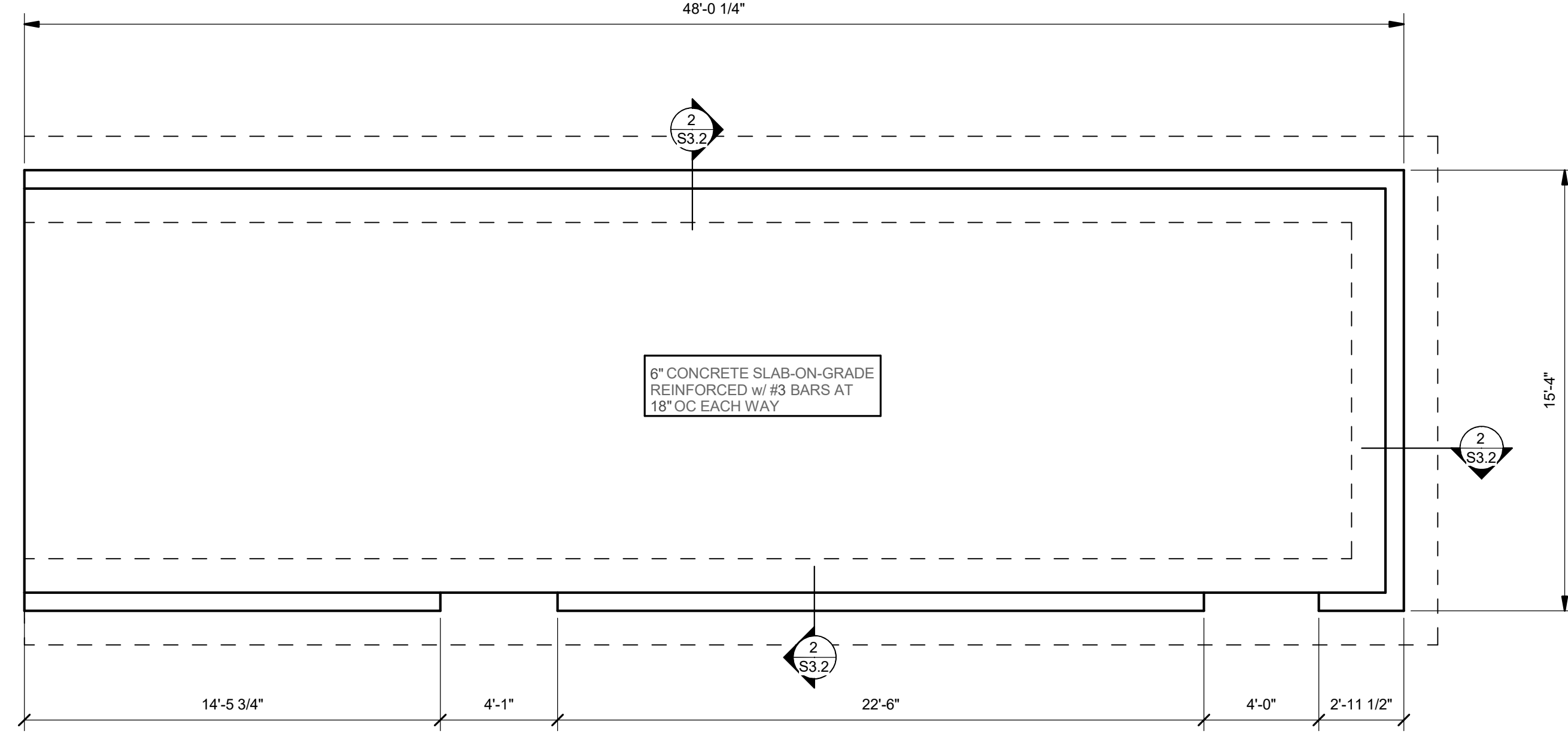


ARCHITECT
5G Studio Collaborative, LLC.
800 Jackson St., Suite 500
Dallas, TX 75202
(CONTACT)

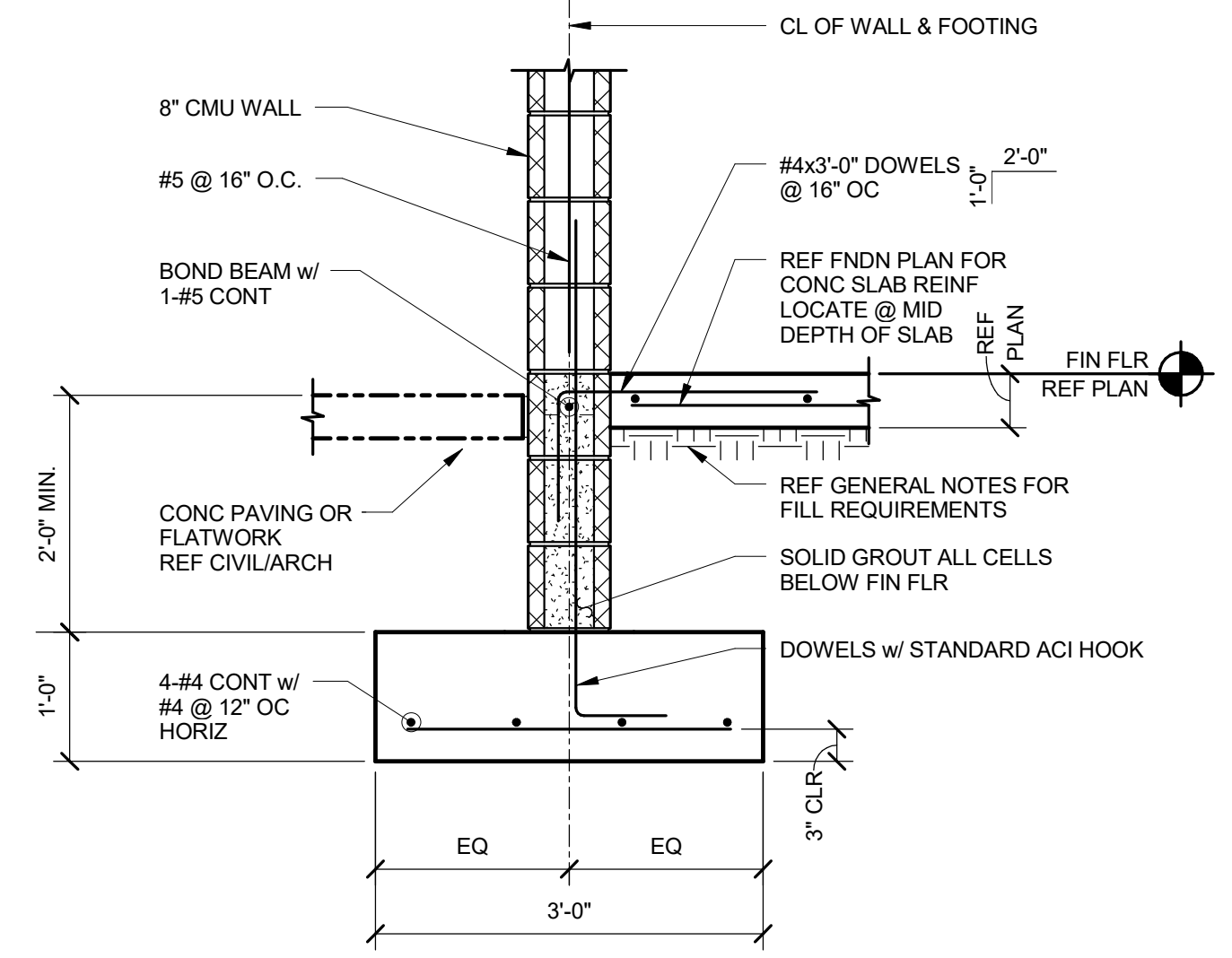
STRUCTURAL ENGINEER
L.A. Fuess Partners
333 Lee Parkway, Suite 300
Dallas, TX 75219
(CONTACT)

MEP ENGINEER
Root Engineering Services
43 FM 3356
Van Alstyne, TX 75486
Adam Harris 903.375.3303

NOTES:
1. COORDINATE TOP OF CONC FOOTING ELEVATION w/ CIVIL GRADES. PROVIDE 2'-0" MIN. COVER BELOW EXTERIOR FINISH GRADE.
2. REF ARCH FOR DUMPSTER PAD LOCATION.



1 DUMPSTER ENCLOSURE PLAN
1/4" = 1'-0"



2 EXTERIOR WALL SECTION
3/4" = 1'-0"

05-24-2017



PROJECT NO. 15284 TX REG 05283
HUNT & JOINER, INC.
Consulting Structural Engineers

REV.	DATE	ISSUE TITLE
1	05-24-17	ISSUE FOR BID

INCOMPLETE DOCUMENTS ARE FOR INTERIM REVIEW ONLY. NOT FOR REGULATORY APPROVAL, PERMIT OR CONSTRUCTION

CINERGY AMARILLO

DUMPSTER ENCLOSURE

XXXXX PROJECT NUMBER **S3.2** SHEET NUMBER