

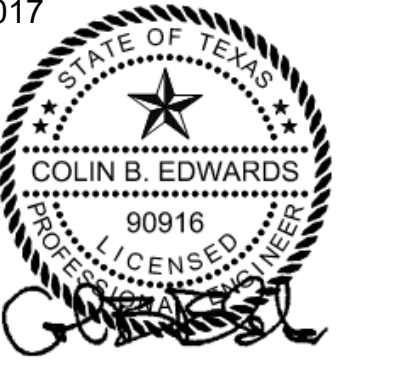


ARCHITECT  
SG Studio Collaborative, LLC.  
800 Jackson St., Suite 500  
Dallas, TX 75202  
(CONTACT)

STRUCTURAL ENGINEER  
L.A. Fuess Partners  
333 Lee Parkway, Suite 300  
Dallas, TX 75219  
(CONTACT)

MEP ENGINEER  
Root Engineering Services  
43 FM 3356  
Van Alstyne, TX 75495  
Adam Harris 903.375.3303

05-24-2017



PROJECT NO: 10284 TX REG#0423  
HUNT & JOINER, INC.  
Consulting Structural Engineers

REV.	DATE	ISSUE TITLE
1	05-24-17	ISSUE FOR BID

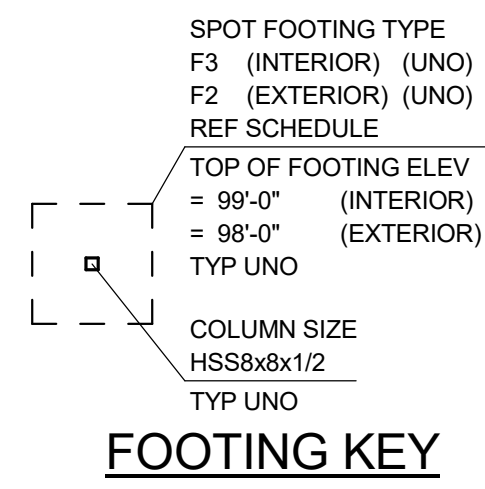
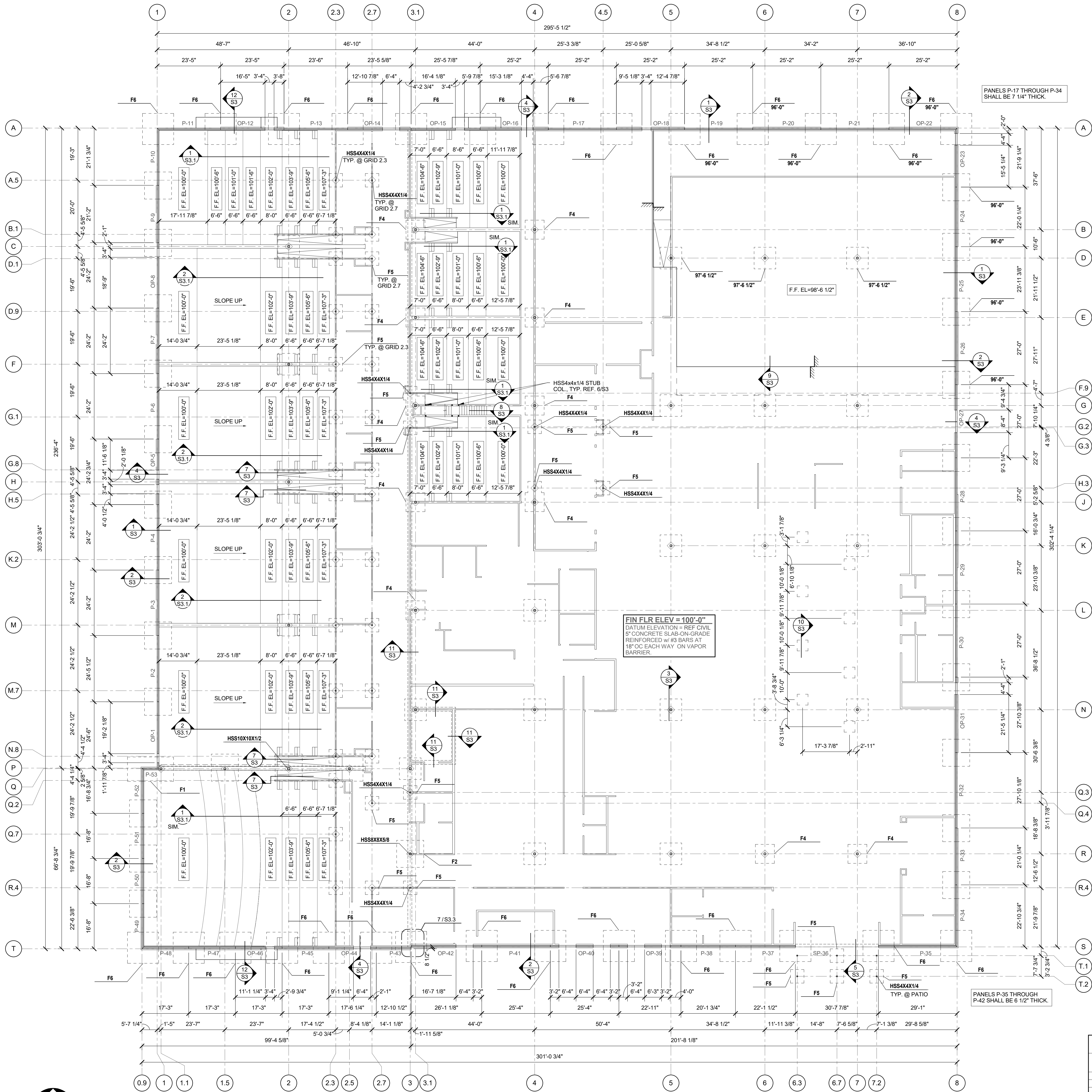
INCOMPLETE DOCUMENTS ARE FOR INTERIM REVIEW ONLY. NOT FOR REGULATORY APPROVAL, PERMIT OR CONSTRUCTION

CINERGY AMARILLO

FOUNDATION PLAN

S1

XXXXX PROJECT NUMBER SHEET NUMBER



- NOTES:
1. ALL ELEVATIONS ARE BASED ON A RELATIVE ELEVATION OF 100'-0" EQUAL TO THE INDICATED DATUM ELEVATION. VERIFY DATUM ELEVATION WITH THE LATEST CIVIL DRAWINGS PRIOR TO CONSTRUCTION.
  2. TOP OF PIER/FOOTING ELEVATIONS SHALL BE COORDINATED WITH THE LATEST CIVIL DRAWINGS PRIOR TO CONSTRUCTION.
  3. COORDINATE BUILDING DIMENSIONS & WALL OPENINGS WITH ARCHITECTURAL DRAWINGS.
  4. UNLESS NOTED OTHERWISE, PANELS SHALL BE 6" THICK.

FOOTING SCHEDULE

MARK	LENGTH	WIDTH	THICKNESS	REINF (TRANS)	REINF (LONG)	REINF LOCATION	NOTES
F1	9'-0"	17'-0"	2'-0"	(22) #6	(18) #6	TOP & BOT	1,2
F2	10'-0"	10'-0"	1'-6"	(9) #6	(9) #6	TOP & BOT	1,2
F3	5'-0"	8'-0"	1'-6"	(8) #6	(8) #6	TOP & BOT	1,2
F4	7'-0"	7'-0"	1'-0"	(7) #5	(7) #5	BOT	1,2
F5	5'-0"	5'-0"	1'-0"	(5) #5	(5) #5	BOT	1,2
F6	11'-6"	11'-6"	1'-8"	(12) #6	(12) #6	TOP & BOT	1,2

**1 Foundation Plan**  
1/16" = 1'-0"  
NORTH