



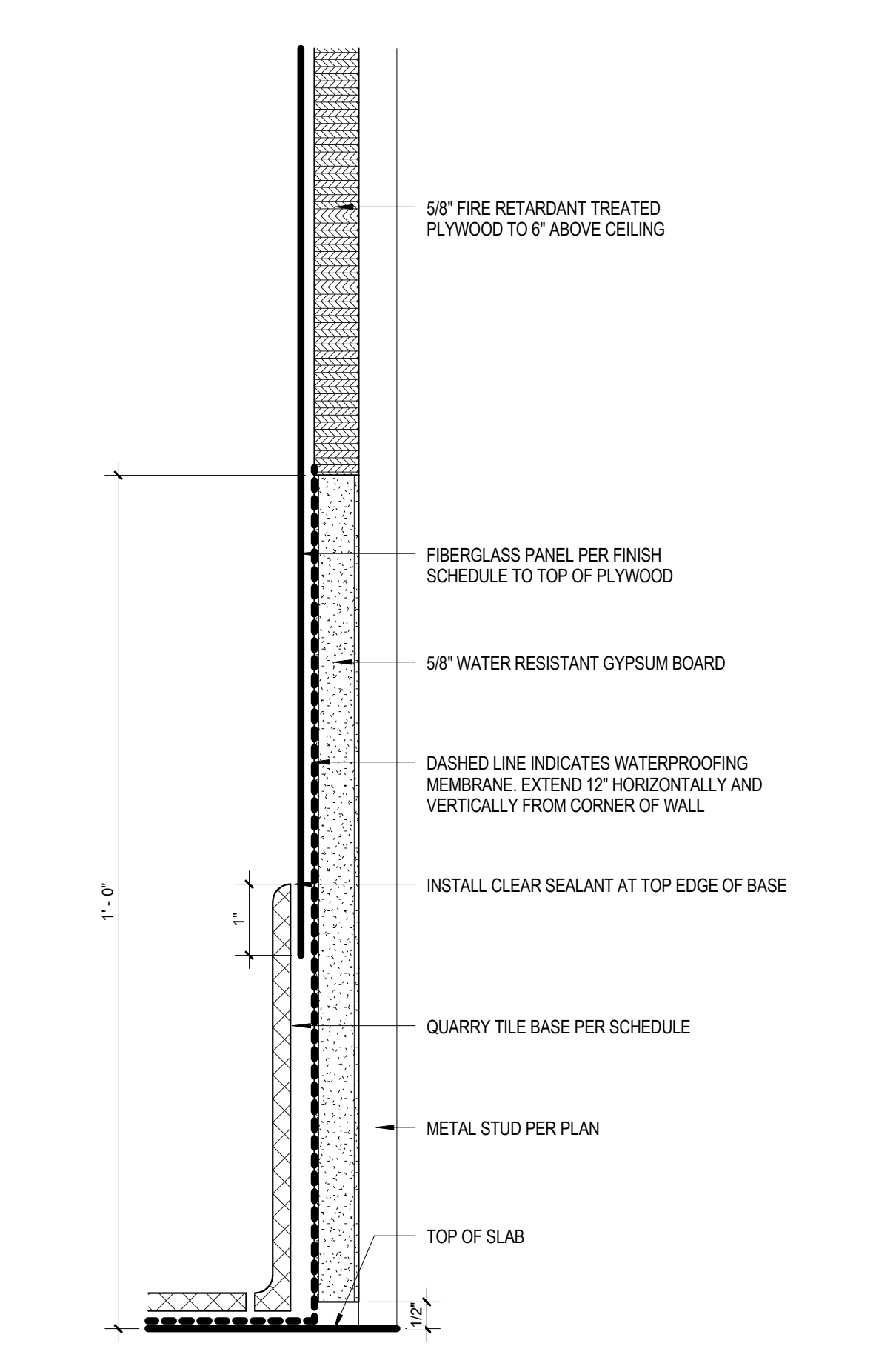
ARCHITECT
5G Studio Collaborative, LLC.
800 Jackson St., Suite 500
Dallas, TX 75202
Ian Meares 214-646-1508

STRUCTURAL ENGINEER
Hunt & Joiner, Inc.
1120 Capitol of Texas Highway Suite 100
Austin, TX 78746
Colin Edwards 512-358-8788

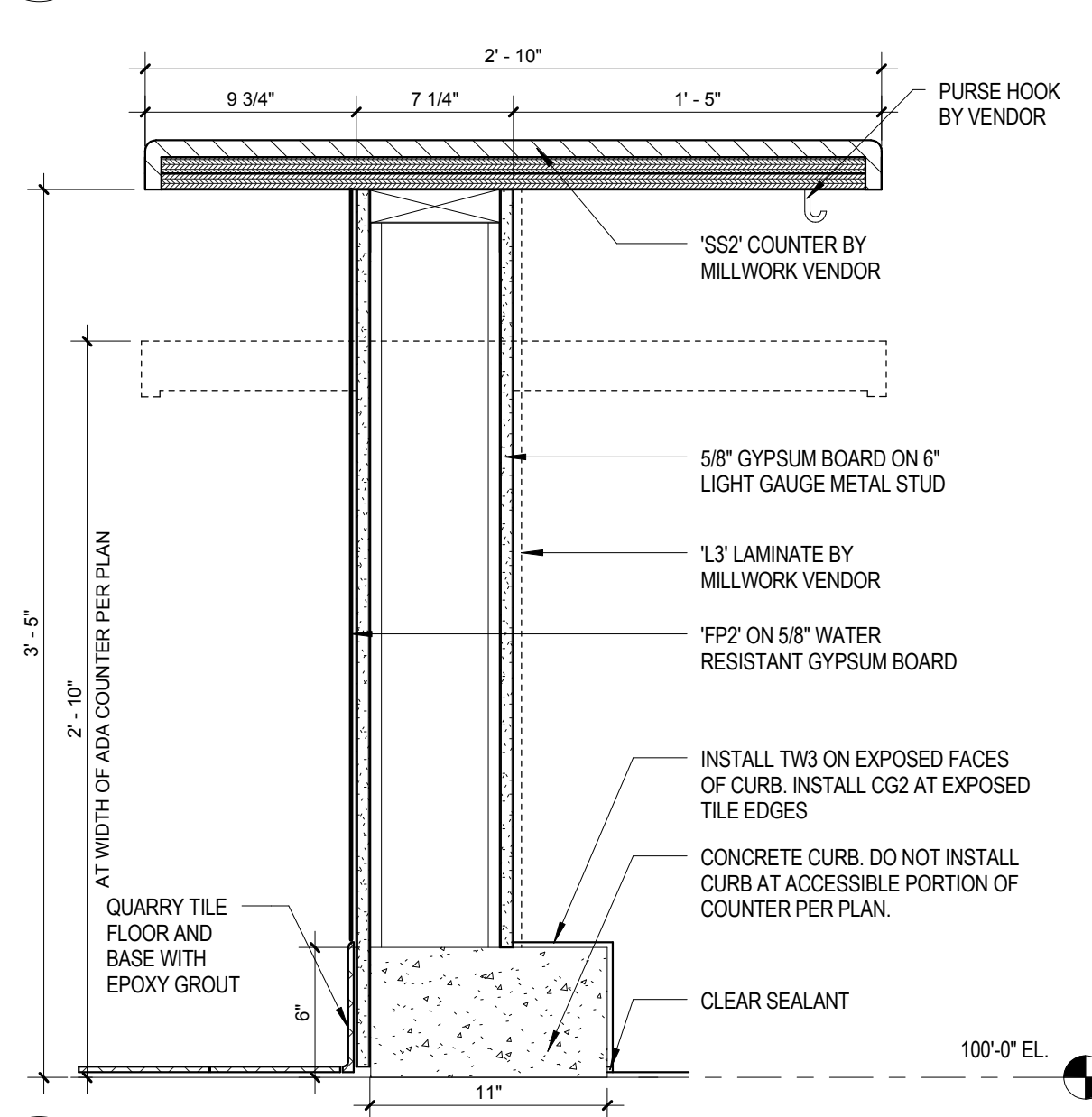
MEP ENGINEER
Envirodesign
900 Ranch Road 620 South, Suite C101-301
Austin, TX 78734
Sara Patton 512-693-9015

CIVIL ENGINEER
Maverick Engineering
1909 West Wall Street, Suite K
Midland, TX 79701
Andrew Melton 432-282-0999

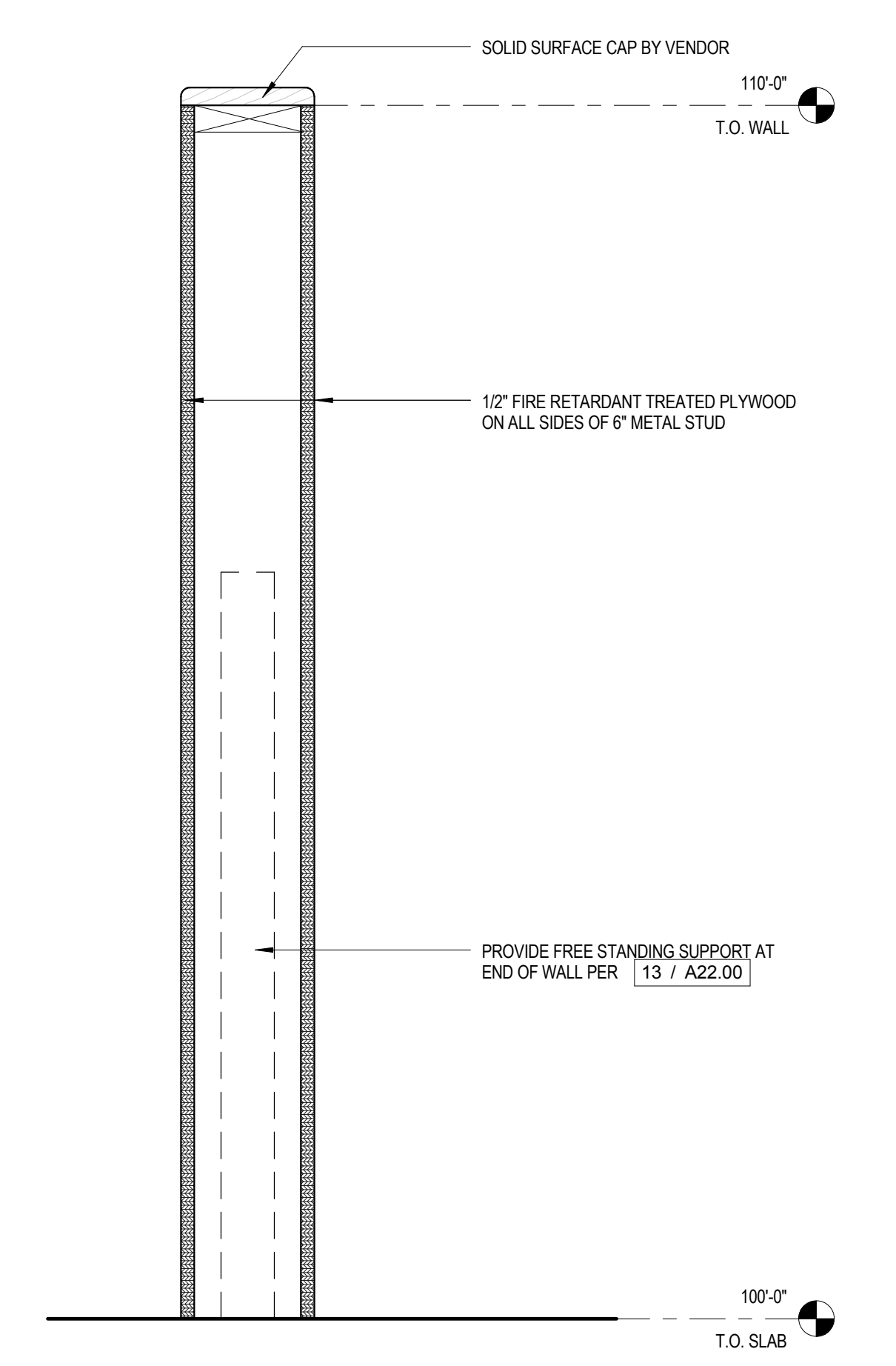
OWNER
Cinergy Cinemas & Entertainment
5720 LBJ Freeway, Suite 625
Dallas, TX 75240
Jeffrey Benson 469-804-7475



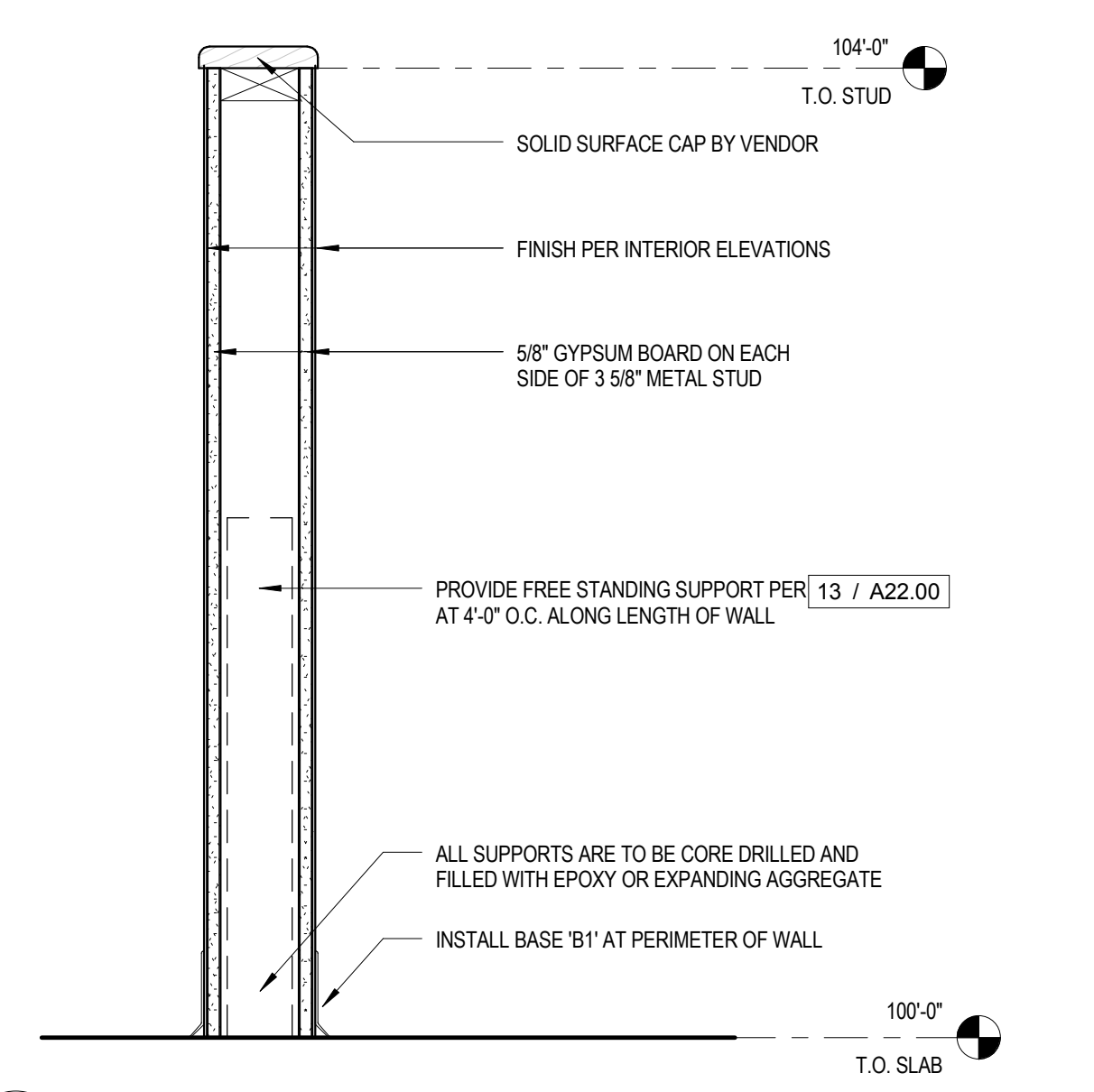
22 KITCHEN SHEATHING
6\"/>



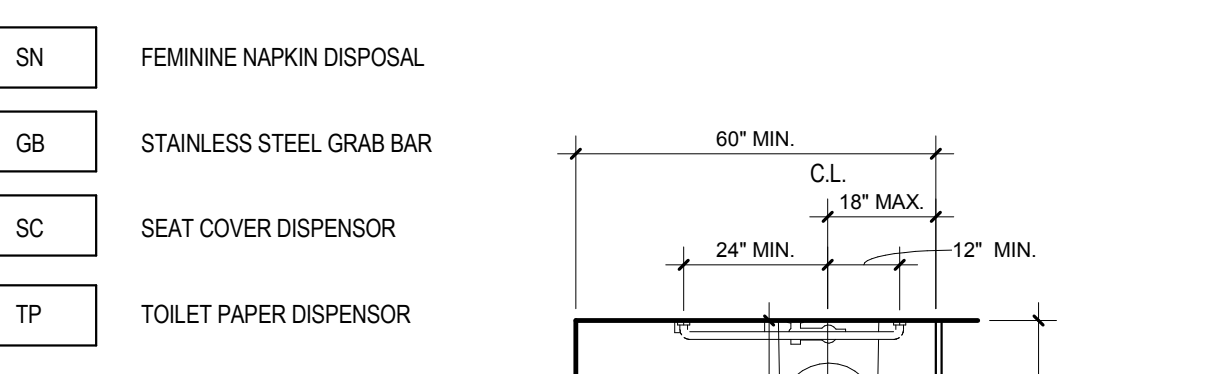
21 BAR SECTION
1 1/2\"/>



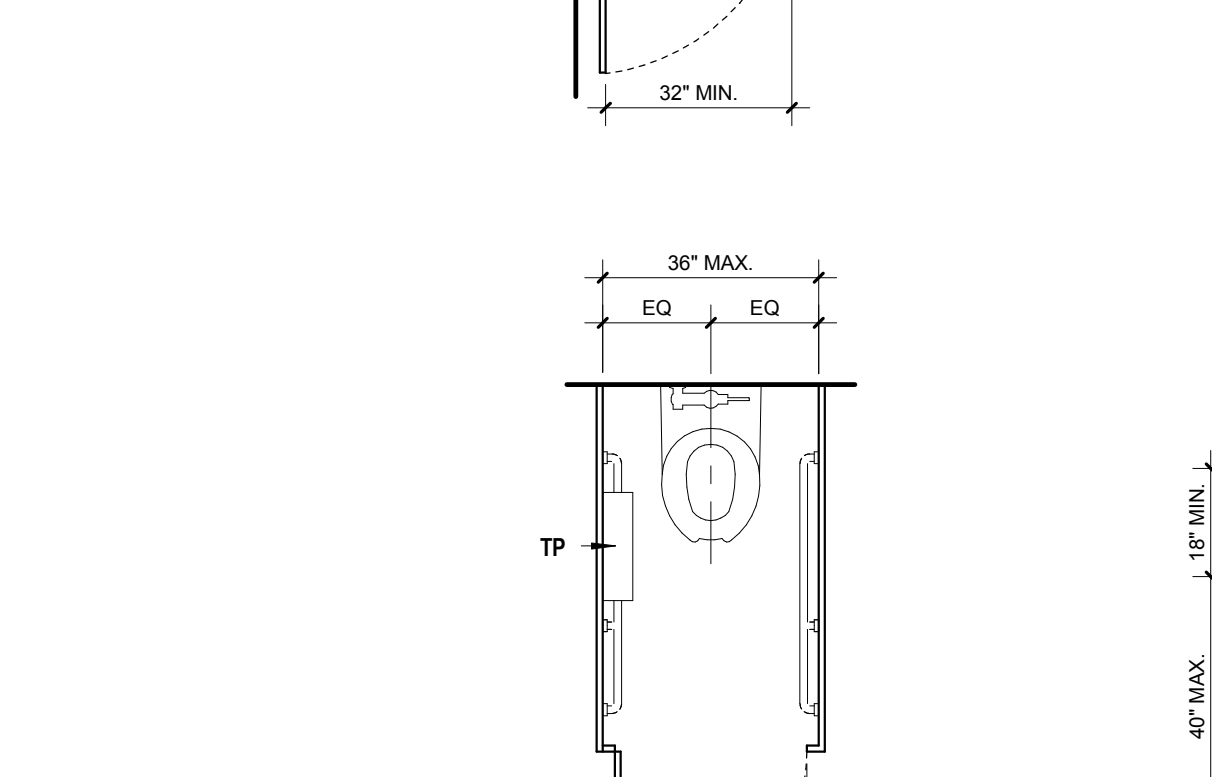
20 BOWLING BAR WALL
1 1/2\"/>



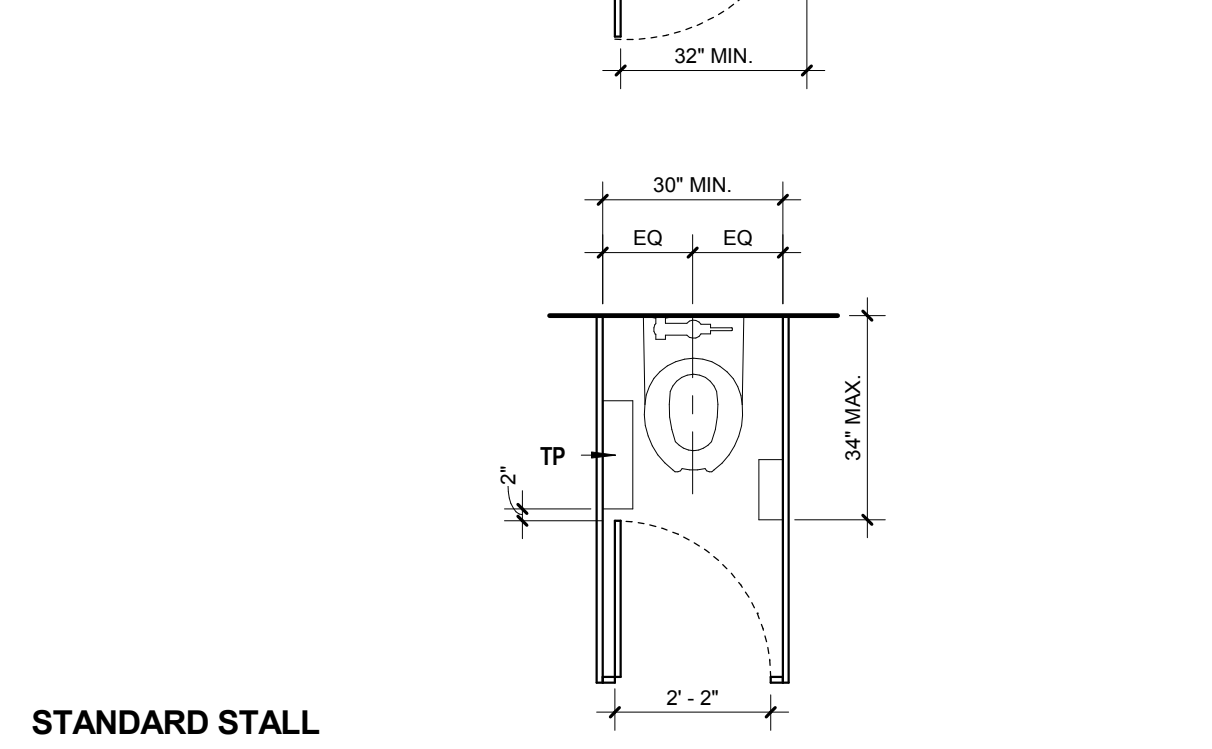
19 LOW WALL AT BAR AND REDEMPTION
1 1/2\"/>



ACC_ACCESSIBLE STALL

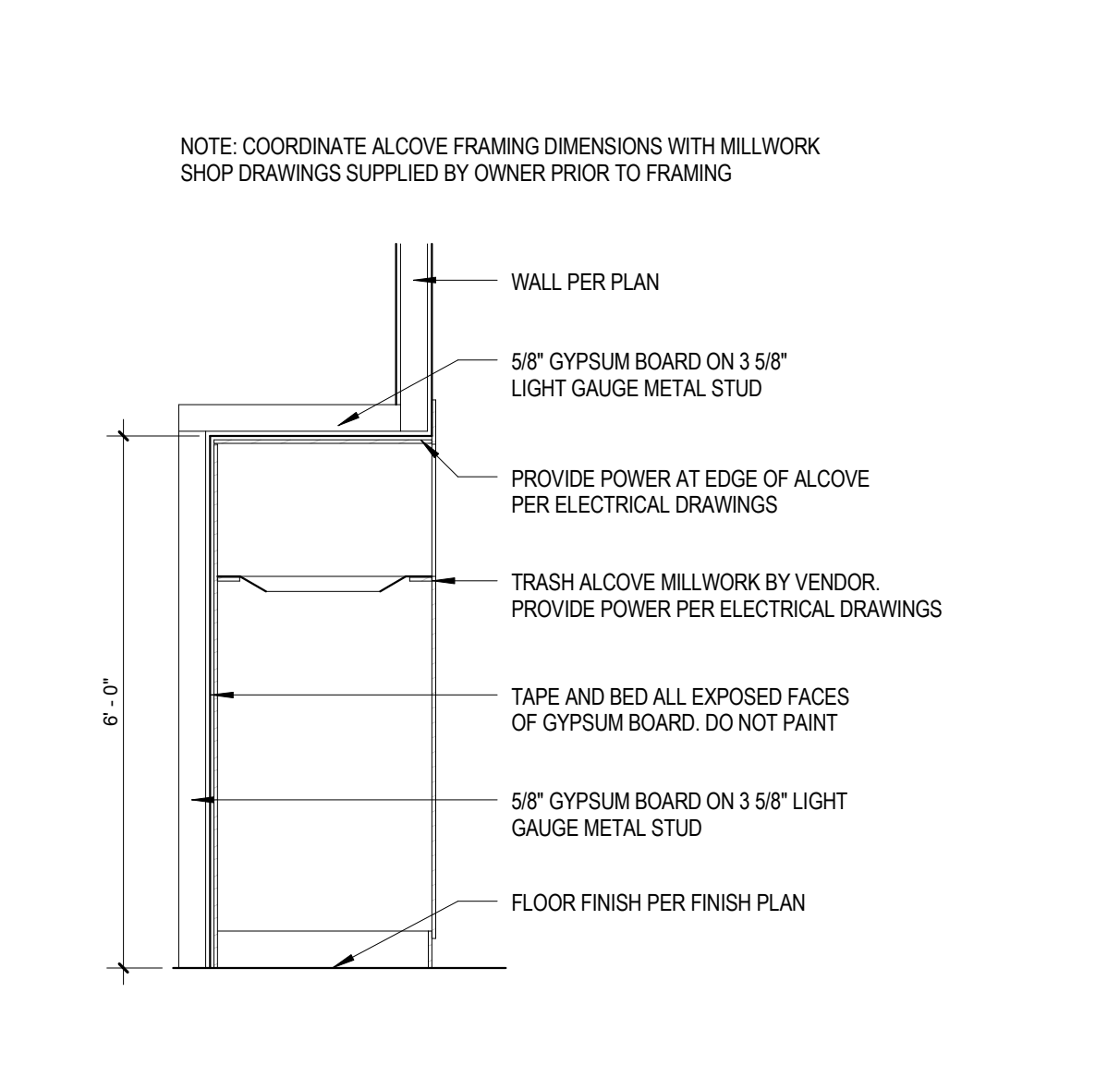


AMB_AMBULATORY STALL

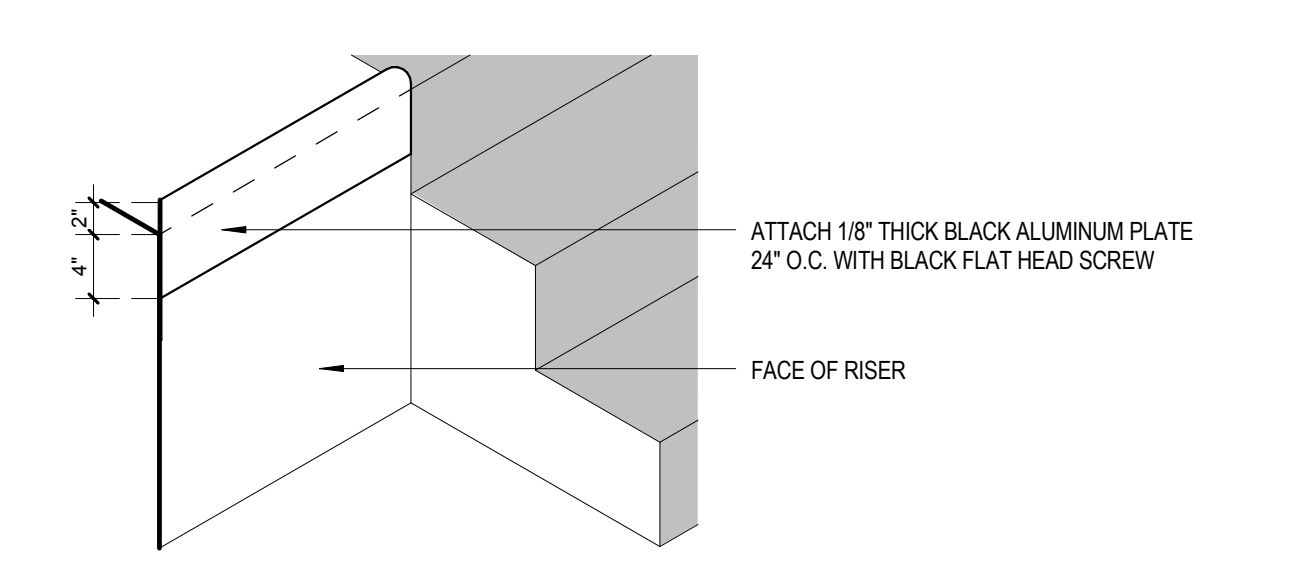


STANDARD STALL

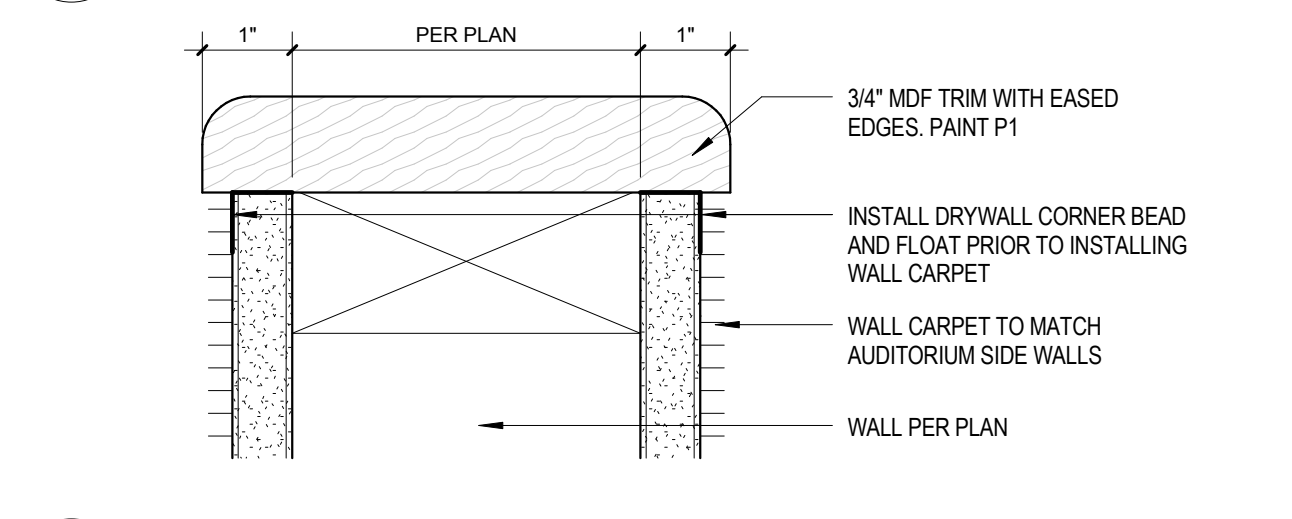
15 TOILET COMPARTMENT ACCESSORIES
38\"/>



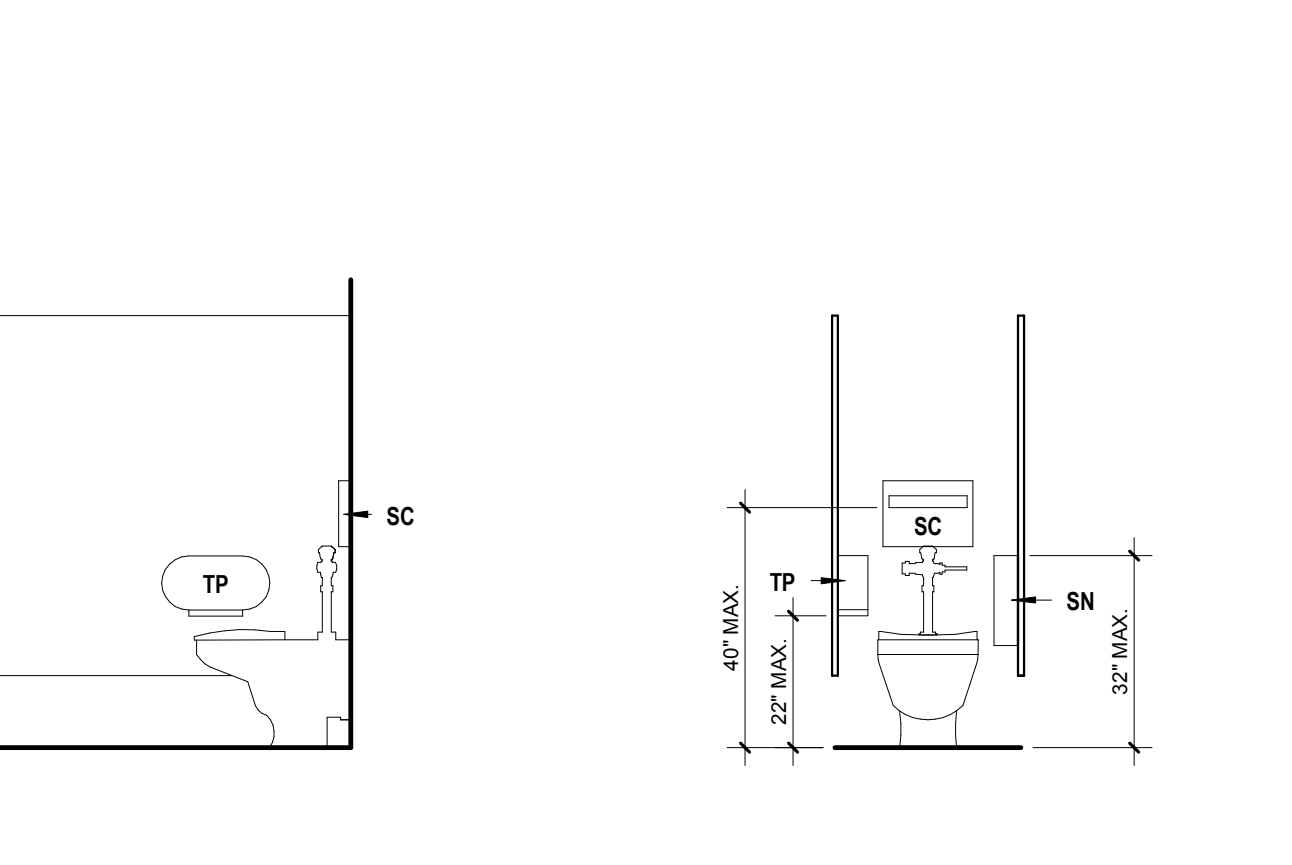
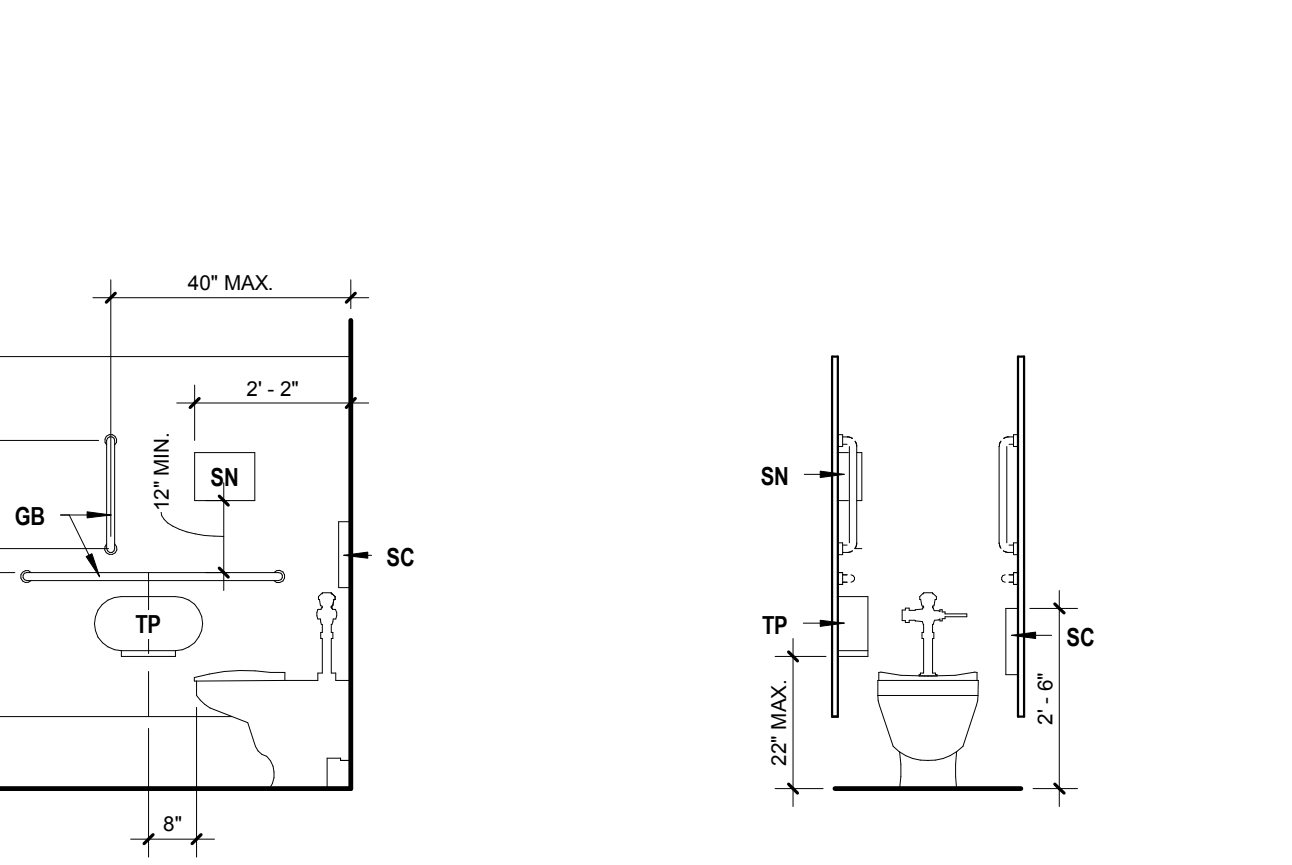
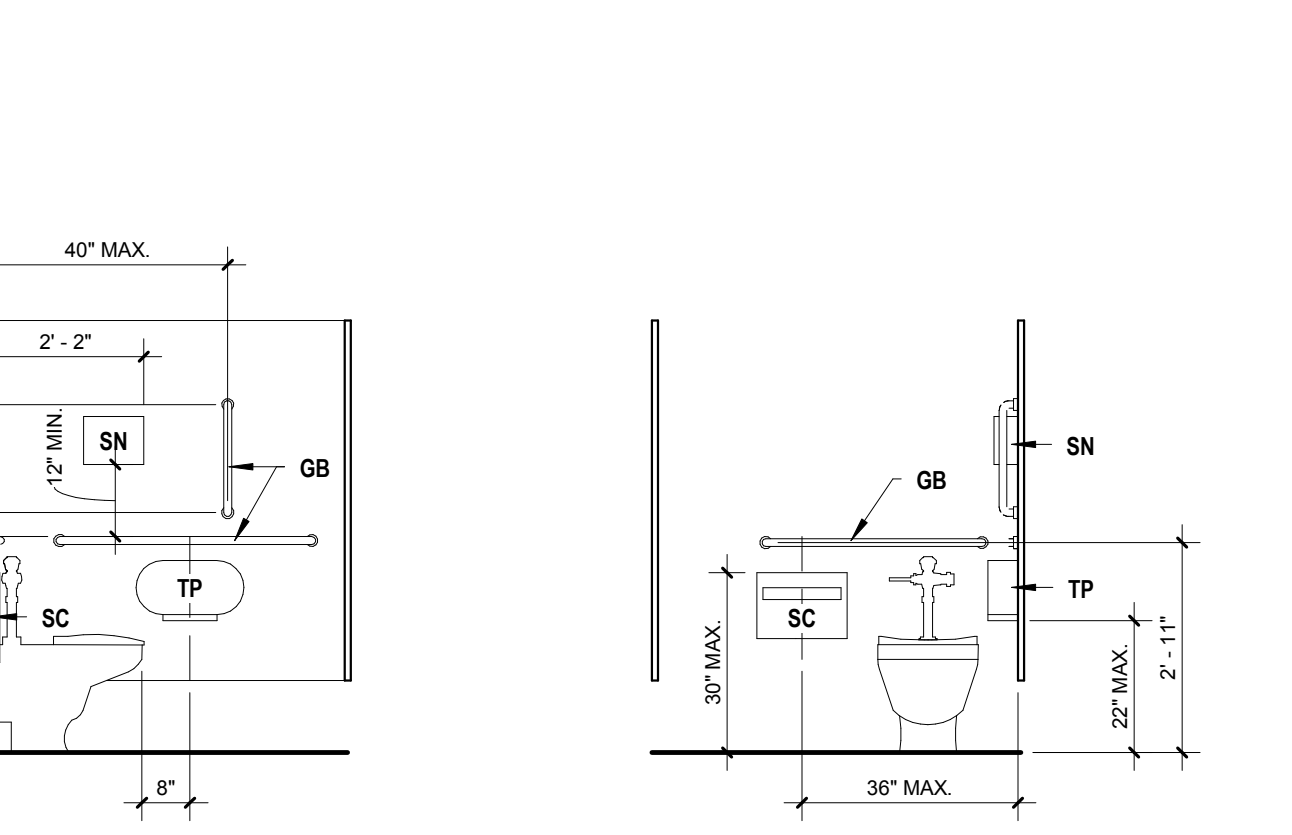
18 TRASH ALCOVE
1 1/2\"/>



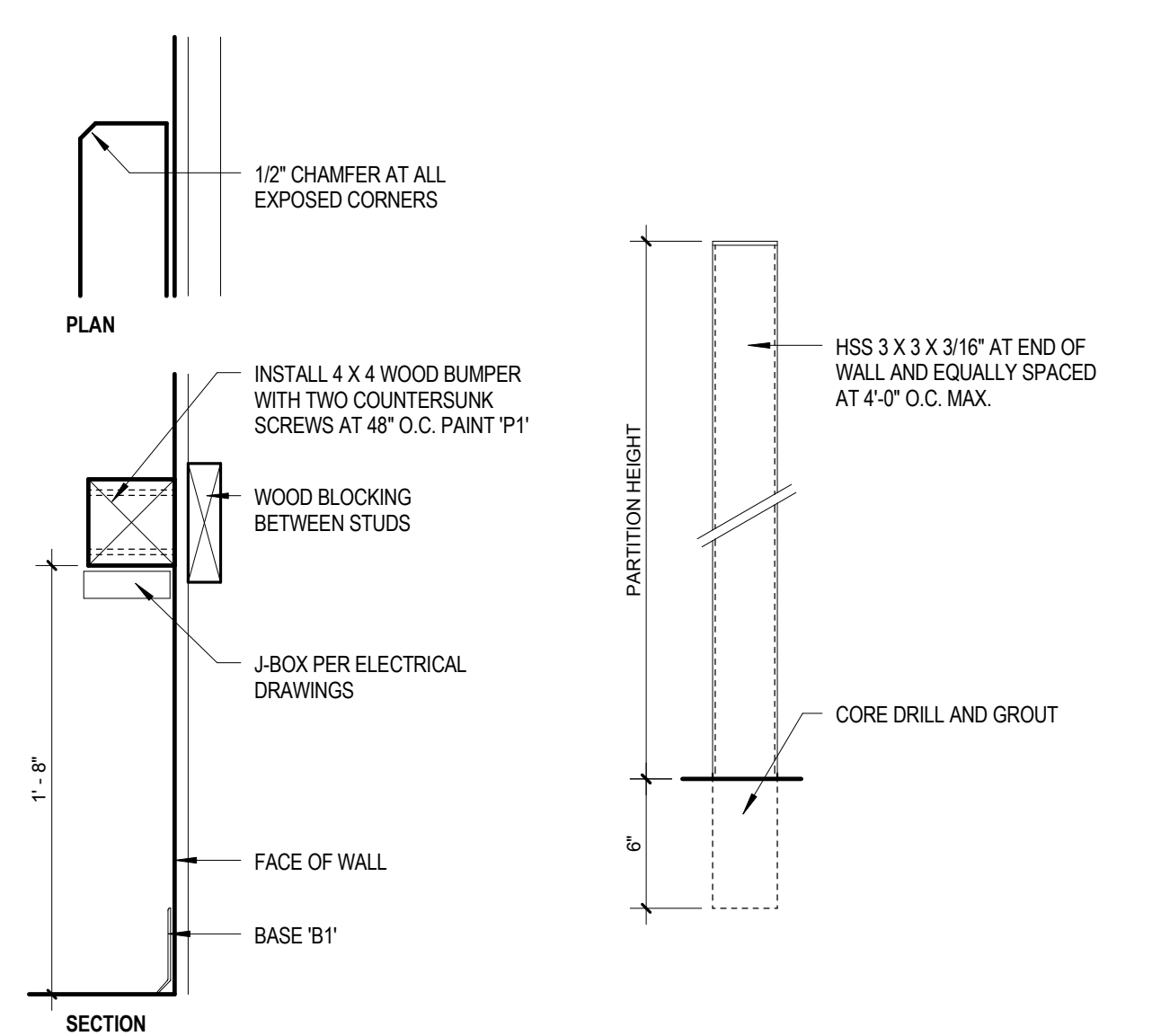
17 TRASH GUARD
1\"/>



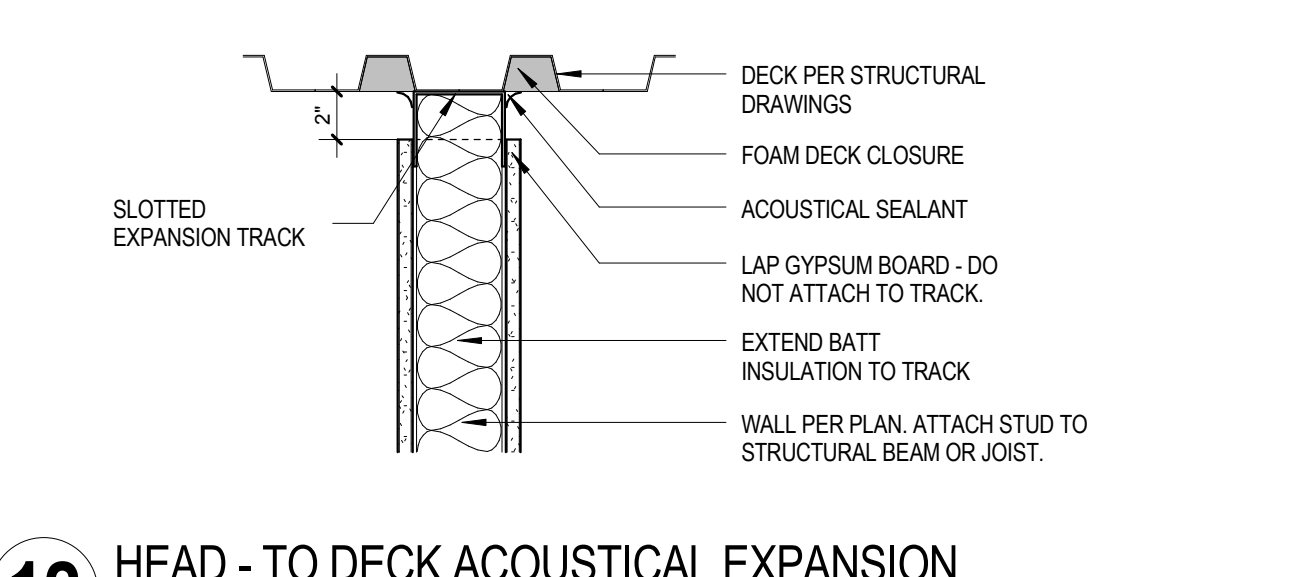
16 VOMITORY WALL CAP
6\"/>



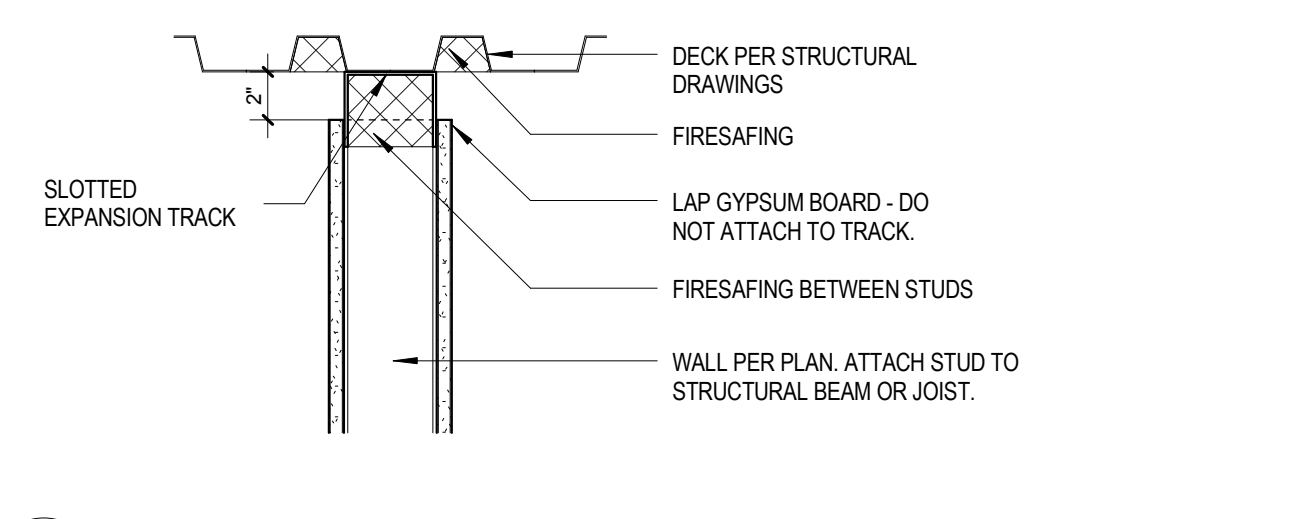
14 GAME WALL BUMPER
1 1/2\"/>



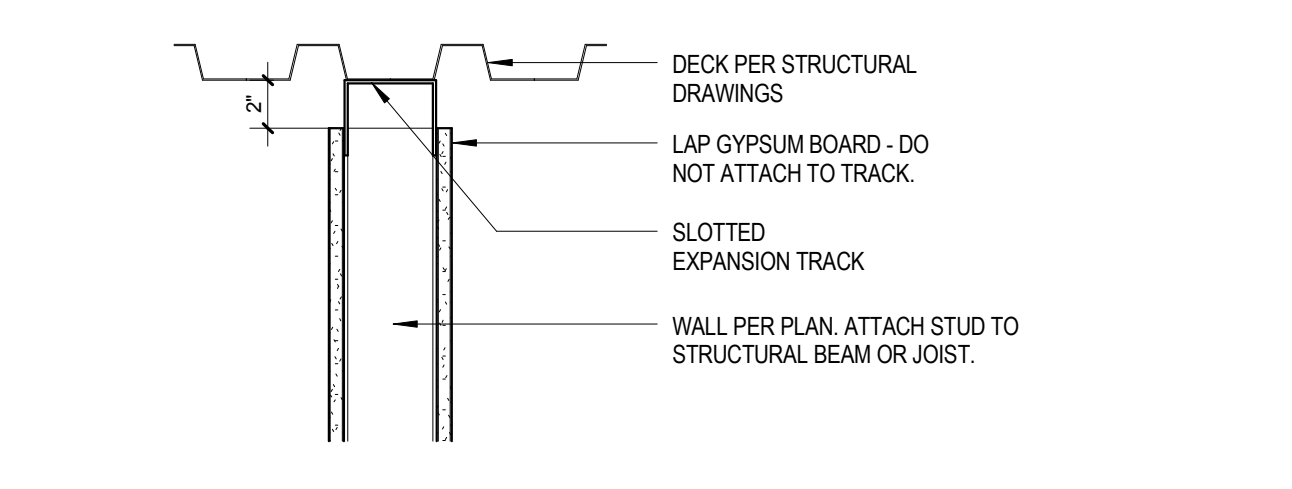
14 GAME WALL BUMPER
1 1/2\"/>



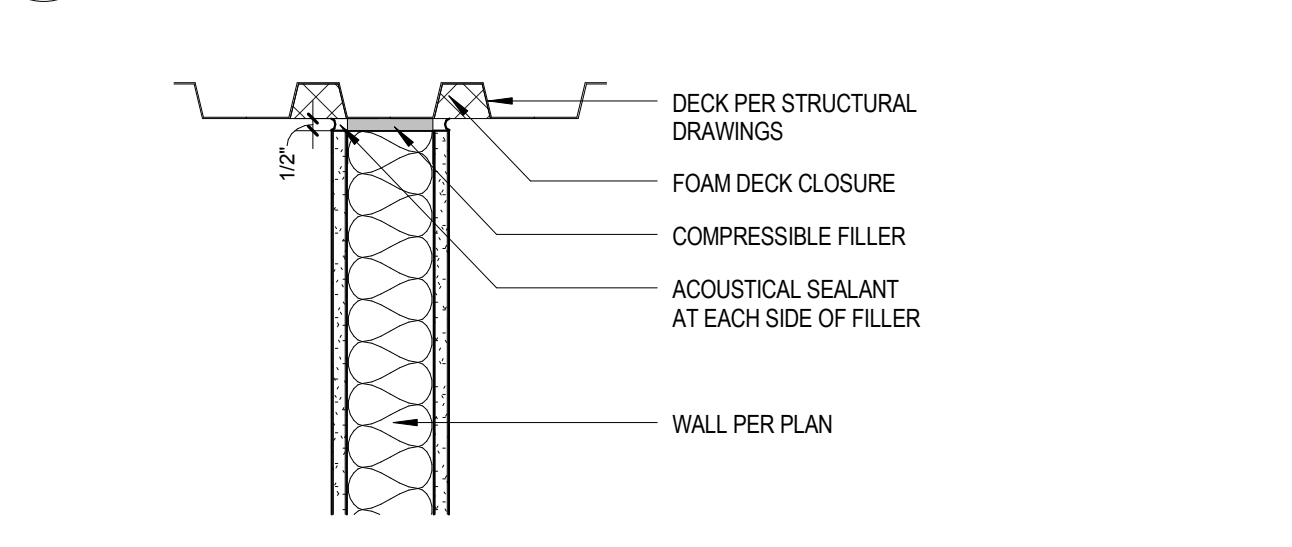
12 HEAD - TO DECK ACOUSTICAL EXPANSION
1 1/2\"/>



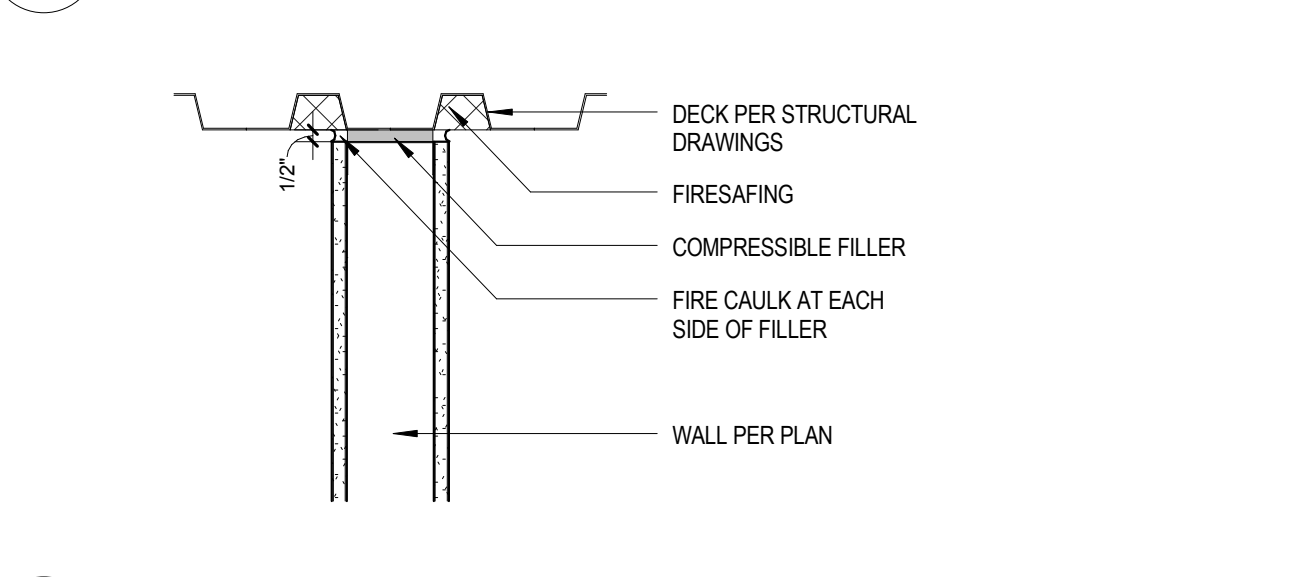
11 HEAD - TO DECK RATED EXPANSION
1 1/2\"/>



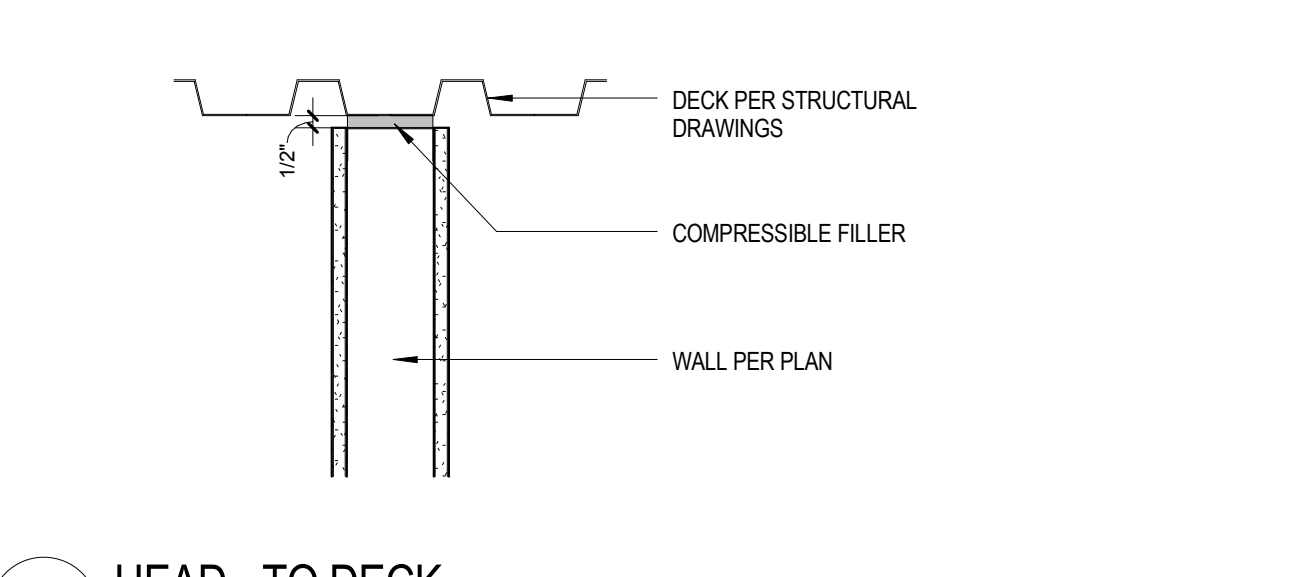
10 HEAD - TO DECK EXPANSION
1 1/2\"/>



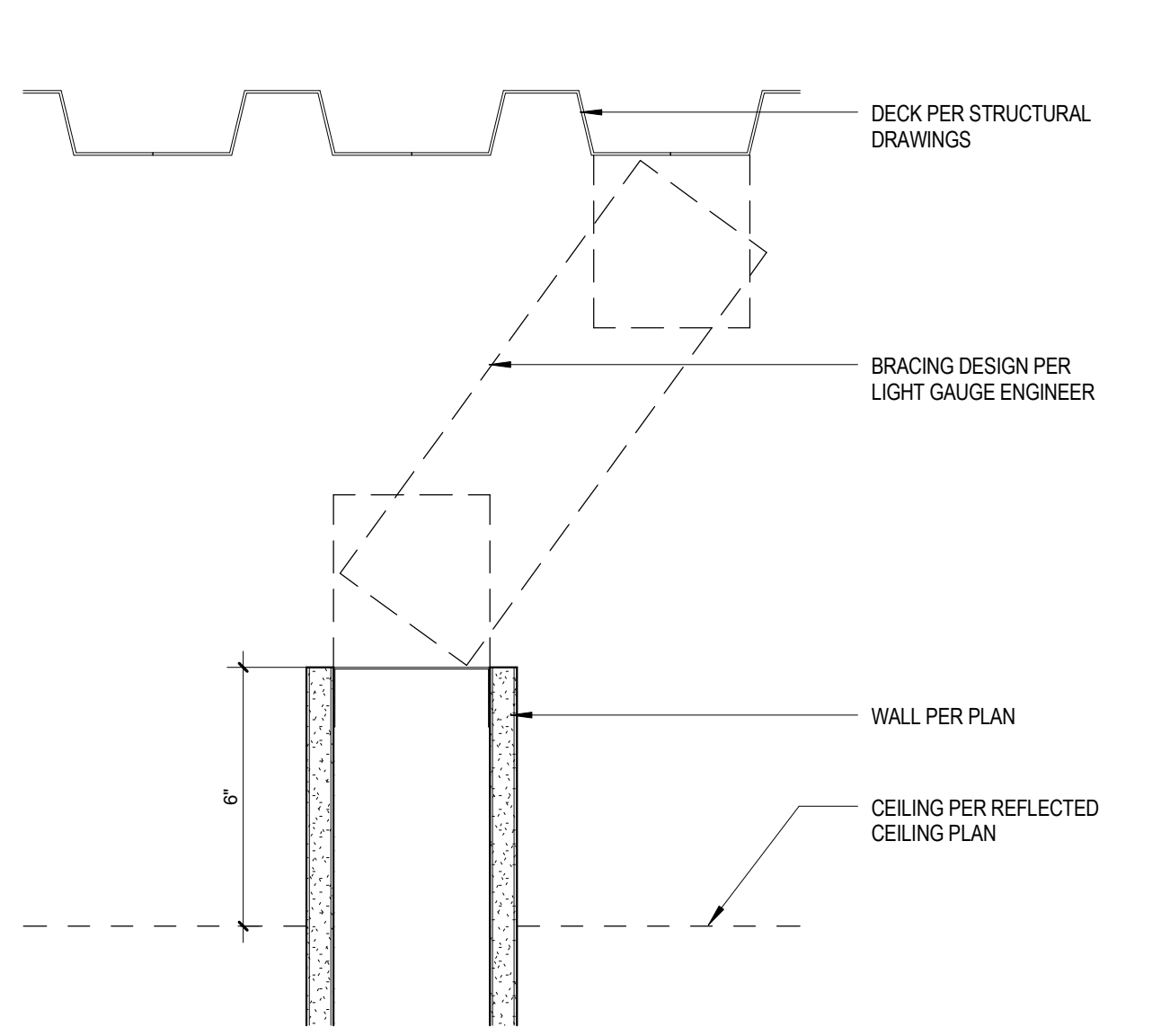
9 HEAD - TO DECK ACOUSTICAL
1 1/2\"/>



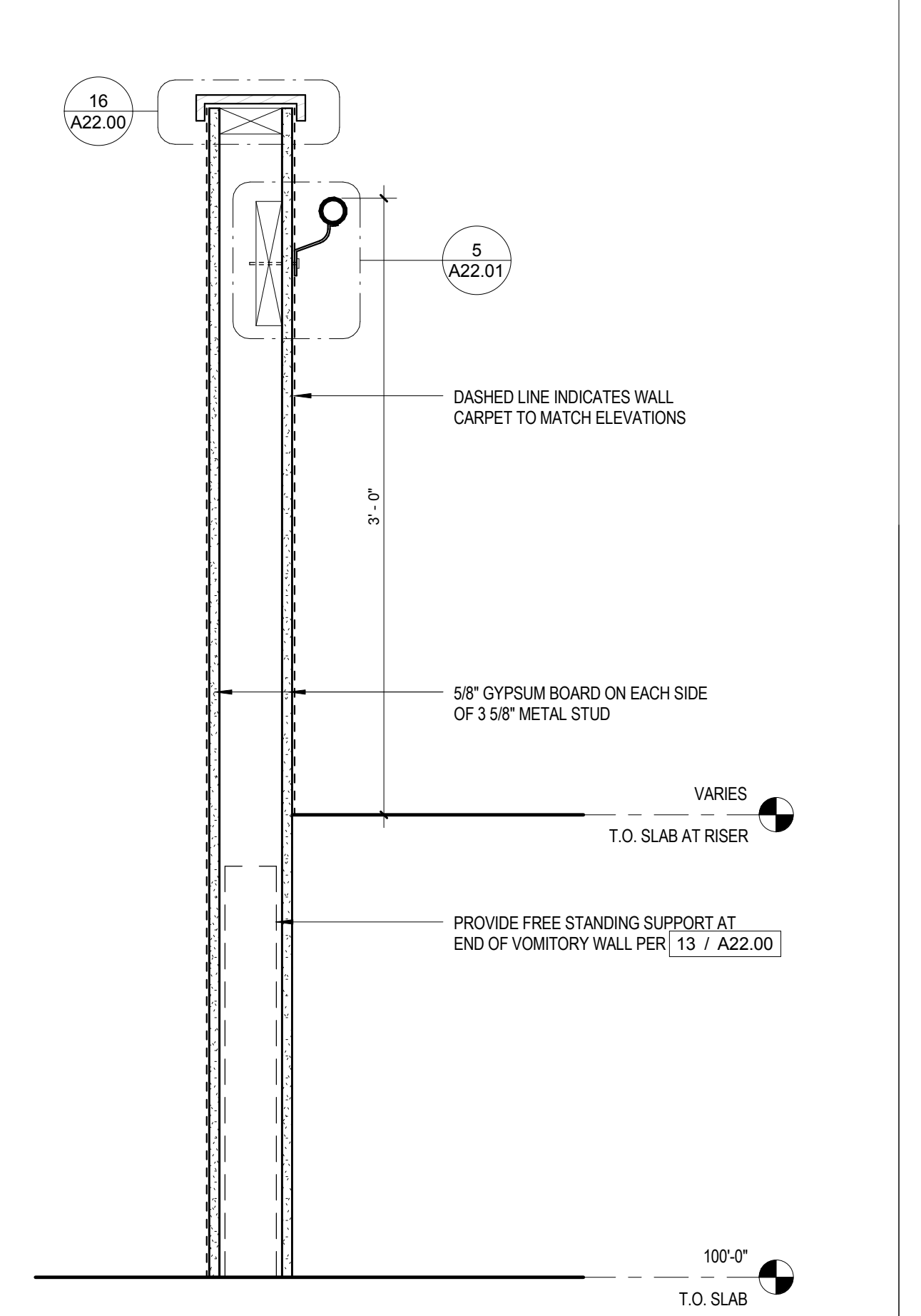
8 HEAD - TO DECK RATED
1 1/2\"/>



7 HEAD - TO DECK
1 1/2\"/>

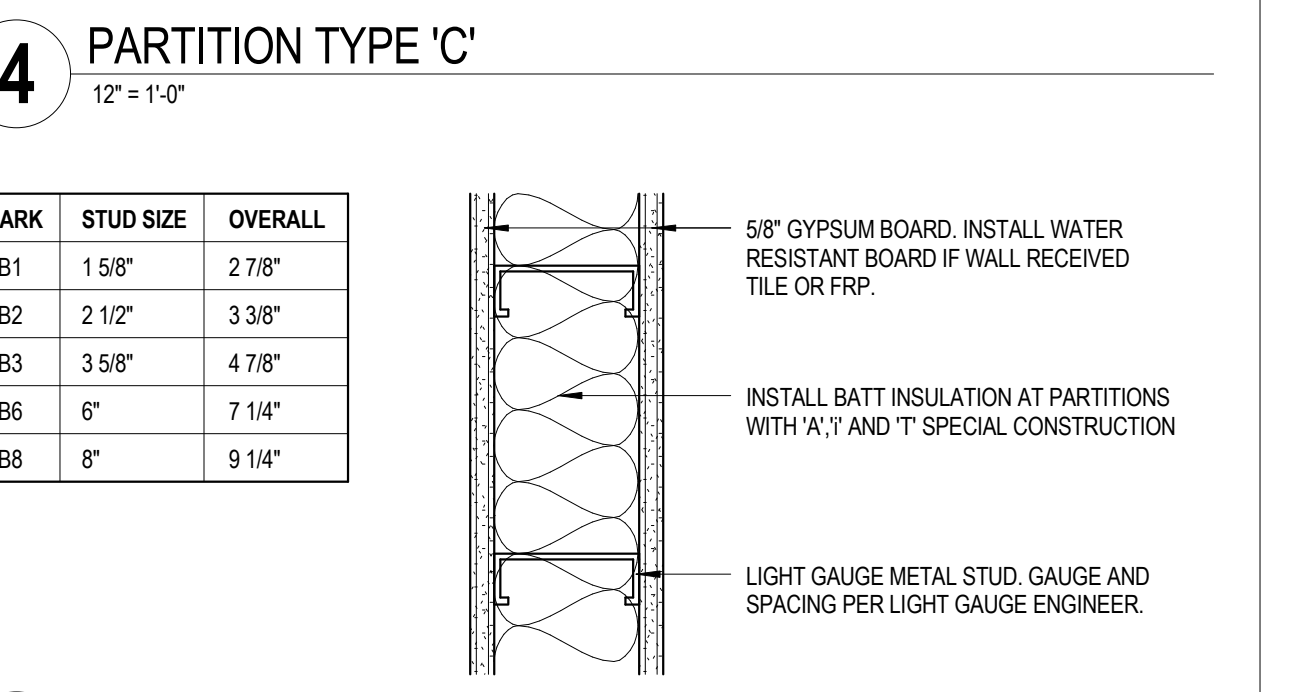


6 HEAD - ABOVE CEILING
3\"/>



5 PARTITION TYPE 'V'
1 1/2\"/>

MARK	STUD SIZE	OVERALL
C1	1 5/8"	4 1/8"
C2	2 1/2"	4 7/8"
C3	3 5/8"	6 1/8"
C6	6"	8 1/2"
C8	8"	10 1/2"

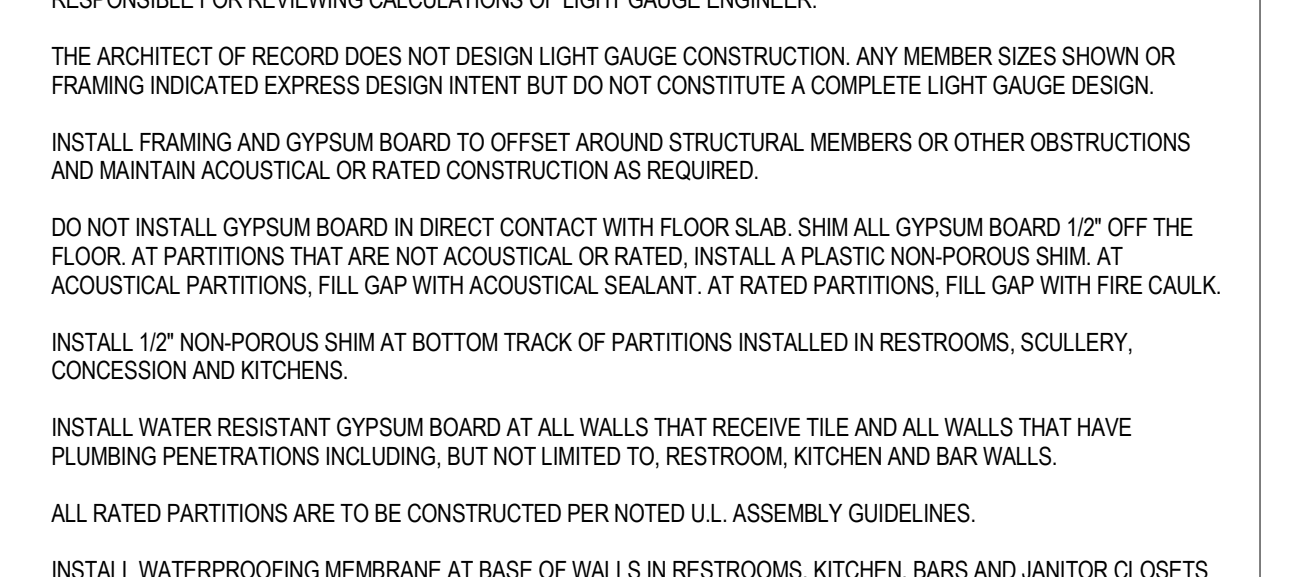


4 PARTITION TYPE 'C'
12\"/>

MARK	STUD SIZE	OVERALL
B1	1 5/8"	2 7/8"
B2	2 1/2"	3 3/8"
B3	3 5/8"	4 7/8"
B6	6"	7 1/4"
B8	8"	9 1/4"

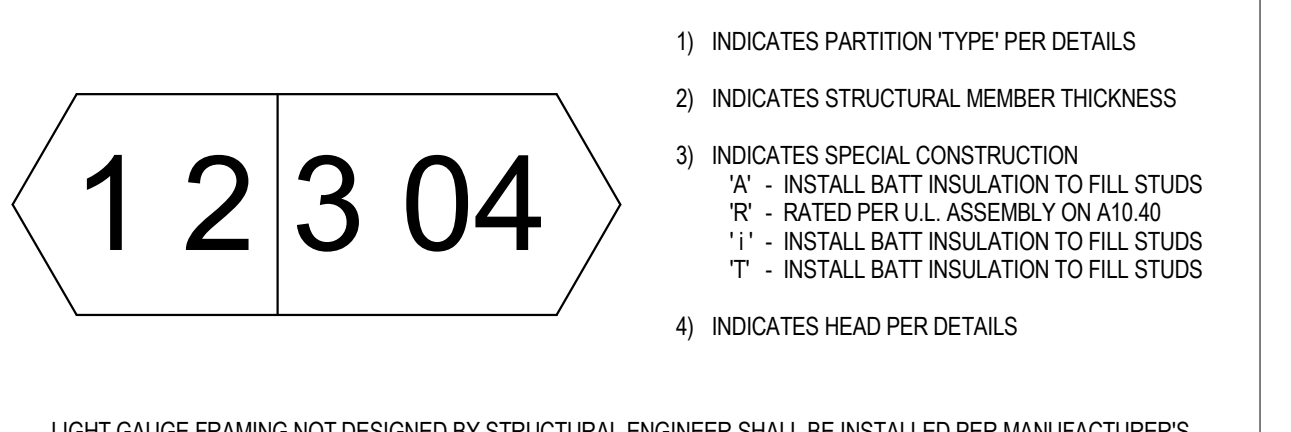
MARK	STUD SIZE	OVERALL
A0	7/8"	1 1/2"
A1	1 5/8"	2 1/4"
A2	2 1/2"	3 1/8"
A3	3 5/8"	4 1/4"
A6	6"	6 5/8"
A8	8"	8 5/8"

3 PARTITION TYPE 'B'
12\"/>



2 PARTITION TYPE 'A'
12\"/>

1 PARTITION GENERAL NOTES
12\"/>



- A LIGHT GAUGE FRAMING NOT DESIGNED BY STRUCTURAL ENGINEER SHALL BE INSTALLED PER MANUFACTURER'S RECOMMENDATIONS GIVEN SPAN. PROVIDE BRACING AND ATTACHMENT OF SHEATHING PER MANUFACTURER.
- B THE STRUCTURAL ENGINEER OF RECORD DOES NOT SIZE OR DESIGN LIGHT GAUGE CONSTRUCTION BUT IS RESPONSIBLE FOR REVIEWING CALCULATIONS OF LIGHT GAUGE ENGINEER.
- C THE ARCHITECT OF RECORD DOES NOT DESIGN LIGHT GAUGE CONSTRUCTION. ANY MEMBER SIZES SHOWN OR FRAMING INDICATED EXPRESS DESIGN INTENT BUT DO NOT CONSTITUTE A COMPLETE LIGHT GAUGE DESIGN.
- D INSTALL FRAMING AND GYPSUM BOARD TO OFFSET AROUND STRUCTURAL MEMBERS OR OTHER OBSTRUCTIONS AND MAINTAIN ACOUSTICAL OR RATED CONSTRUCTION AS REQUIRED.
- E DO NOT INSTALL GYPSUM BOARD IN DIRECT CONTACT WITH FLOOR SLAB. SHIM ALL GYPSUM BOARD 1/2" OFF THE FLOOR. AT PARTITIONS THAT ARE NOT ACOUSTICAL OR RATED, INSTALL A PLASTIC NON-POROUS SHIM AT ACOUSTICAL PARTITIONS. FILL GAP WITH ACOUSTICAL SEALANT. AT RATED PARTITIONS, FILL GAP WITH FIRE CALK.
- F INSTALL WATER RESISTANT GYPSUM BOARD AT ALL WALLS THAT RECEIVE TILE AND ALL WALLS THAT HAVE PLUMBING PENETRATIONS INCLUDING, BUT NOT LIMITED TO, RESTROOM, KITCHEN AND BAR WALLS.
- H ALL RATED PARTITIONS ARE TO BE CONSTRUCTED PER NOTED U.L. ASSEMBLY GUIDELINES.
- I INSTALL WATERPROOFING MEMBRANE AT BASE OF WALLS IN RESTROOMS, KITCHEN, BARS AND JANITOR CLOSETS PER [4 / A20.10] AND [9 / A90.10].

REV.	DATE	ISSUE FOR	ISSUE TITLE
	05.12.17	ISSUE FOR PERMIT	
	05.24.17	ISSUE FOR BID	



CINERGY AMARILLO

PARTITION AND PLAN
DETAILS

ARA007 PROJECT NUMBER **A22.00** SHEET NUMBER