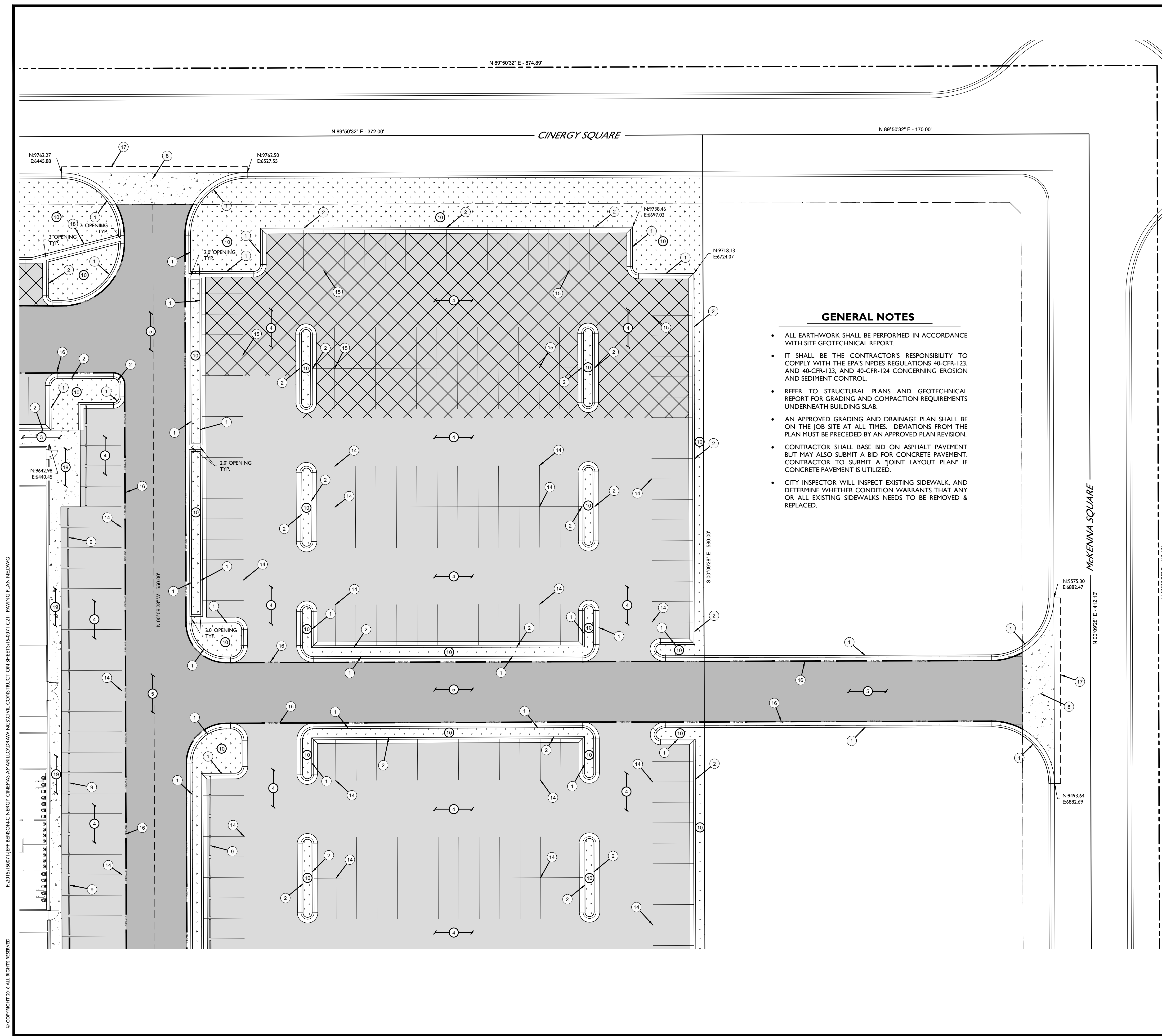


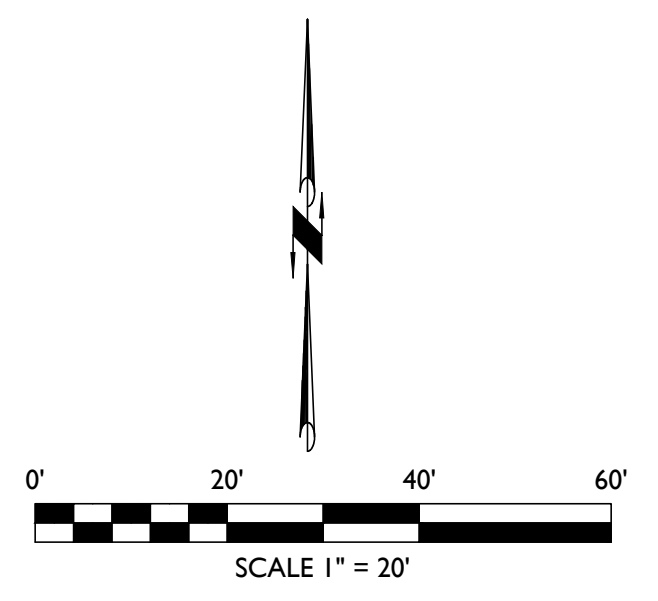
F:\2015\15007 JEFF BENSON-CINERGY CINEMAS AMARILLO\DRAWINGS\CIVIL CONSTRUCTION SHEETS\15-0071 C211 PAVING PLAN NEEDING

© COPYRIGHT 2014 ALL RIGHTS RESERVED



GENERAL NOTES

- ALL EARTHWORK SHALL BE PERFORMED IN ACCORDANCE WITH SITE GEOTECHNICAL REPORT.
- IT SHALL BE THE CONTRACTOR'S RESPONSIBILITY TO COMPLY WITH THE EPA'S NPDES REGULATIONS 40-CFR-123, AND 40-CFR-123, AND 40-CFR-124 CONCERNING EROSION AND SEDIMENT CONTROL.
- REFER TO STRUCTURAL PLANS AND GEOTECHNICAL REPORT FOR GRADING AND COMPACTION REQUIREMENTS UNDERNEATH BUILDING SLAB.
- AN APPROVED GRADING AND DRAINAGE PLAN SHALL BE ON THE JOB SITE AT ALL TIMES. DEVIATIONS FROM THE PLAN MUST BE PRECEDED BY AN APPROVED PLAN REVISION.
- CONTRACTOR SHALL BASE BID ON ASPHALT PAVEMENT BUT MAY ALSO SUBMIT A BID FOR CONCRETE PAVEMENT. CONTRACTOR TO SUBMIT A "JOINT LAYOUT PLAN" IF CONCRETE PAVEMENT IS UTILIZED.
- CITY INSPECTOR WILL INSPECT EXISTING SIDEWALK, AND DETERMINE WHETHER CONDITION WARRANTS THAT ANY OR ALL EXISTING SIDEWALKS NEEDS TO BE REMOVED & REPLACED.



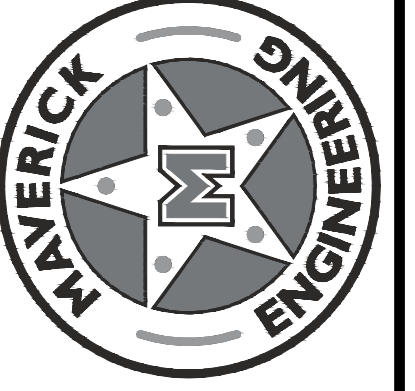
LEGEND

- DENOTES SET 1/2-INCH IRON ROD
- ⊙ DENOTES FOUND MONUMENT AS NOTED
- ⊕ DENOTES EXISTING WATER METER
- ⊗ DENOTES EXISTING WATER VALVE
- ⊕ DENOTES EXISTING MANHOLE
- ⊕ DENOTES EXISTING GAS MARKER
- ⊕ DENOTES BOUNDARY LINE
- ⊕ DENOTES BOUNDARY LINE
- ⊕ DENOTES EASEMENT LINE
- ⊕ DENOTES EXISTING CONTOURS
- S DENOTES EXISTING SEWER LINE
- ▨ DENOTES YELLOW STRIPE AREA EMPLOYEE PARKING

PAVING NOTES:

- CONSTRUCT STANDARD CURB PER THE CITY OF AMARILLO STANDARD CONSTRUCTION DETAILS, INCLUDED ON SHEET C214.
- CONSTRUCT DROP LIP CURB PER DETAIL 7, INCLUDED ON SHEET C215.
- CONSTRUCT COMMERCIAL SIDEWALK PER DETAIL 8, INCLUDED ON SHEET C215. TYPICAL WIDTH OF SIDEWALK: 5 FT. UNLESS NOTED.
- INSTALL STANDARD DUTY ASPHALT PAVEMENT PER DETAIL 2, INCLUDED ON SHEET C215.
- INSTALL HEAVY DUTY ASPHALT PAVEMENT PER DETAIL 1, INCLUDED ON SHEET C215.
- INSTALL COMMERCIAL DUMPSTER PAD SEE DETAIL INCLUDED ON SHEET C217.
- INSTALL PEDESTRIAN CURB RAMP PER CITY OF AMARILLO STANDARD CONSTRUCTION DETAIL, INCLUDED ON SHEET C214
- INSTALL COMMERCIAL DRIVEWAY PER DETAIL 4, INCLUDED ON SHEET C215.
- INSTALL PRECAST CONCRETE WHEEL STOPS PER DETAIL 9, INCLUDED ON SHEET C215.
- SEE LANDSCAPE PLANS
- SEE DETAIL 10, 11 AND 12 ON SHEET C216 FOR HANDICAP ACCESSIBLE PARKING SPACE STRIPING.
- PLACE HANDICAP SIGN AS SHOWN, SEE DETAIL 10, 11 AND 12 ON SHEET C216. FOLLOWING SITE PAVING, PAINT WITH ONE (1) COAT OF SPECIFIED PAINT, AND THEN REPAINT WITH ONE (1) ADDITIONAL COAT OF SPECIFIED PAINT JUST PRIOR TO OPENING.
- ISLAND ACCESSIBLE ROUTE AISLE SHOULD BE MARKED AS SHOWN. AISLES TO BE PAINTED WITH WHITE 4" WIDE STRIPES, SPACED AT 2 FT APART DIAGONALLY ACROSS THE AISLES, AND OUTLINED AROUND THE AISLE USING SHERWIN WILLIAMS "PROMAR ALKYD FAST DRY ZONE MARKING PAINT" OR APPROVED EQUAL. SURFACES SHOULD BE CLEAN AND DRY AT TIME OF PAINTING.
- PARKING LOT STRIPING AS SHOWN. EACH PARKING STALL SHOULD BE MARKED WITH A WHITE 4" WIDE STRIPE USING SHERWIN WILLIAMS "PROMAR ALKYD FAST DRY ZONE MARKING PAINT" OR APPROVED EQUAL. SURFACES SHOULD BE CLEAN AND DRY AT TIME OF PAINTING. WIDTH AND LENGTH OF SPACES AND AISLES PER SITE DIMENSIONAL PLAN, SHEET C200.
- PARKING LOT TO BE STRIPED FOLLOWING SITE PAVING WITH ONE (1) COAT OF SPECIFIED PAINT, AND THEN STRIPED WITH ONE (1) ADDITIONAL COAT OF SPECIFIED PAINT JUST PRIOR TO OPENING.
- PARKING LOT STRIPING AS SHOWN. EACH PARKING STALL SHOULD BE MARKED WITH A YELLOW 4" WIDE STRIPE USING SHERWIN WILLIAMS "PROMAR ALKYD FAST DRY ZONE MARKING PAINT" OR APPROVED EQUAL. SURFACES SHOULD BE CLEAN AND DRY AT TIME OF PAINTING. WIDTH AND LENGTH OF SPACES AND AISLES PER SITE DIMENSIONAL PLAN, SHEET C200.
- PARKING LOT TO BE STRIPED FOLLOWING SITE PAVING WITH ONE (1) COAT OF SPECIFIED PAINT, AND THEN STRIPED WITH ONE (1) ADDITIONAL COAT OF SPECIFIED PAINT JUST PRIOR TO OPENING.
- IDENTIFY FIRE LANE WITH RED PAINTED STRIPES AND WHITE LETTERS STATING "FIRE LANE-NO PARKING" AT 25 FT. O.C. WHERE SHOWN (UPON COMPLETION OF THE PARKING LOT PAVING VERIFY THE EXACT LOCATION WITH THE FIRE MARSHALL OFFICE PRIOR TO PAINTING).
- CONTRACTOR TO SAWCUT AND REMOVE TWO (2) FEET MINIMUM EXISTING CURB AND GUTTER LIP. THE EXISTING ASPHALT PAVEMENT REPLACE IS TO MATCH CURRENT SECTION OF EXISTING ROADWAY. CONTRACTOR IS TO CLEANLY TIE INTO EXISTING CURB. DETERMINATION OF EXACT LOCATION MAY NEED TO BE FIELD VERIFIED BY CONTRACTOR. CONTRACTOR TO NOTIFY ENGINEER OF RECORD OF ANY DAMAGE OR TIE IN PROBLEMS.
- INSTALL DRAINAGE FLUME, SEE DETAIL 13, INCLUDED ON SHEET 216.
- INSTALL MONOLITHIC SIDEWALK AS PER DETAIL 5, INCLUDED ON SHEET 215.
- INSTALL HANDICAP SIGN PER DETAIL 10, SEE SHEET C216, OR MOUNT DIRECTLY TO BUILDING.
- TRANSITION FROM 6" CURB TO CONCRETE FLUSH WITH PAVEMENT. SEE DIMENSIONAL SHEET C200 FOR LENGTH.
- SEE ARCHITECTURAL PLAN FOR RAMP DESIGN.
- SEE ARCHITECTURAL PLAN FOR PATIO LAYOUT DESIGN.

MAVERICK ENGINEERING
 1909 West Wall Street, Suite "K"
 Midland, Texas 79701 FIRM: F-15089
 Tel: (432) 262-0999 Fax: (432) 262-0989
 www.Maverick-Eng.com



DATE	
APPR.	
BY	
REVISIONS	
Δ	
DRAWN BY: TDE	
CHECKED BY: ALM	
APPROVED BY: ALM	
DATE: 04/14/2016	
JOB: 2015-0071	

PAVING PLAN NORTHEAST CINERGY CINEMAS
 BEING A 9.7 TRACT OUT OF LOT 2, BLOCK 2, SECTION 63, BS&F SURVEY, CITY OF AMARILLO, POTTER COUNTY, TEXAS.



Know what's below.
 Call before you dig.

Andrew L. Mellen
 ANDREW L. MELLEN
 106572
 LICENSED PROFESSIONAL ENGINEER
 03/09/2017