



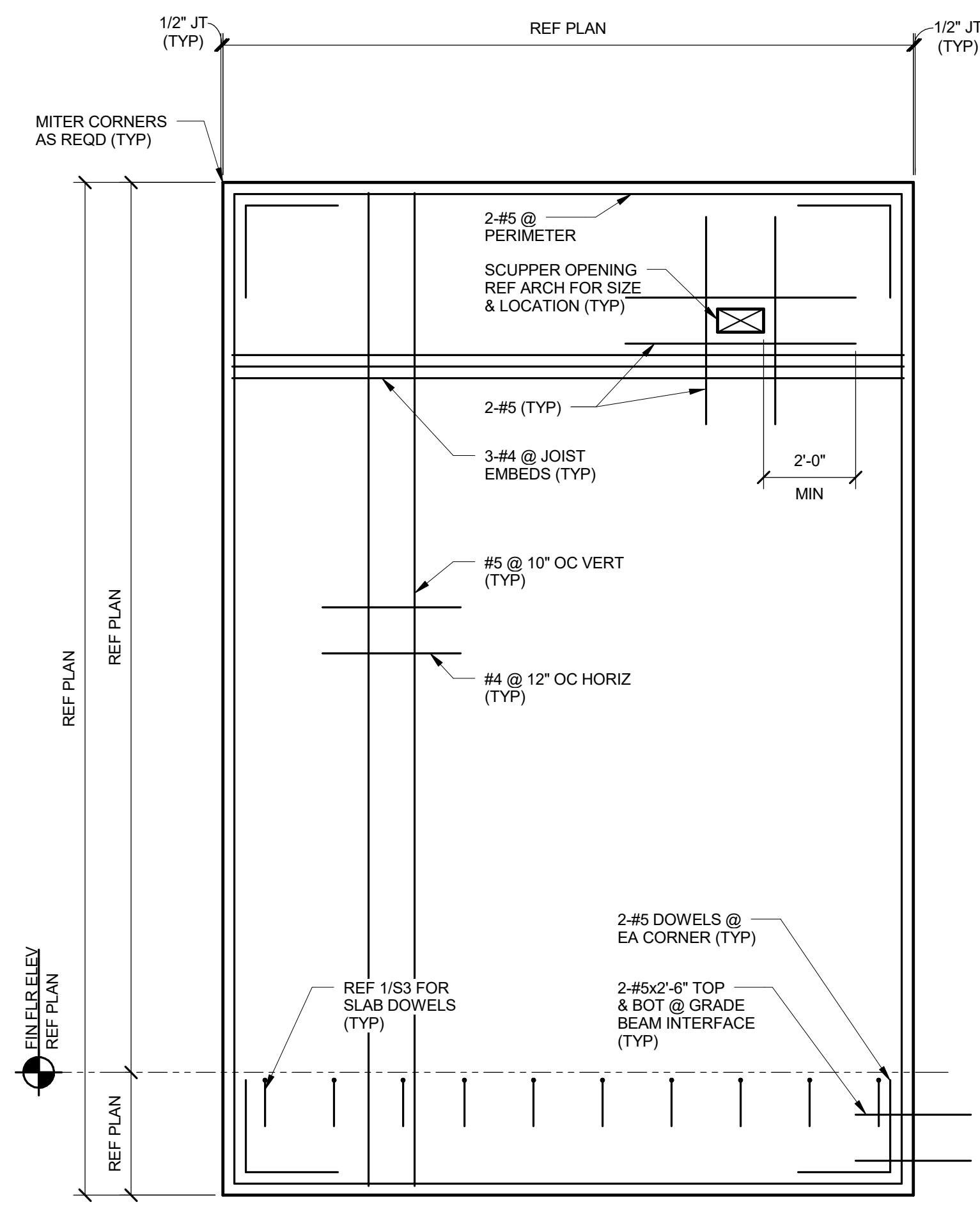
ARCHITECT
 SG Studio Collaborative, LLC.
 800 Jackson St., Suite 500
 Dallas, TX 75202
 Ian Means 214-646-1508

STRUCTURAL ENGINEER
 Hunt & Joiner, Inc.
 1120 Capital of Texas Highway Suite 120
 Austin, TX 78746
 Colin Edwards 512-358-8788

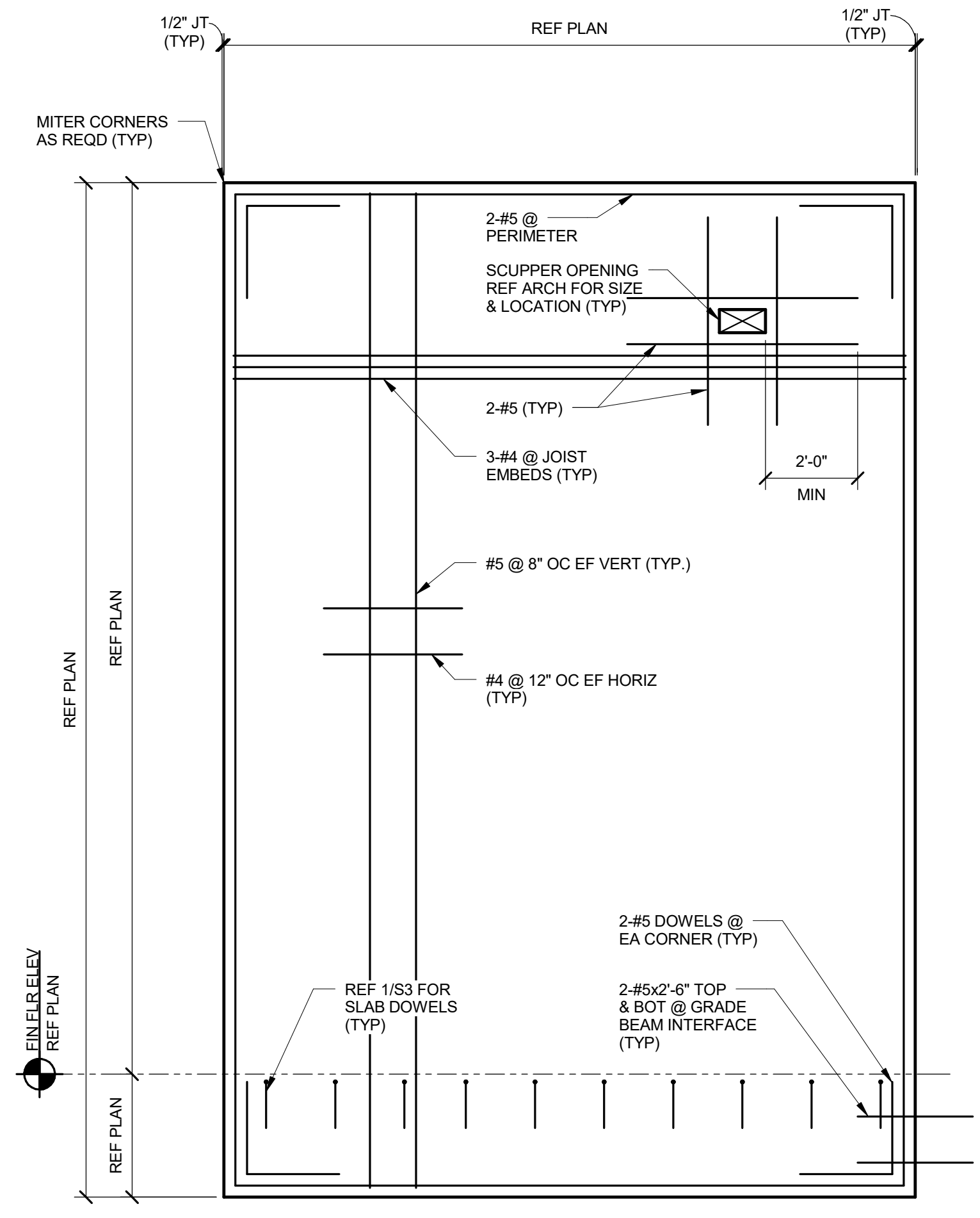
MEP ENGINEER
 Envirodesign
 900 Ranch Road 620 South, Suite C101-301
 Austin, TX 78734
 Sam Patton 512-693-9015

CIVIL ENGINEER
 Maverick Engineering
 1909 West Wall Street, Suite K
 Midland, TX 79701
 Andrew Mallon 432-262-0999

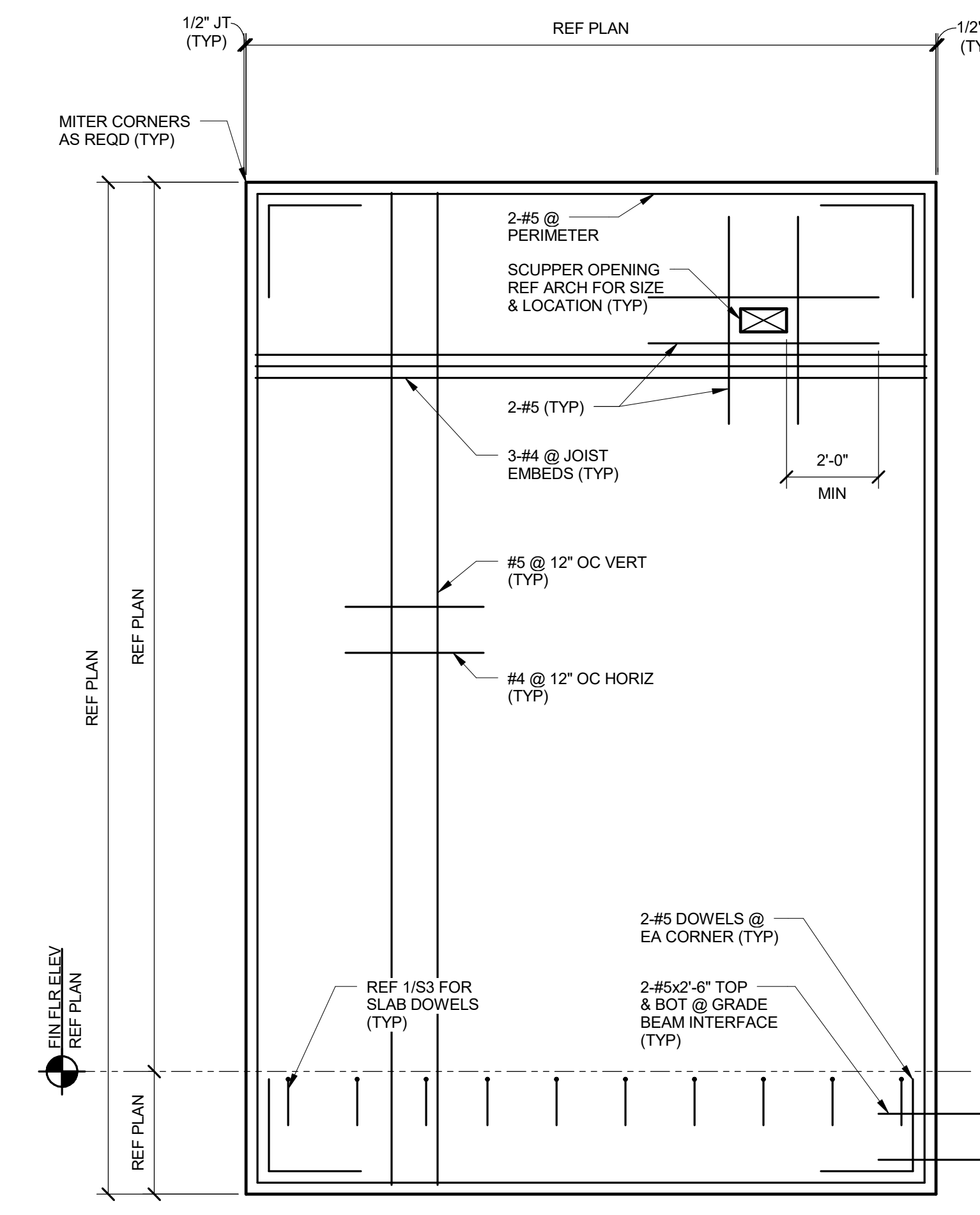
OWNER
 Cinergy Cinemas & Entertainment
 5720 LBJ Freeway, Suite 625
 Dallas, TX 75240
 Jeffrey Benson 469-804-7475



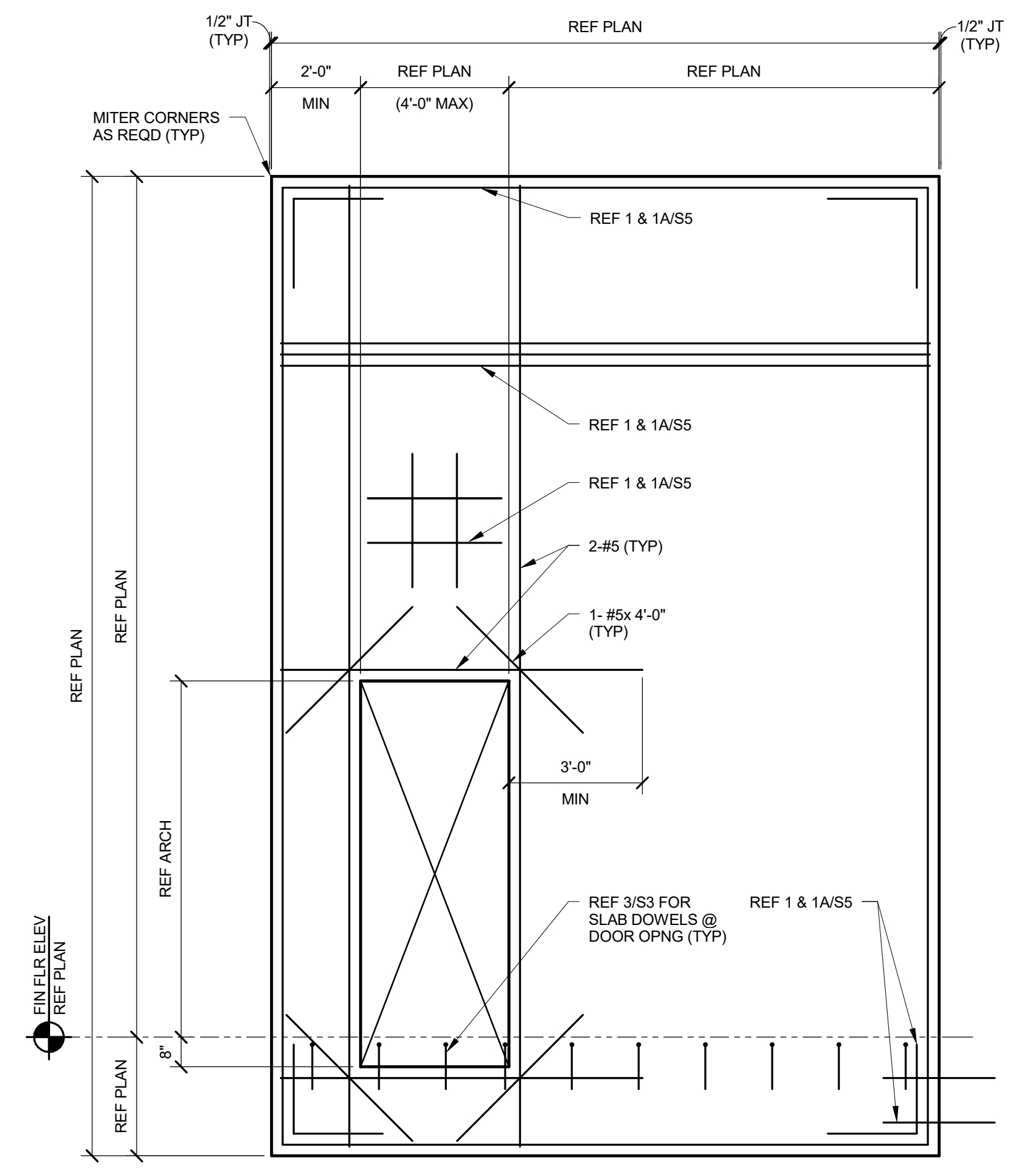
1 TYPICAL 8" PANEL REINFORCEMENT (U.N.O.)
 3/8" = 1'-0"



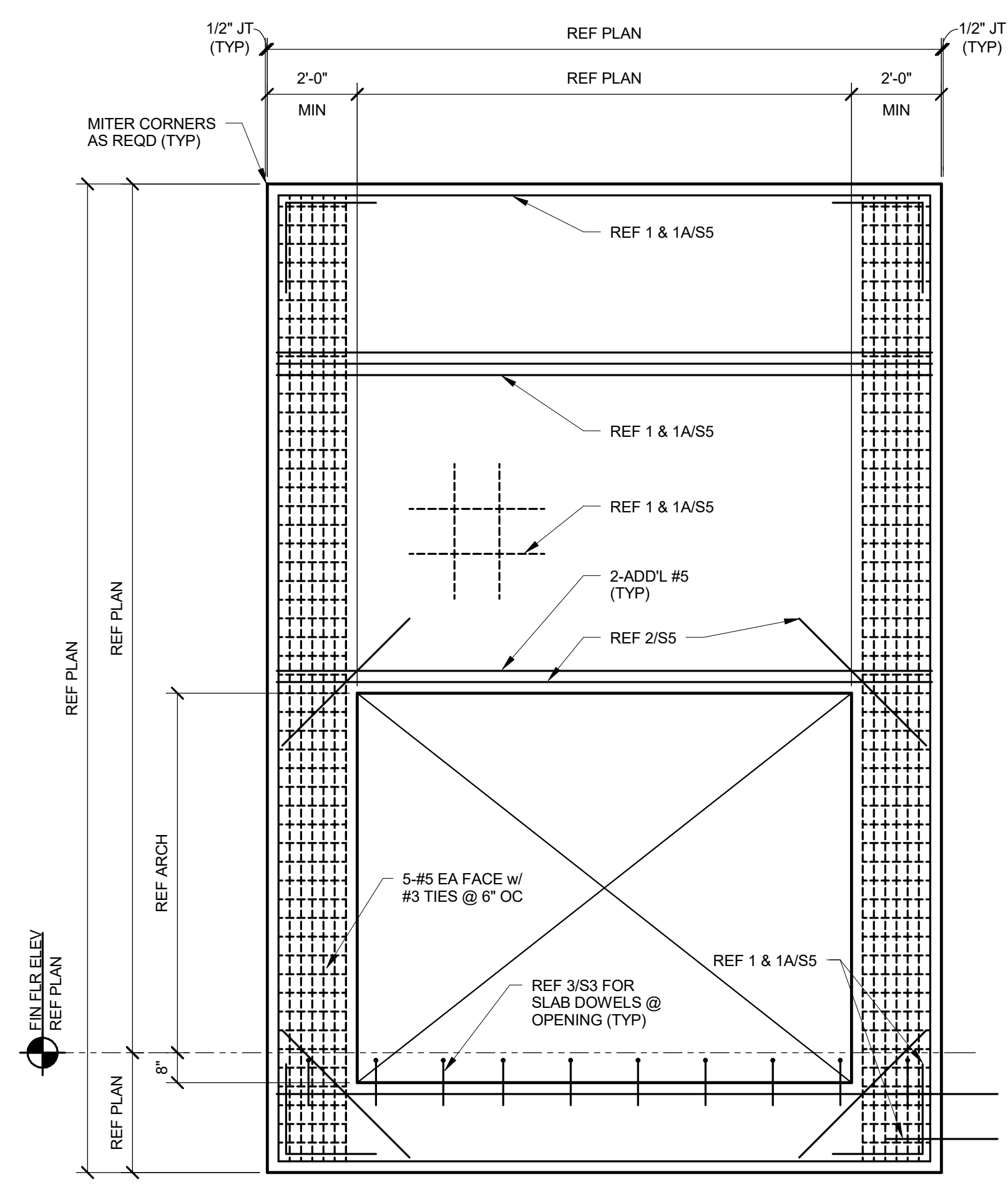
1A 8" PANEL REINFORCEMENT (PANEL P43-P53)
 3/8" = 1'-0"



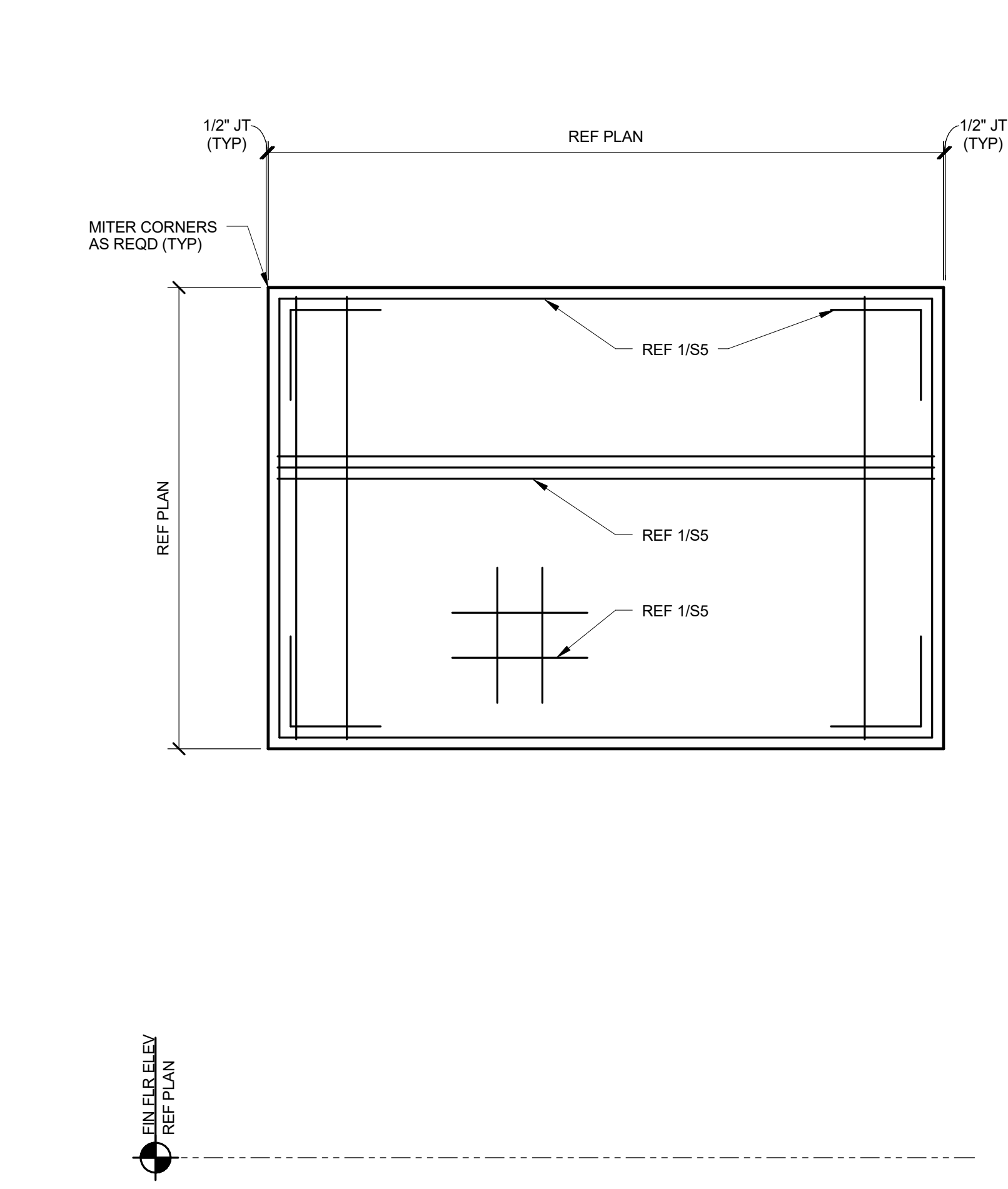
1B TYPICAL 6 1/2" & 7 1/4" PANEL REINF.
 3/8" = 1'-0"



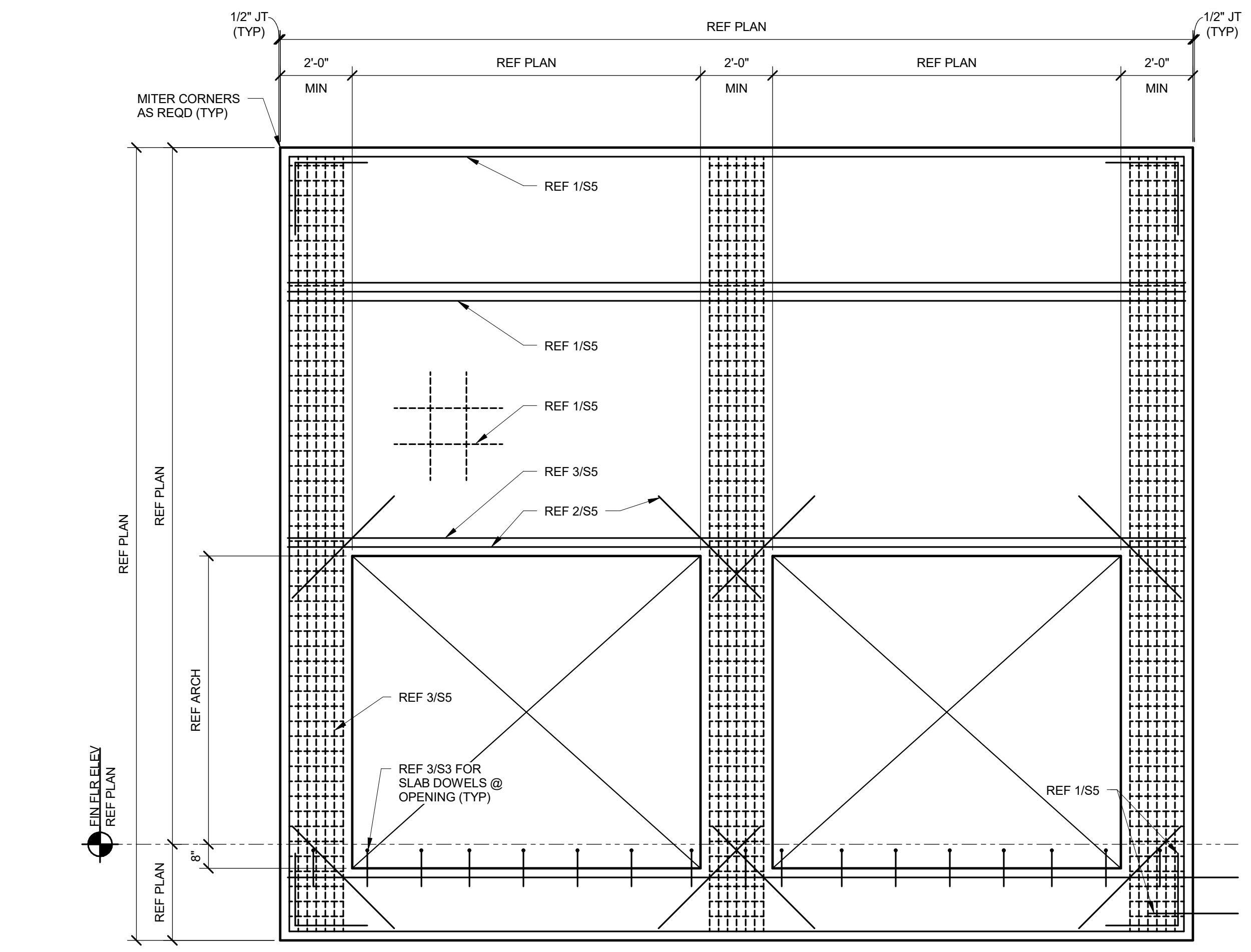
2 TYPICAL PANEL WITH OPENING
 3/8" = 1'-0"



3 TYPICAL PANEL WITH OPENING
 3/8" = 1'-0"

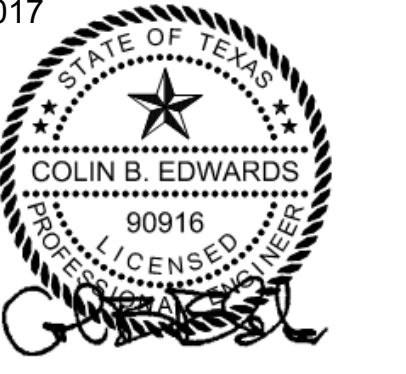


4 TYPICAL SPANDREL PANEL
 3/8" = 1'-0"



5 TYPICAL PANEL WITH 2 OPENINGS
 3/8" = 1'-0"

06-12-2017



PROJECT NO: 10284 TX REG#02423
HUNT & JOINER, INC.
 Consulting Structural Engineers

REV.	DATE	ISSUE FOR	ISSUE TITLE
	05-24-17	ISSUE FOR BID	