



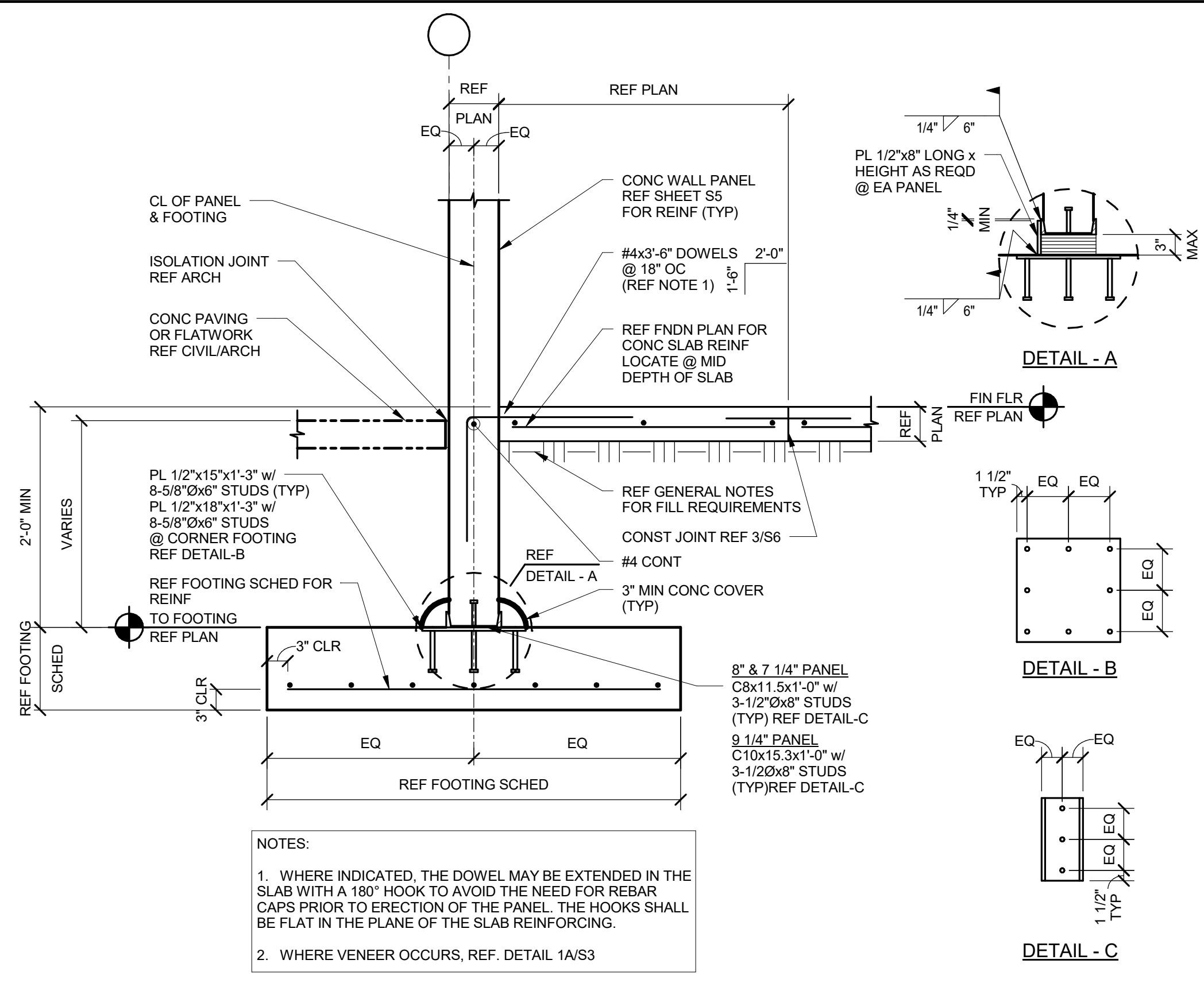
ARCHITECT
 SG Studio Collaborative, LLC.
 800 Jackson St., Suite 500
 Dallas, TX 75202
 Ian Meares 214-646-1508

STRUCTURAL ENGINEER
 Hunt & Joiner, Inc.
 1120 Capital of Texas Highway Suite 120
 Austin, TX 78746
 Colin Edwards 512-358-8788

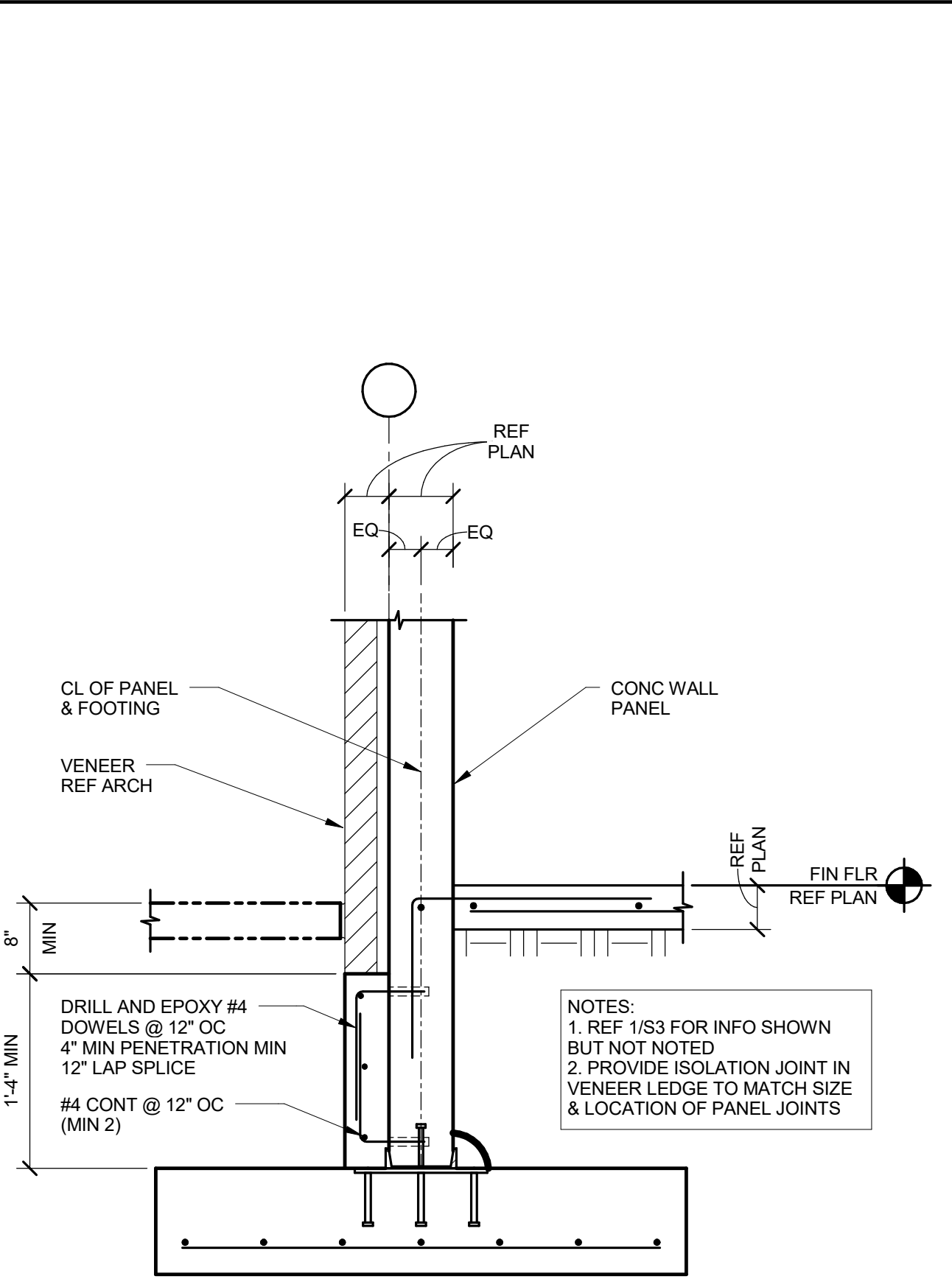
MEP ENGINEER
 Envirodesign
 900 Ranch Road 620 South, Suite C101-301
 Austin, TX 78734
 Sam Patton 512-693-9015

CIVIL ENGINEER
 Maverick Engineering
 1909 West Wall Street, Suite K
 Midland, TX 79701
 Andrew Melton 432-262-0999

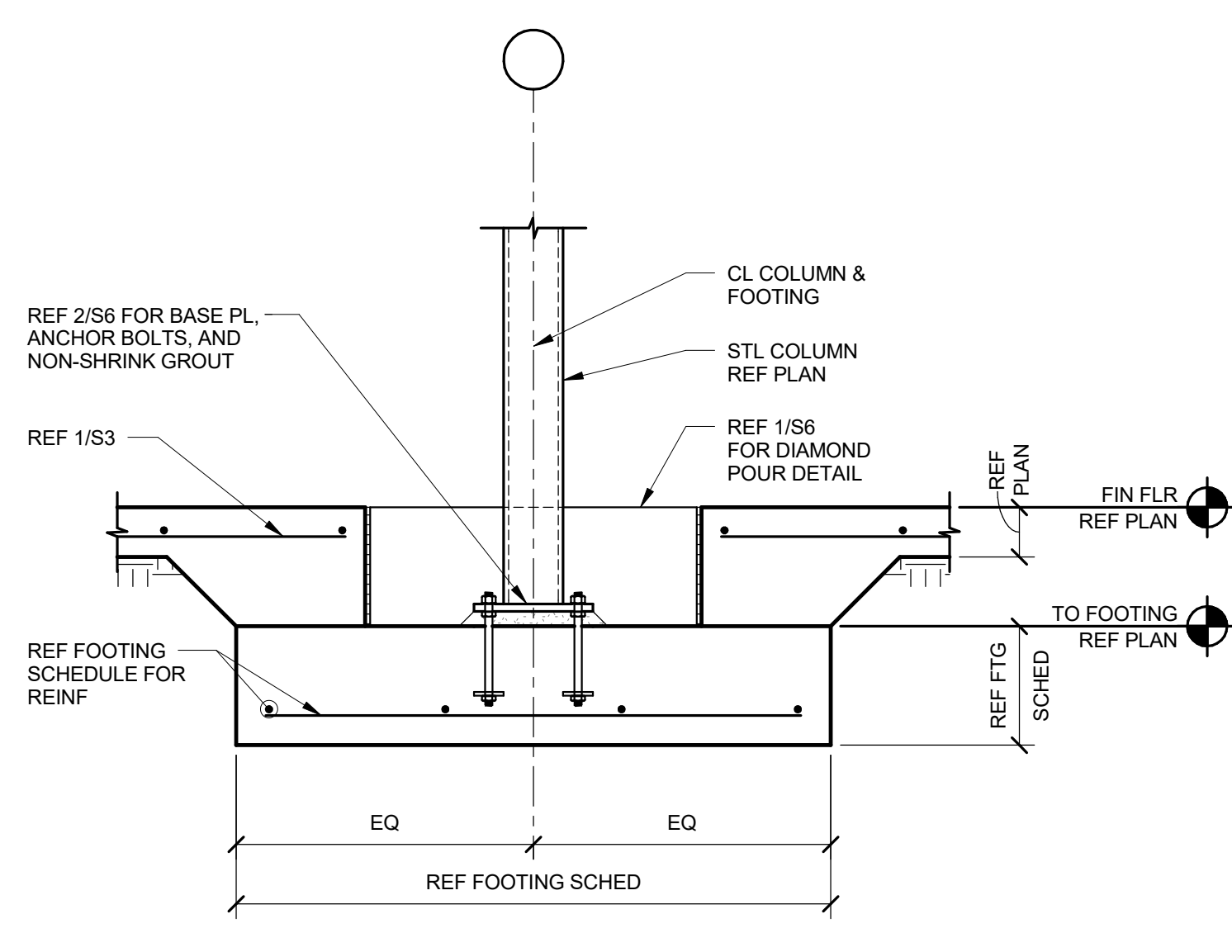
OWNER
 Cinergy Cinemas & Entertainment
 5720 LBJ Freeway, Suite 625
 Dallas, TX 75240
 Jeffrey Benson 469-804-7475



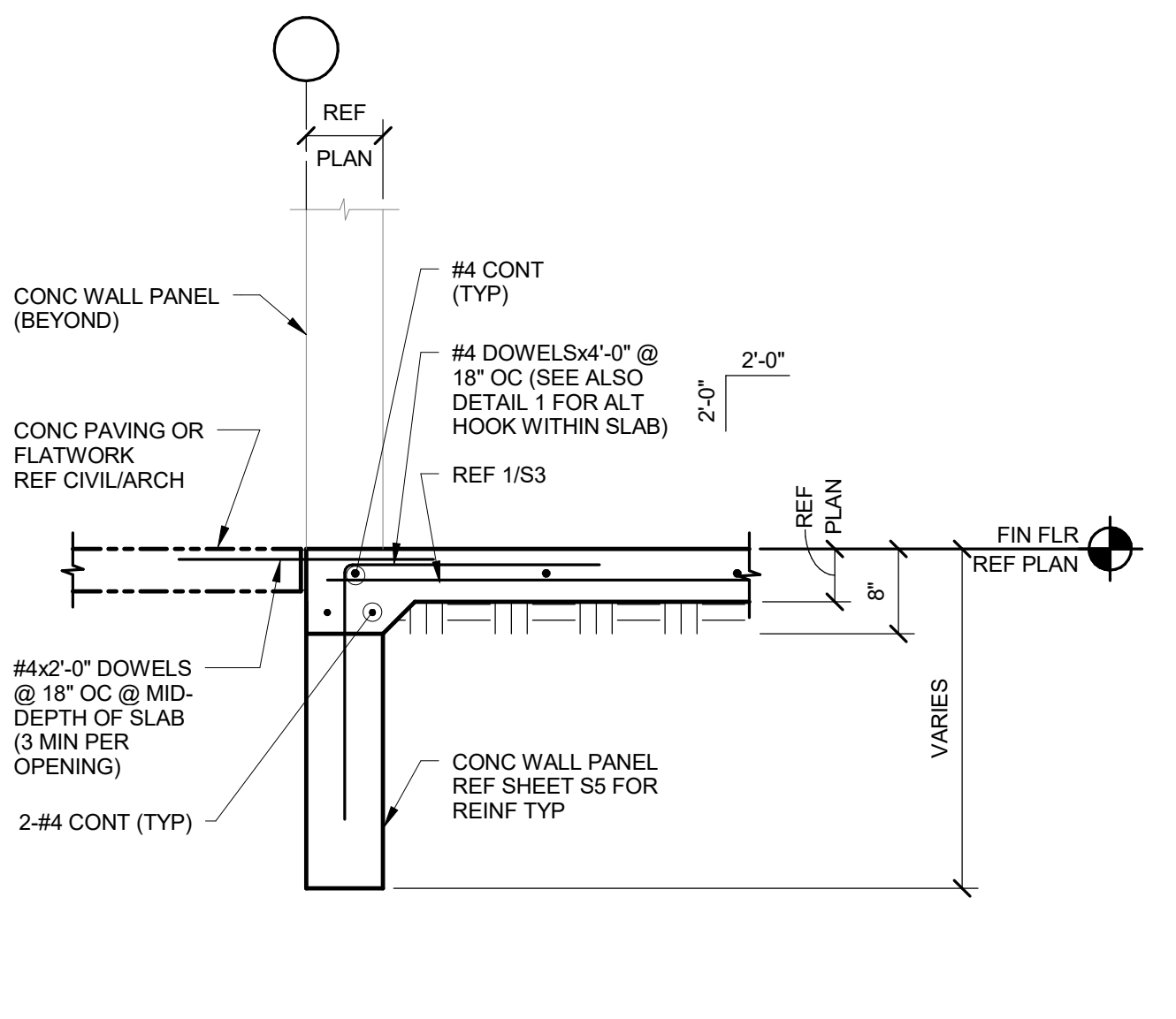
1 EXTERIOR FOOTING SECTION
 3/4" = 1'-0"



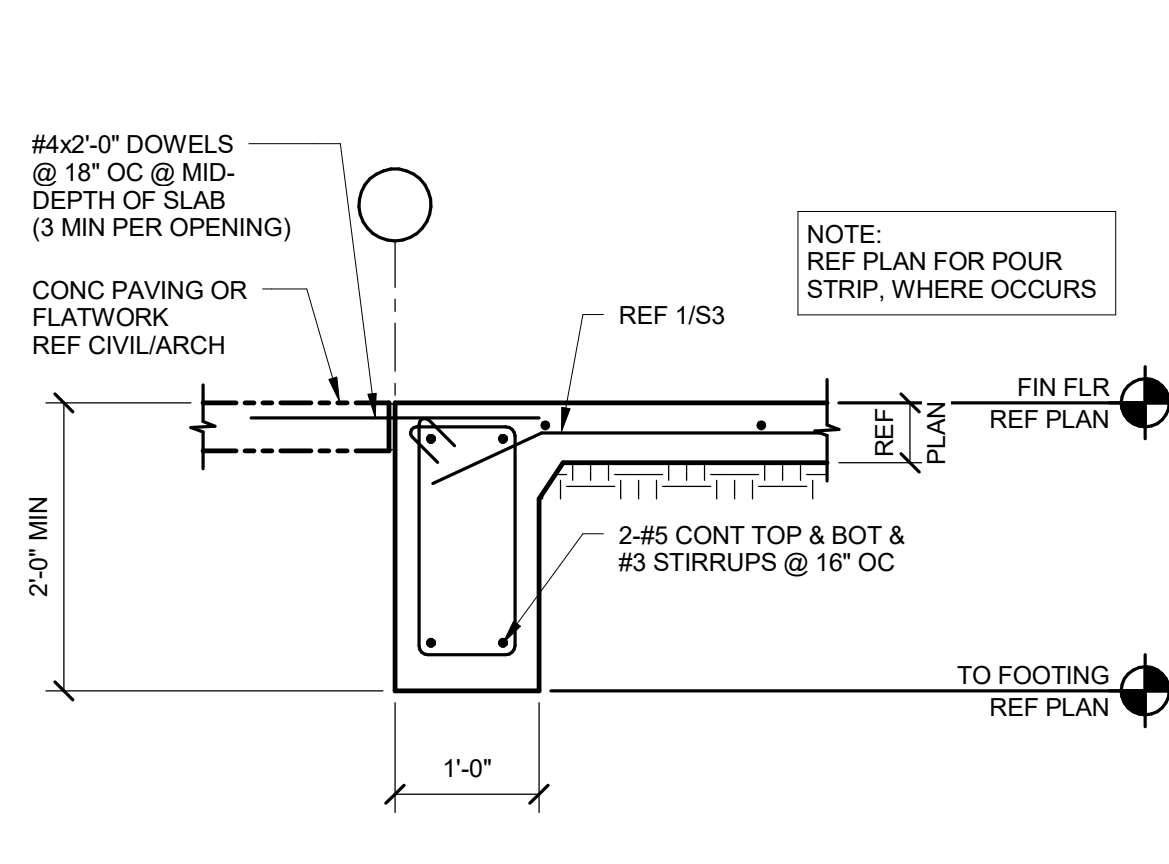
2 VENEER LEDGE SECTION
 3/4" = 1'-0"



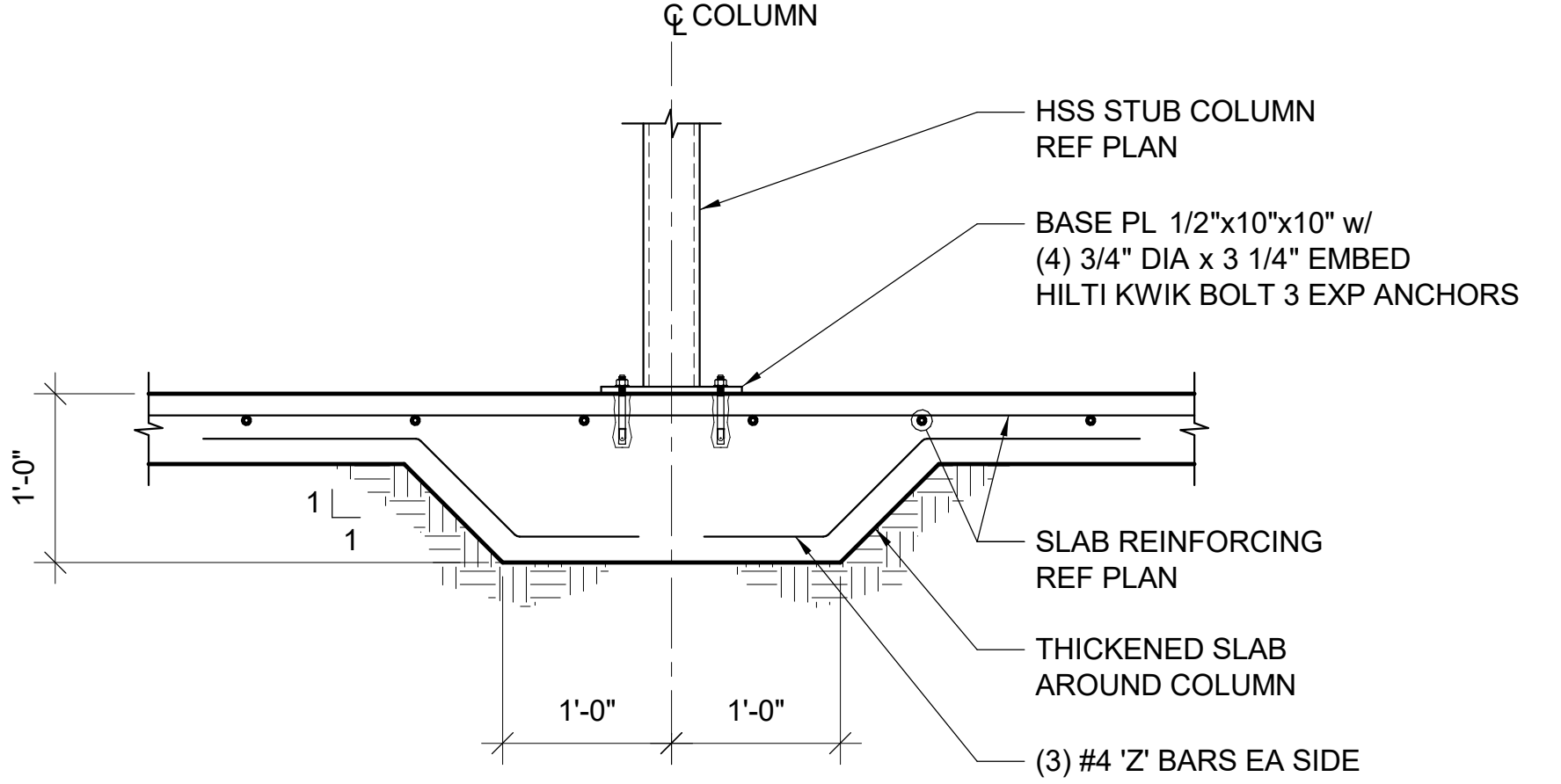
3 COLUMN FOOTING SECTION
 3/4" = 1'-0"



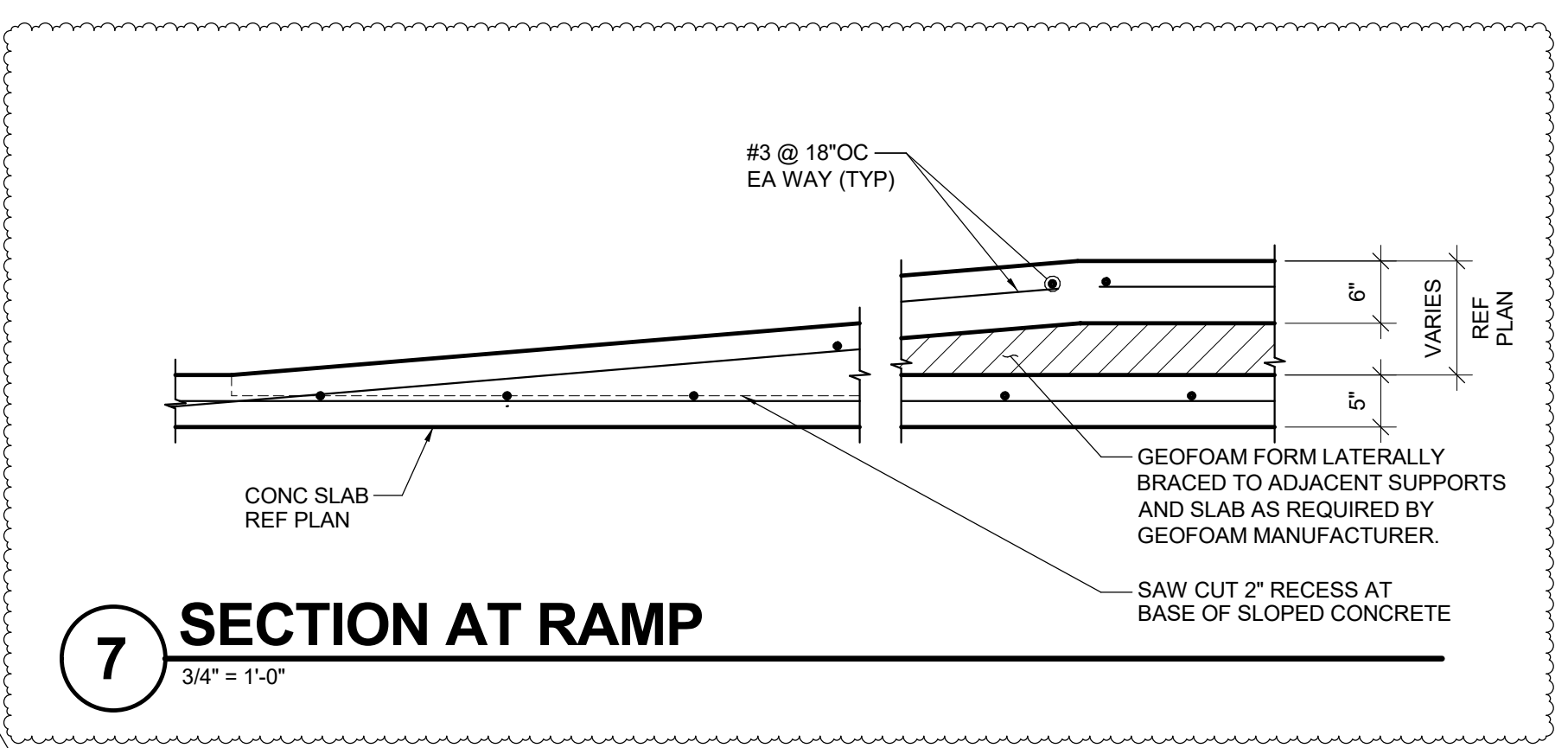
4 PANEL OPENING SECTION
 3/4" = 1'-0"



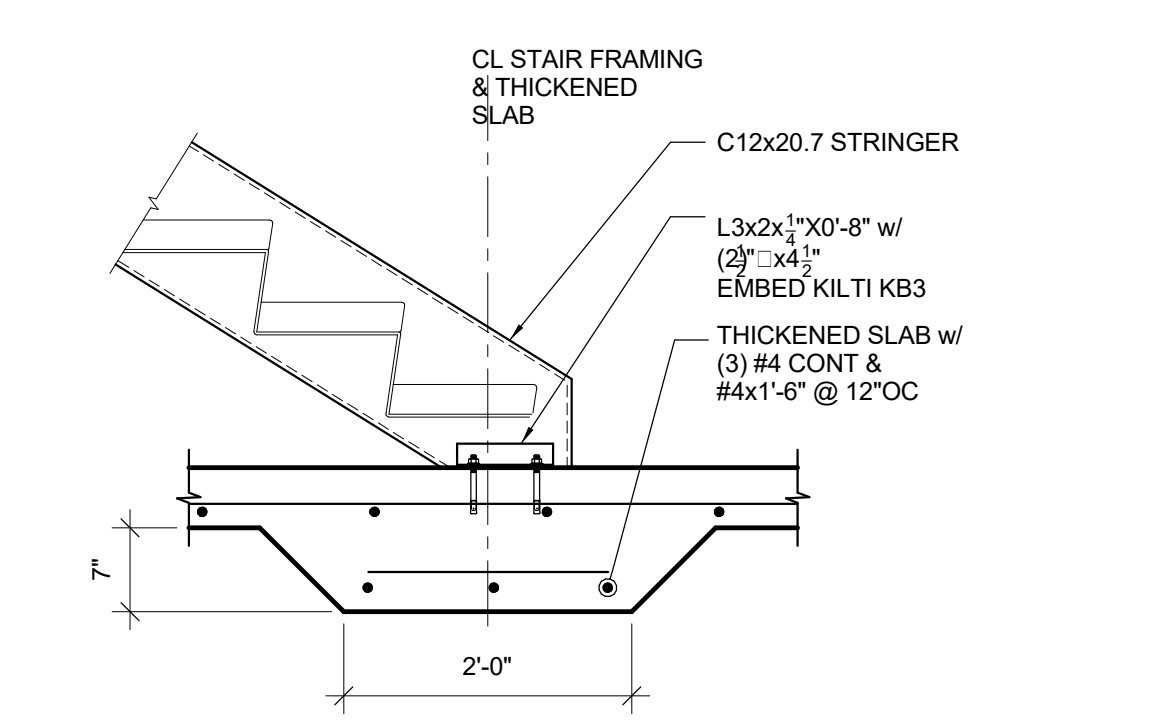
5 GRADE BEAM SECTION
 3/4" = 1'-0"



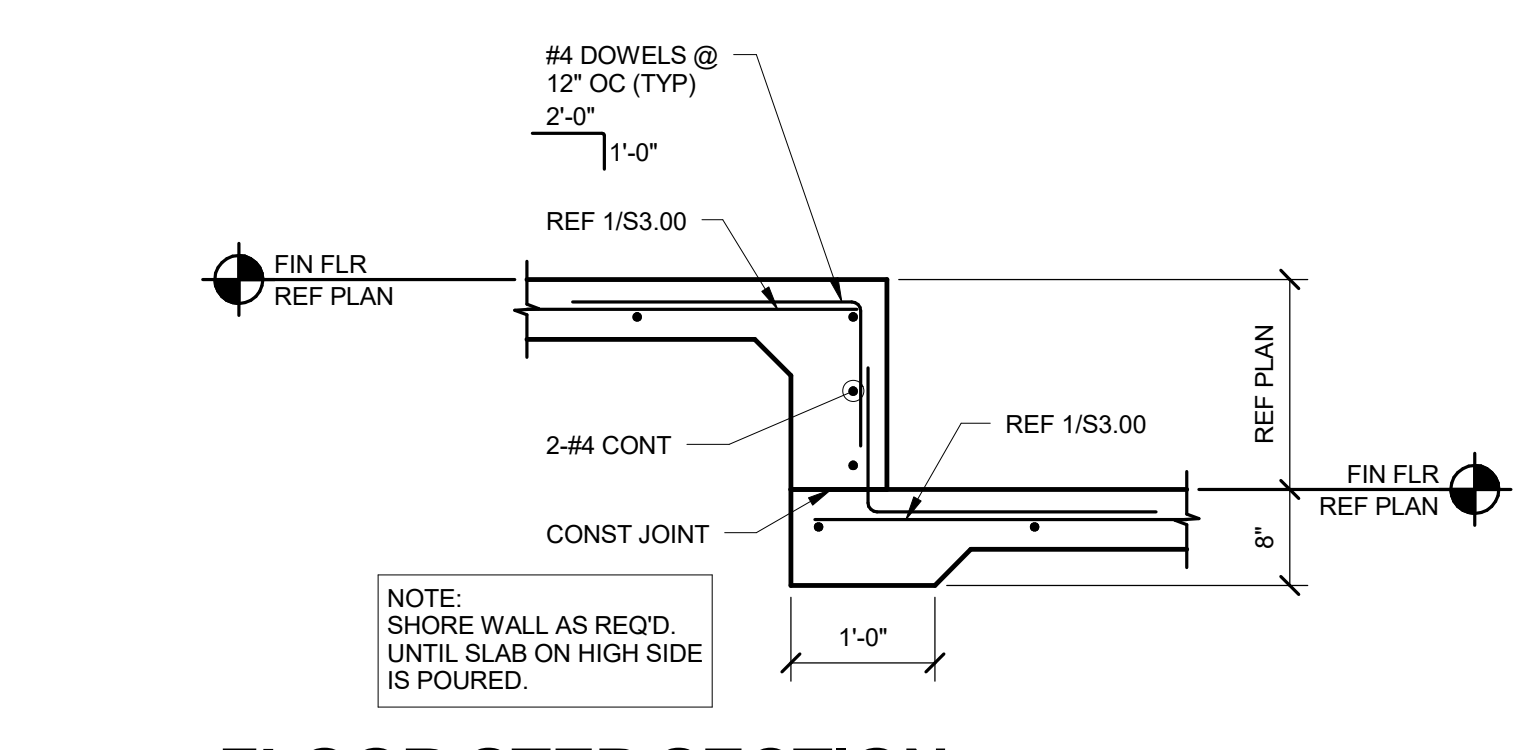
6 THICKENED SLAB AT STUB COLUMNS
 1" = 1'-0"



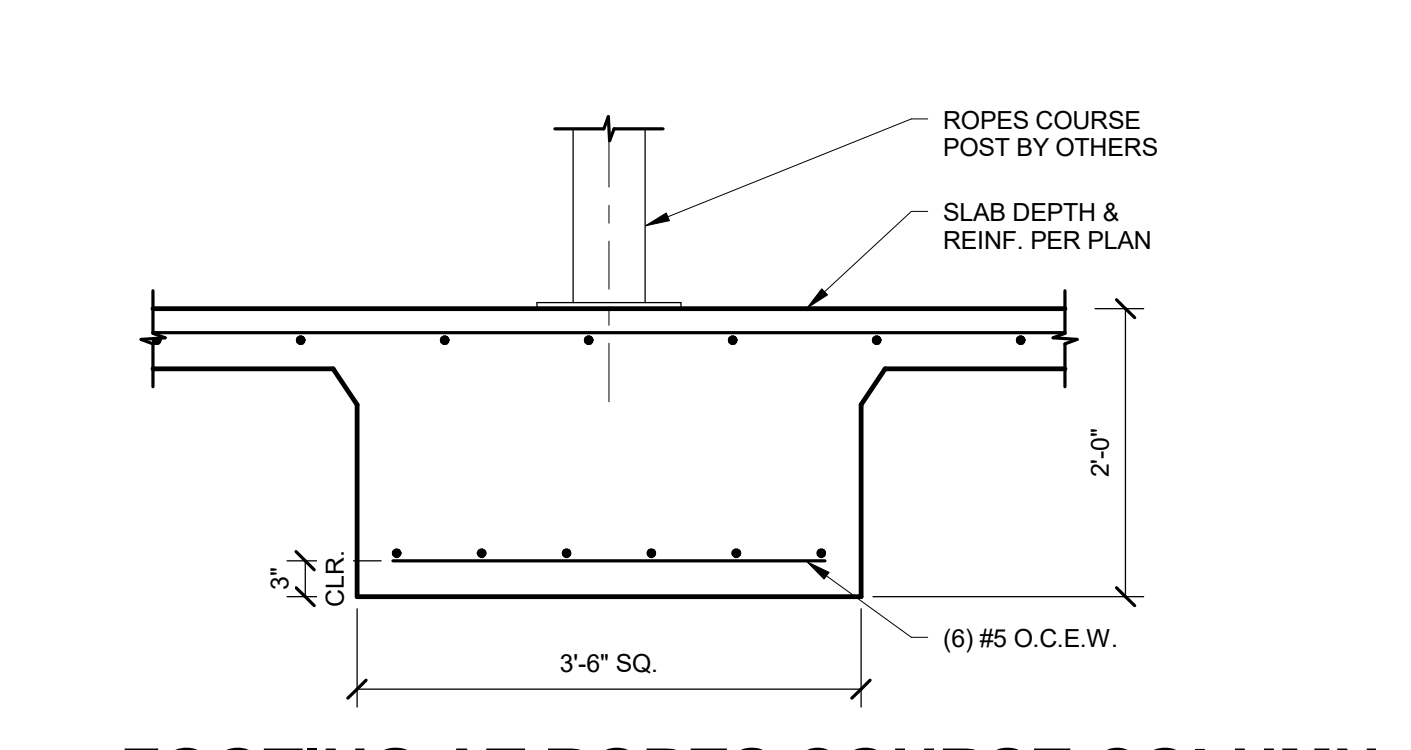
7 SECTION AT RAMP
 3/4" = 1'-0"



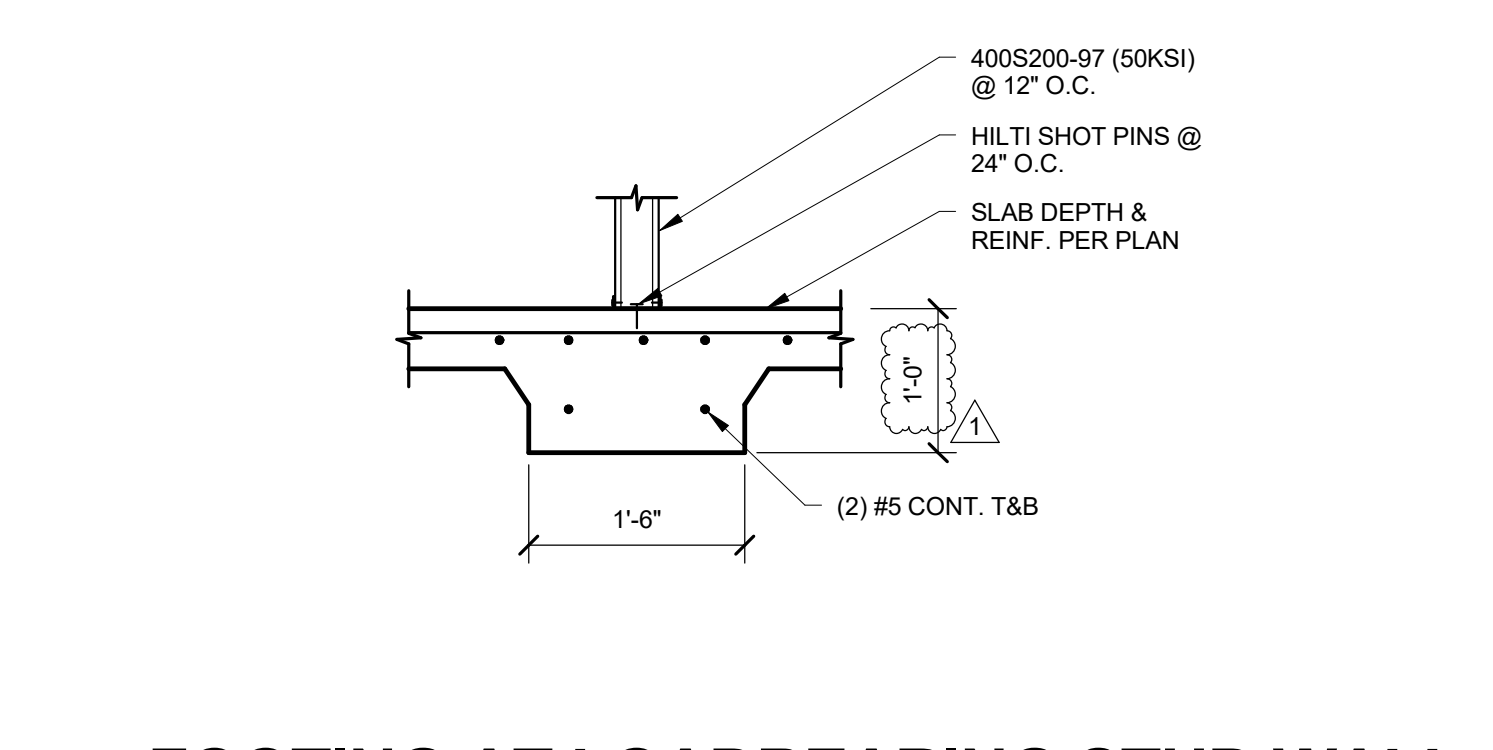
8 STRINGER AT FOUNDATION
 3/4" = 1'-0"



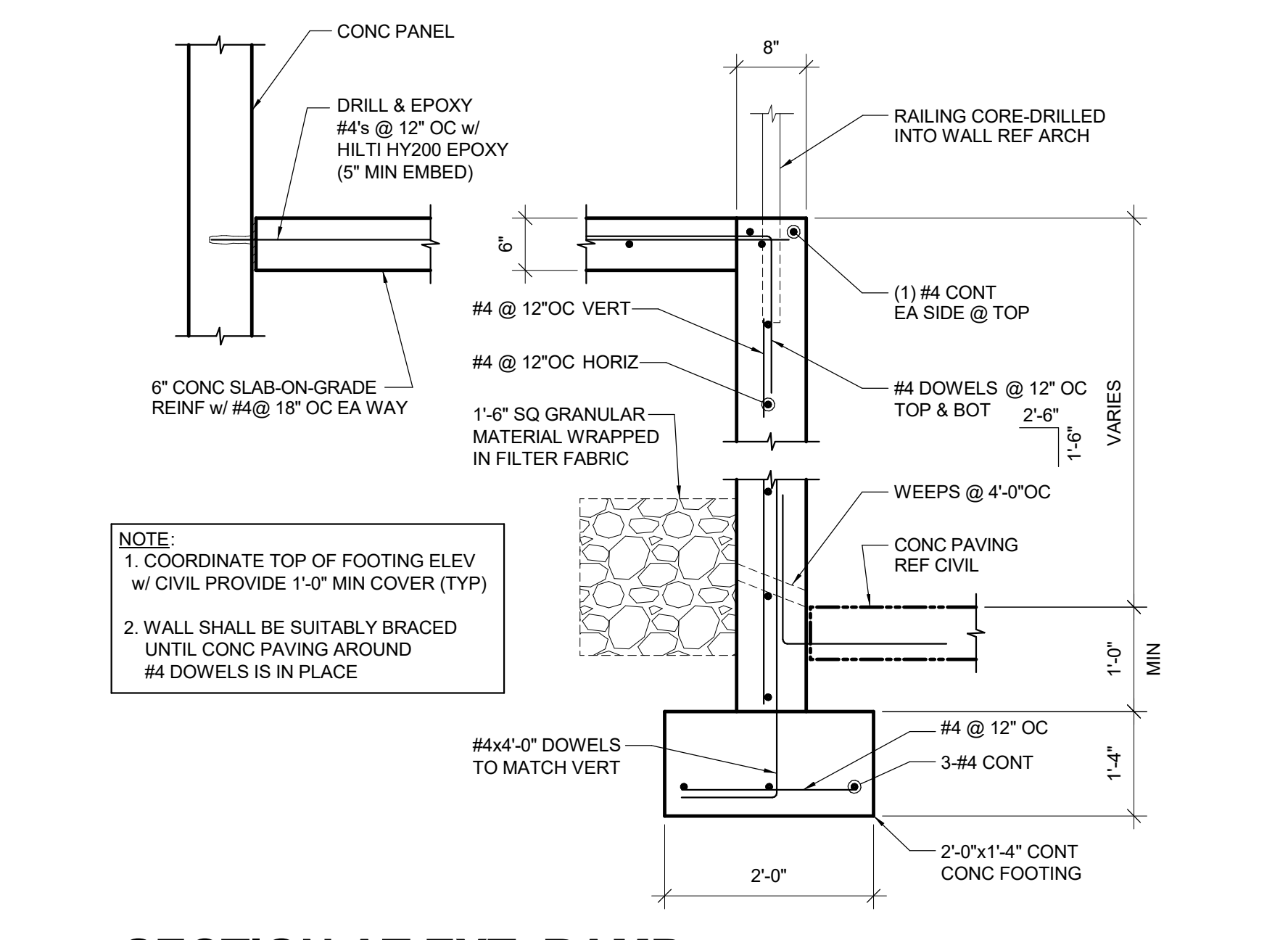
9 FLOOR STEP SECTION
 3/4" = 1'-0"



10 FOOTING AT ROPES COURSE COLUMN
 3/4" = 1'-0"

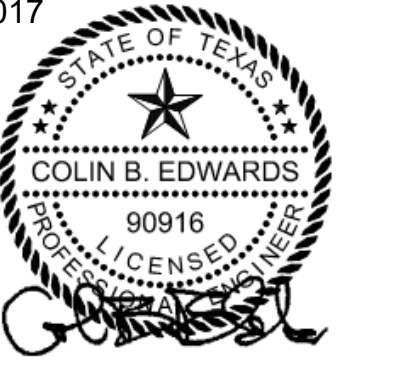


11 FOOTING AT LOBBY BEARING STUD WALL
 3/4" = 1'-0"



12 SECTION AT EXT. RAMP
 3/4" = 1'-0"

06-12-2017



HUNT & JOINER, INC.
 Consulting Structural Engineers

REV.	DATE	ISSUE FOR	ISSUE TITLE
1	05-24-17	ISSUE FOR BID	
1	06-12-17	ADDENDUM 1	

CINERGY AMARILLO

TYPICAL FOUNDATION SECTIONS

XXXXX PROJECT NUMBER **S3** SHEET NUMBER