



ARCHITECT  
SG Studio Collaborative, LLC.  
800 Jackson St., Suite 500  
Dallas, TX 75202  
Ian Means 214-646-1508

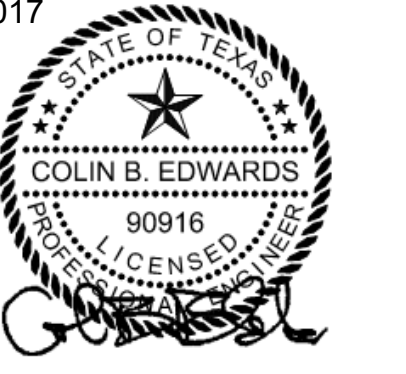
STRUCTURAL ENGINEER  
Hunt & Joiner, Inc.  
1120 Capital of Texas Highway Suite 120  
Austin, TX 78746  
Colin Edwards 512-358-8788

MEP ENGINEER  
Envirodesign  
900 Ranch Road 620 South, Suite C101-301  
Austin, TX 78734  
Sam Fatten 512-693-9015

CIVIL ENGINEER  
Maverick Engineering  
1909 West Wall Street, Suite K  
Midland, TX 79701  
Andrew Melton 432-262-0999

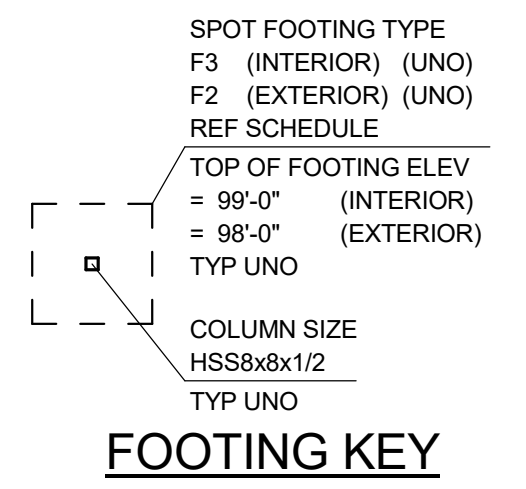
OWNER  
Cinergy Cinemas & Entertainment  
5720 LBJ Freeway, Suite 625  
Dallas, TX 75240  
Jeffrey Benson 469-804-7475

06-12-2017



PROJECT NO. 10284 TX REG. NO. 90916  
HUNT & JOINER, INC.  
Consulting Structural Engineers

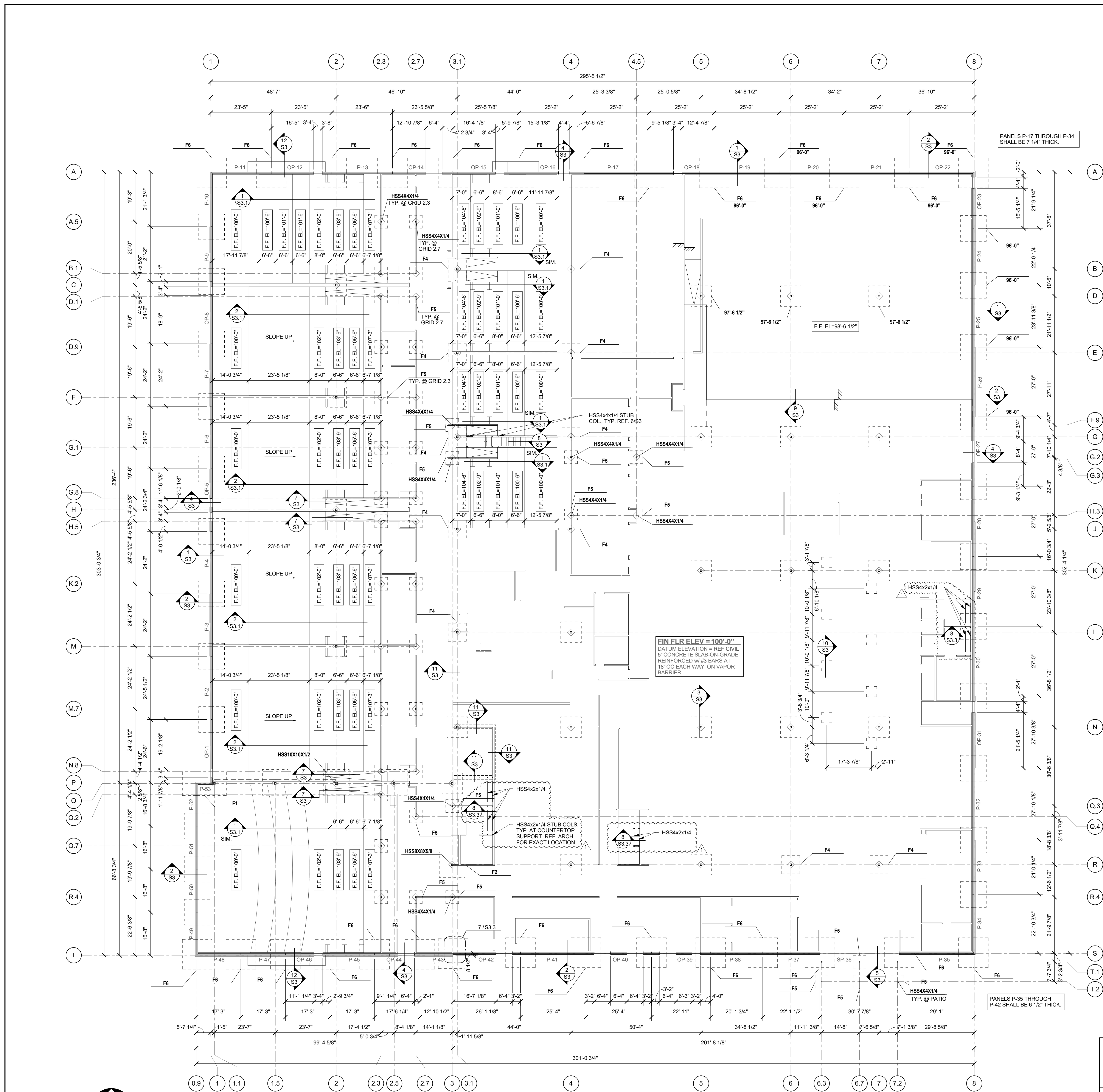
REV.	DATE	ISSUE FOR	ISSUE TITLE
1	06-12-17	ADDENDUM 1	



- NOTES:**
- ALL ELEVATIONS ARE BASED ON A RELATIVE ELEVATION OF 100'-0" EQUAL TO THE INDICATED DATUM ELEVATION. VERIFY DATUM ELEVATION WITH THE LATEST CIVIL DRAWINGS PRIOR TO CONSTRUCTION.
  - TOP OF PIER/FOOTING ELEVATIONS SHALL BE COORDINATED WITH THE LATEST CIVIL DRAWINGS PRIOR TO CONSTRUCTION.
  - COORDINATE BUILDING DIMENSIONS & WALL OPENINGS WITH ARCHITECTURAL DRAWINGS.
  - UNLESS NOTED OTHERWISE, PANELS SHALL BE 6" THICK.

**FOOTING SCHEDULE**

MARK	LENGTH	WIDTH	THICKNESS	REINF (TRANS)	REINF (LONG)	REINF LOCATION	NOTES
F1	9'-0"	17'-0"	2'-0"	(22) #6	(18) #6	TOP & BOT	1,2
F2	10'-0"	10'-0"	1'-6"	(9) #6	(9) #6	TOP & BOT	1,2
F3	5'-0"	8'-0"	1'-6"	(8) #6	(8) #6	TOP & BOT	1,2
F4	7'-0"	7'-0"	1'-0"	(7) #5	(7) #5	BOT	1,2
F5	5'-0"	5'-0"	1'-0"	(5) #5	(5) #5	BOT	1,2
F6	11'-6"	11'-6"	1'-8"	(12) #6	(12) #6	TOP & BOT	1,2



**1 Foundation Plan**  
1/16" = 1'-0"  
NORTH

CINERGY AMARILLO

FOUNDATION PLAN