



ARCHITECT
5G Studio Collaborative, LLC.
800 Jackson St., Suite 500
Dallas, TX 75202
Ian Means 214-646-1508

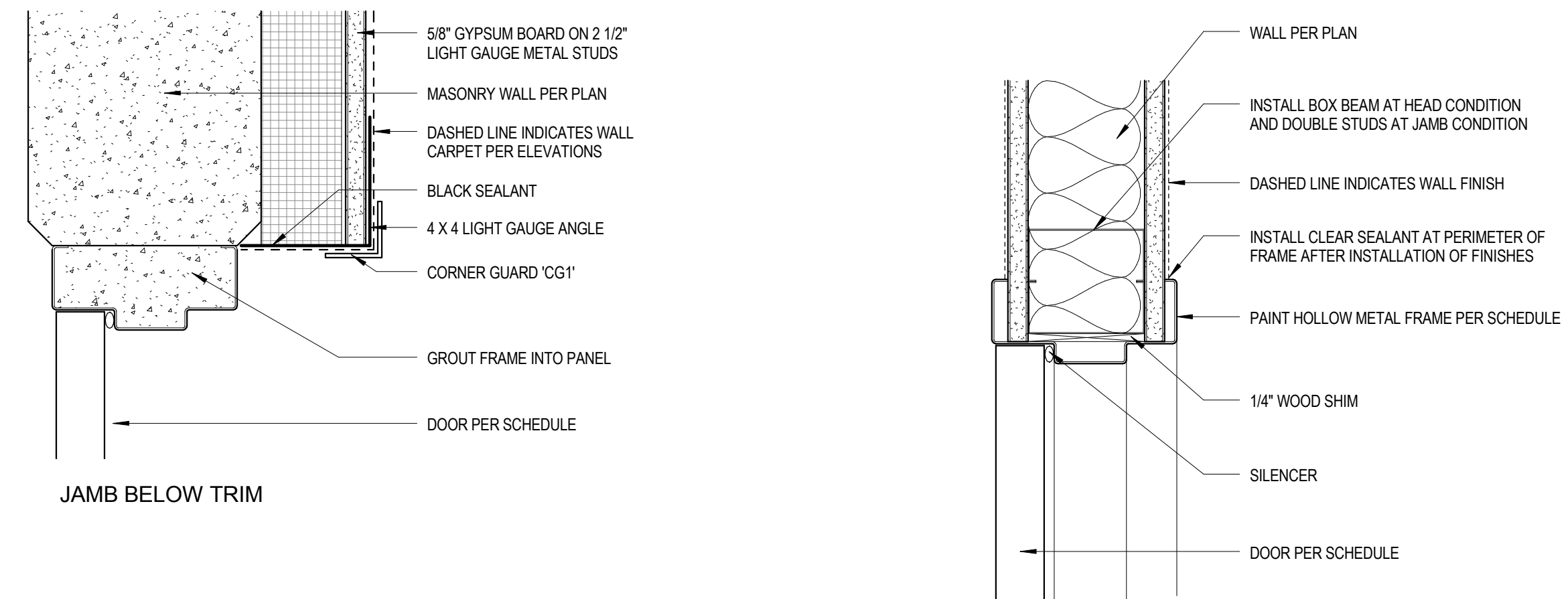
STRUCTURAL ENGINEER
Hunt & Joiner, Inc.
1120 Capitol of Texas Highway Suite 100
Austin, TX 78746
Colin Edwards 512-358-8788

MEP ENGINEER
Envirowest
900 Ranch Road 620 South, Suite C101-301
Austin, TX 78734
Starr Patton 512-693-9015

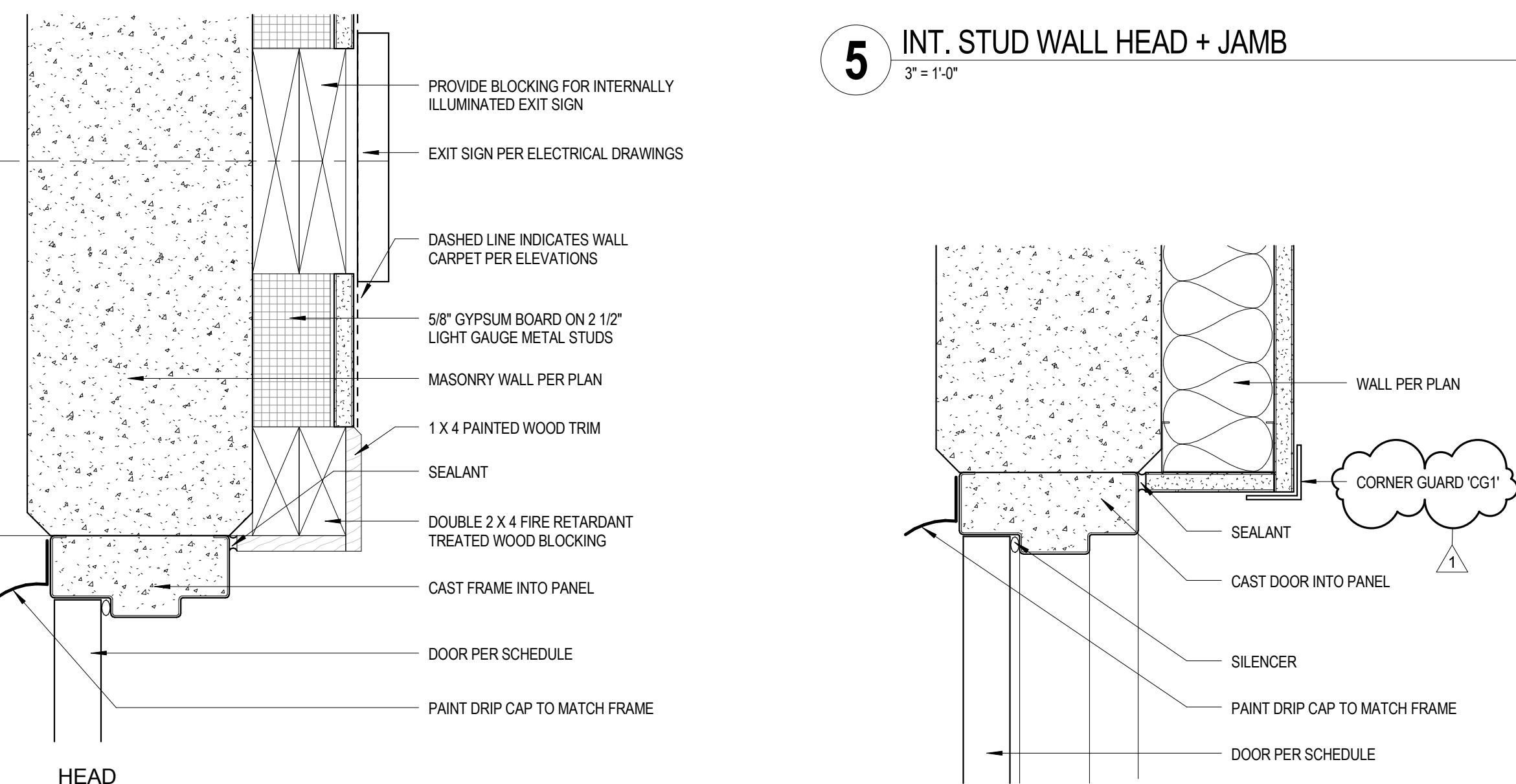
CIVIL ENGINEER
Maverick Engineering
1909 West Wall Street, Suite K
Midland, TX 79701
Andrew Walker 432-262-0999

OWNER
Cinergy Cinemas & Entertainment
5720 LBJ Freeway, Suite 625
Dallas, TX 75240
Jeffrey Benson 469-804-7475

NUMBER	TYPE	DOOR					FRAME					HDWR	REMARKS
		PANEL 1 WIDTH	PANEL 2 WIDTH	HEIGHT	MAT	FIN	MAT	FIN	HEAD	JAMB	SILL		
100A	2A	3'-0"	3'-0"	8'-0"	AL	DBZ	AL	DBZ	4/A40.00	4/A40.00	3B/A40.00	01	VESTIBULE EXTERIOR
100B	2A	3'-0"	3'-0"	8'-0"	AL	DBZ	AL	DBZ	4/A40.00	4/A40.00	3B/A40.00	01	VESTIBULE EXTERIOR
100C	2A	3'-0"	3'-0"	8'-0"	AL	DBZ	AL	DBZ	4/A40.00	4/A40.00	3B/A40.00	01	VESTIBULE EXTERIOR
100D	2A	3'-0"	3'-0"	8'-0"	AL	DBZ	AL	DBZ	4/A40.00	4/A40.00	3B/A40.00	01B	VESTIBULE EXTERIOR
101A	2A	3'-0"	3'-0"	8'-0"	AL	DBZ	AL	DBZ	6/A40.00	6/A40.00	3C/A40.00	02	VESTIBULE INTERIOR
101B	2A	3'-0"	3'-0"	8'-0"	AL	DBZ	AL	DBZ	6/A40.00	6/A40.00	3C/A40.00	02	VESTIBULE INTERIOR
101C	2A	3'-0"	3'-0"	8'-0"	AL	DBZ	AL	DBZ	6/A40.00	6/A40.00	3C/A40.00	02	VESTIBULE INTERIOR
101D	2A	3'-0"	3'-0"	8'-0"	AL	DBZ	AL	DBZ	6/A40.00	6/A40.00	3C/A40.00	02	VESTIBULE INTERIOR
102	A	3'-0"	3'-0"	7'-10"	AL	DBZ	AL	DBZ	6/A40.00	6/A40.00	3C/A40.00	07	SALES
103	A	3'-0"	3'-0"	7'-0"	AL	DBZ	AL	DBZ	6/A40.00	6/A40.00	3C/A40.00	07B	SALES
104	A	3'-0"	3'-0"	7'-0"	AL	DBZ	AL	DBZ	6/A40.00	6/A40.00	3C/A40.00	07B	SALES
105A	A	3'-0"	3'-0"	8'-0"	AL	DBZ	AL	DBZ	4/A40.00	4/A40.00	3B/A40.00	01	MAIN BAR PATIO
105B	A	3'-0"	3'-0"	8'-0"	AL	DBZ	AL	DBZ	4/A40.00	4/A40.00	3B/A40.00	01	MAIN BAR PATIO
107	C	4'-0"	3'-0"	7'-0"	WD	L1	HM	P1	5/A40.00	5/A40.00	3C/A40.00	05B	MAIN BAR SCULLERY
108	2C	3'-0"	3'-0"	7'-0"	HM	P1	HM	P1	4/A40.00	4/A40.00	3A/A40.00	04B	PROMENADE
109	2C	3'-0"	3'-0"	7'-0"	HM	P1	HM	P1	4/A40.00	4/A40.00	3A/A40.00	04B	PROMENADE
110	C	3'-0"	3'-0"	7'-0"	WD	L1	HM	P1	5/A40.00	5/A40.00	3C/A40.00	05	EPIC STORAGE
111	2B	3'-0"	3'-0"	7'-0"	WD	L1	HM	P1	5/A40.00	5/A40.00	3C/A40.00	06	AUD. 01 ENTRY
113	C	3'-0"	3'-0"	7'-0"	HM	P1	HM	P1	7/A40.00	7/A40.00	3A/A40.00	04	AUD. 01 EXIT
115	B	3'-0"	3'-0"	7'-0"	WD	L1	HM	P1	5/A40.00	5/A40.00	3C/A40.00	08	AUD. 02 ENTRY
116	C	3'-0"	3'-0"	7'-0"	HM	P1	HM	P1	7/A40.00	7/A40.00	3A/A40.00	04	AUD. 02 EXIT
118	C	4'-0"	3'-0"	7'-0"	WD	L1	HM	P1	5/A40.00	5/A40.00	3C/A40.00	05	PROMENADE JANITOR
119	C	3'-0"	3'-0"	7'-0"	WD	L1	HM	P1	5/A40.00	5/A40.00	3C/A40.00	05	TECH STOR.
120	C	4'-0"	3'-0"	7'-0"	WD	L1	HM	P1	5/A40.00	5/A40.00	3C/A40.00	05B	KITCHEN STOR.
121	C	4'-0"	3'-0"	7'-0"	WD	L1	HM	P1	5/A40.00	5/A40.00	3C/A40.00	05B	REDEMPTION STORAGE 02
123	B	3'-0"	3'-0"	7'-0"	WD	L1	HM	P1	5/A40.00	5/A40.00	3C/A40.00	08	AUD. 03 ENTRY
124	C	3'-0"	3'-0"	7'-0"	HM	P1	HM	P1	7/A40.00	7/A40.00	3A/A40.00	04	AUD. 03 EXIT
126	B	3'-0"	3'-0"	7'-0"	WD	L1	HM	P1	5/A40.00	5/A40.00	3C/A40.00	08	AUD. 04 ENTRY
126	C	3'-0"	3'-0"	7'-0"	HM	P1	HM	P1	7/A40.00	7/A40.00	3A/A40.00	04	AUD. 04 EXIT
127	C	3'-0"	3'-0"	7'-0"	WD	L1	HM	P1	5/A40.00	5/A40.00	3C/A40.00	06	GM OFFICE
128	2D	3'-0"	3'-0"	7'-0"	MFR	L6	HM	P1	5/A40.00	5/A40.00	3C/A40.00	13	KITCHEN TO PROMENADE
129	C	3'-0"	3'-0"	7'-0"	WD	L1	HM	P1	5/A40.00	5/A40.00	3C/A40.00	06	MAIN OFFICE
130	C	3'-0"	3'-0"	7'-0"	WD	L1	HM	P1	5/A40.00	5/A40.00	3C/A40.00	06	AUDIT
133	B	3'-0"	3'-0"	7'-0"	WD	L1	HM	P1	5/A40.00	5/A40.00	3C/A40.00	08	AUD. 05 ENTRY
134	C	3'-0"	3'-0"	7'-0"	HM	P1	HM	P1	7/A40.00	7/A40.00	3A/A40.00	04	AUD. 05 EXIT
135	B	3'-0"	3'-0"	7'-0"	WD	L1	HM	P1	5/A40.00	5/A40.00	3C/A40.00	08	AUD. 06 ENTRY
136	C	3'-0"	3'-0"	7'-0"	HM	P1	HM	P1	7/A40.00	7/A40.00	3A/A40.00	04	AUD. 06 EXIT
137	C	4'-0"	3'-0"	7'-0"	WD	L1	HM	P1	5/A40.00	5/A40.00	3C/A40.00	03B	RECEIVING
139	B	3'-0"	3'-0"	7'-0"	WD	L1	HM	P1	5/A40.00	5/A40.00	3C/A40.00	08	AUD. 07 ENTRY
140	C	3'-0"	3'-0"	7'-0"	HM	P1	HM	P1	7/A40.00	7/A40.00	3A/A40.00	04	AUD. 07 EXIT
141	B	3'-0"	3'-0"	7'-0"	WD	L1	HM	P1	5/A40.00	5/A40.00	3C/A40.00	08	AUD. 08 ENTRY
144	B	3'-0"	3'-0"	7'-0"	WD	L1	HM	P1	5/A40.00	5/A40.00	3C/A40.00	08	AUD. 09 ENTRY
146	B	3'-0"	3'-0"	7'-0"	WD	L1	HM	P1	5/A40.00	5/A40.00	3C/A40.00	08	AUD. 10 ENTRY
148A	D	4'-0"	3'-0"	7'-0"	MFR	L6	HM	P1	5/A40.00	5/A40.00	3C/A40.00	13	KITCHEN CORRIDOR
148B	C	4'-0"	3'-0"	7'-0"	HM	P1	HM	P1	4/A40.00	4/A40.00	3A/A40.00	03B	CORRIDOR OFF KITCHEN
150A	2D	3'-0"	3'-0"	7'-0"	MFR	L6	HM	P1	5/A40.00	5/A40.00	3C/A40.00	13	KITCHEN AT EVENTS
150B	D	3'-0"	3'-0"	7'-0"	MFR	L6	HM	P1	5/A40.00	5/A40.00	3C/A40.00	13	KITCHEN AT DRCP OFF
157B	C	3'-0"	3'-0"	7'-0"	WD	L1	HM	P1	5/A40.00	5/A40.00	3C/A40.00	06	CONTROL
157C	C	3'-0"	3'-0"	7'-0"	WD	L1	HM	P1	5/A40.00	5/A40.00	3C/A40.00	14	ESCAPE
157F	C	3'-0"	3'-0"	7'-0"	WD	L1	HM	P1	5/A40.00	5/A40.00	3C/A40.00	14	ESCAPE
157H	C	3'-0"	3'-0"	7'-0"	WD	L1	HM	P1	5/A40.00	5/A40.00	3C/A40.00	14	ESCAPE
158	2D	3'-0"	3'-0"	7'-0"	MFR	L6	HM	P1	5/A40.00	5/A40.00	3C/A40.00	13	KITCHEN AT MAIN BAR
159	C	3'-0"	3'-0"	7'-0"	WD	L1	HM	P1	5/A40.00	5/A40.00	3C/A40.00	10	UNISEX
160	C	3'-0"	3'-0"	7'-0"	WD	L1	HM	P1	5/A40.00	5/A40.00	3C/A40.00	10	UNISEX
162	D	3'-0"	3'-0"	7'-0"	MFR	L6	HM	P1	5/A40.00	5/A40.00	3C/A40.00	13	CONCESSION SCULLERY
164	B	3'-0"	3'-0"	7'-0"	WD	L1	HM	P1	5/A40.00	5/A40.00	3C/A40.00	08B	CANOPY STOR.
164	A	3'-0"	3'-0"	7'-0"	AL	DBZ	AL	DBZ	6/A40.00	6/A40.00	3C/A40.00	05	TECH ROOM
165B	E	3'-0"	3'-0"	7'-0"	AL	DBZ	AL	DBZ	8/A40.00	8/A40.00	8/A40.00	-	EVENT
166A	A	3'-0"	3'-0"	7'-0"	AL	DBZ	AL	DBZ	6/A40.00	6/A40.00	3C/A40.00	09	EVENT
166B	E	3'-0"	3'-0"	7'-0"	AL	DBZ	AL	DBZ	8/A40.00	8/A40.00	8/A40.00	-	EVENT
167	A	3'-0"	3'-0"	7'-0"	AL	DBZ	AL	DBZ	6/A40.00	6/A40.00	3C/A40.00	09	EVENT
168	2C	3'-0"	3'-0"	7'-0"	WD	L1	HM	P1	5/A40.00	5/A40.00	3C/A40.00	05	LANE
169	A	3'-0"	3'-0"	7'-0"	AL	DBZ	AL	DBZ	6/A40.00	6/A40.00	3C/A40.00	11	VESTING
170A	C	3'-0"	3'-0"	7'-0"	WD	L1	HM	P1	5/A40.00	5/A40.00	3C/A40.00	05	LASER TAG
170B	C	3'-0"	3'-0"	7'-0"	WD	L1	HM	P1	5/A40.00	5/A40.00	3C/A40.00	11	LASER TAG
170C	C	3'-0"	3'-0"	7'-0"	HM	P1	HM	P1	4/A40.00	4/A40.00	3A/A40.00	12	LASER TAG EXTERIOR
171A	C	3'-0"	3'-0"	7'-0"	WD	L1	HM	P1	5/A40.00	5/A40.00	3C/A40.00	05	SERVICE
171B	C	4'-0"	3'-0"	7'-0"	HM	P1	HM	P1	4/A40.00	4/A40.00	3A/A40.00	03	SERVICE EXTERIOR
172	2C	4'-0"	4'-0"	7'-0"	HM	P1	HM	P1	4/A40.00	4/A40.00	3A/A40.00	12	BOWLING CONCOURSE TO EXT.
173	C	3'-0"	3'-0"	7'-0"	WD	L1	HM	P1	5/A40.00	5/A40.00	3C/A40.00	05	BOWLING BAR
174	C	3'-0"	3'-0"	7'-0"	WD	L1	HM	P1	5/A40.00	5/A40.00	3C/A40.00	05	BOWLING STOR.
175	C	3'-0"	3'-0"	7'-0"	WD	L1	HM	P1	5/A40.00	5/A40.00	3C/A40.00	05	BOWLING BAR SCULLERY
179	C	4'-0"	3'-0"	7'-0"	WD	L1	HM	P1	5/A40.00	5/A40.00	3C/A40.00	05	LIFT
182	C	3'-0"	3'-0"	7'-0"	WD	L1	HM	P1	5/A40.00	5/A40.00	3C/A40.00	05	GAME ROOM JANITOR
184	C	4'-0"	3'-0"	7'-0"	HM	P1	HM	P1	4/A40.00	4/A40.00	3A/A40.00	03	SPRINKLER
186	C	3'-0"	3'-0"	7'-0"	WD	L1	HM	P1	5/A40.00	5/A40.00	3C/A40.00	05	REDEMPTION STOR.
200A	C	3'-0"	3'-0"	7'-0"	WD	L1	HM	P1	5/A40.00	5/A40.00	3C/A40.00	05	EQUIPMENT
200B	2C	3'-0"	3'-0"	7'-0"	HM	P1	HM	P1	4/A40.00	4/A40.00	3A/A40.00	05	EQUIPMENT

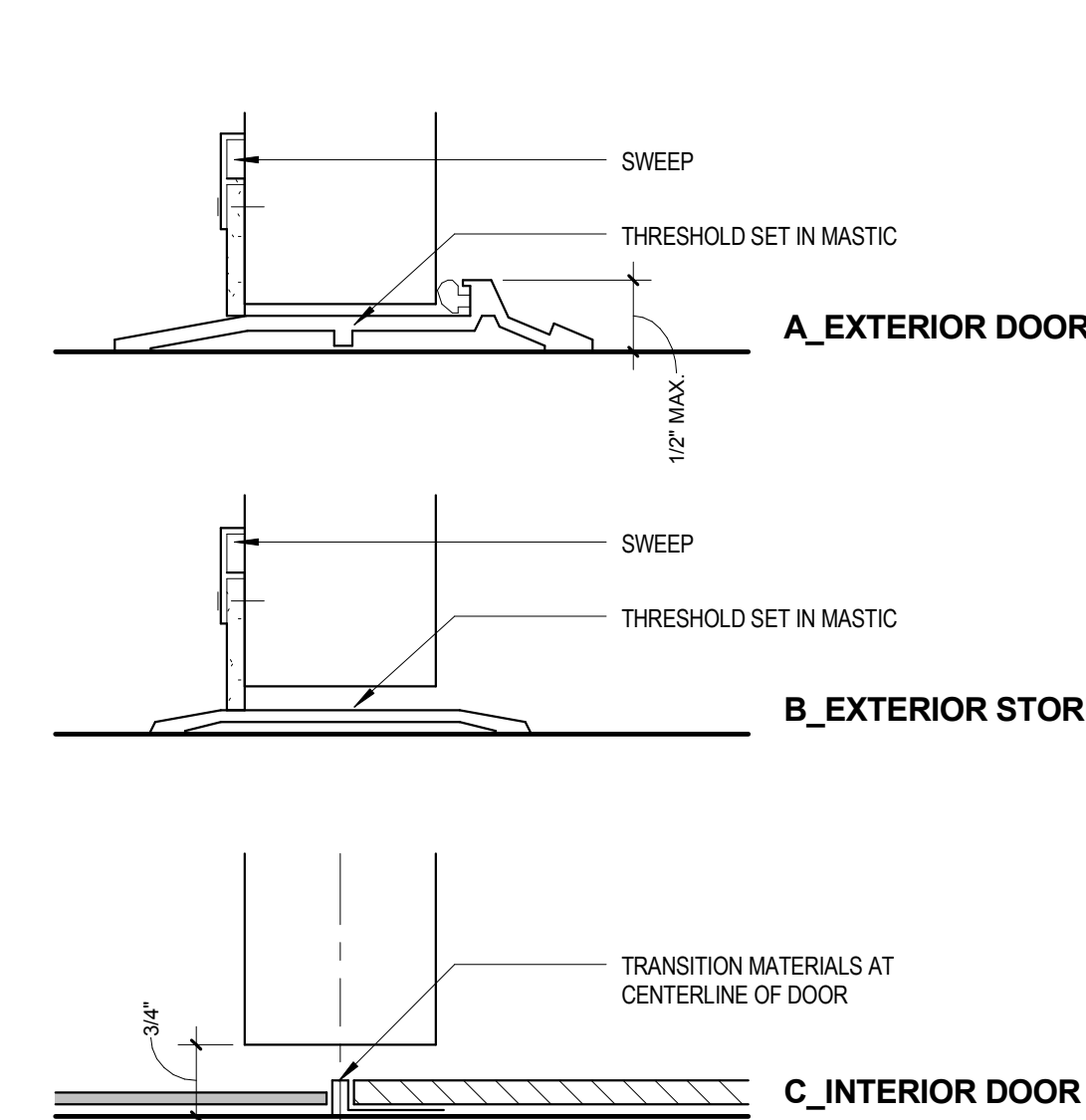


5 INT. STUD WALL HEAD + JAMB
3" = 1'-0"

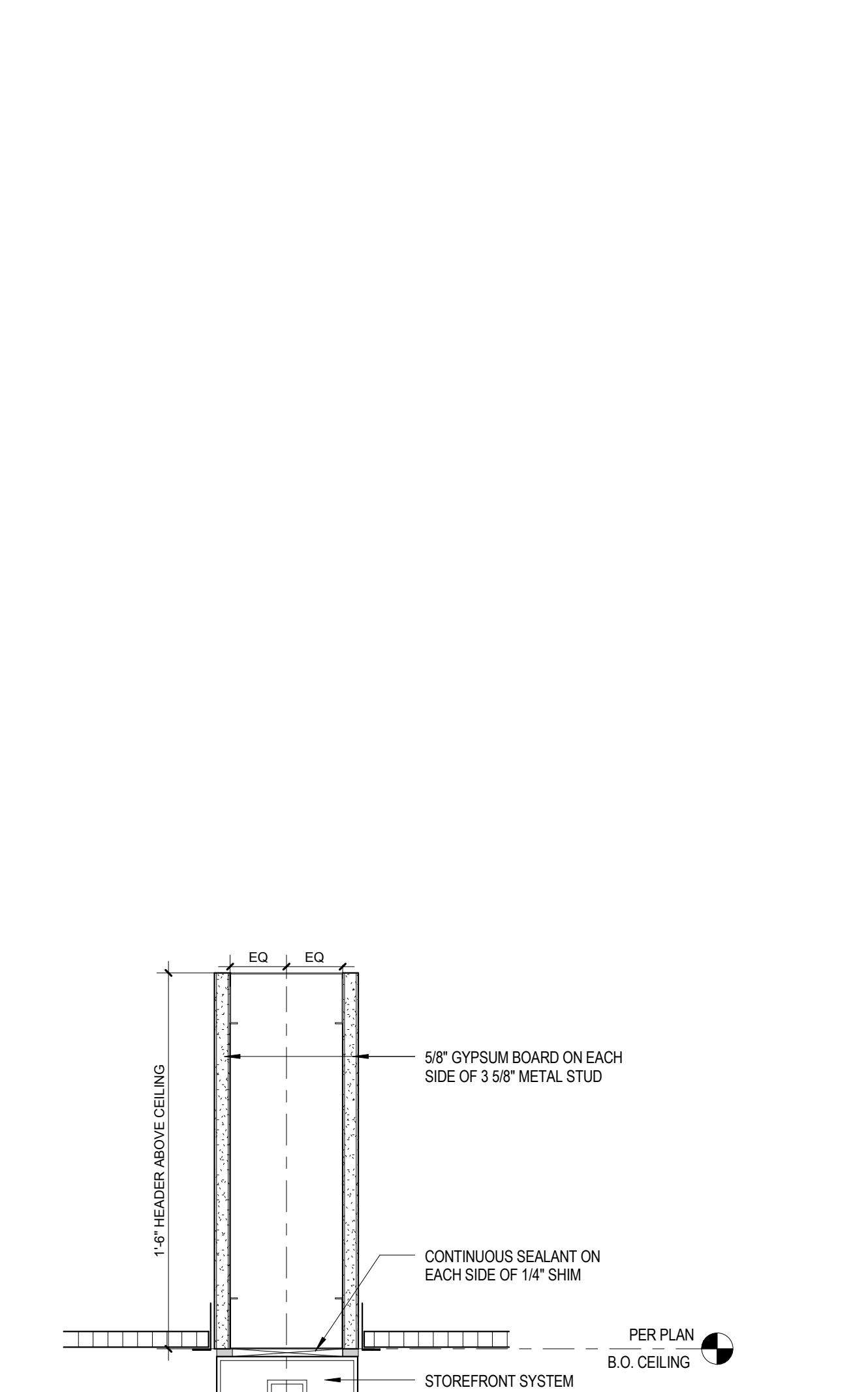


7 EXT. AUD. HEAD+JAMB
3" = 1'-0"

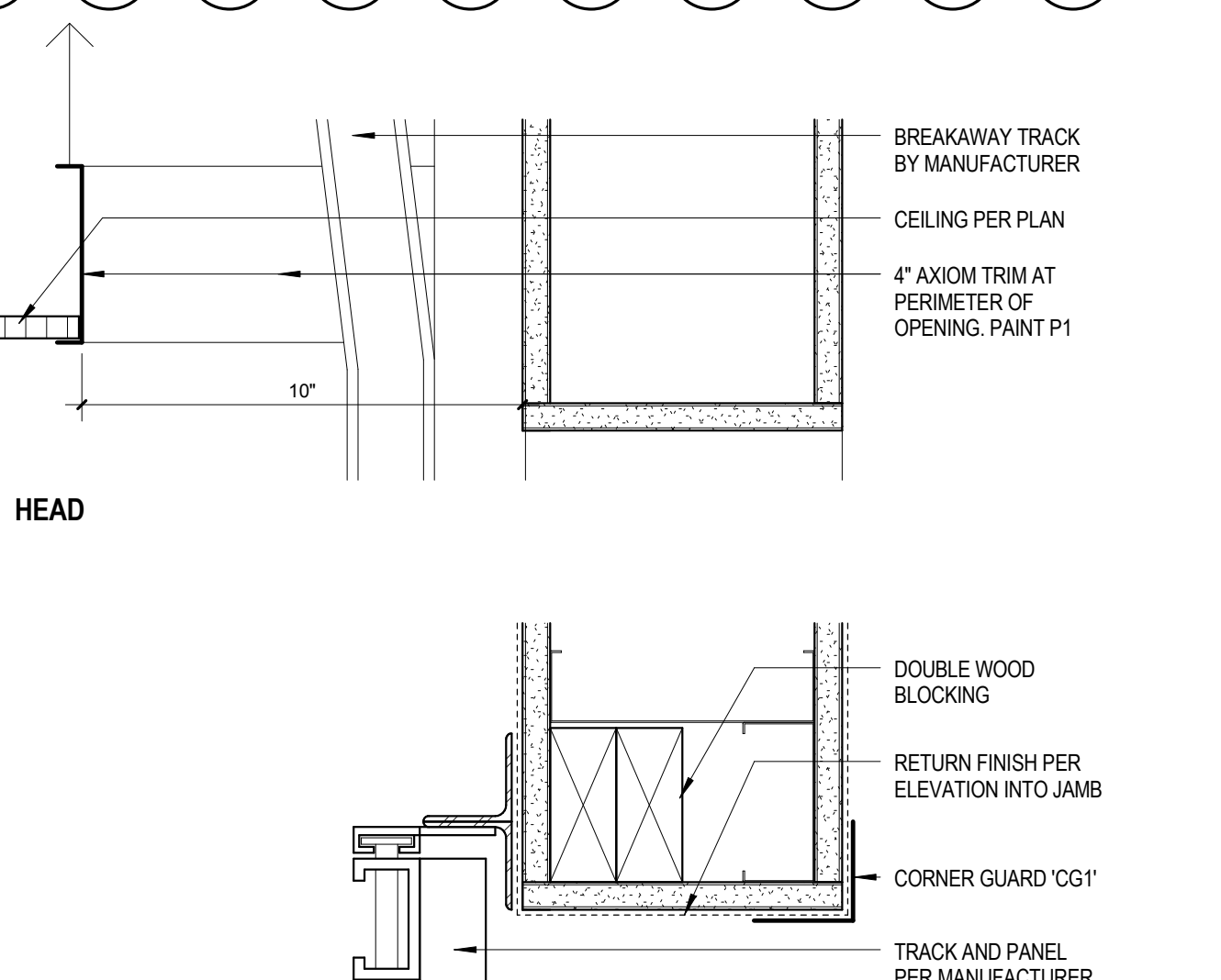
4 EXT. TILT WALL HEAD + JAMB
3" = 1'-0"



3 THRESHOLD TYPES
6" = 1'-0"

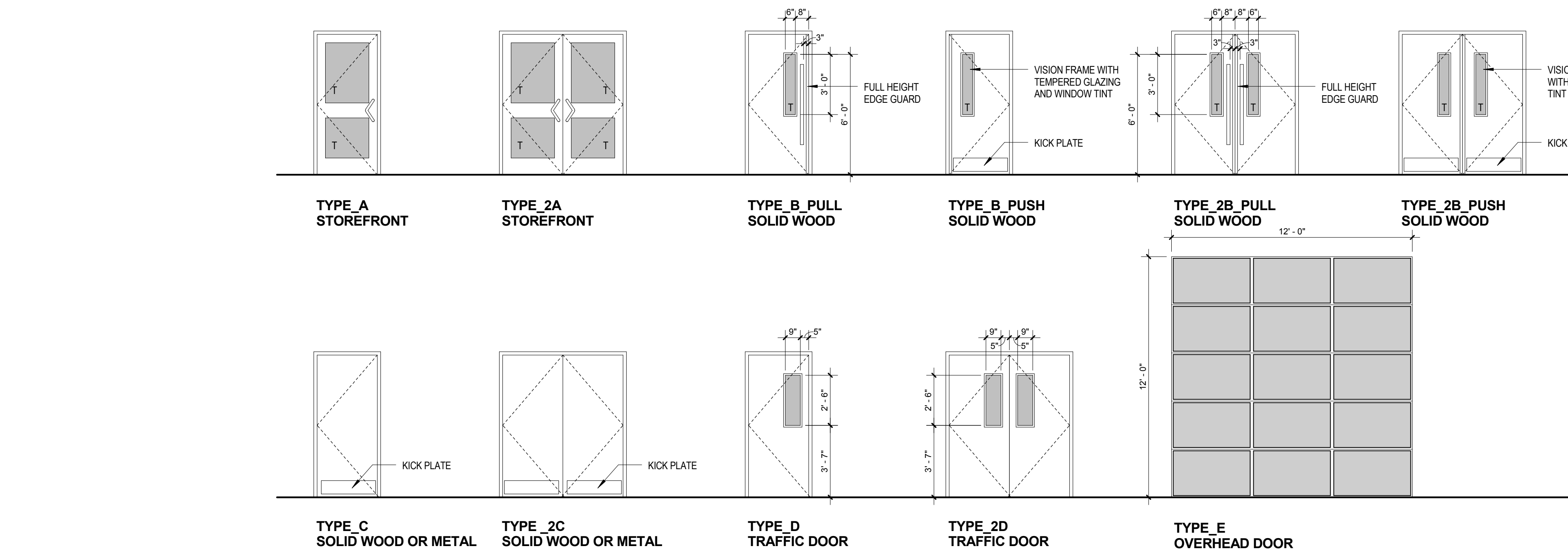


9 SALES OFFICE STOREFRONT HEAD
3" = 1'-0"



8 OVERHEAD DOOR HEAD AND JAMB
3" = 1'-0"

6 INT. STOREFRONT HEAD+JAMB
3" = 1'-0"



2 DOOR TYPES
1/4" = 1'-0"

GENERAL NOTES

- A COORDINATE DOOR OPERATION AND LOCKING HARDWARE WITH KATHI GILMAN PRIOR TO INSTALLATION.
- B FIELD VERIFY ALL OPENING DIMENSIONS AND FLOOR FINISH HEIGHTS BEFORE ORDERING DOORS.
- C PAINT INTERIOR FACE OF HOLLOW METAL AUDITORIUM EXT DOORS AND FRAMES THE COLOR INDICATED ON THE DOOR SCHEDULE.
- D PAINT EXTERIOR FACE OF HOLLOW METAL DOORS AND FRAMES TO MATCH THE ADJACENT WALL COLOR PER EXTERIOR ELEVATIONS.

HARDWARE ABBREVIATIONS

MFR.	PART NO.	FINISH	NOTES
HINGE			
N-SS	BOMMER	BB5006N-504	STAINLESS STEEL 1.5 PAIR AT 3'-0"; 2 PAIR AT 4'-0" DOORS
R-SS	BOMMER	BB5006-504	STAINLESS STEEL 1.5 PAIR AT 3'-0"; 2 PAIR AT 4'-0" DOORS
PV	KAWNEER	OFFSET PIVOT	DARK BRONZE
FUNCTION			
DL	KAWNEER	4510 DEAD LATCH	DARK BRONZE NO LOCK AT SALES OFFICES
KC	KAWNEER	KEYED CYLINDER	DARK BRONZE COORDINATE KEYING WITH OWNER
P1	VON DUPRIN	98 SERIES	DARK BRONZE CD-88-313
P2	VON DUPRIN	98 SERIES	DARK BRONZE 88-NL-06-313
P3	VON DUPRIN	98 SERIES	DARK BRONZE 88-D3-313
P4	VON DUPRIN	98 SERIES	DARK BRONZE 88-DT-313
PA	BEST	9000 SERIES	SATIN NICKEL 9K-3-7-N15NC-STK-619
PP	IVES	8800	SATIN STAINLESS GREENWICH DECORATIVE OFFSET ARC
OI	ASSA ABLOY	E SERIES	NICKEL PLATED OCCUPANCY INDICATOR
RM	VON DUPRIN	9954	DARK BRONZE KEYS, DOUBLE DOORS ONLY
ST	BEST	9000 SERIES	SATIN NICKEL 9K-3-7-D-19NC-STK-619
CLOSER			
ED	LCN	4040XP-3077EDA	BLACK METAL COVER</