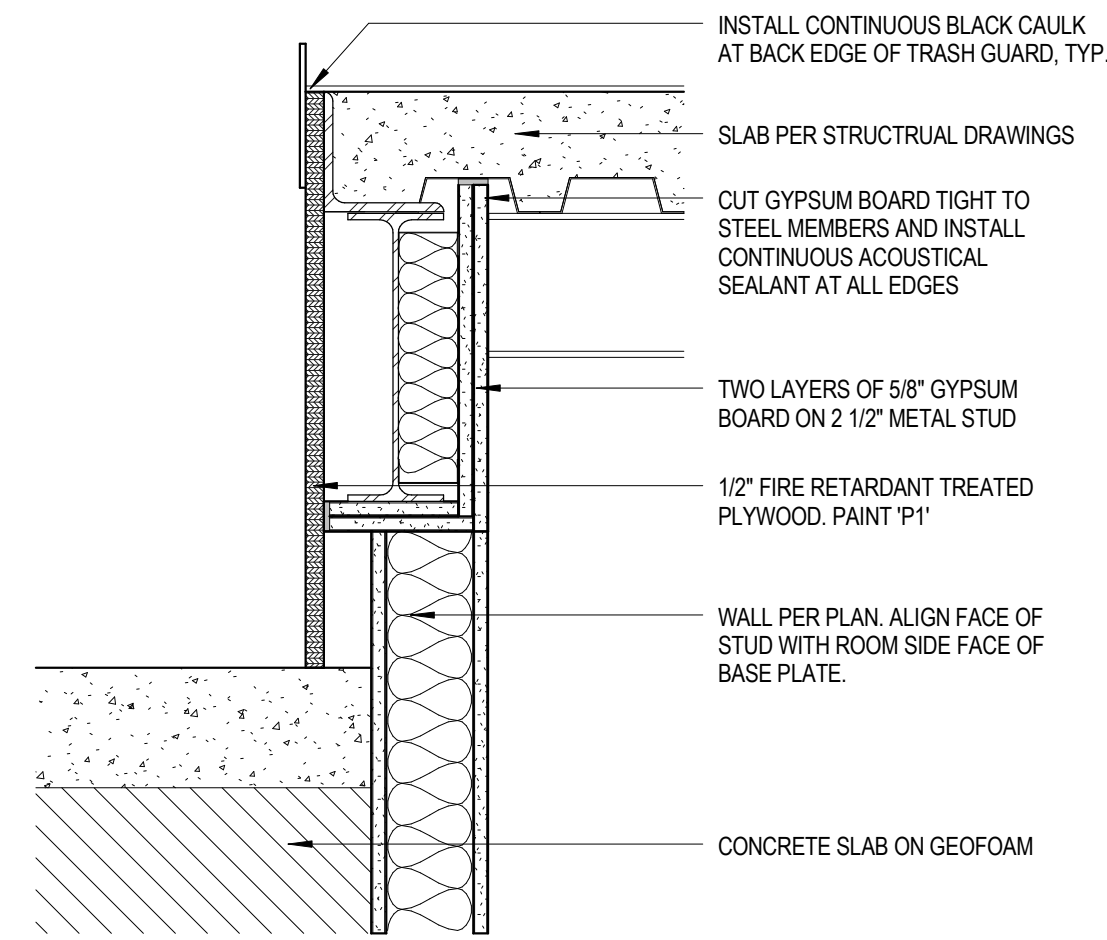
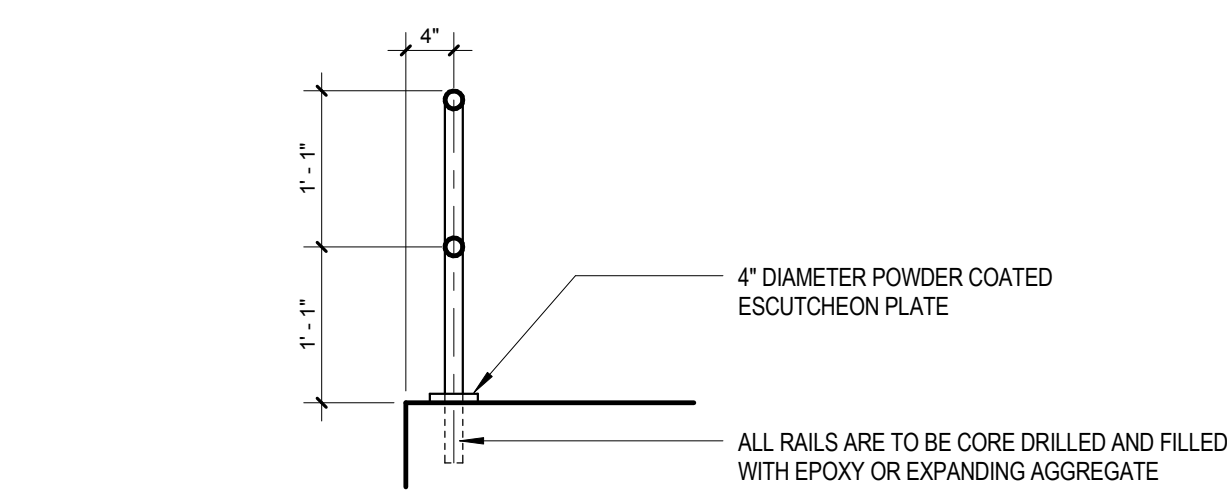


CLOSURE AT NON-BEAM CONDITION

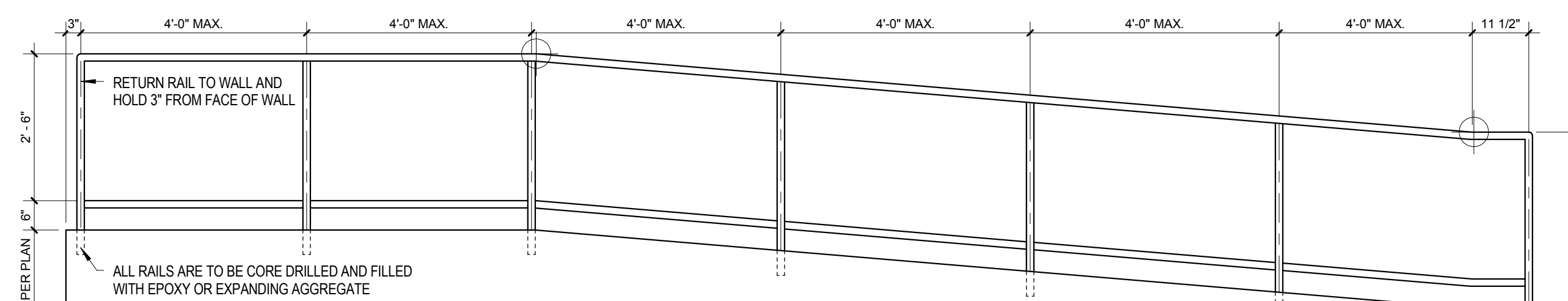
15 RISER CLOSURE
1 1/2" = 1'-0"



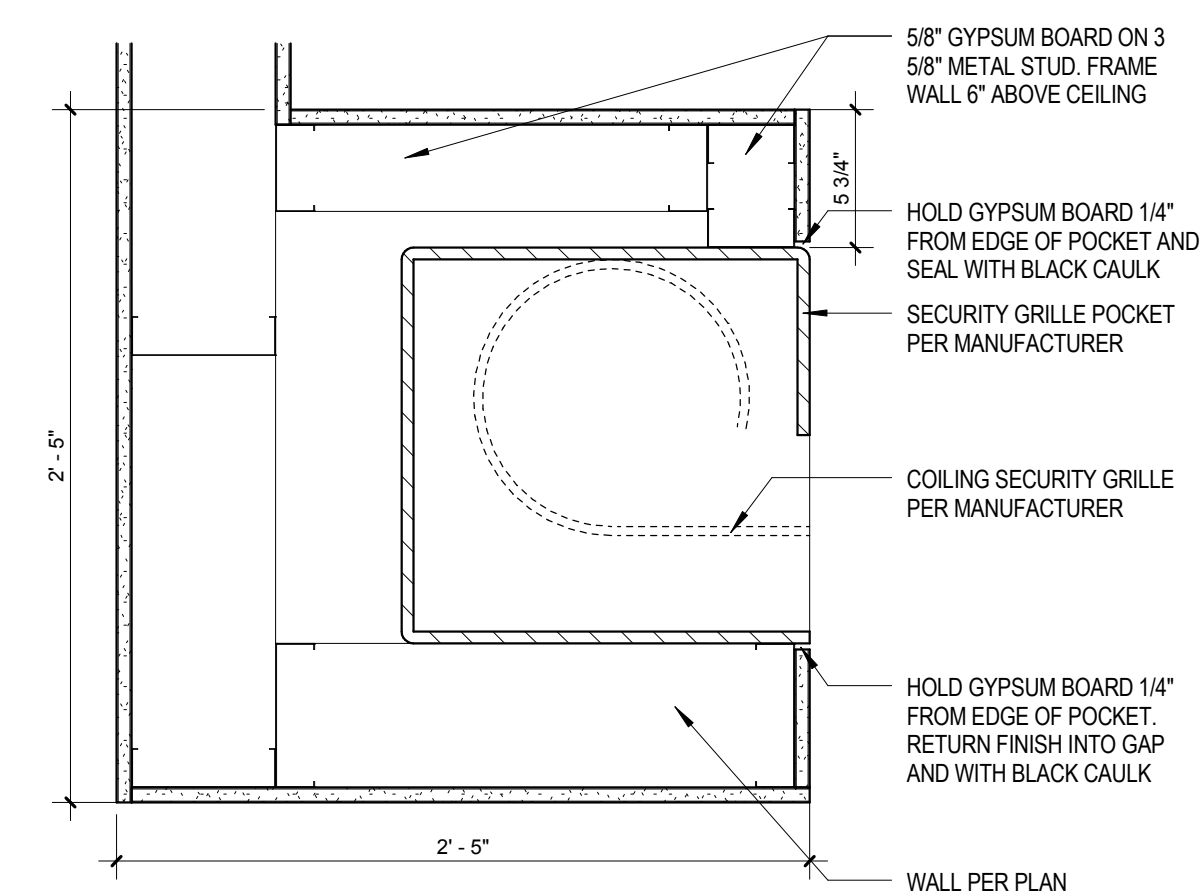
CLOSURE AT BEAM CONDITION



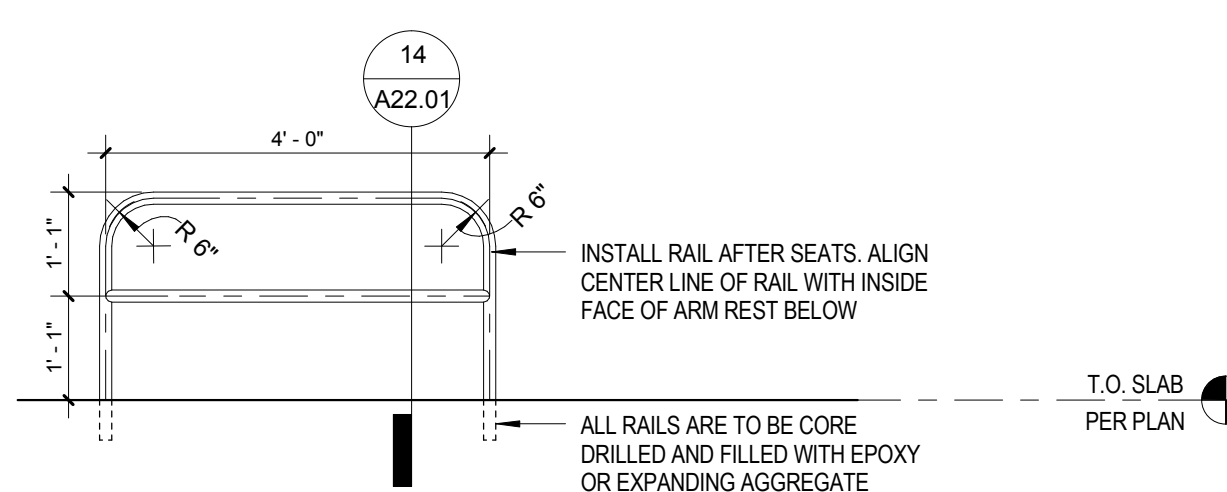
14 CROSS AISLE GUARD SECTION
3/4" = 1'-0"



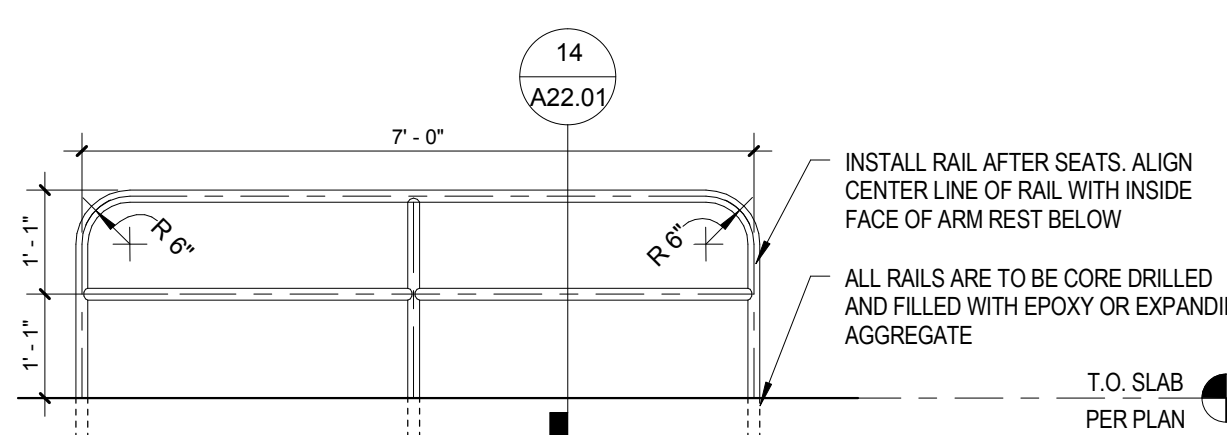
7 EXTERIOR RAMP RAIL
1/2" = 1'-0"



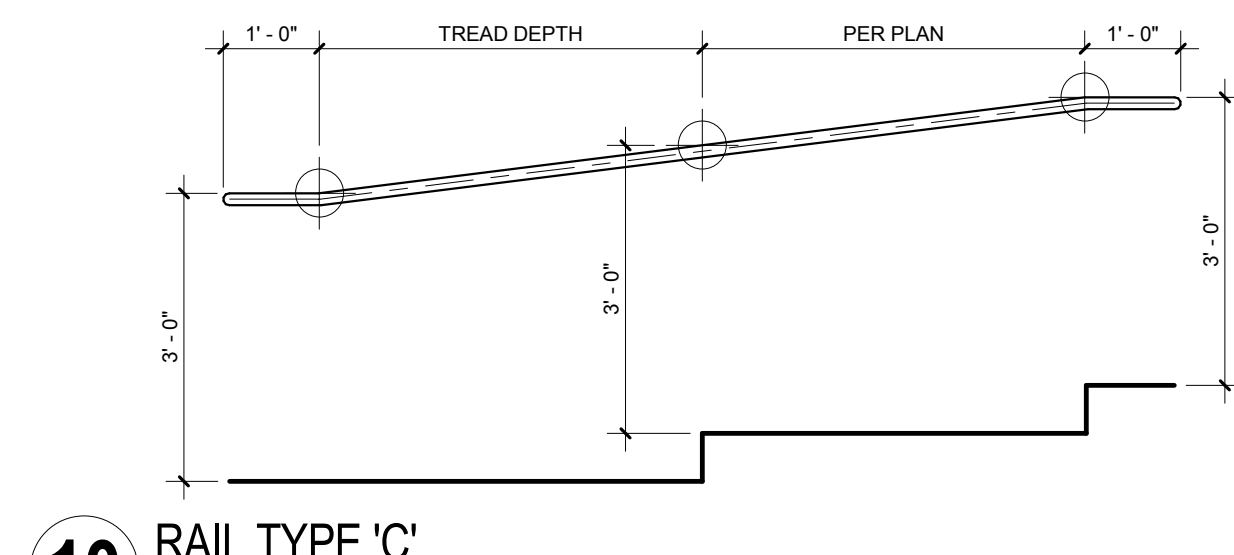
13 SECURITY GRILLE POCKET
1 1/2" = 1'-0"



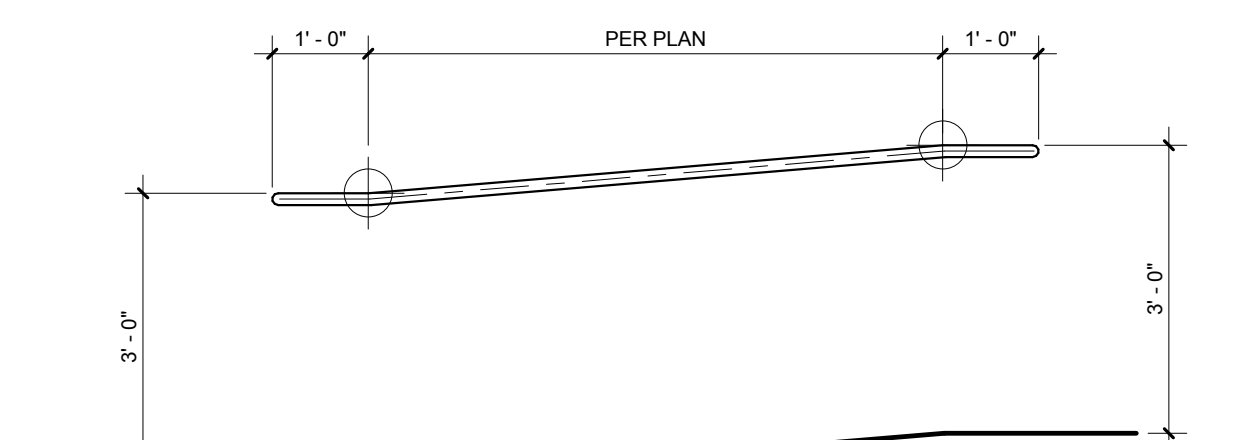
12 RAIL TYPE 'E'
1/2" = 1'-0"



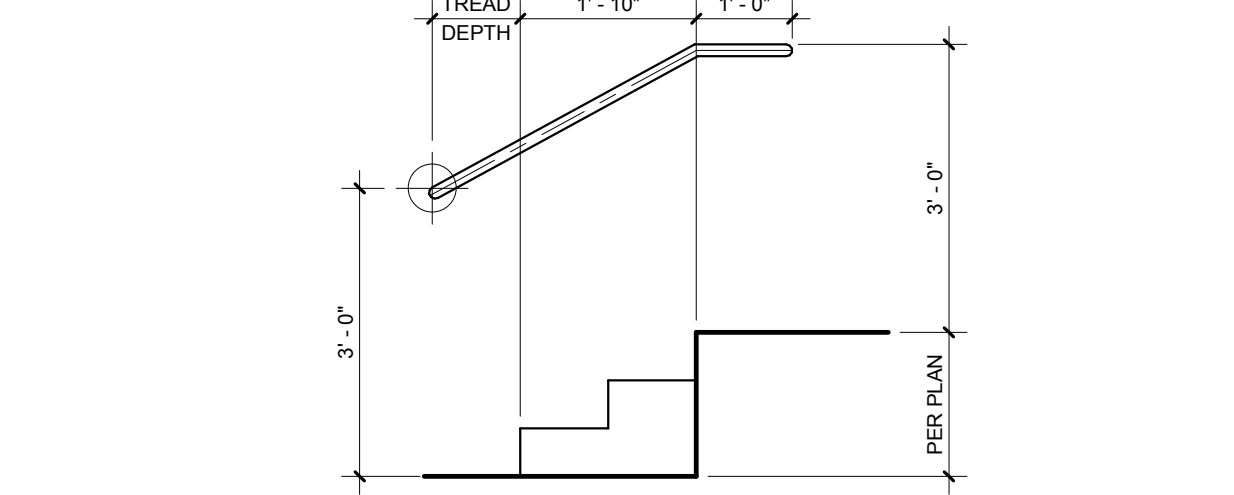
11 RAIL TYPE 'D'
1/2" = 1'-0"



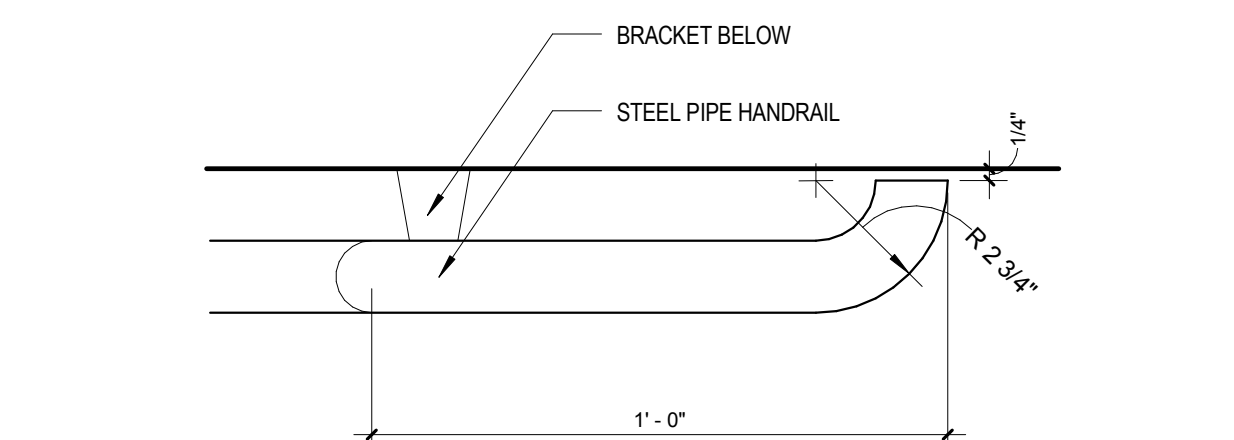
10 RAIL TYPE 'C'
1/2" = 1'-0"



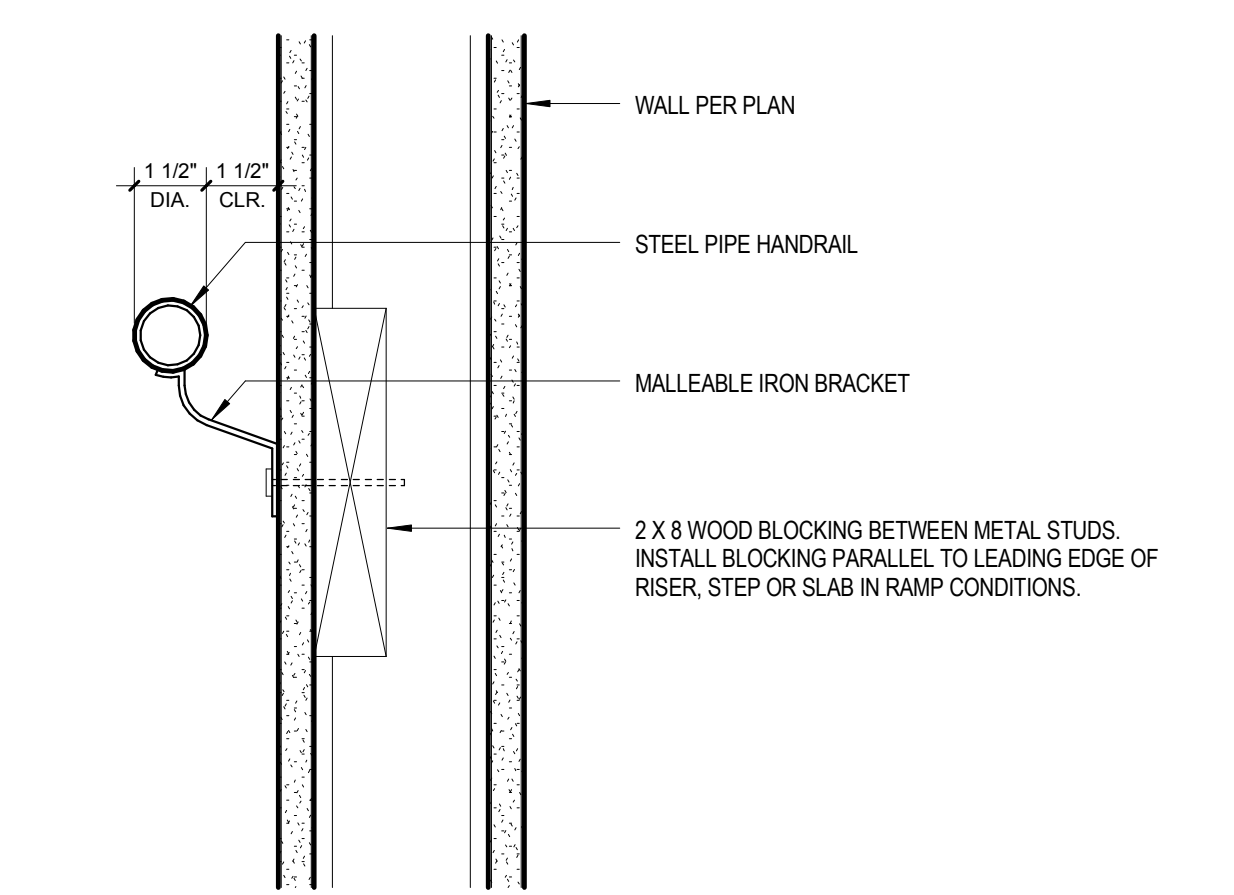
9 RAIL TYPE 'B'
1/2" = 1'-0"



8 RAIL TYPE 'A'
1/2" = 1'-0"



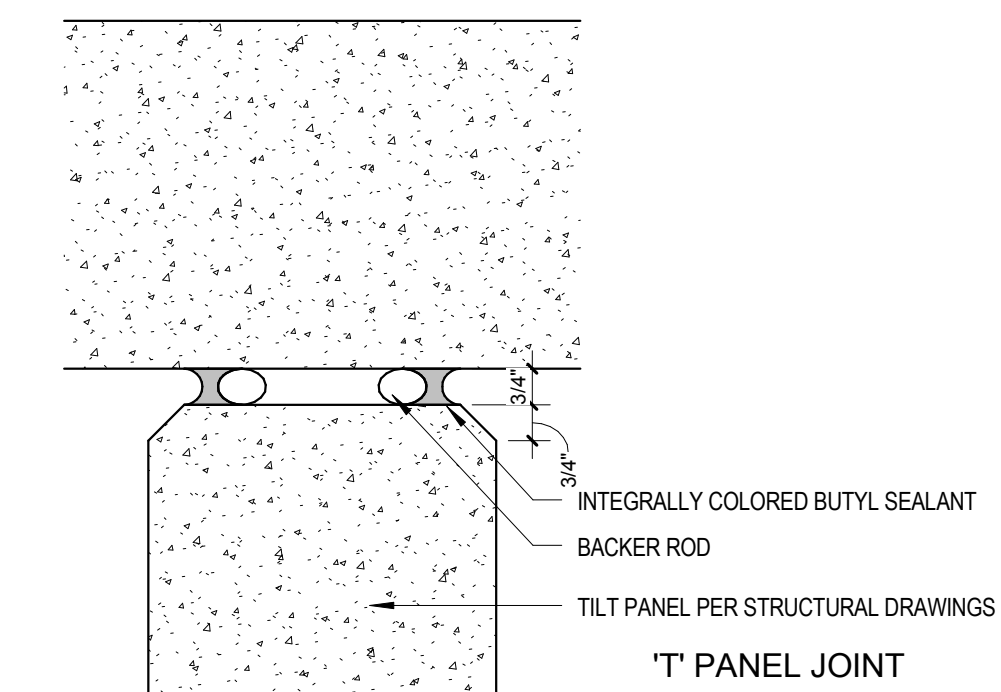
6 TYPICAL HANDRAIL EXTENSION
3" = 1'-0"



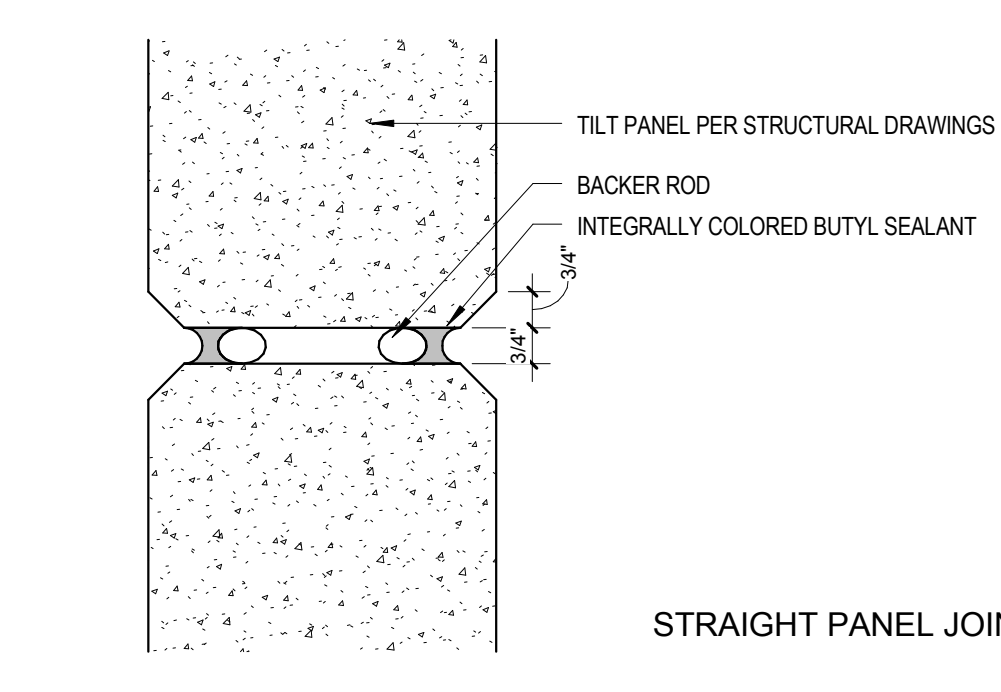
5 TYPICAL HANDRAIL BLOCKING

- A POWDER COAT ALL RAILS IN AUDITORIUM.
- B PAINT ALL RAILS IN STAIRS AND CORRIDORS 'P21'.
- C PAINT ALL RAILS ON EXTERIOR OF BUILDING 'P21'.
- D VERIFY ALL DIMENSIONS IN FIELD PRIOR TO FABRICATION.
- E INSTALL MALLEABLE IRON BRACKETS WITH SCREW FASTENERS AT ALL HANDRAILS.
- F INSTALL BRACKETS EQUALLY ALONG LENGTH OF RAIL. DISTANCE BETWEEN BRACKETS SHALL NOT EXCEED 5'-0" .
- G PROVIDE 1 1/2" CLEARANCE BETWEEN THE OUTER FACE OF ALL HANDRAILS AND THE ADJACENT WALL.
- H PROVIDE BLOCKING FOR HANDRAILS PER 5 / A22.01
- I PROVIDE HANDRAIL EXTENSIONS WHERE SHOWN PER 6 / A22.01

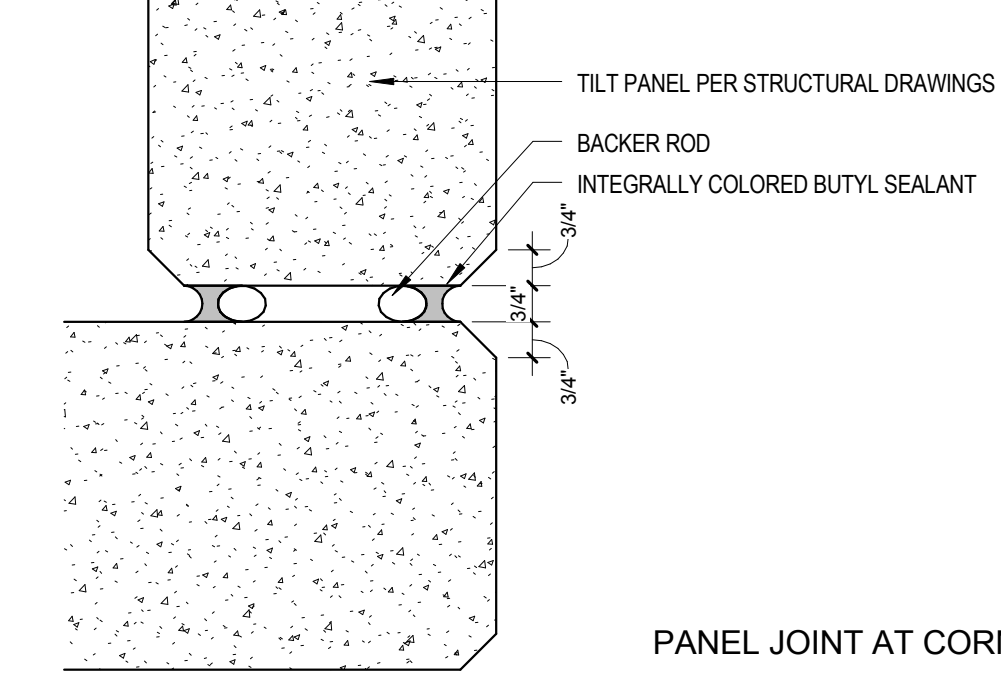
4 RAILING GENERAL NOTES
1/2" = 1'-0"



T PANEL JOINT

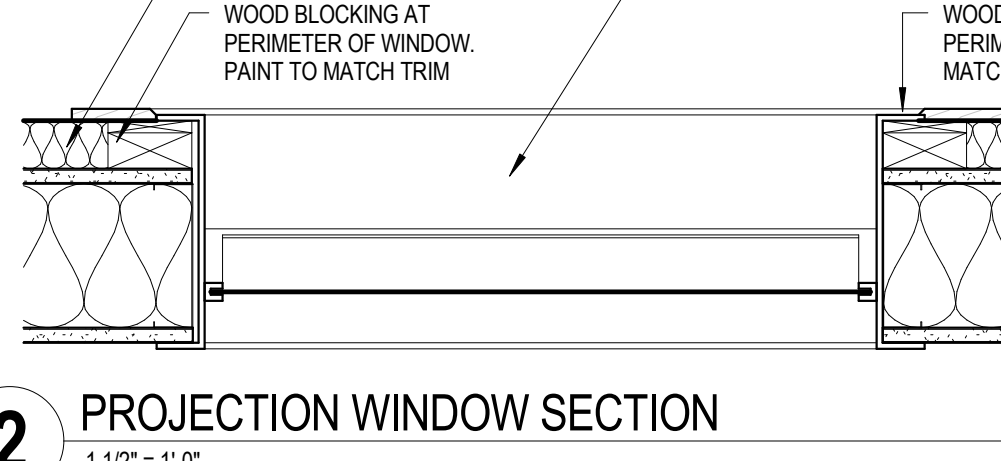


STRAIGHT PANEL JOINT

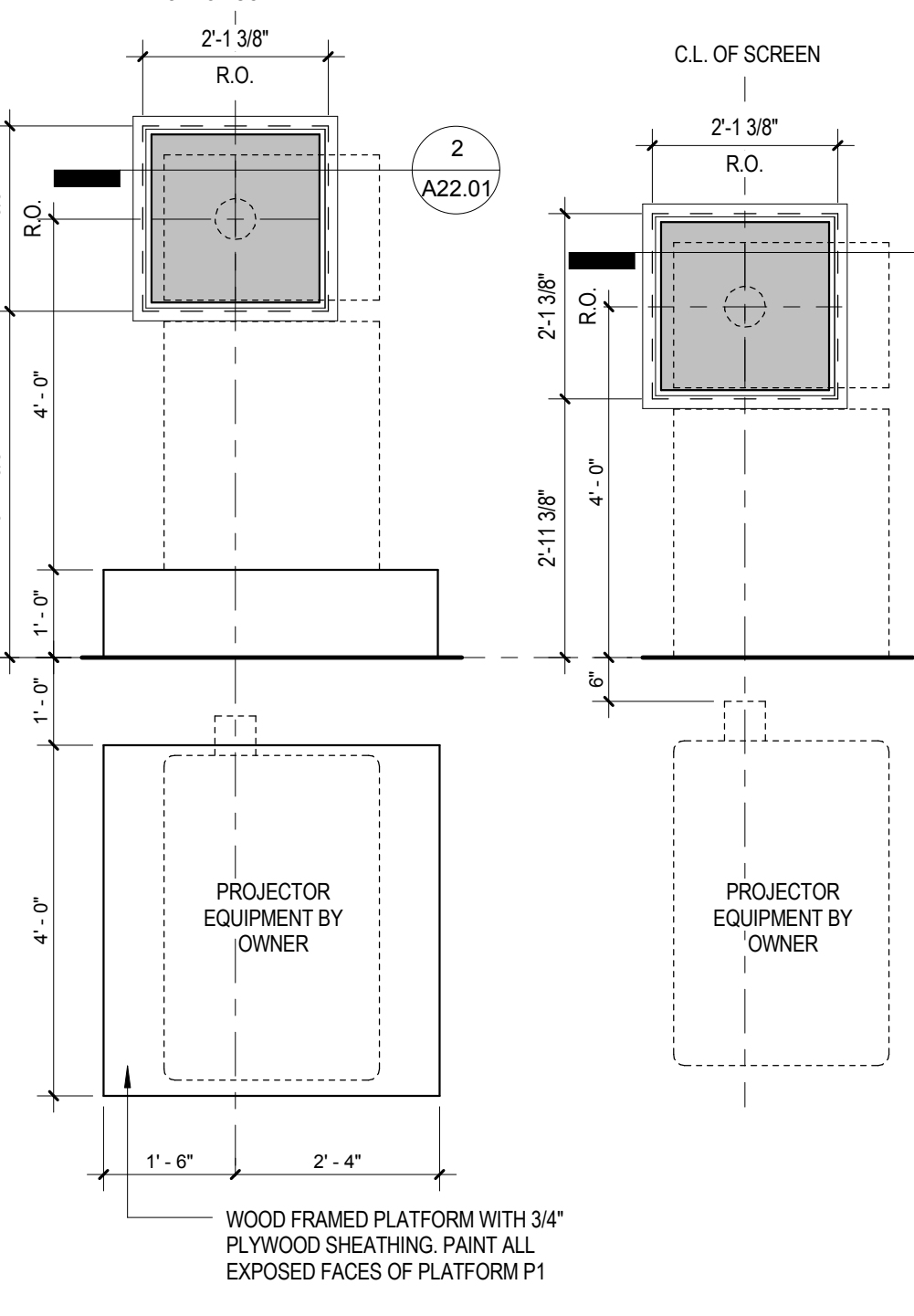


PANEL JOINT AT CORNER

3 TYPICAL PANEL JOINTS
3" = 1'-0"



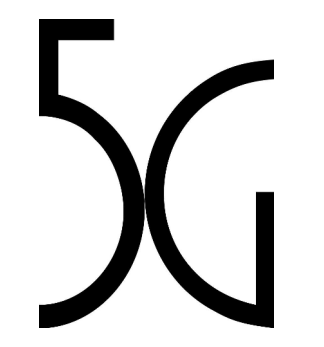
2 PROJECTION WINDOW SECTION
1 1/2" = 1'-0"



AUDITORIUM 01 EPIC **AUDITORIUM 02-10**

CONTRACTOR IS TO CONFIRM SIZE OF THE ROUGH OPENING FOR THE PROJECTION WINDOW BASED ON THE SHOP DRAWING FROM THE OWNER. DO NOT FRAME OPENING WITHOUT APPROVED SHOP DRAWING.

1 PROJECTOR PLANS AND ELEVATIONS
1/2" = 1'-0"



ARCHITECT
5G Studio Collaborative, LLC.
800 Jackson St., Suite 500
Dallas, TX 75202
Ian Meiers 214-646-1508

STRUCTURAL ENGINEER
Hunt & Joiner, Inc.
1120 Capitol of Texas Highway Suite 100
Austin, TX 78746
Colin Edwards 512-358-8788

MEP ENGINEER
Envirodesign
900 Ranch Road 620 South, Suite C101-301
Austin, TX 78734
Sam Fattori 512-693-9015

CIVIL ENGINEER
Maverick Engineering
1909 West Wall Street, Suite K
Midland, TX 79701
Andrew Nelson 432-282-0999

OWNER
Cinergy Cinemas & Entertainment
5720 LBJ Freeway, Suite 625
Dallas, TX 75240
Jeffrey Benson 469-804-7475

REV.	DATE	ISSUE FOR	ISSUE TITLE
	06.12.17	ISSUE FOR PERMIT	
	05.24.17	ISSUE FOR BID	
1	06.12.17	ADDENDUM 01	



CINERGY AMARILLO

PLAN DETAILS

ARA007 PROJECT NUMBER **A22.01** SHEET NUMBER