



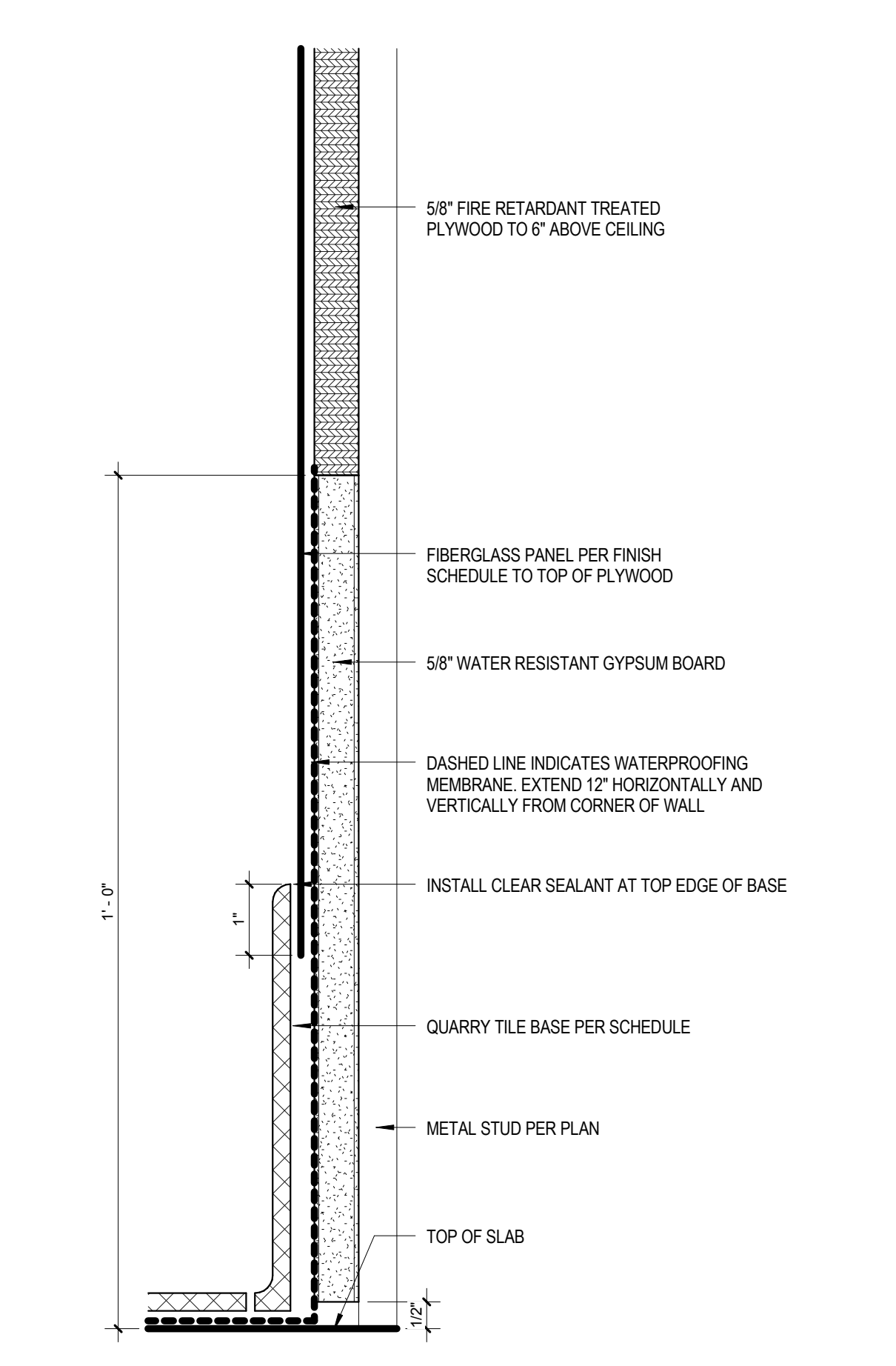
ARCHITECT  
5G Studio Collaborative, LLC.  
800 Jackson St., Suite 500  
Dallas, TX 75202  
Ian Meares 214-646-1508

STRUCTURAL ENGINEER  
Hunt & Joiner, Inc.  
1120 Capitol of Texas Highway Suite 100  
Austin, TX 78746  
Colin Edwards 512-356-8788

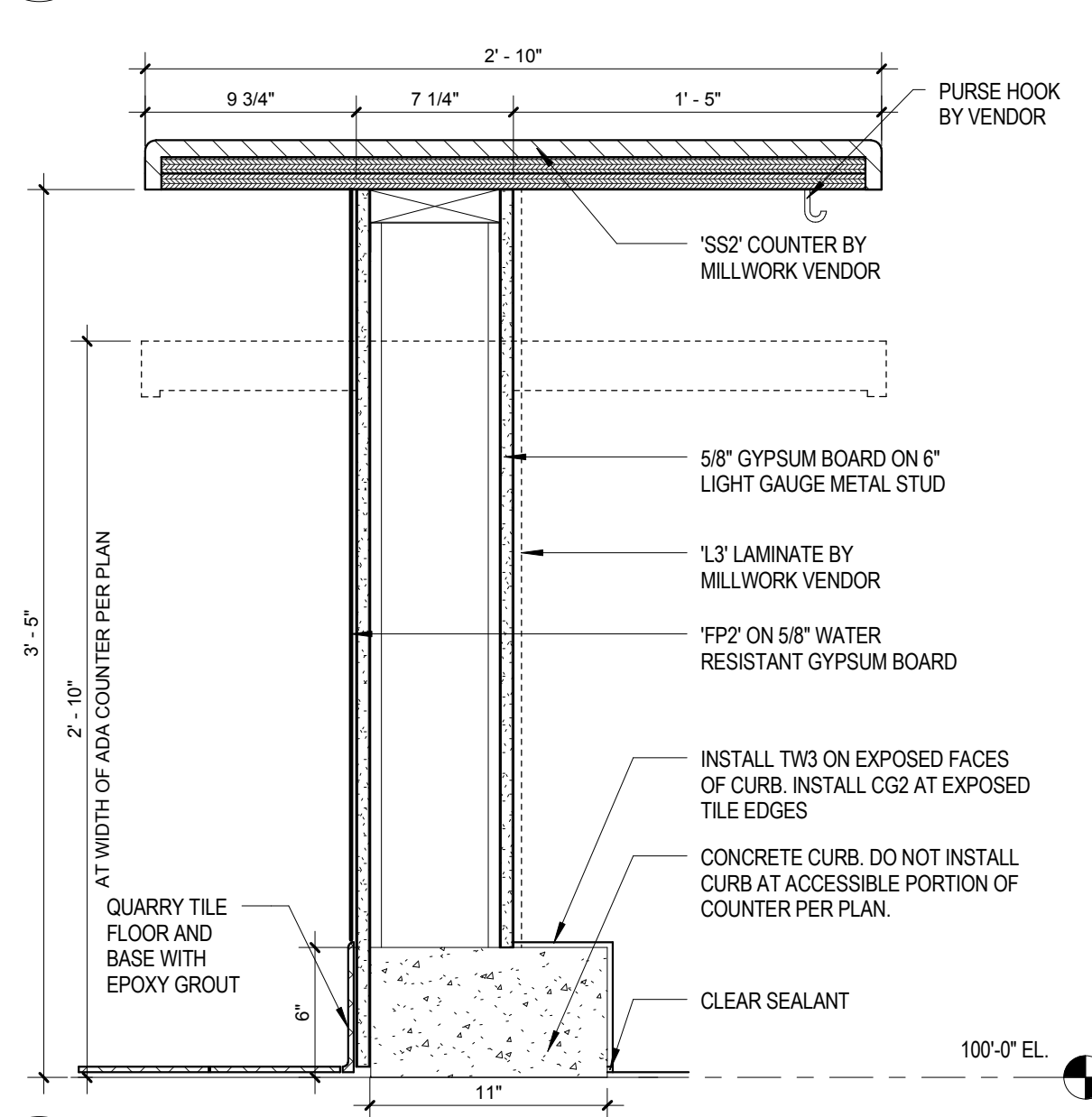
MEP ENGINEER  
Envirodesign  
900 Ranch Road 620 South, Suite C101-301  
Austin, TX 78734  
Sam Patton 512-693-9015

CIVIL ENGINEER  
Maverick Engineering  
1909 West Wall Street, Suite K  
Midland, TX 79701  
Andrew Melton 432-282-0999

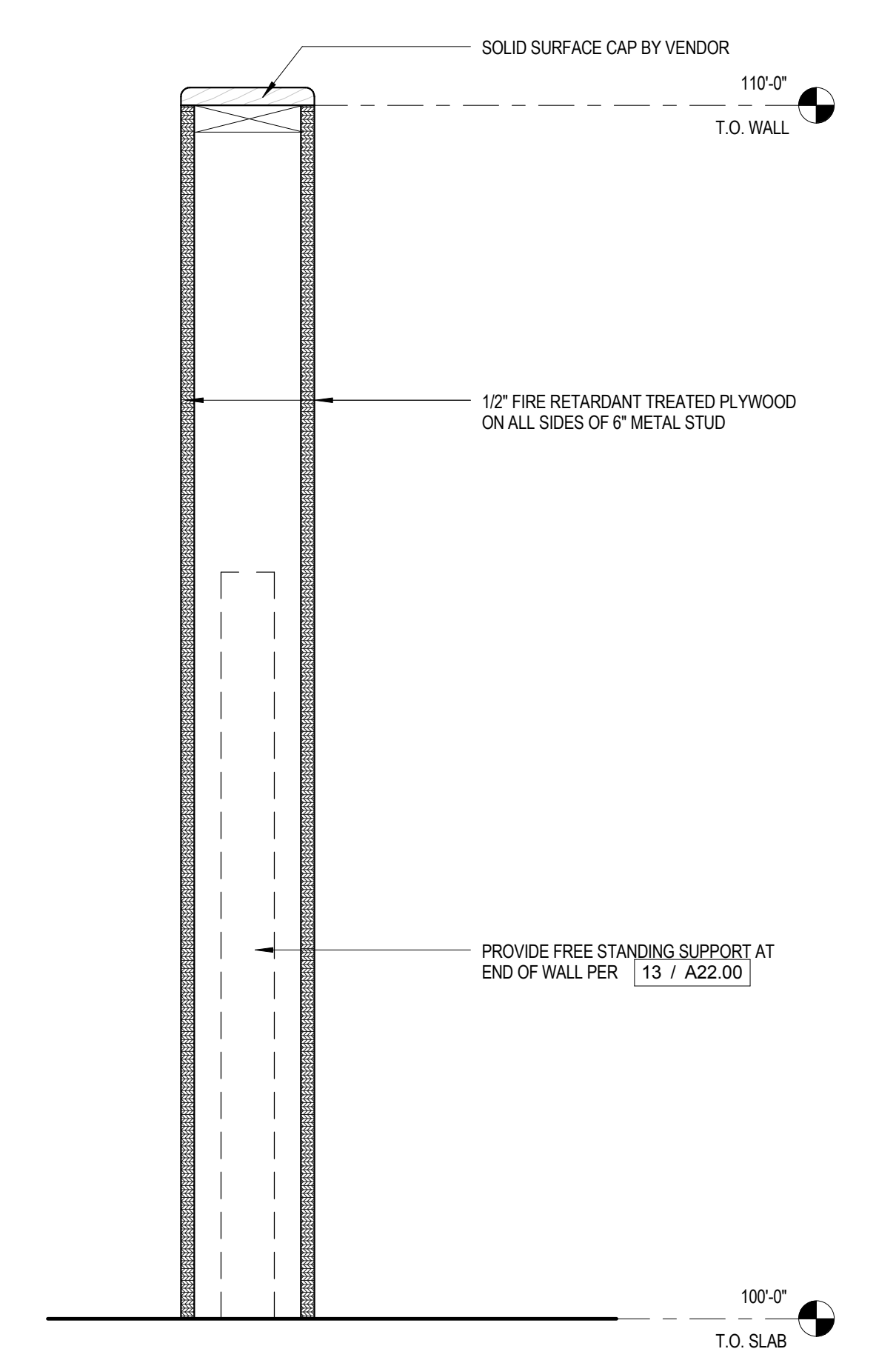
OWNER  
Cinergy Cinemas & Entertainment  
5720 LBJ Freeway, Suite 625  
Dallas, TX 75240  
Jeffrey Benson 469-804-7475



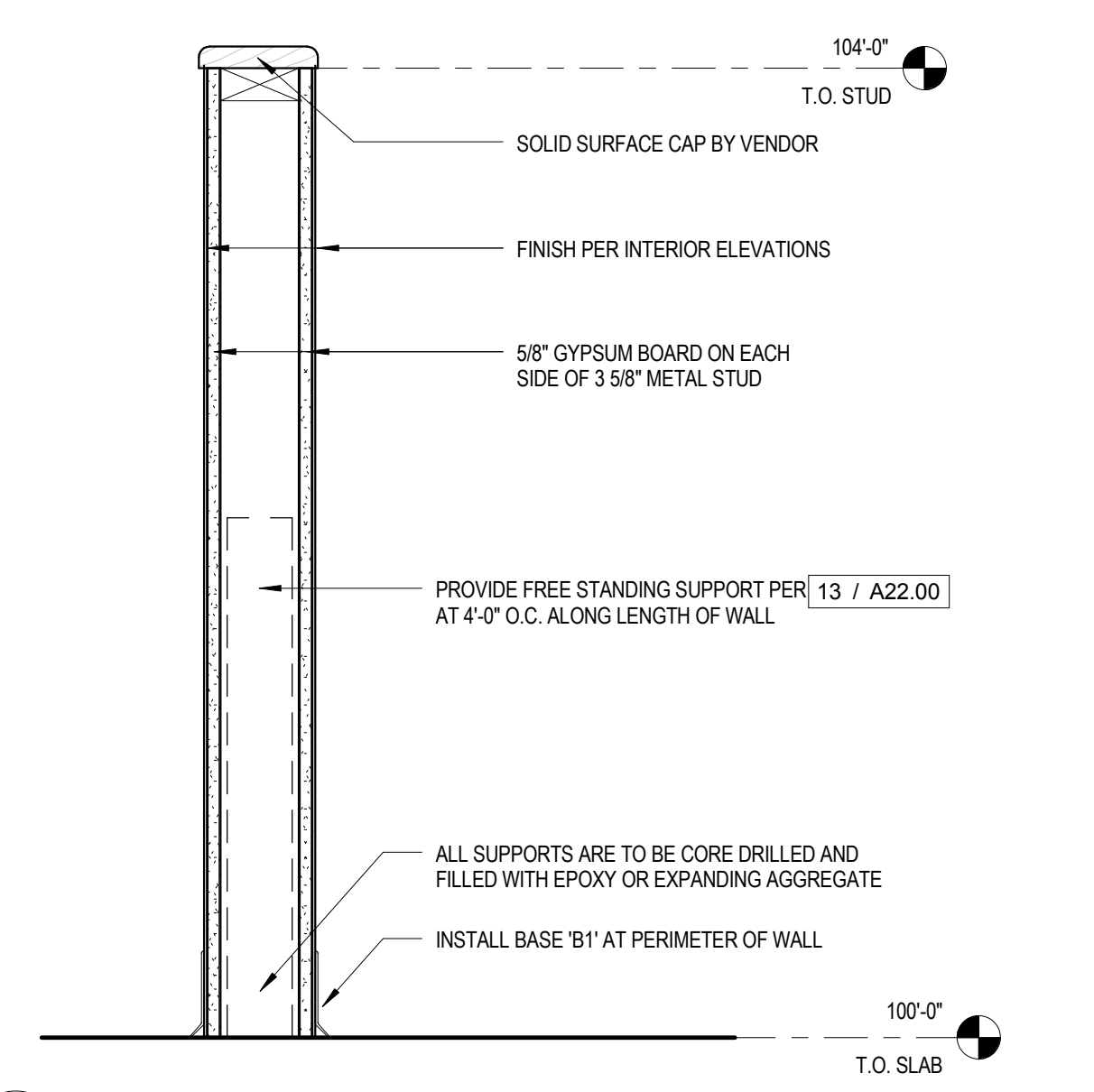
**22 KITCHEN SHEATHING**  
6" = 1'-0"



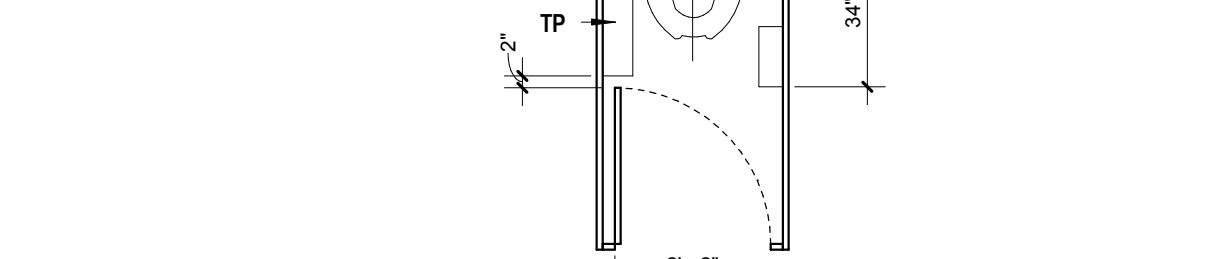
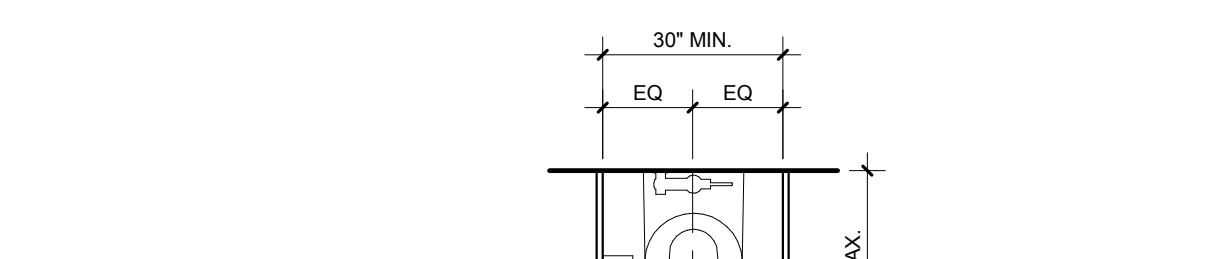
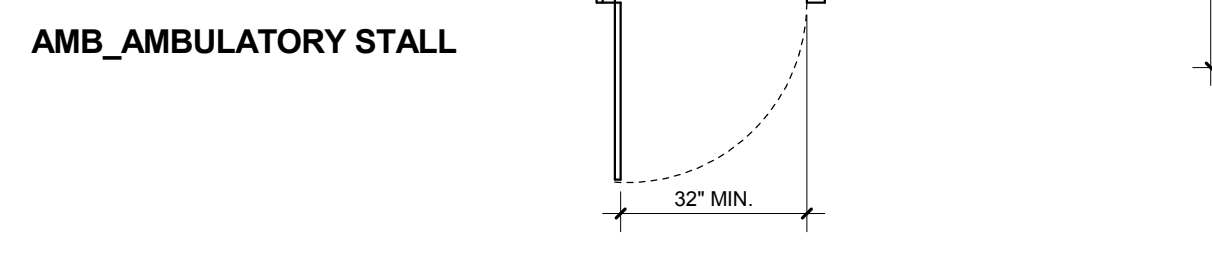
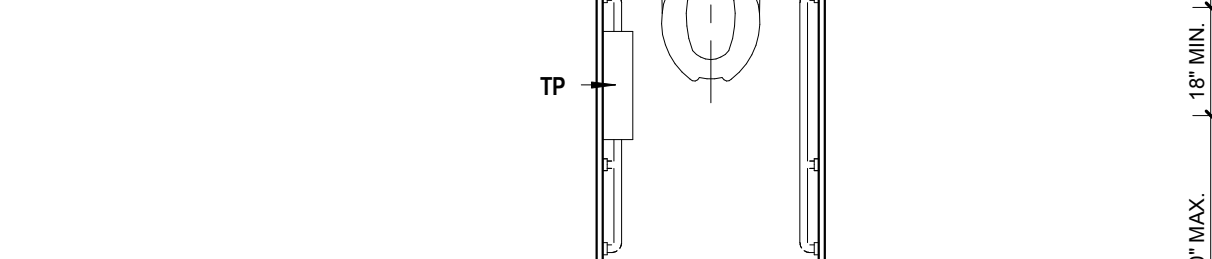
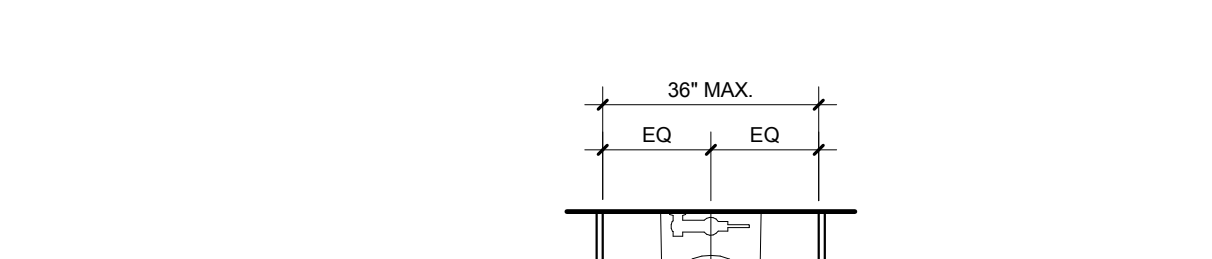
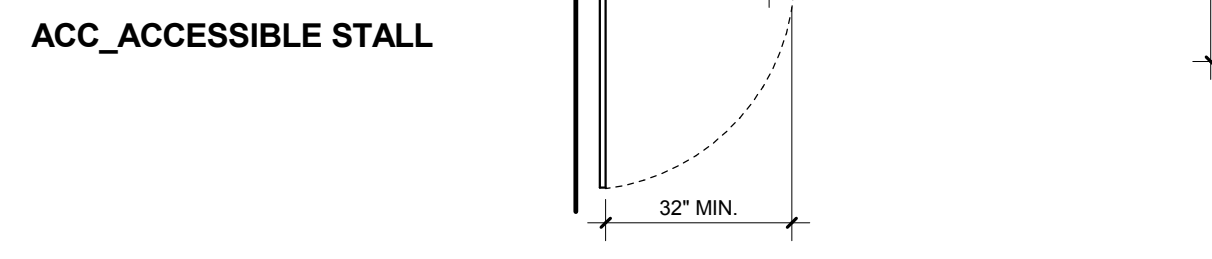
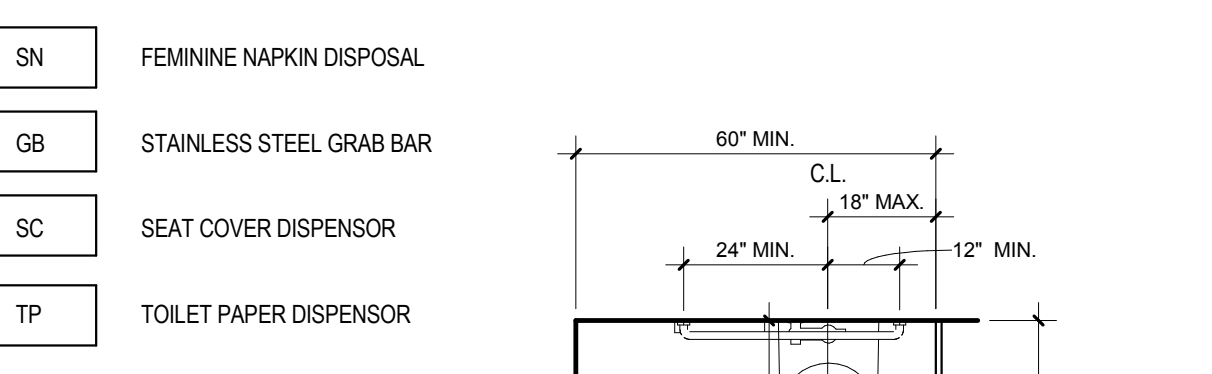
**21 BAR SECTION**  
1 1/2" = 1'-0"



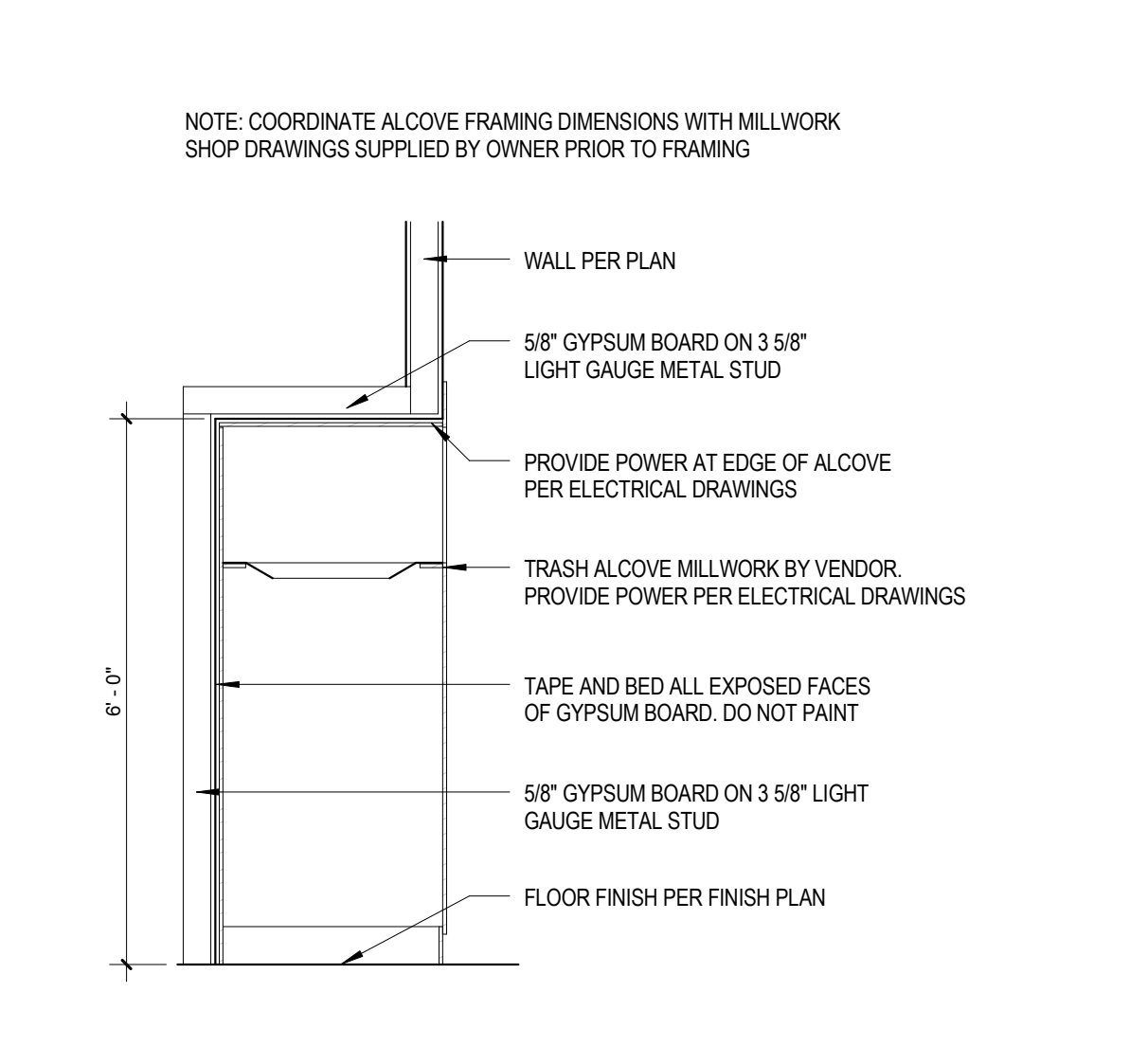
**20 BOWLING BAR WALL**  
1 1/2" = 1'-0"



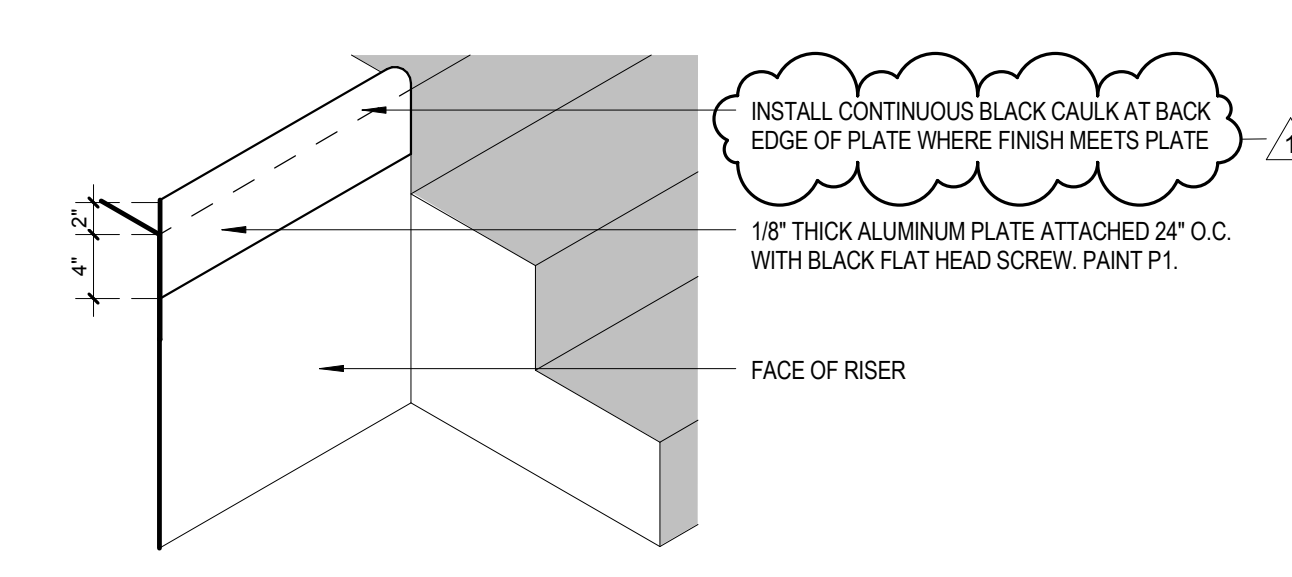
**19 LOW WALL AT BAR AND REDEMPTION**  
1 1/2" = 1'-0"



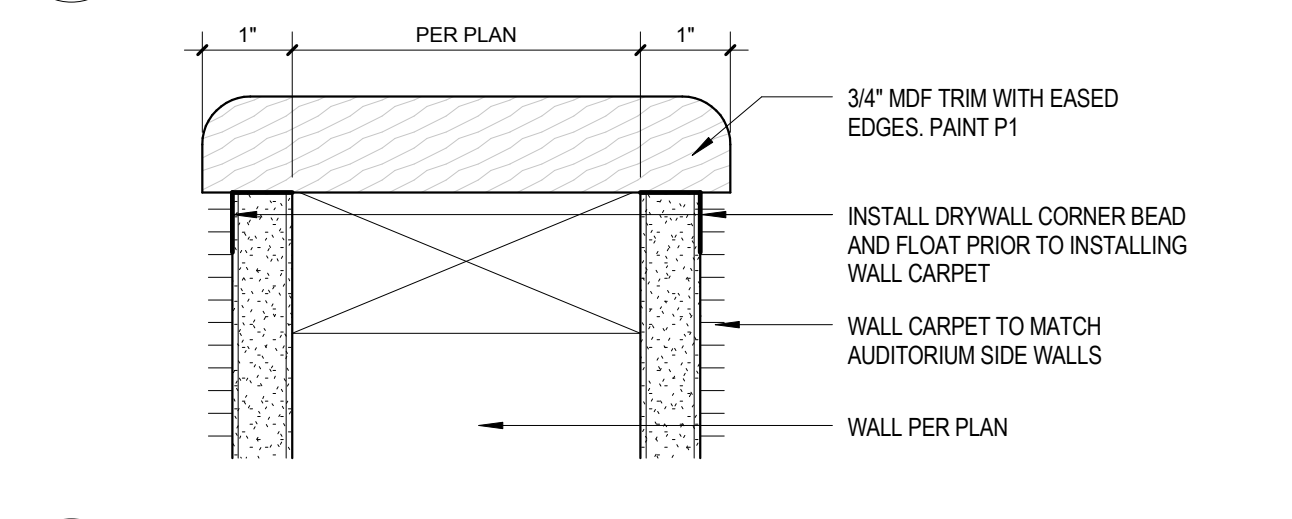
**15 TOILET COMPARTMENT ACCESSORIES**  
3/8" = 1'-0"



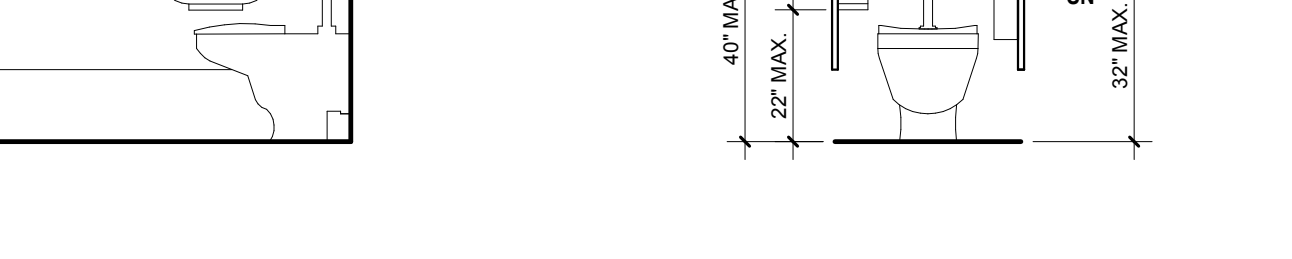
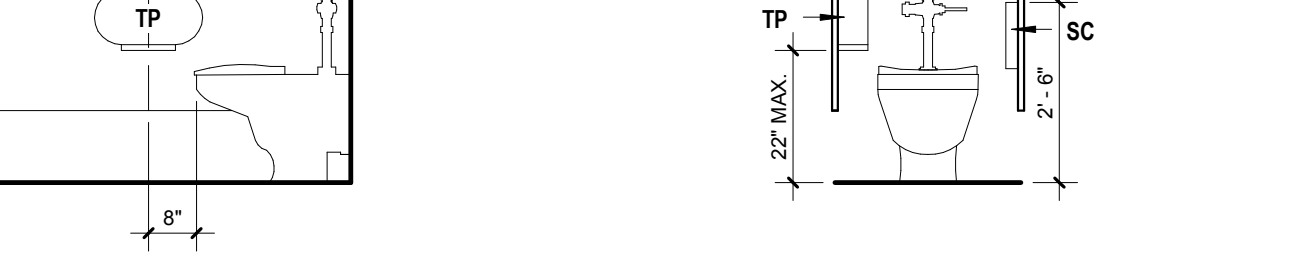
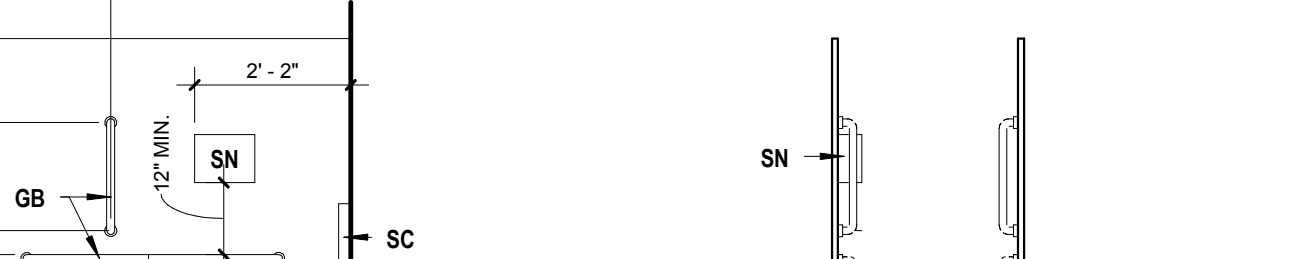
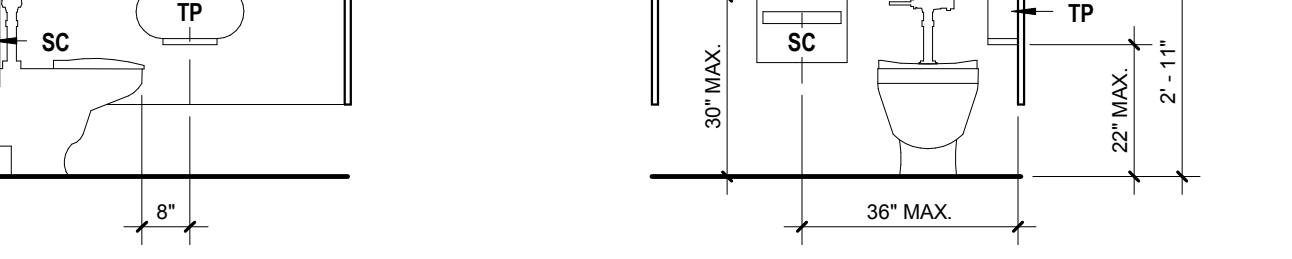
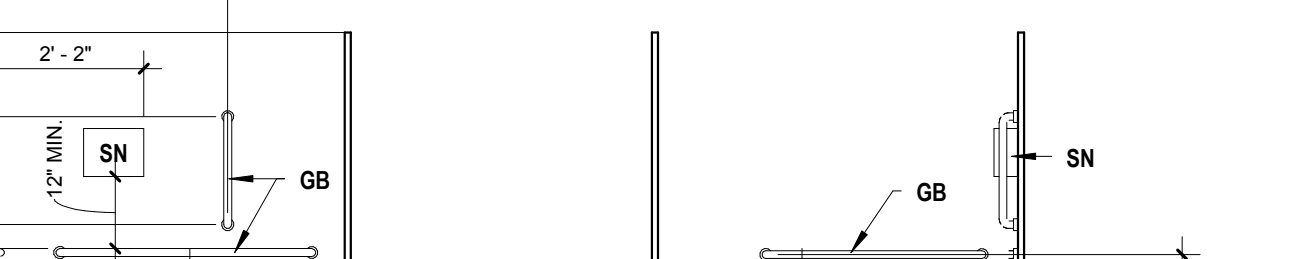
**18 TRASH ALCOVE**  
1 1/2" = 1'-0"



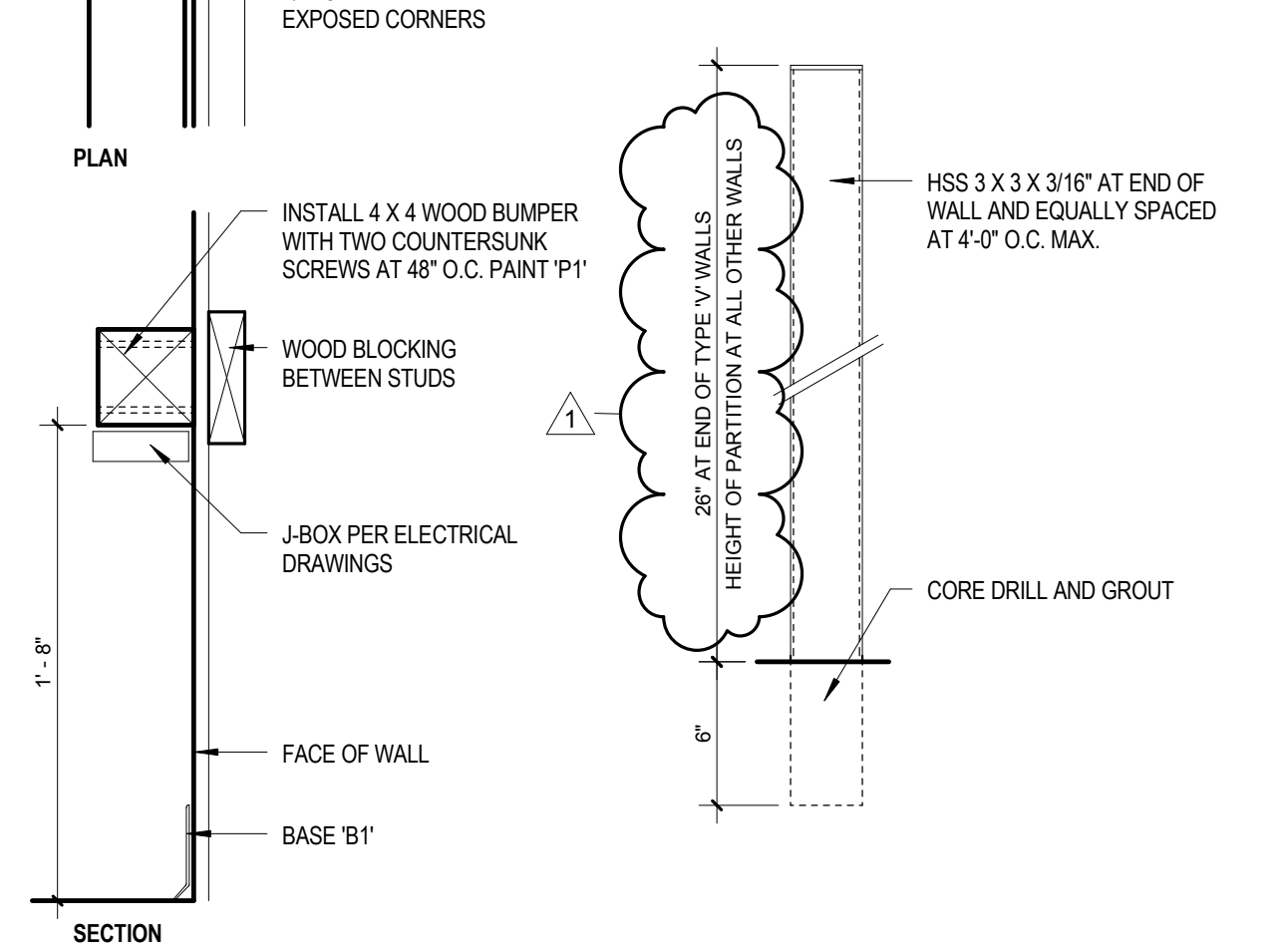
**17 TRASH GUARD**  
1" = 1'-0"



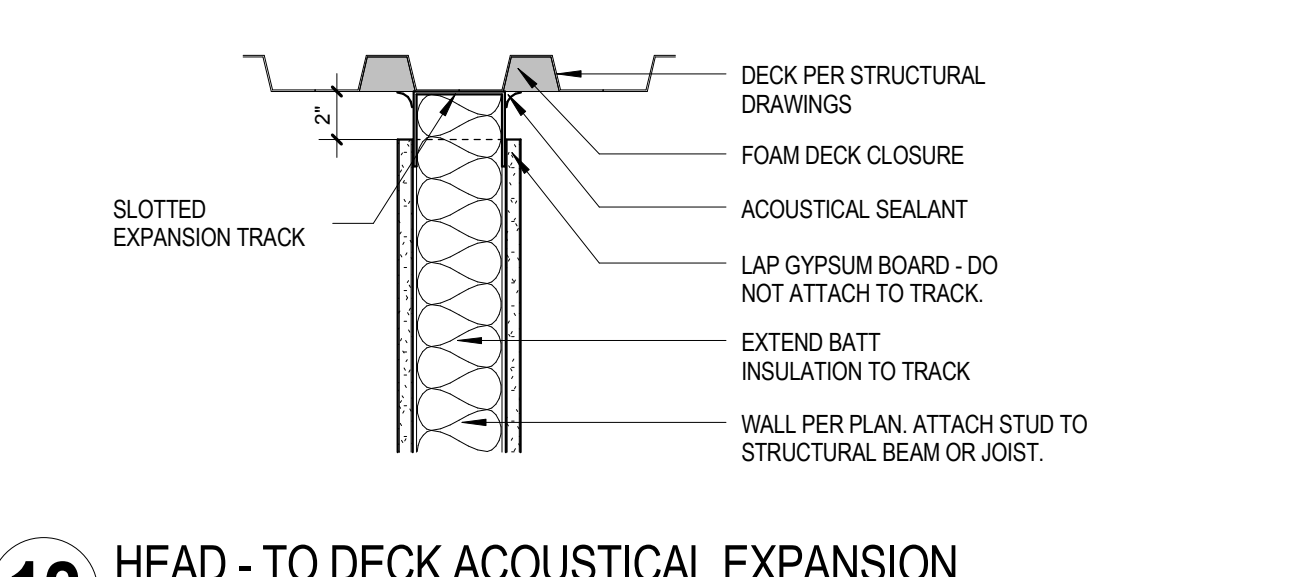
**16 VOMITORY WALL CAP**  
6" = 1'-0"



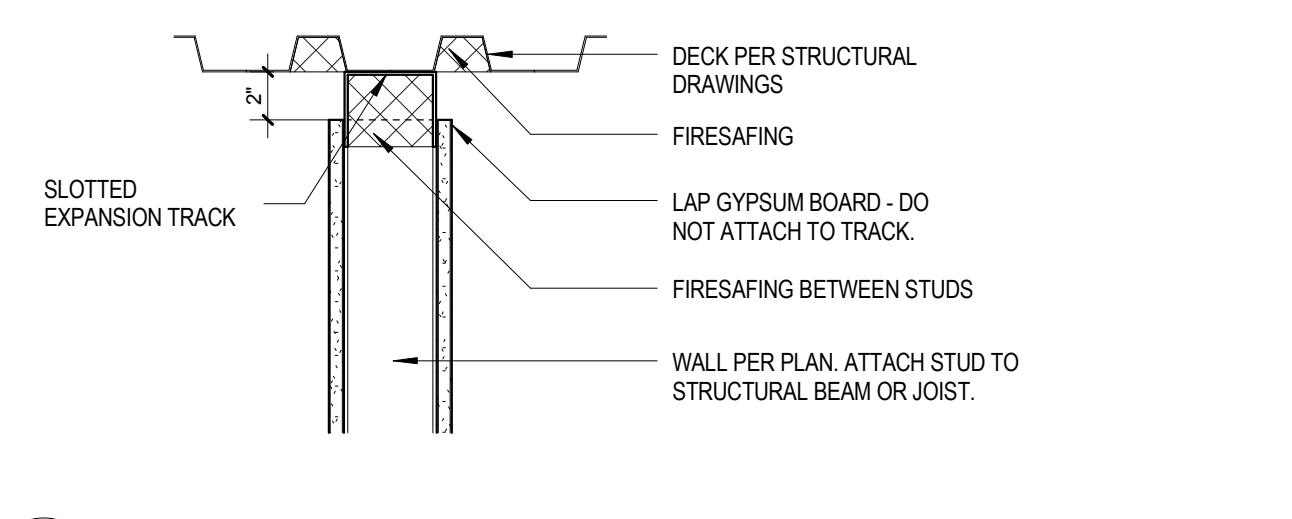
**14 GAME WALL BUMPER**  
1 1/2" = 1'-0"



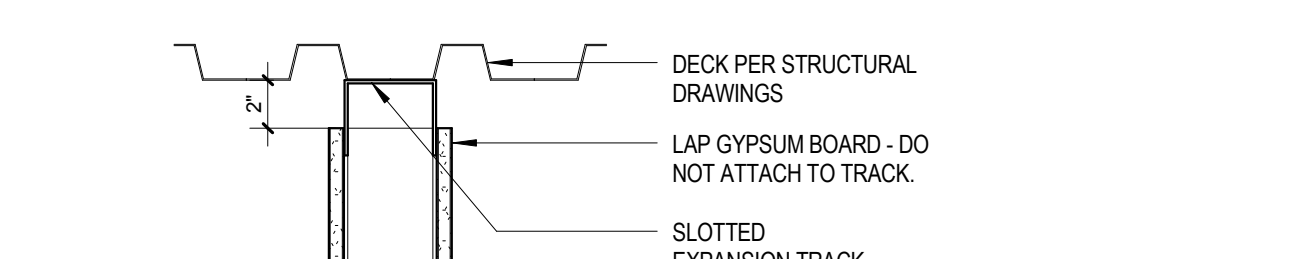
**14 GAME WALL BUMPER**  
1 1/2" = 1'-0"



**12 HEAD - TO DECK ACOUSTICAL EXPANSION**  
1 1/2" = 1'-0"



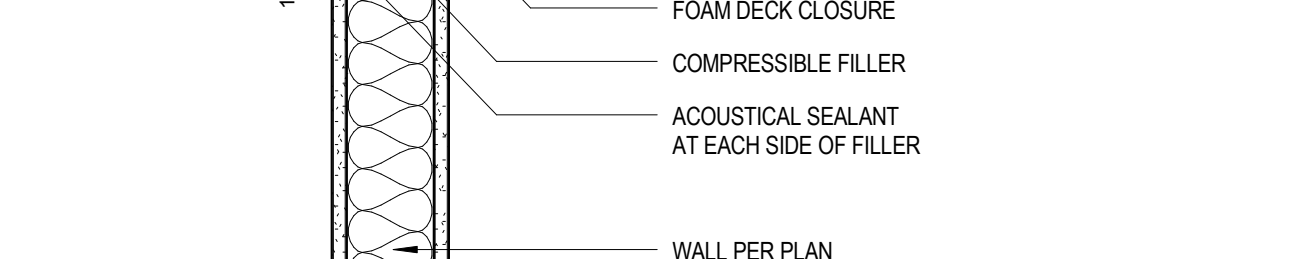
**11 HEAD - TO DECK RATED EXPANSION**  
1 1/2" = 1'-0"



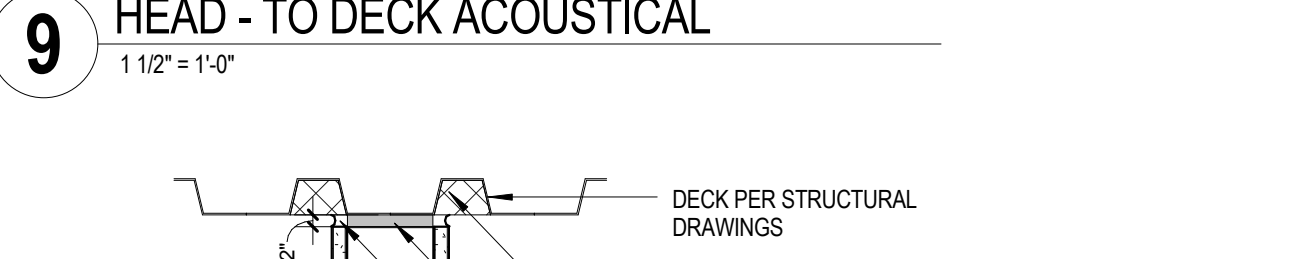
**10 HEAD - TO DECK EXPANSION**  
1 1/2" = 1'-0"



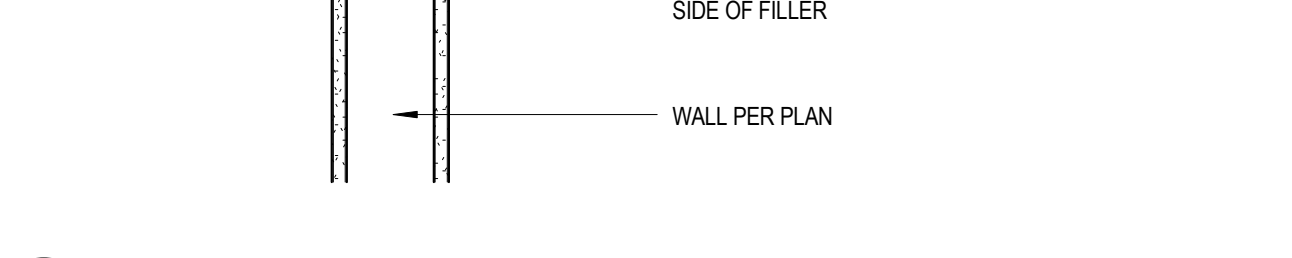
**9 HEAD - TO DECK ACOUSTICAL**  
1 1/2" = 1'-0"



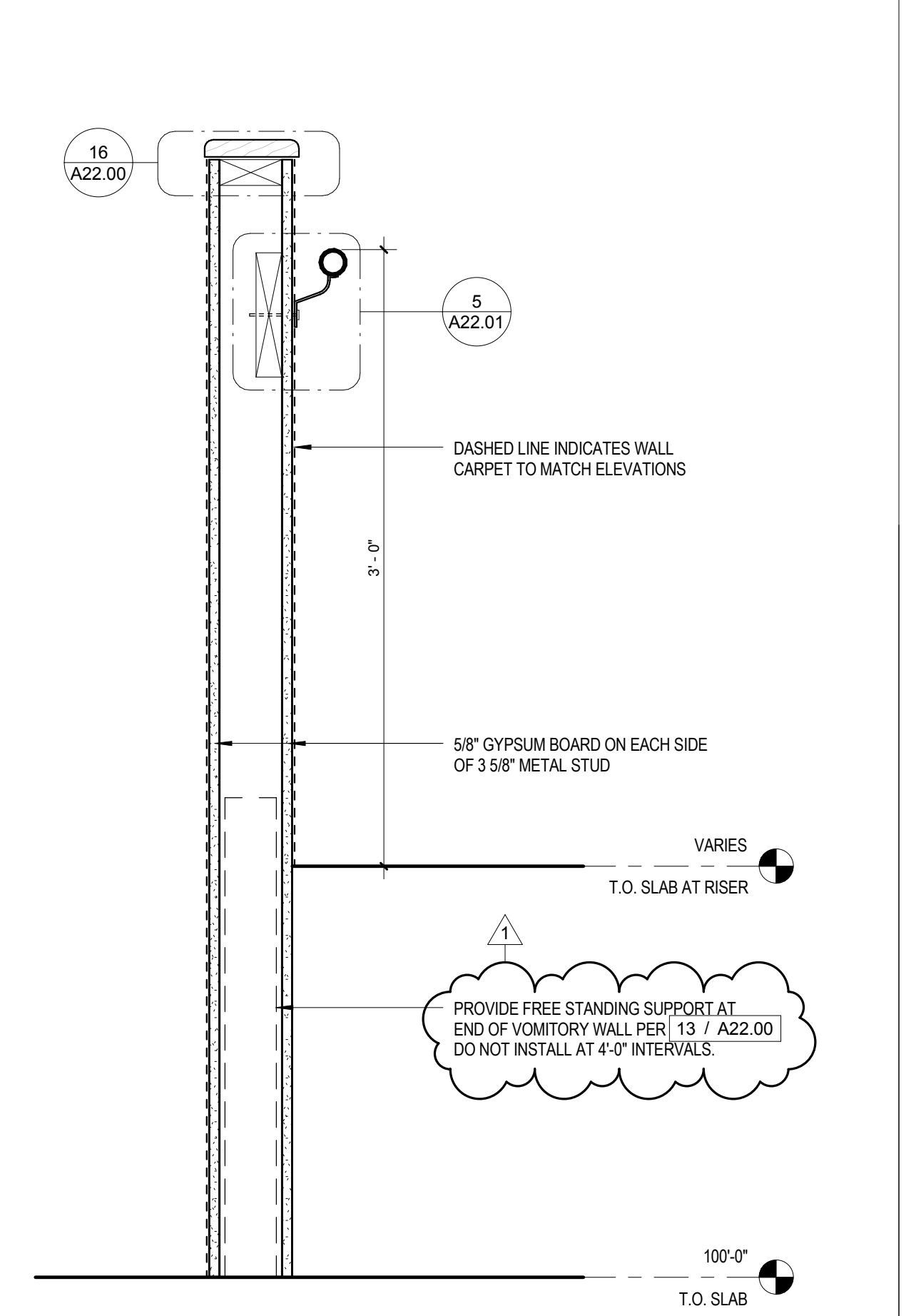
**8 HEAD - TO DECK RATED**  
1 1/2" = 1'-0"



**7 HEAD - TO DECK**  
1 1/2" = 1'-0"



**6 HEAD - ABOVE CEILING**  
3" = 1'-0"



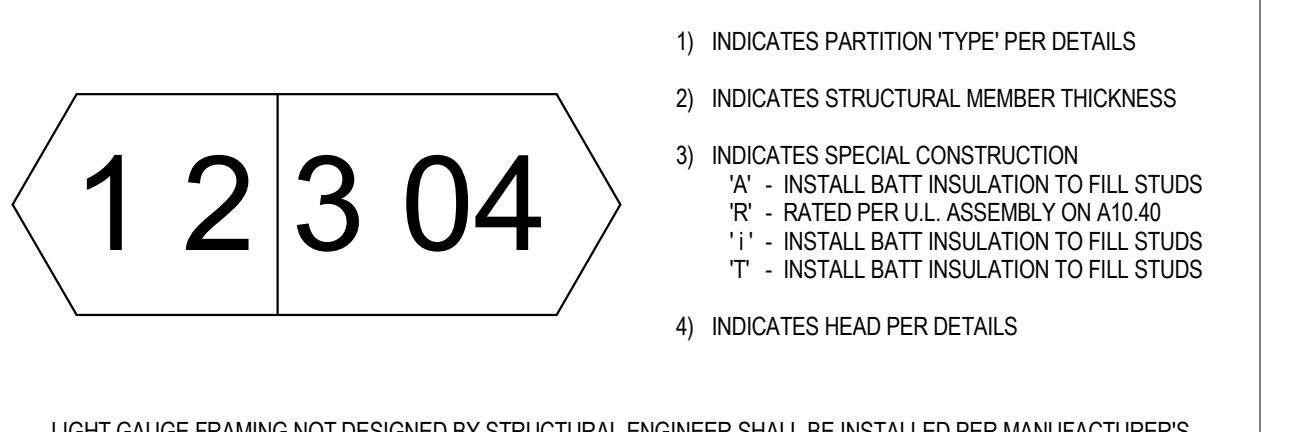
**5 PARTITION TYPE 'V'**  
1 1/2" = 1'-0"

MARK	STUD SIZE	OVERALL
C1	1 5/8"	4 1/8"
C2	2 1/2"	4 7/8"
C3	3 5/8"	6 1/8"
C6	6"	8 1/2"
C8	8"	10 1/2"

MARK	STUD SIZE	OVERALL
B1	1 5/8"	2 7/8"
B2	2 1/2"	3 3/8"
B3	3 5/8"	4 7/8"
B6	6"	7 1/4"
B8	8"	9 1/4"

MARK	STUD SIZE	OVERALL
A0	7/8"	1 1/2"
A1	1 5/8"	2 1/4"
A2	2 1/2"	3 1/8"
A3	3 5/8"	4 1/4"
A6	6"	6 5/8"
A8	8"	8 5/8"

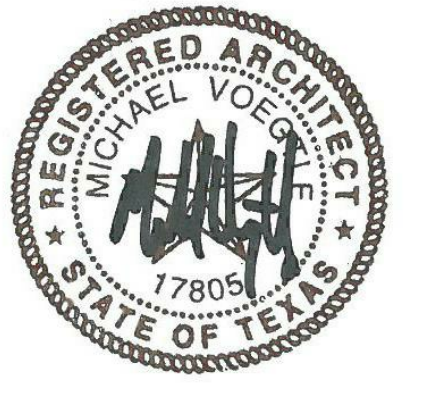
**2 PARTITION TYPE 'A'**  
12" = 1'-0"



- A LIGHT GAUGE FRAMING NOT DESIGNED BY STRUCTURAL ENGINEER SHALL BE INSTALLED PER MANUFACTURER'S RECOMMENDATIONS GIVEN SPAN. PROVIDE BRACING AND ATTACHMENT OF SHEATHING PER MANUFACTURER.
- B THE STRUCTURAL ENGINEER OF RECORD DOES NOT SIZE OR DESIGN LIGHT GAUGE CONSTRUCTION BUT IS RESPONSIBLE FOR REVIEWING CALCULATIONS OF LIGHT GAUGE ENGINEER.
- C THE ARCHITECT OF RECORD DOES NOT DESIGN LIGHT GAUGE CONSTRUCTION. ANY MEMBER SIZES SHOWN OR FRAMING INDICATED EXPRESS DESIGN INTENT BUT DO NOT CONSTITUTE A COMPLETE LIGHT GAUGE DESIGN.
- D INSTALL FRAMING AND GYPSUM BOARD TO OFFSET AROUND STRUCTURAL MEMBERS OR OTHER OBSTRUCTIONS AND MAINTAIN ACOUSTICAL OR RATED CONSTRUCTION AS REQUIRED.
- E DO NOT INSTALL GYPSUM BOARD IN DIRECT CONTACT WITH FLOOR SLAB. SHIM ALL GYPSUM BOARD 1/2" OFF THE FLOOR. AT PARTITIONS THAT ARE NOT ACOUSTICAL OR RATED, INSTALL A PLASTIC NON-POROUS SHIM AT ACOUSTICAL PARTITIONS. FILL GAP WITH ACOUSTICAL SEALANT. AT RATED PARTITIONS, FILL GAP WITH FIRE CAULK, CONCESSION AND KITCHENS.
- F INSTALL WATER RESISTANT GYPSUM BOARD AT ALL WALLS THAT RECEIVE TILE AND ALL WALLS THAT HAVE PLUMBING PENETRATIONS INCLUDING, BUT NOT LIMITED TO, U.L. ASSEMBLY GUIDELINES.
- H ALL RATED PARTITIONS ARE TO BE CONSTRUCTED PER NOTED U.L. ASSEMBLY GUIDELINES.
- I INSTALL WATERPROOFING MEMBRANE AT BASE OF WALLS IN RESTROOMS, KITCHEN, BARS AND JANITOR CLOSETS PER [ 4 / A90.10 ] AND [ 9 / A90.10 ].

**1 PARTITION GENERAL NOTES**  
12" = 1'-0"

REV.	DATE	ISSUE FOR PERMIT	ISSUE TITLE
	06.12.17	ISSUE FOR PERMIT	
	05.24.17	ISSUE FOR BID	
1	06.12.17	ADDENDUM 01	



CINERGY AMARILLO

PARTITION AND PLAN  
DETAILS

A22.00  
SHEET NUMBER

ARA007  
PROJECT NUMBER