

04/13/17
 The seal appearing on this document was authorized by M. BRYAN CHADWICK, P.E. #96604 on 04/13/2017. Alteration of a sealed document without proper notification to the responsible engineer is an offense under the Texas Engineering Practice Act. The record copy of this drawing is to be maintained in the office of FourPoint MEP, 1301 Abrams Rd., Richardson, TX 75081. MEPL-TEMP-FIRM-01-17005

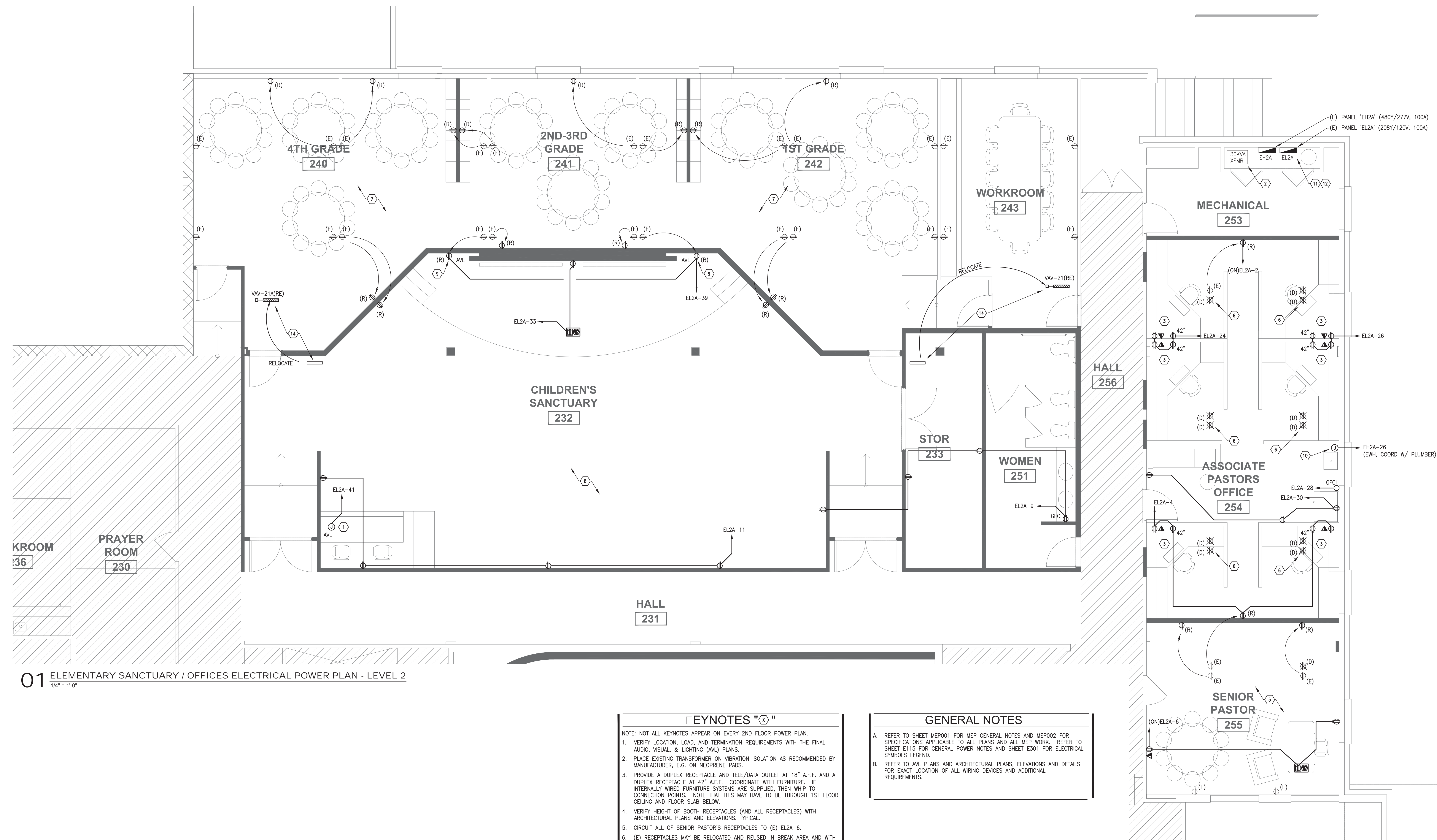
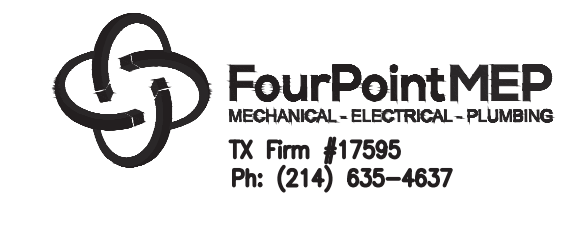
BINNERI PRESBYTERIAN CHURCH
 RICHARDSON, TX
 1301 ABRAMS RD.
 RICHARDSON, TEXAS 75081



COPYRIGHT THESE DRAWINGS ARE THE PROPERTY OF POOLE+DRENNAN DESIGN STUDIO AND SHALL NOT BE DUPLICATED, DISCLOSED OR REUSED WITHOUT THE WRITTEN CONSENT OF POOLE+DRENNAN DESIGN STUDIO

DRAWN BY:
 CHECKED BY:
 DATE: **04.12.2017**
 REVISIONS:

PROJECT NO.: **16054**
 SHEET TITLE: **PHASE I- ELEMENTARY SANCTUARY ELECTRICAL FLOOR PLAN**
 SHEET NO.: **E213**



01 ELEMENTARY SANCTUARY / OFFICES ELECTRICAL POWER PLAN - LEVEL 2
 1/4" = 1'-0"

KEYNOTES "K"

- NOTE: NOT ALL KEYNOTES APPEAR ON EVERY 2ND FLOOR POWER PLAN.
- VERIFY LOCATION, LOAD, AND TERMINATION REQUIREMENTS WITH THE FINAL AUDIO, VISUAL, & LIGHTING (AVL) PLANS.
 - PLACE EXISTING TRANSFORMER ON VIBRATION ISOLATION AS RECOMMENDED BY MANUFACTURER, E.G. ON NEOPRENE PADS.
 - PROVIDE A DUPLEX RECEPTACLE AND TELE/DATA OUTLET AT 18" A.F.F. AND A DUPLEX RECEPTACLE AT 42" A.F.F. COORDINATE WITH FURNITURE. IF INTERNALLY WIRED FURNITURE SYSTEMS ARE SUPPLIED, THEN WHIP TO CONNECTION POINTS. NOTE THAT THIS MAY HAVE TO BE THROUGH 1ST FLOOR CEILING AND FLOOR SLAB BELOW.
 - VERIFY HEIGHT OF BOOTH RECEPTACLES (AND ALL RECEPTACLES) WITH ARCHITECTURAL PLANS AND ELEVATIONS, TYPICAL.
 - CIRCUIT ALL OF SENIOR PASTOR'S RECEPTACLES TO (E) EL2A-6.
 - (E) RECEPTACLES MAY BE RELOCATED AND REUSED IN BREAK AREA AND WITH FURNITURE SYSTEMS IF IN GOOD CONDITION AND COMPATIBLE.
 - (E) RECEPTACLES SHOWN ARE BASED ON 1995 POWER PLAN. THE ACTUAL QUANTITY OF RECEPTACLES APPEARS TO BE LESS FROM SURVEY. FIELD VERIFY EXACT COUNT AND DETERMINE NUMBER OF NEW RECEPTACLES REQUIRED. CIRCUIT APPROXIMATELY TO THE EXISTING CIRCUITS EL2A-7, 8, 10, AND 12.
 - NOT ALL (E) RECEPTACLES AND OTHER ELECTRICAL DEVICES TO BE DEMOLISHED ARE SHOWN. REFER TO GENERAL NOTES ON E115 FOR MORE INFORMATION AND TO ARCHITECTURAL PLANS FOR EXTENT OF DEMOLITION.
 - VERIFY FINAL LOCATION AND REQUIREMENTS WITH AVL PLANS.
 - PROVIDE NEW 1P/40A BREAKER (LOCK-OUT TYPE) IN DESIGNATED 277/480V PANEL WITH 2#8, #10 G., 3/4" C. MATCH SHORT CIRCUIT RATING OF EXISTING BREAKERS. PROVIDE JUNCTION BOX AT EWH. COORDINATE WITH PLUMBER.
 - FIELD VERIFY CONDITION OF PANEL 'EL2A'. PHOTOS OF PANEL DO NOT MATCH THE DIRECTORY OR THE 1995 PLANS. VERIFY THAT 3P/100A BREAKER SERVES AS MAIN AND DOES NOT SUB-FEED ANOTHER PANEL OR LOAD.
 - MEASURE EXISTING AMPERAGE ON PANEL FOR 30 DAYS. IF LOAD EXCEEDS 50A, CONTACT ENGINEER FOR DIRECTION. IN THAT CASE, NEW CIRCUITS WILL BE RELOCATED TO OTHER PANELS.
 - MEASURE EXISTING AMPERAGE ON PANEL FOR 30 DAYS. IF LOAD EXCEEDS 80A, CONTACT ENGINEER FOR DIRECTION. IN THAT CASE, NEW CIRCUITS WILL BE RELOCATED TO OTHER PANELS.
 - REWORK AND EXTEND EXISTING POWER TO RELOCATED VAV BOX. FIELD VERIFY EXISTING CONDITIONS AND COORDINATE WITH MECHANICAL CONTRACTOR.
 - VERIFY WITH OWNER OR ARCHITECT IF EXISTING FLOOR RECEPTACLES (INSTALLED IN PREVIOUS REMODEL) SHALL REMAIN. OTHERWISE, REMOVE AND REPAIR FLOOR.

GENERAL NOTES

- REFER TO SHEET MEP001 FOR MEP GENERAL NOTES AND MEP002 FOR SPECIFICATIONS APPLICABLE TO ALL PLANS AND ALL MEP WORK. REFER TO SHEET E115 FOR GENERAL POWER NOTES AND SHEET E301 FOR ELECTRICAL SYMBOLS LEGEND.
- REFER TO AVL PLANS AND ARCHITECTURAL PLANS, ELEVATIONS AND DETAILS FOR EXACT LOCATION OF ALL WIRING DEVICES AND ADDITIONAL REQUIREMENTS.

ELECTRICAL SYMBOL LEGEND [PARTIAL]

SYMBOL	DESCRIPTION	MOUNTING
⊕	SIMPLEX RECEPTACLE, NEMA 5-20R	18" AFF UNO
⊕(D)	EXISTING RECEPTACLE TO BE DEMOLISHED (D) (LOCATION APPROX. FROM 1995 PLANS)	18" AFF UNO
⊕(E)	EXISTING (E) RECEPTACLE TO REMAIN, U.N.O. (LOCATION APPROX. FROM 1995 PLANS)	18" AFF UNO
⊕(R)	RELOCATED (R) RECEPTACLE (VERIFY COMPLIANCE WITH SPECS)	18" AFF UNO
⊕	DUPLEX RECEPTACLE, NEMA 5-20R	18" AFF UNO
⊕GFCI	DUPLEX RECEPTACLE, NEMA 5-20R, GFCI	18" AFF UNO
⊕IG	DUPLEX RECEPTACLE, NEMA 5-20R, ISOLATED GROUND	18" AFF UNO
⊕	QUAD RECEPTACLE, NEMA 5-20R	18" AFF UNO
⊕IG	QUAD RECEPTACLE, NEMA 5-20R, ISOLATED GROUND	18" AFF UNO
⊕GFCI	QUAD RECEPTACLE, NEMA 5-20R, GFCI	18" AFF UNO
⊕	WALL MOUNT SPECIAL PURPOSE RECEPTACLE	18" AFF UNO
⊕	SPECIAL PURPOSE RECEPTACLE	18" AFF UNO
⊕	FLUSH MOUNT DUPLEX RECEPTACLE	FLR/CLG AS NOTED ON PLANS
⊕	FLUSH MOUNT QUAD RECEPTACLE	FLR/CLG AS NOTED ON PLANS
⊕	POKE THRU DEVICE	FLOOR
⊕	FLOOR MOUNTED OR POKE THRU OUTLET FOR POWER & VOICE/DATA	FLOOR
⊕	JUNCTION BOX	AS RE-'D
H-⊕	WALL MOUNTED JUNCTION BOX	AS RE-'D
⊕	TELEPHONE OUTLET	AS RE-'D
⊕	FLUSH MOUNT TELEPHONE OUTLET	FLR/CLG AS NOTED ON PLANS
⊕	COMBINATION TELEPHONE/DATA OUTLET	AS RE-'D
⊕	FLUSH MOUNT TELEPHONE/DATA OUTLET	FLR/CLG AS NOTED ON PLANS
⊕	DATA OUTLET	AS RE-'D
⊕	FLUSH MOUNT DATA OUTLET	FLR/CLG AS NOTED ON PLANS

NOTES:
 1. REFER TO SHEET E301 FOR COMPLETE LIST OF ELECTRICAL SYMBOLS.
 2. REFER TO ARCHITECTURAL PLANS FOR FULL EXTENT OF DEMOLITION.

FILE: G:\PROJECTS\FDD\1611 - Binneri Church Remodel\Drawings\E213 - PDD1611.dwg
 SCALE: 48 DATE/TIME: Apr 13, 2017 - 11:30am
 USER: FOURPOINTMEP4_XREF(3); PDD1611 - ARCH - TB.dwg PDD1611 - ARCH - LEVEL2 - FP.dwg PDD1611 - ARCH - LEVEL2 - RN.dwg